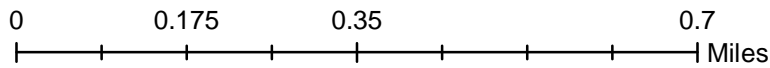
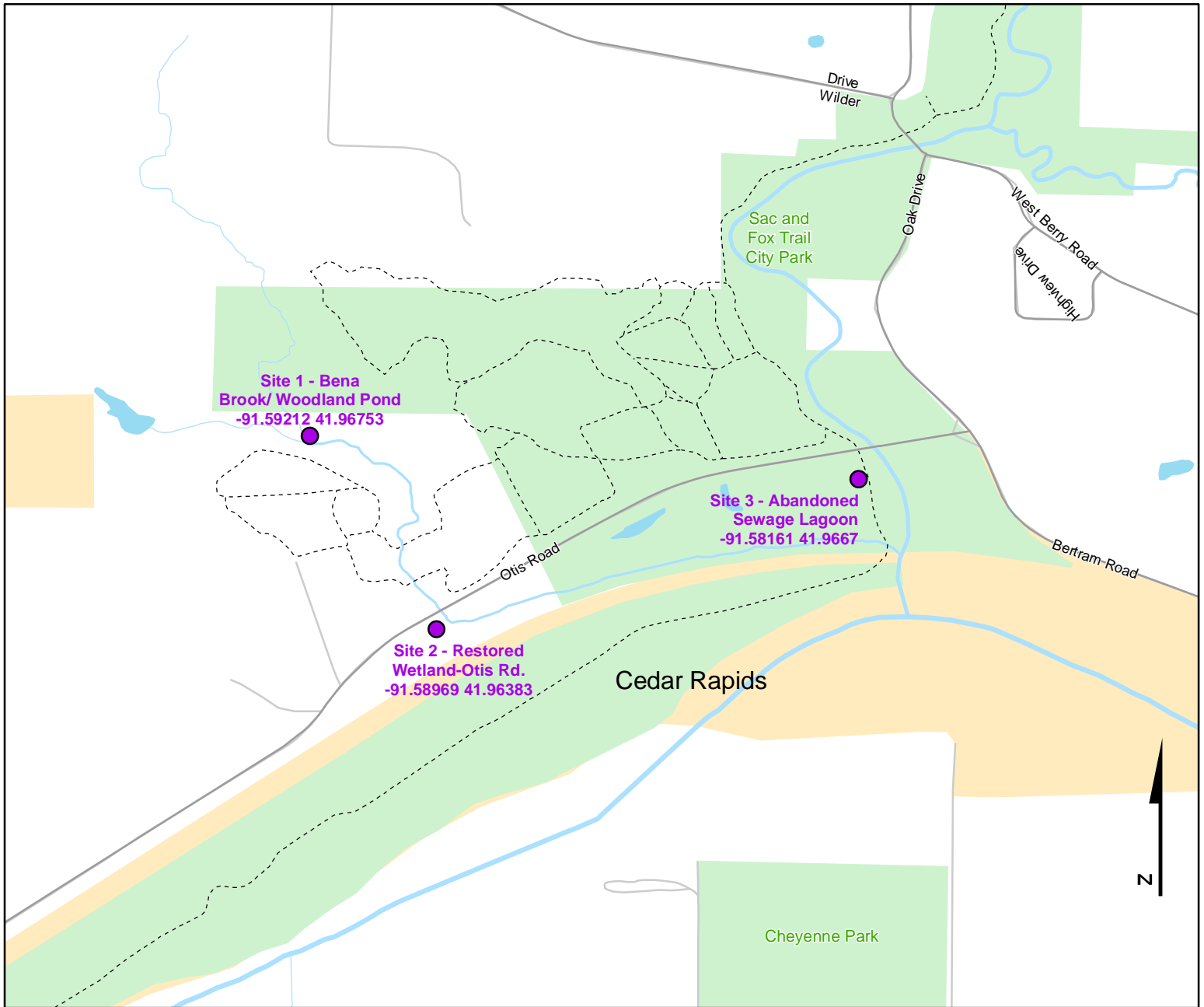




Volunteer Wildlife Monitoring Program (VWMP) Frog and Toad Survey

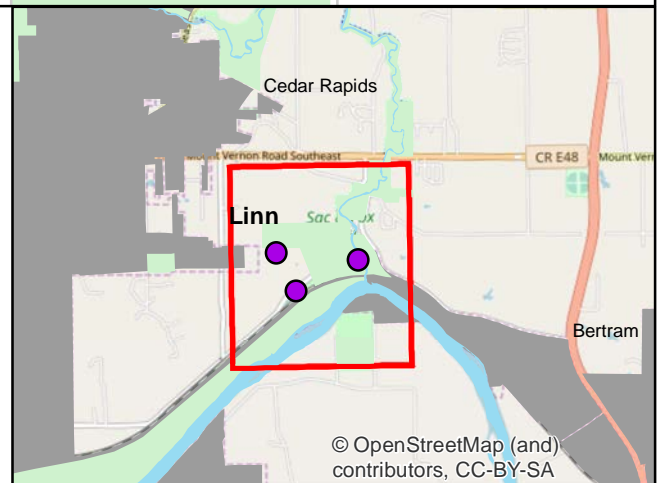
Route ID: 174 County: Linn

Click for Google Maps to Site 1: <https://www.google.com/maps/dir/?api=1&destination=41.9675329533,-91.5921174298>



Legend

----- Trails



© OpenStreetMap (and contributors, CC-BY-SA)



Frog and Toad Call Survey Route Description

Route ID **174**

Established: 1996

Site Number	Name	County	Latitude	Longitude	Directions
1	Bena Brook/ Woodland Pond	Linn	41.967533	-91.5921174	
2	Restored Wetland-Otis Rd.	Linn	41.9638285	-91.589689	half mile west of the Nature Center barn along Otis Road.
3	Abandoned Sewage Lagoon	Linn	41.9667011	-91.5816124	Just west of Indian Creek - Cedar River flood plain