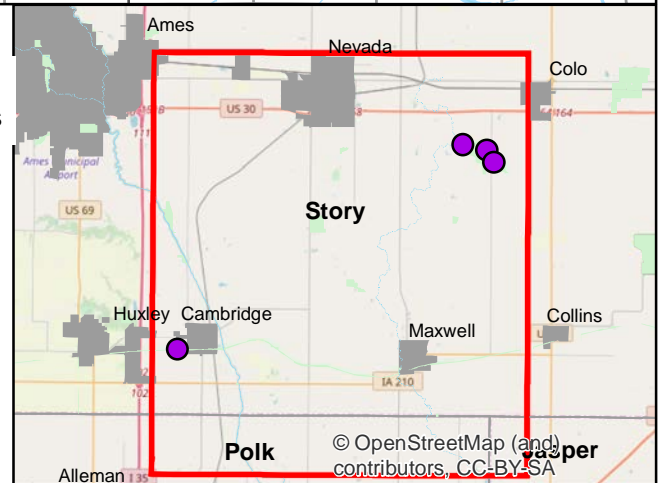
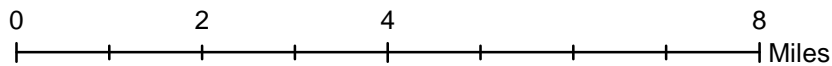
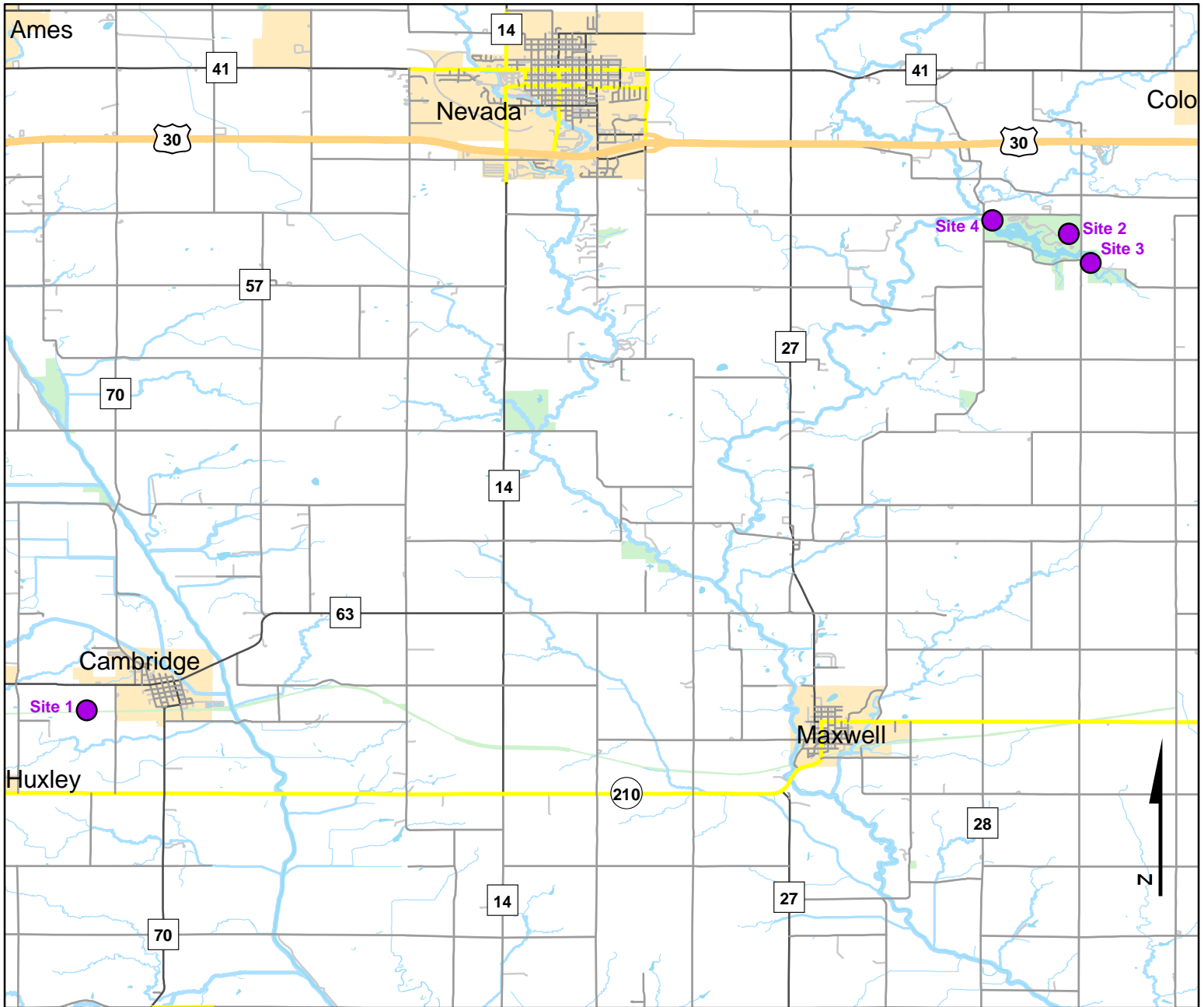




Volunteer Wildlife Monitoring Program (VWMP) Frog and Toad Survey

Route ID: 97 County: Story

Click for Google Maps to Site 1: <https://www.google.com/maps/dir/?api=1&destination=41.8942900256,-93.546780433>

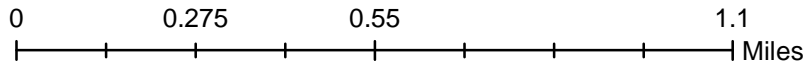
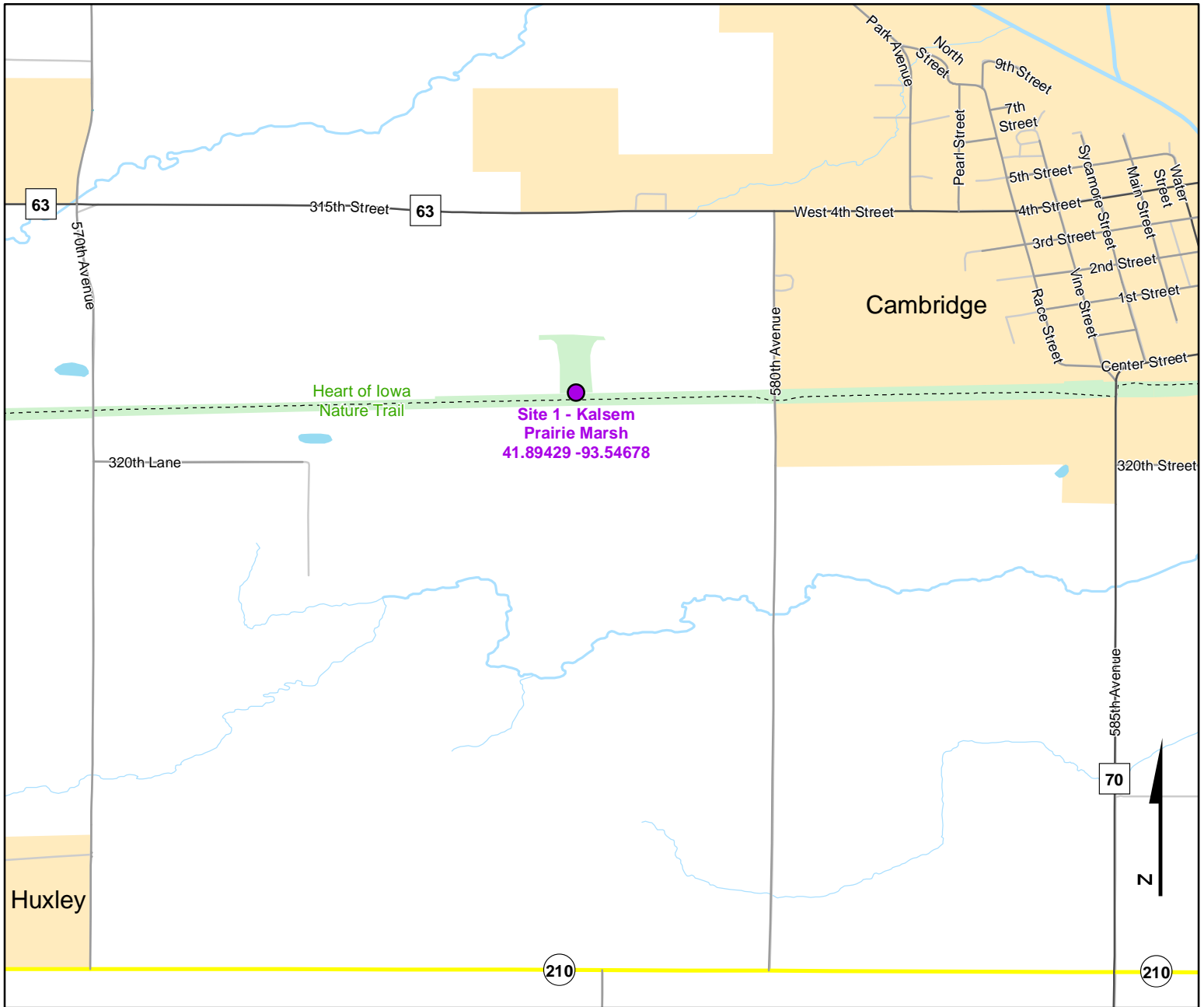




Volunteer Wildlife Monitoring Program (VWMP) Frog and Toad Survey

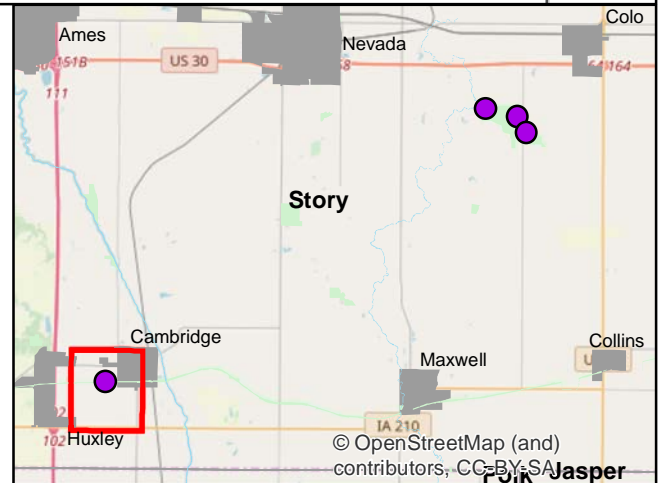
Route ID: 97 County: Story

Click for Google Maps to Site 1: <https://www.google.com/maps/dir/?api=1&destination=41.8942900256,-93.546780433>



Legend

----- Trails



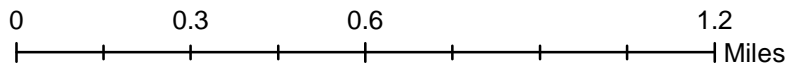
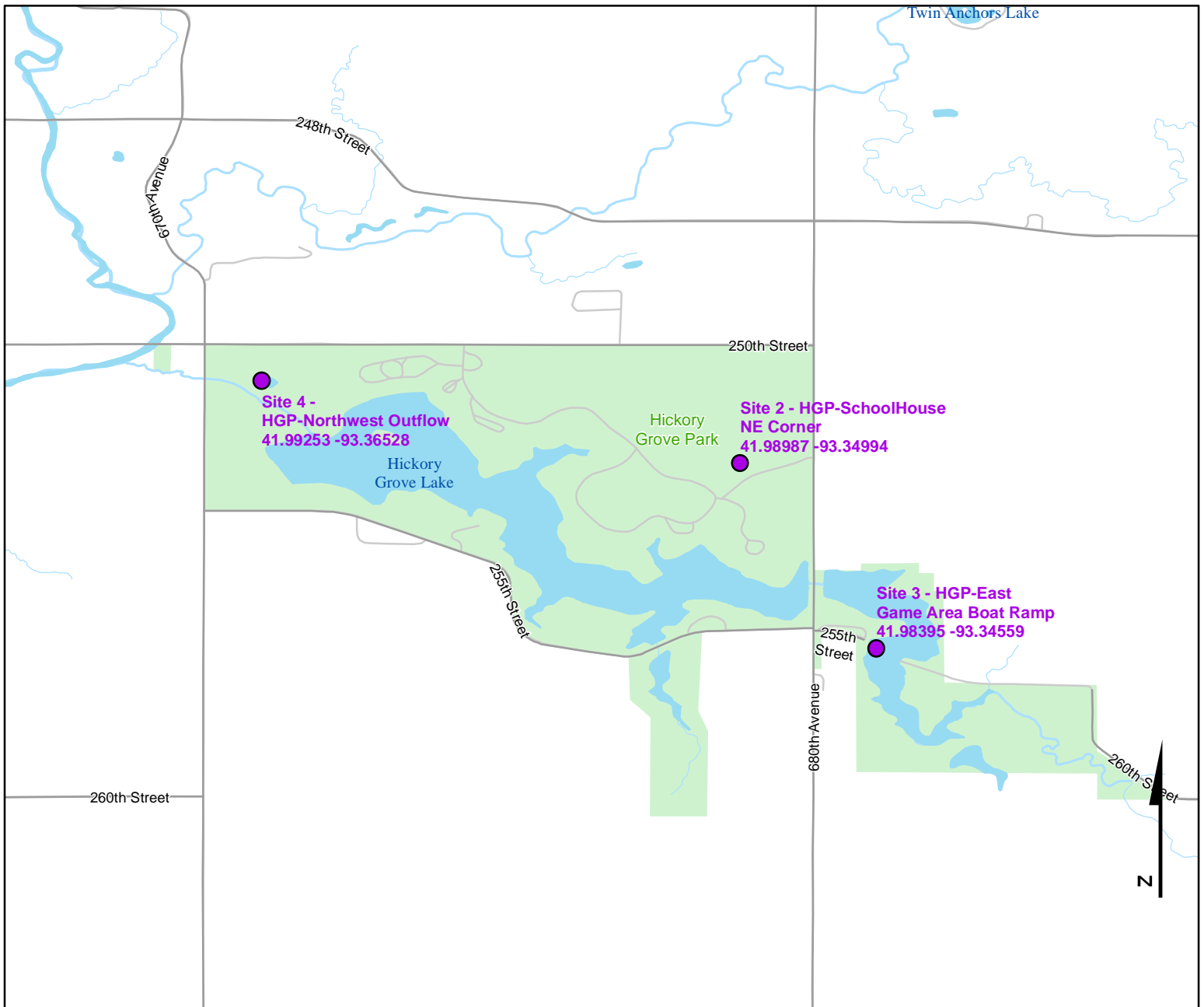
© OpenStreetMap (and contributors), CC-BY-SA



Volunteer Wildlife Monitoring Program (VWMP) Frog and Toad Survey

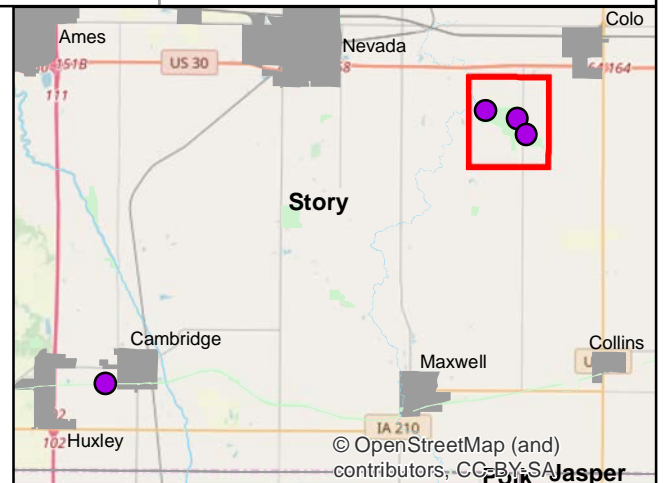
Route ID: 97 County: Story

Click for Google Maps to Site 1: <https://www.google.com/maps/dir/?api=1&destination=41.8942900256,-93.546780433>



Legend

----- Trails





Frog and Toad Call Survey Route Description

Route ID **97**

Established: 1993

Site Number	Name	County	Latitude	Longitude	Directions
1	Kalsem Prairie Marsh	Story	41.89429	-93.5467804	On north side of Heart of Iowa Trail at Kalsem Prairie Wetland sign.
3	HGP-SchoolHouse NE Corner	Story	41.9898725	-93.3499423	Large pond beside maintenance lane, approx. 1/4 mile from east border of HGP.
4	HGP-East Game Area Boat Ramn	Story	41.9839503	-93.3455882	Boat access at southeastern corner of HGP
6	HGP-Northwest Outflow	Story	41.9925267	-93.3652778	Flooded area next to white school house yard on Northwester corner of HGP