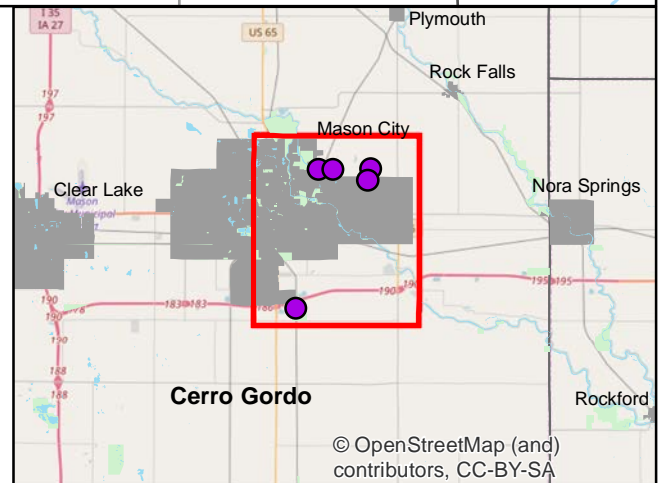
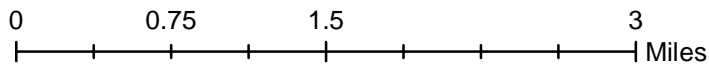
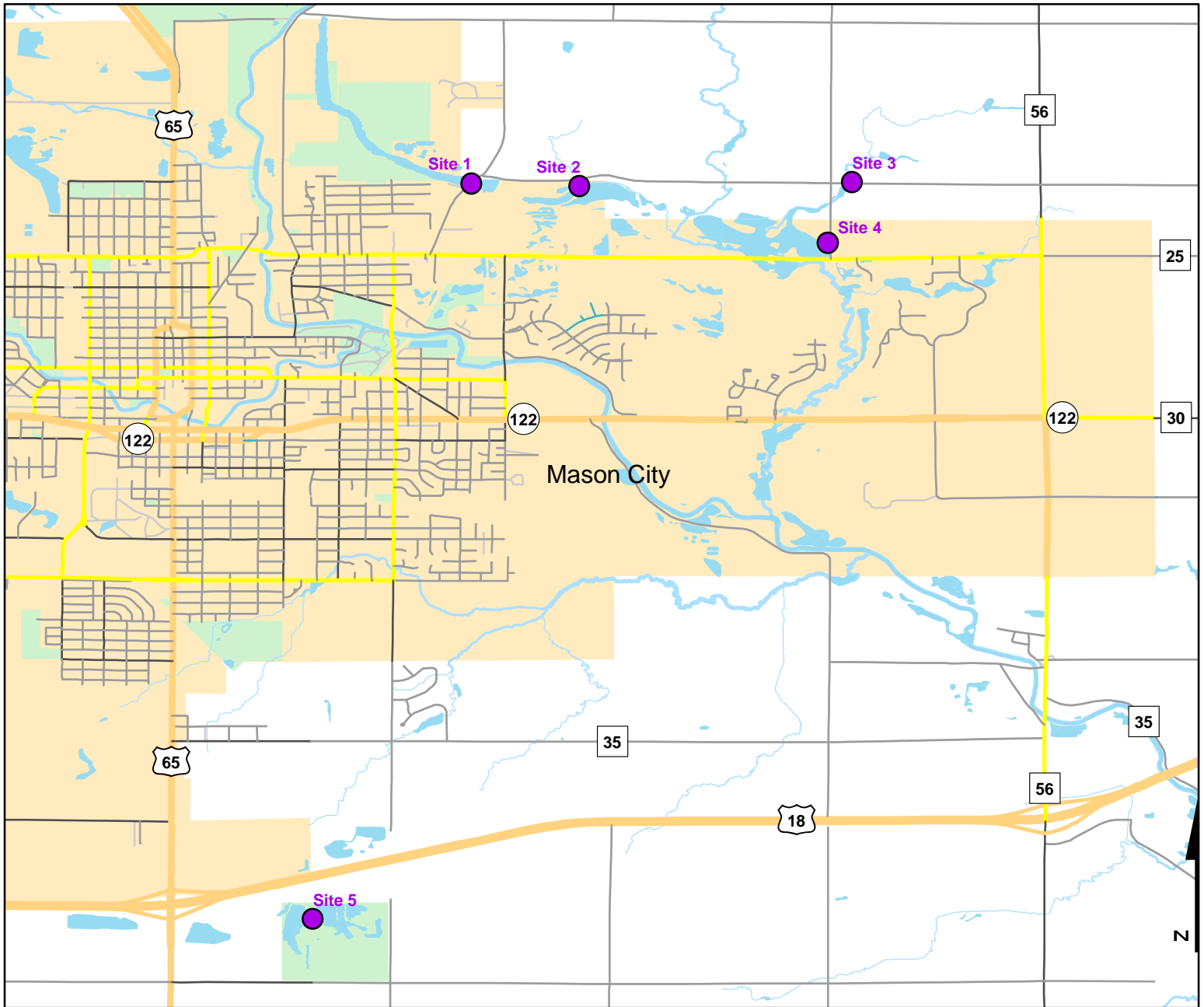




Volunteer Wildlife Monitoring Program (VWMP) Frog and Toad Survey

Route ID: 79 County: Cerro Gordo

Click for Google Maps to Site 1: <https://www.google.com/maps/dir/?api=1&destination=43.1693335774,-93.174154444>



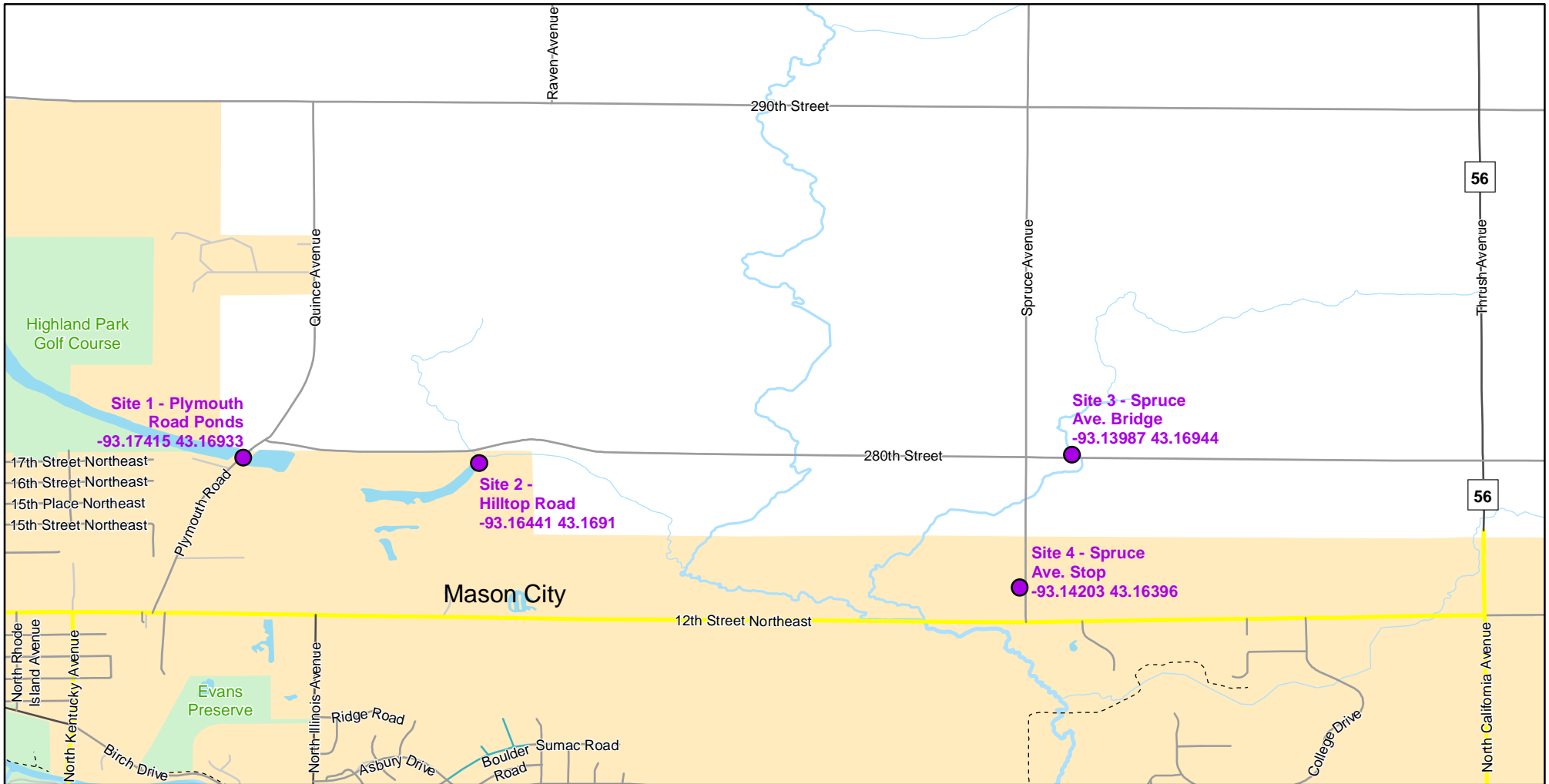
© OpenStreetMap (and contributors), CC-BY-SA



Volunteer Wildlife Monitoring Program (VWMP) Frog

Route ID: 79 County: Cerro Gordo

Click for Google Maps to Site 1: <https://www.google.com/maps/dir/?api=1&destination=43.1693335774,-93.174154444>

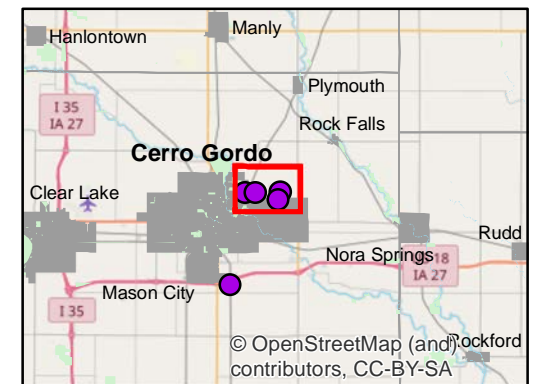
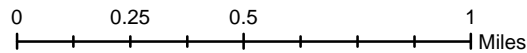


Enlarged View of Site 1



Legend

----- Trails

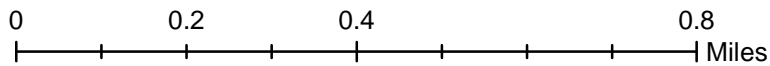
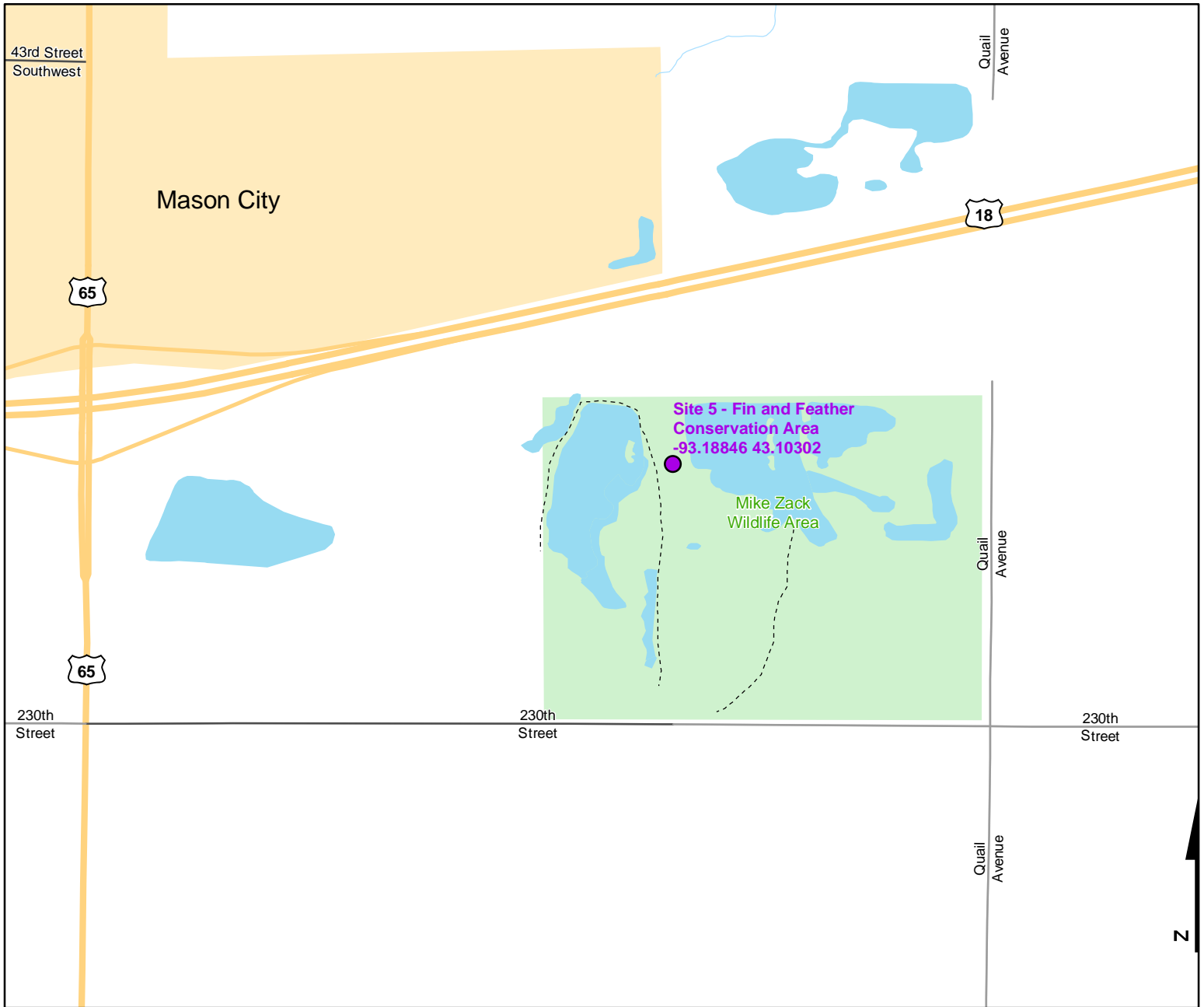




Volunteer Wildlife Monitoring Program (VWMP) Frog and Toad Survey

Route ID: 79 County: Cerro Gordo

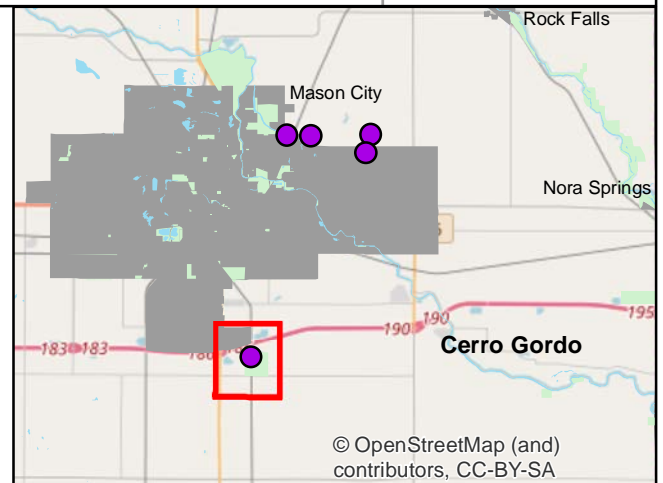
Click for Google Maps to Site 1: <https://www.google.com/maps/dir/?api=1&destination=43.1693335774,-93.174154444>



DNR
**Volunteer
 Wildlife
 Monitoring
 Program**

Legend

----- Trails



© OpenStreetMap (and contributors, CC-BY-SA)



Frog and Toad Call Survey Route Description

Route ID **79**

Established: 1992

| Site Number | Name | County | Latitude | Longitude | Directions |
|-------------|-----------------------------------|-------------|------------|-------------|---|
| 1 | Plymouth Road Ponds | Cerro Gordo | 43.1693336 | -93.1741544 | Telephone pole 0.5 mile north of 12th St. NE |
| 2 | Hilltop Road | Cerro Gordo | 43.1690959 | -93.1644102 | 0.5 mile east of Plymouth Rd. at speed limit sign. |
| 3 | Spruce Ave. Bridge | Cerro Gordo | 43.1694437 | -93.1398676 | 0.08 mile east of Spruce. Ave. on 280th St. |
| 4 | Spruce Ave. Stop | Cerro Gordo | 43.1639571 | -93.1420324 | 0.3 mile south of 280th on spruce Ave. - Road Ditch |
| 5 | Fin and Feather Conservation Area | Cerro Gordo | 43.103017 | -93.1884554 | By willows, middle of west side of cattails |