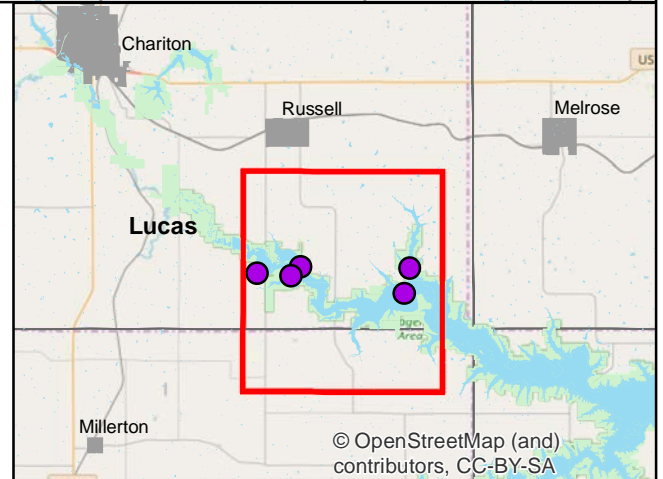
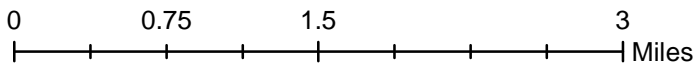
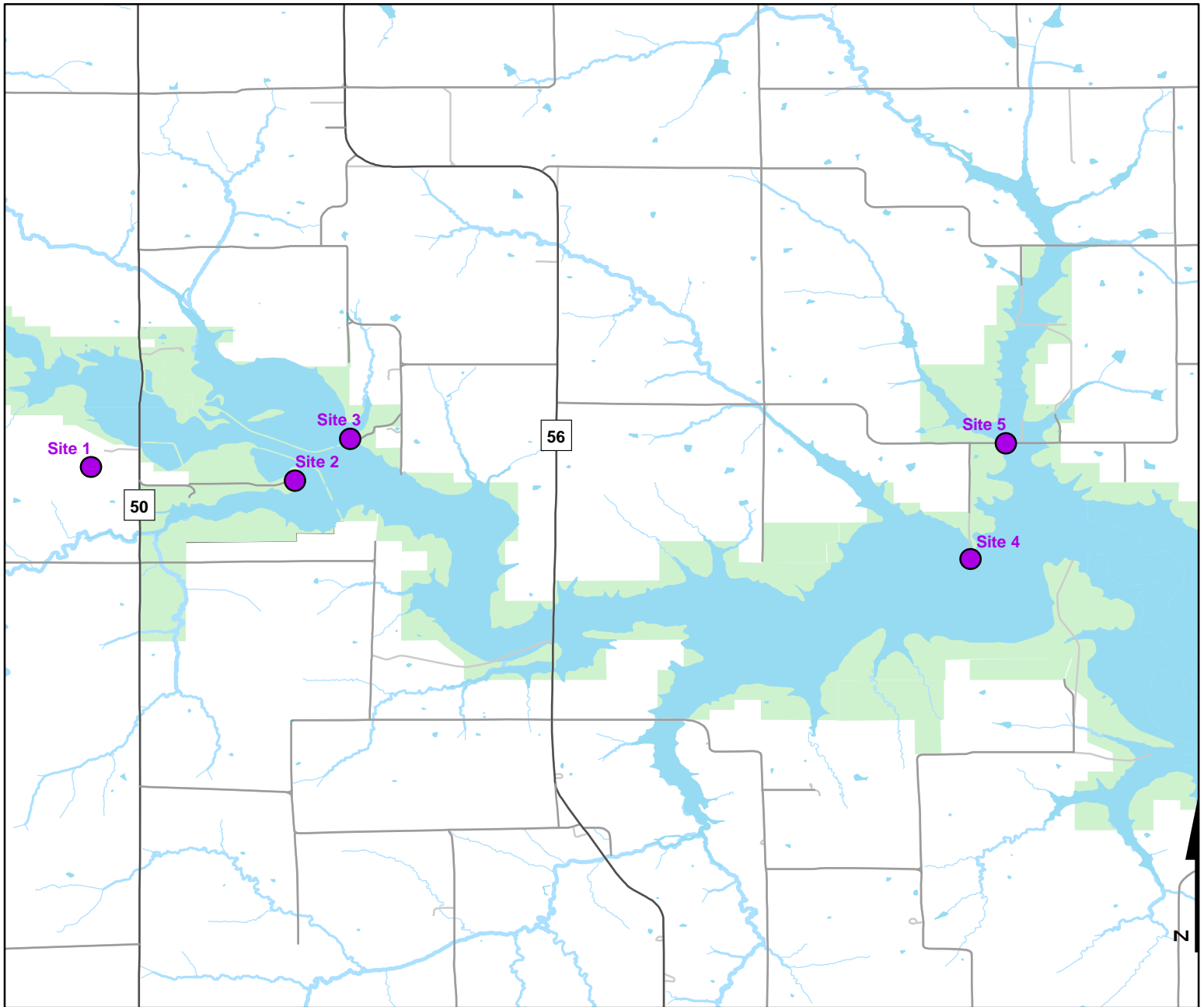




Volunteer Wildlife Monitoring Program (VWMP) Frog and Toad Survey

Route ID: 67 County: Lucas

Click for Google Maps to Site 1: <https://www.google.com/maps/dir/?api=1&destination=40.9213650736,-93.2166976175>



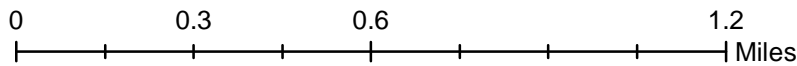
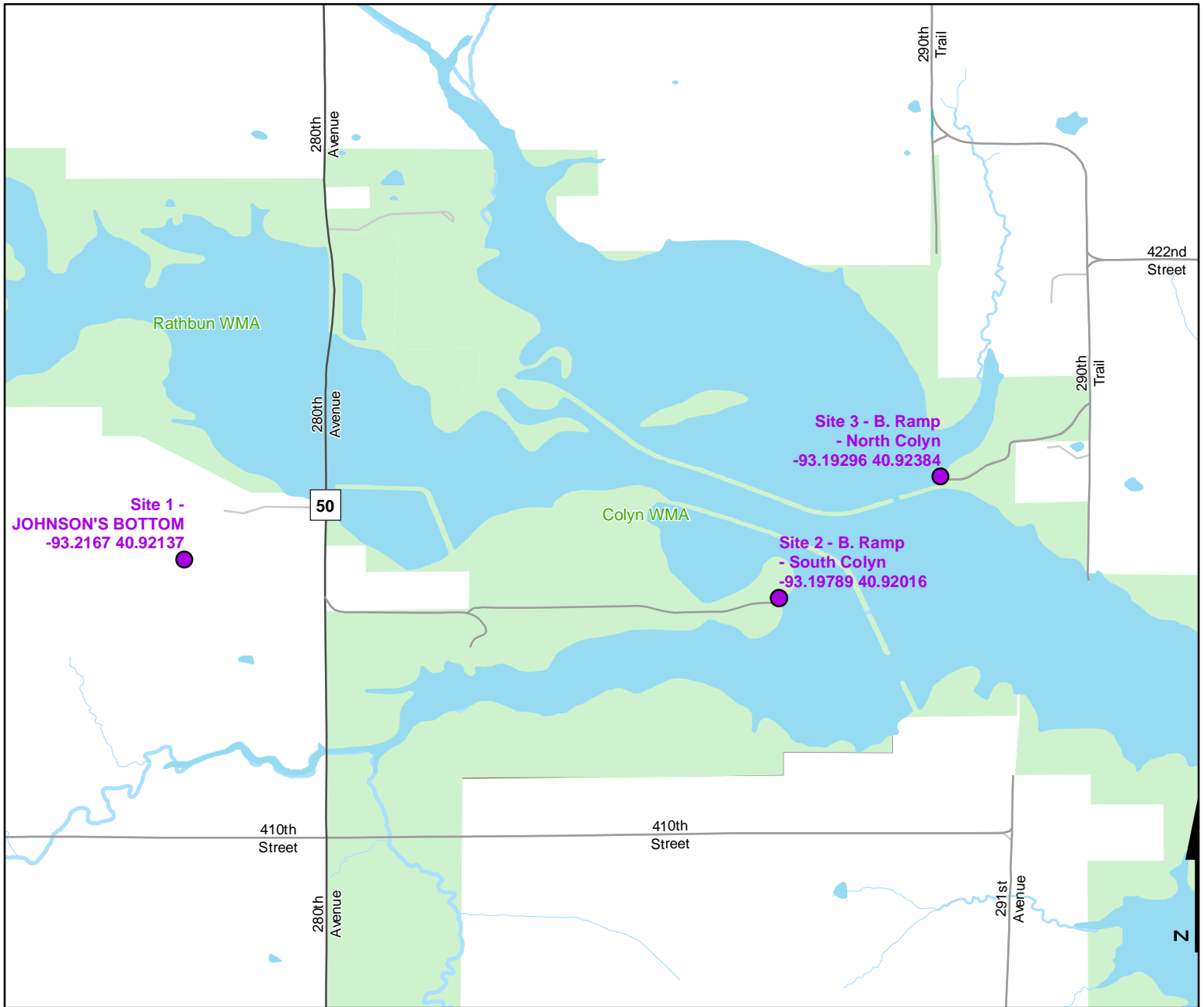
© OpenStreetMap (and) contributors, CC-BY-SA



Volunteer Wildlife Monitoring Program (VWMP) Frog and Toad Survey

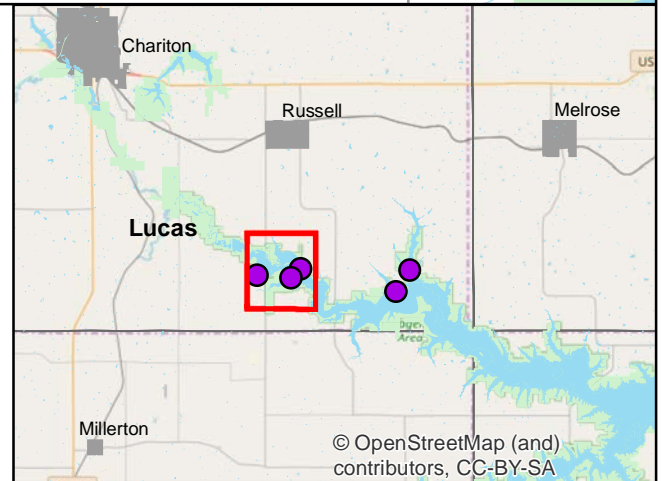
Route ID: 67 County: Lucas

Click for Google Maps to Site 1: <https://www.google.com/maps/dir/?api=1&destination=40.9213650736,-93.2166976175>



Legend

----- Trails

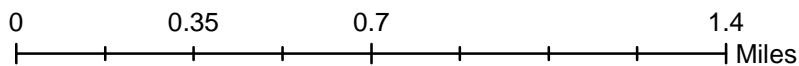
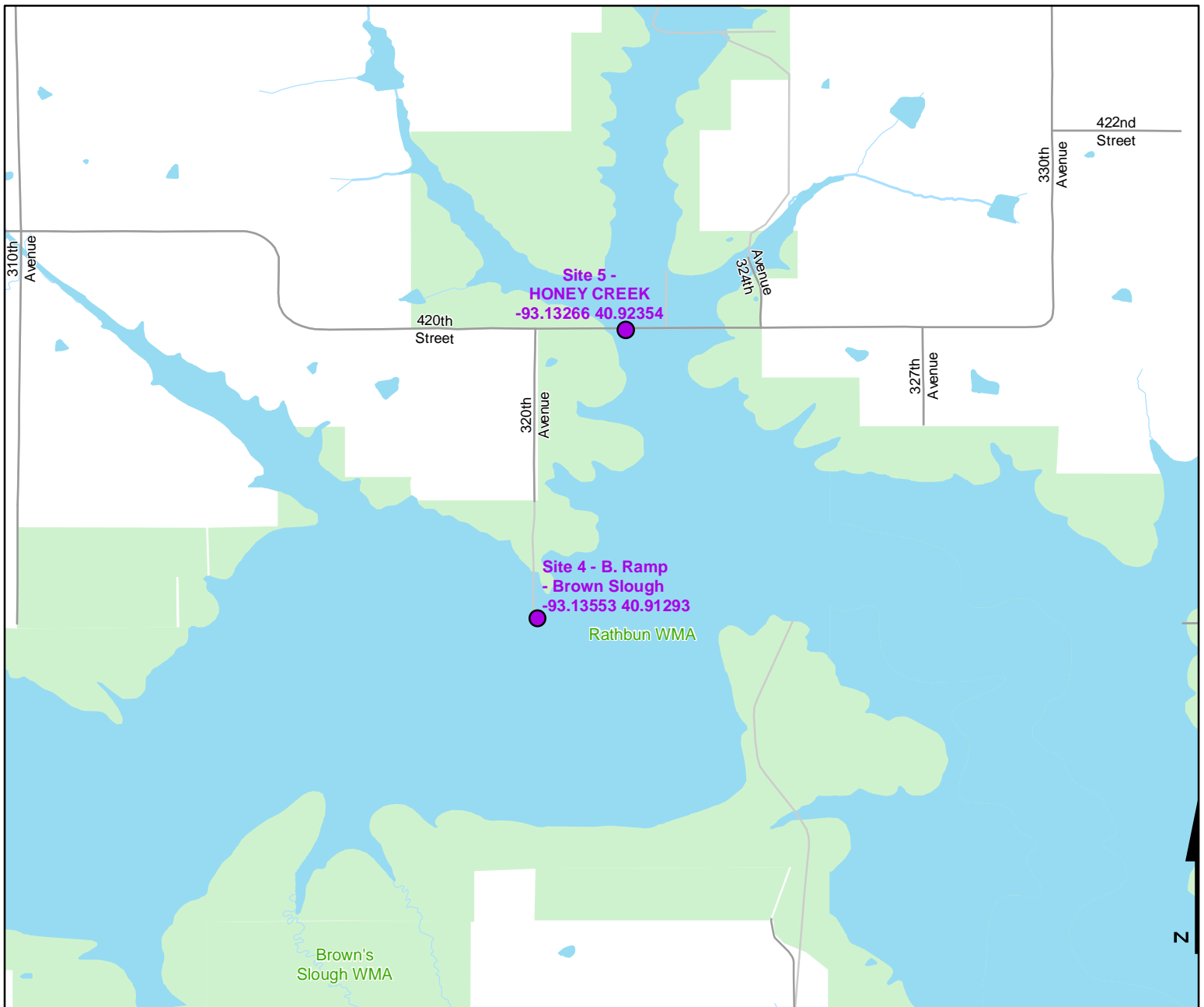




Volunteer Wildlife Monitoring Program (VWMP) Frog and Toad Survey

Route ID: 67 County: Lucas

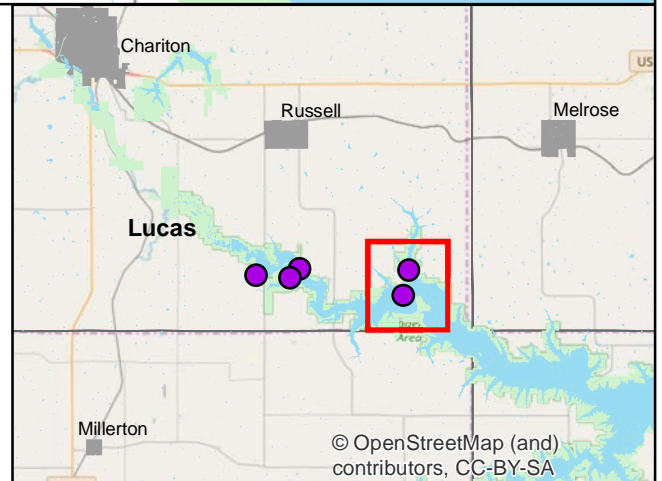
Click for Google Maps to Site 1: <https://www.google.com/maps/dir/?api=1&destination=40.9213650736,-93.2166976175>



DNR
Volunteer
Wildlife
Monitoring
Program

Legend

----- Trails





Frog and Toad Call Survey Route Description

Route ID **67**

Established: 1992

Site Number	Name	County	Latitude	Longitude	Directions
1	JOHNSON'S BOTTOM	Lucas	40.9213651	-93.2166976	Johnson's Bottom - parking lot of county gravel road
2	B. RAMP-SOUTH COLYN	Lucas	40.91423	-93.2071624	Boat Ramp at South Colyn
3	B. RAMP-North COLYN	Lucas	40.9215165	-93.1975713	Boat Ramp at North Colyn
4	B. Ramp-BROWN SLOUGH	Lucas	40.914425	-93.1405293	Bout ramp at Browns Slough - Rathbun
5	HONEY CREEK	Lucas	40.9235418	-93.1326625	Honeycreek bridge North of Browns Slough