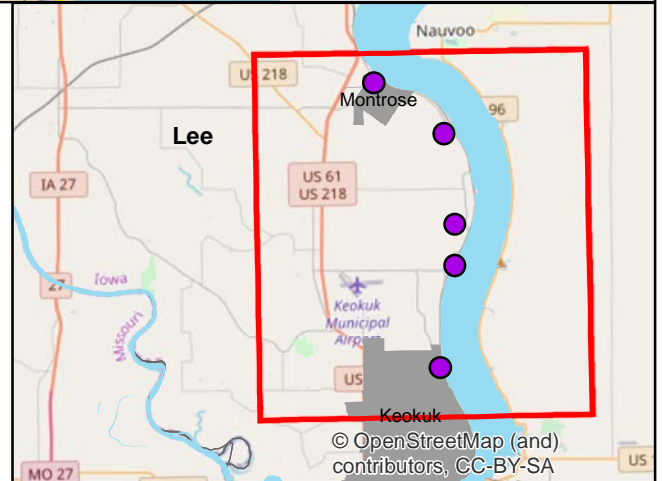
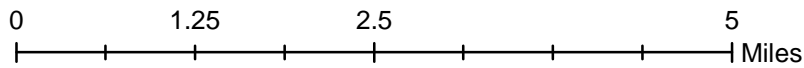
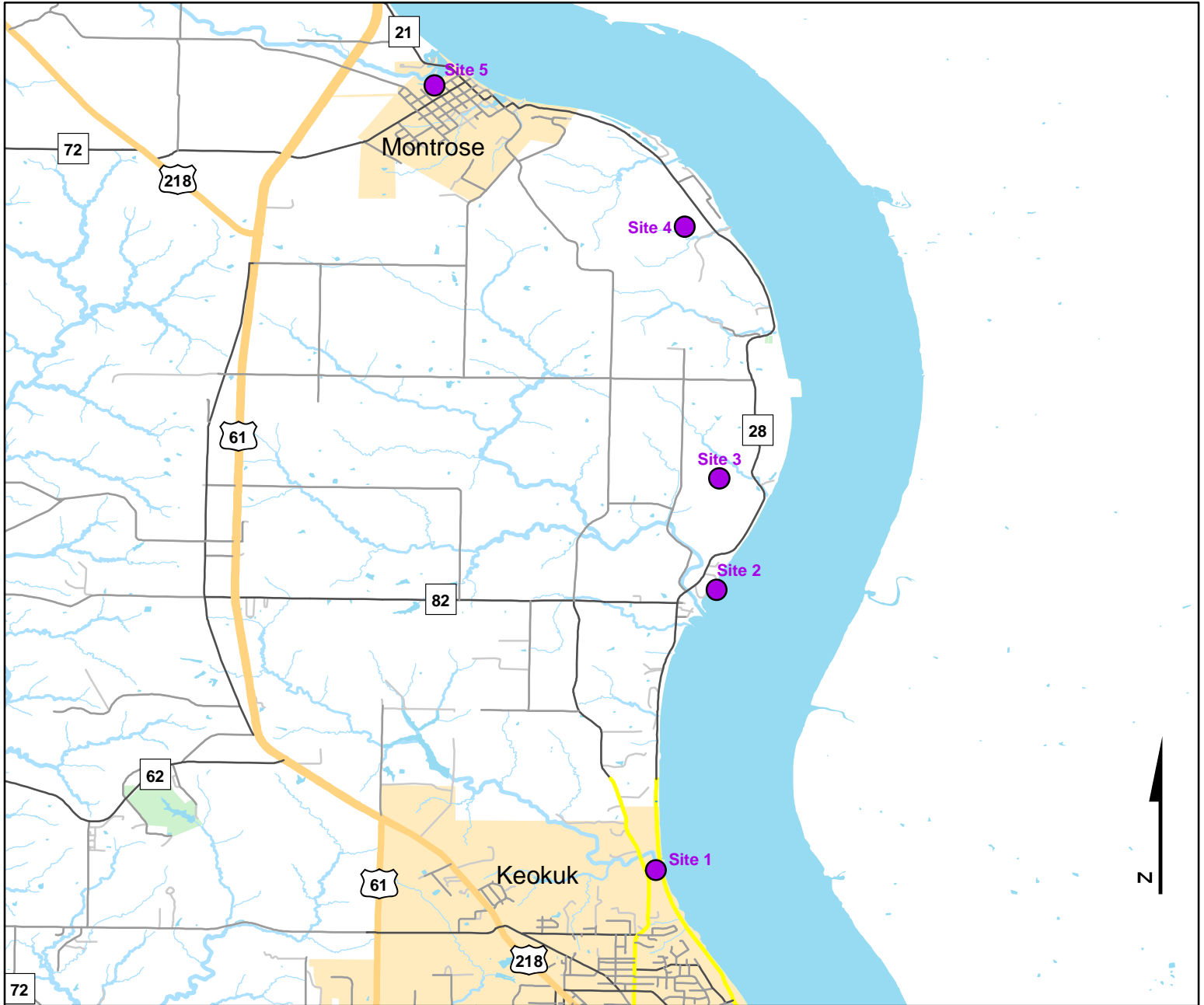




Volunteer Wildlife Monitoring Program (VWMP) Frog and Toad Survey

Route ID: 56 County: Lee

Click for Google Maps to Site 1: <https://www.google.com/maps/dir/?api=1&destination=40.4297617948,-91.3899125216>

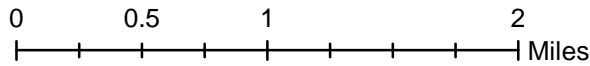
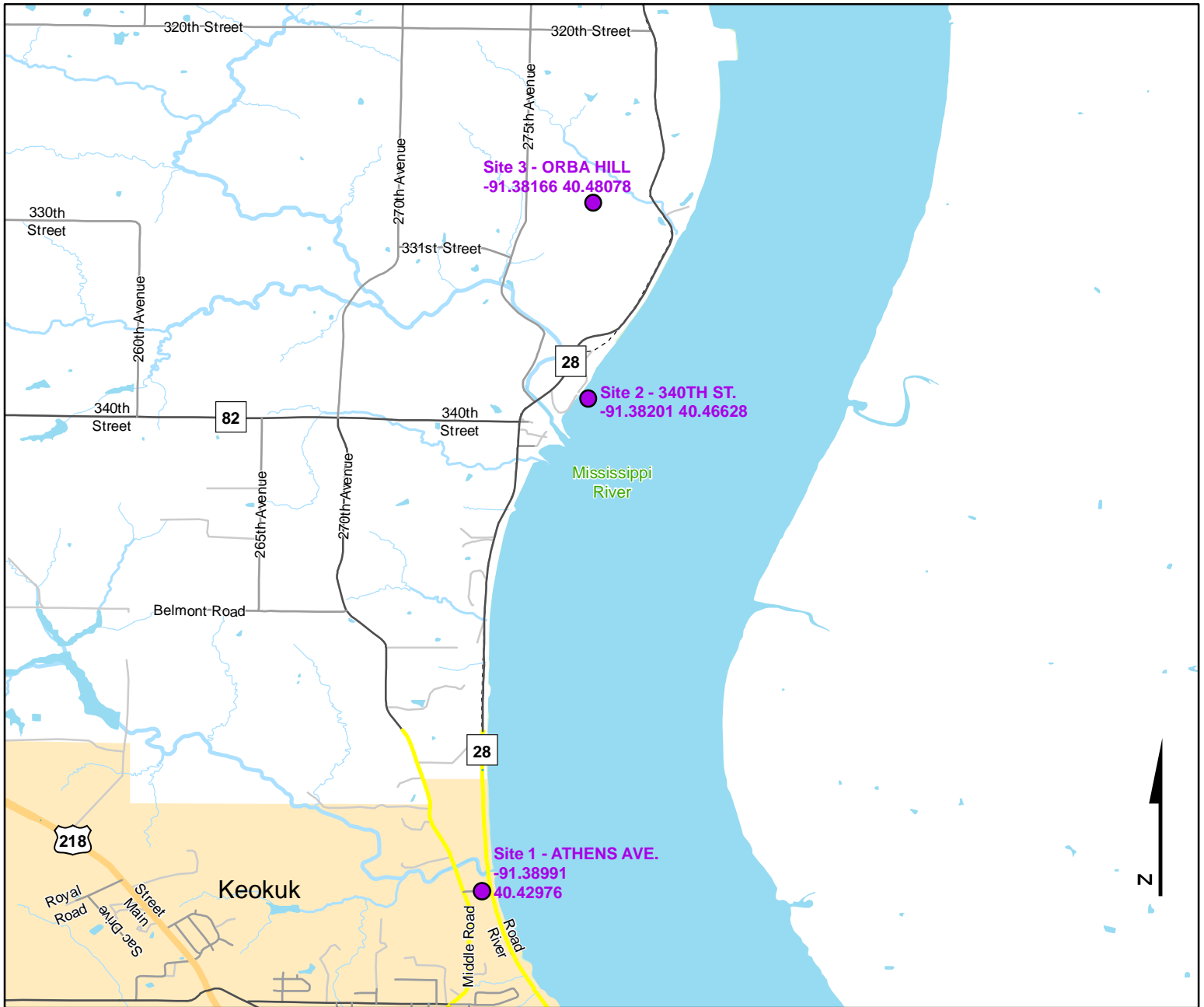




Volunteer Wildlife Monitoring Program (VWMP) Frog and Toad Survey

Route ID: 56 County: Lee

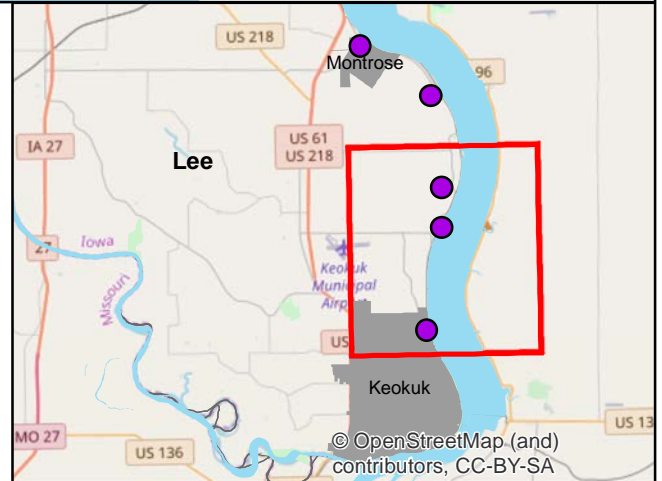
Click for Google Maps to Site 1: <https://www.google.com/maps/dir/?api=1&destination=40.4297617948,-91.3899125216>



DNR
**Volunteer
 Wildlife
 Monitoring
 Program**

Legend

----- Trails



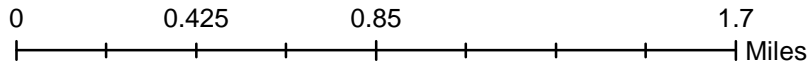
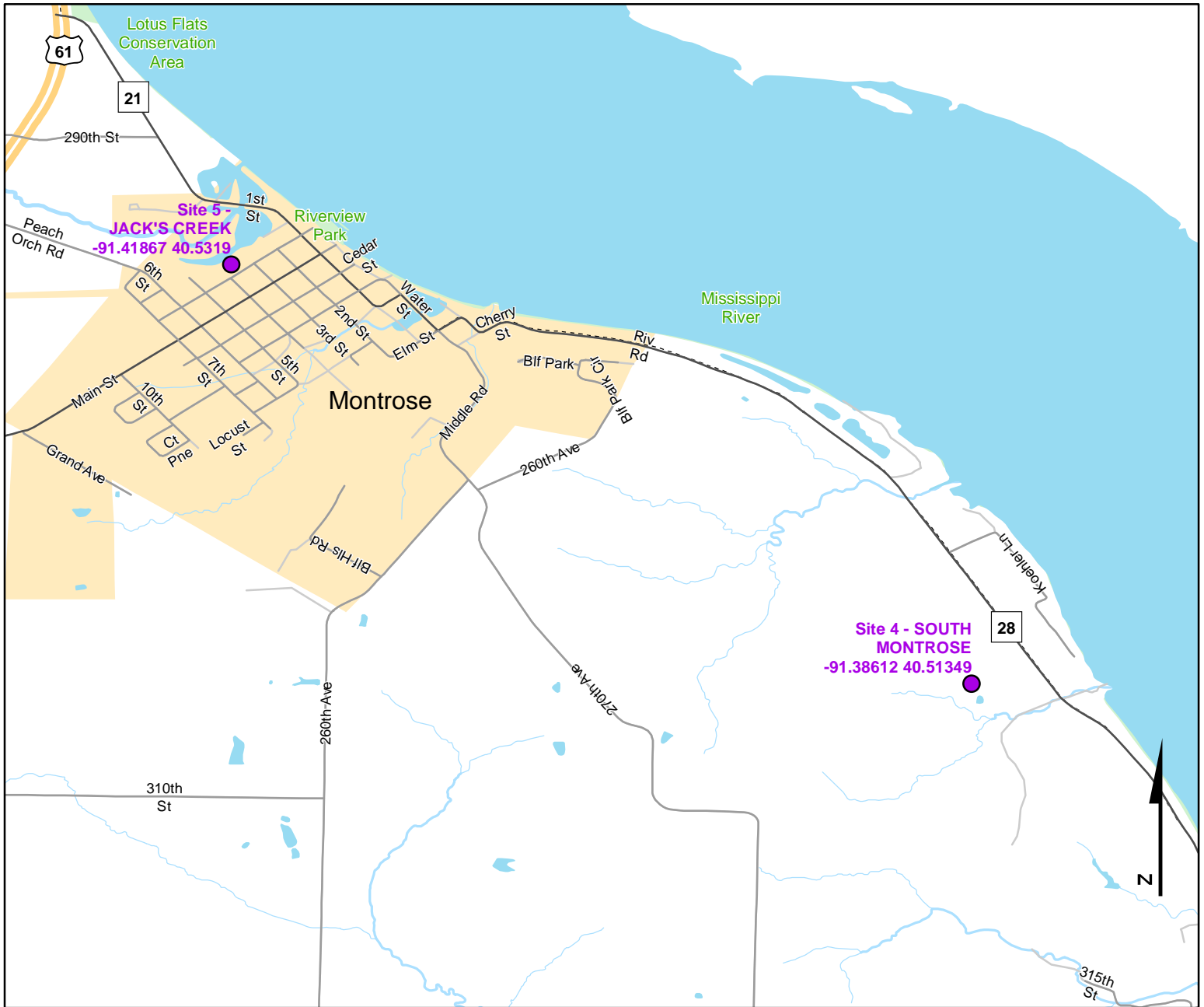
© OpenStreetMap (and) contributors, CC-BY-SA



Volunteer Wildlife Monitoring Program (VWMP) Frog and Toad Survey

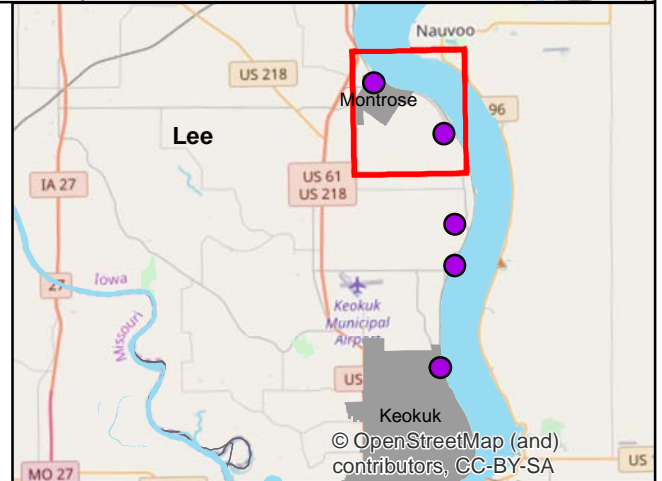
Route ID: 56 County: Lee

Click for Google Maps to Site 1: <https://www.google.com/maps/dir/?api=1&destination=40.4297617948,-91.3899125216>



Legend

----- Trails





Frog and Toad Call Survey Route Description

Route ID **56**

Established: **1992**

| Site Number | Name | County | Latitude | Longitude | Directions |
|-------------|----------------|--------|------------|-------------|--|
| 1 | ATHENS AVE. | Lee | 40.4297618 | -91.3899125 | On Athens Road, connects 270th Ave and River Rd. |
| 2 | 340TH ST. | Lee | 40.4662801 | -91.3820108 | |
| 3 | ORBA HILL | Lee | 40.4807812 | -91.3816626 | |
| 4 | SOUTH MONTROSE | Lee | 40.5134879 | -91.386117 | |
| 5 | JACK'S CREEK | Lee | 40.5319031 | -91.4186685 | |