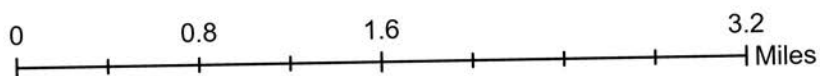
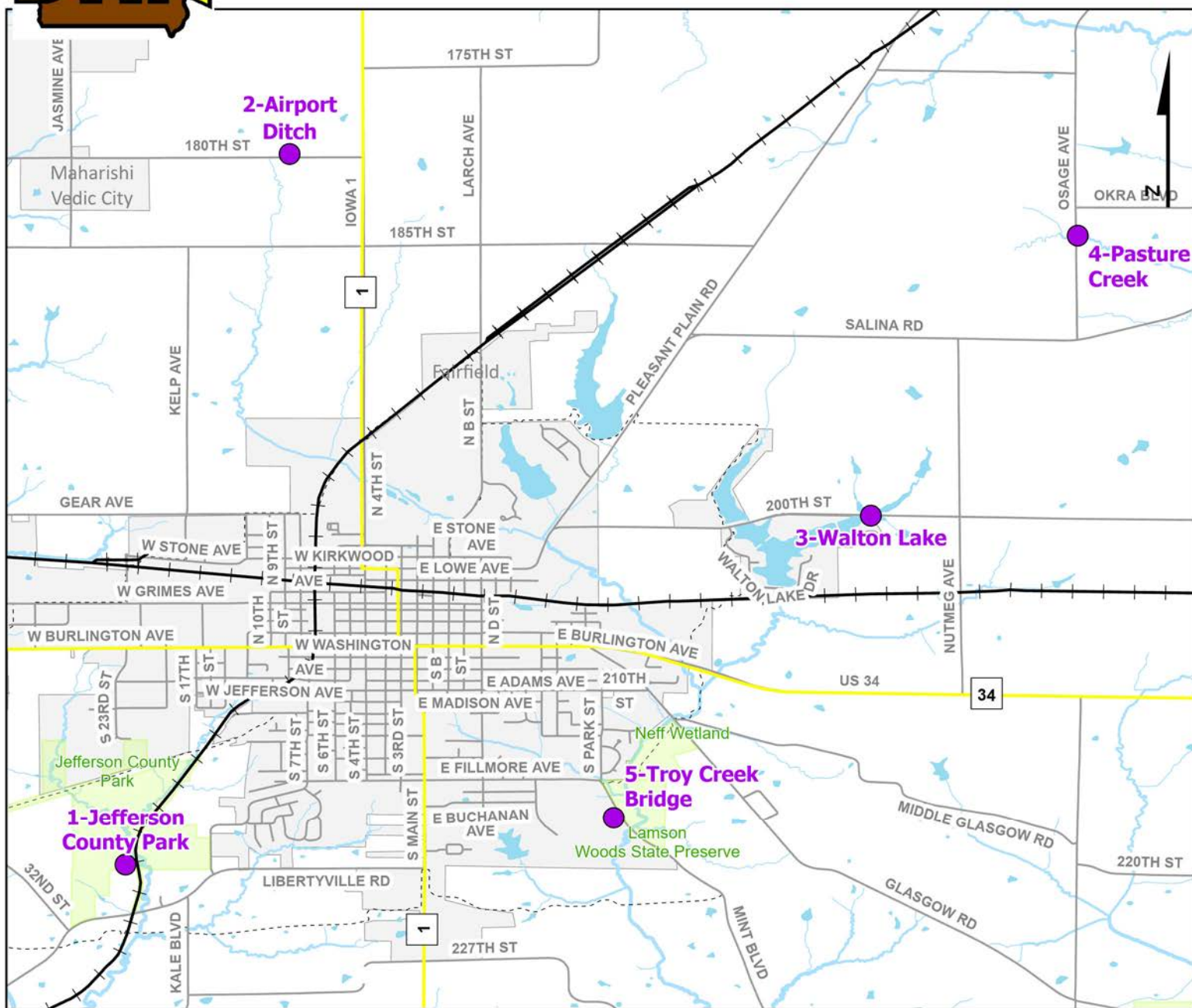


# Volunteer Wildlife Monitoring Program (VWMP) Frog and Toad Survey

Route ID: 50 County: Jefferson



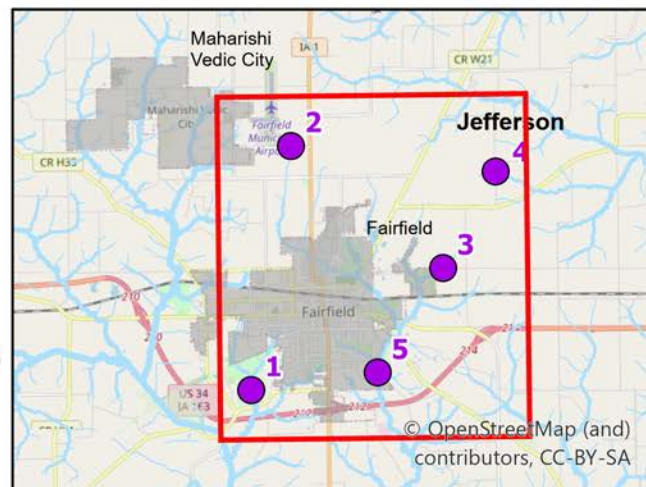
**DNR**  
Volunteer  
Wildlife  
Monitoring  
Program



## Legend

----- Trails

● Survey Stops

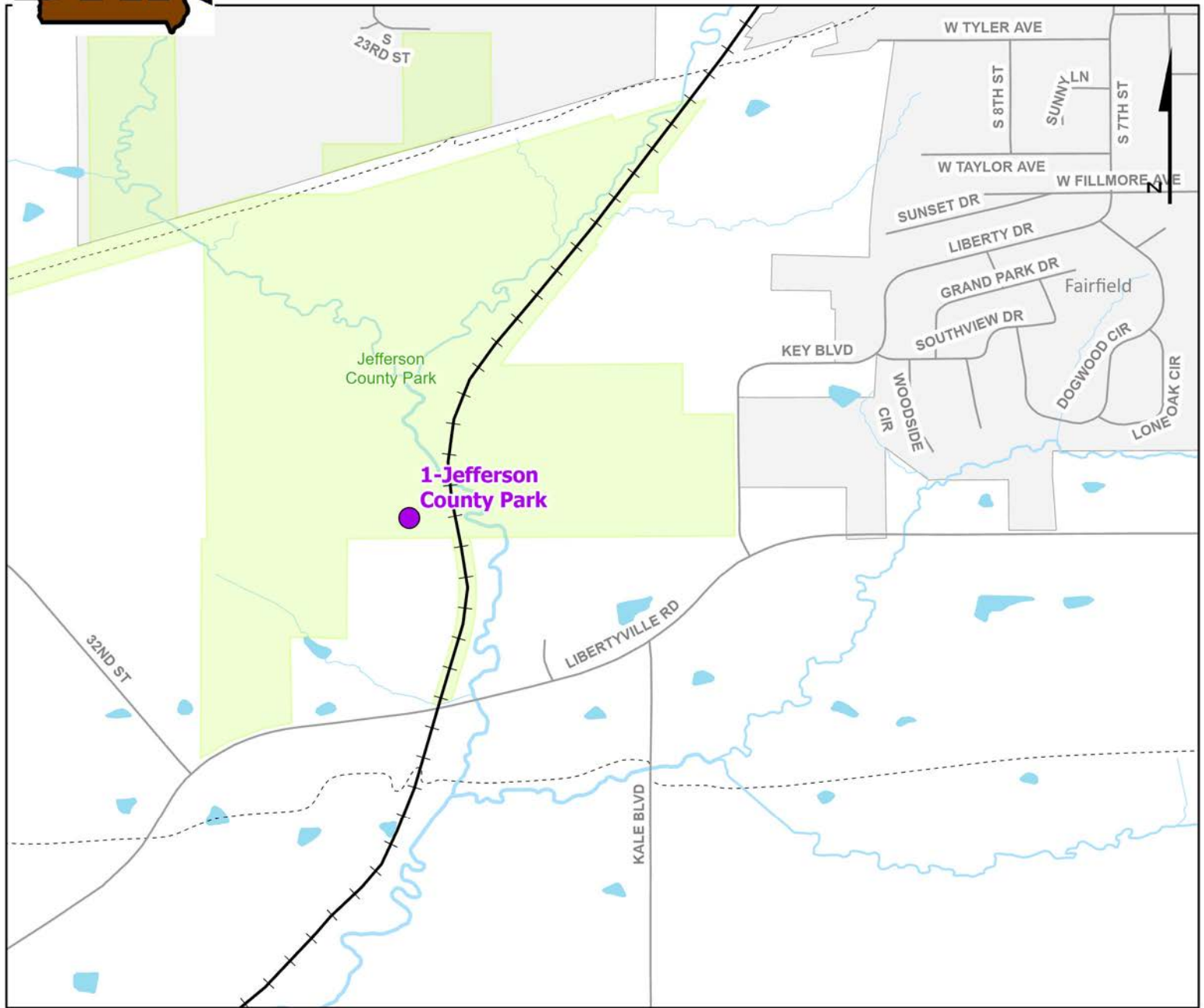






# Volunteer Wildlife Monitoring Program (VWMP) Frog and Toad Survey

Route ID: 50 County: Jefferson



0 0.21 0.42 0.84 Miles



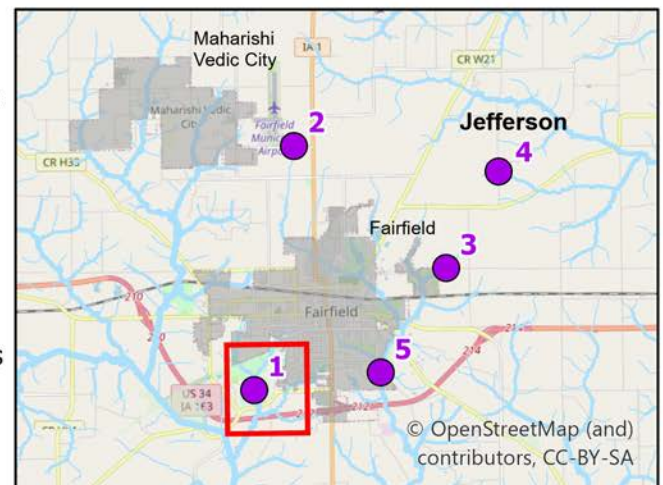
**DNR**  
Volunteer  
Wildlife  
Monitoring  
Program



## Legend

----- Trails

● Survey Stops

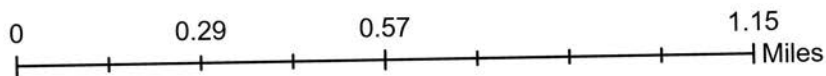
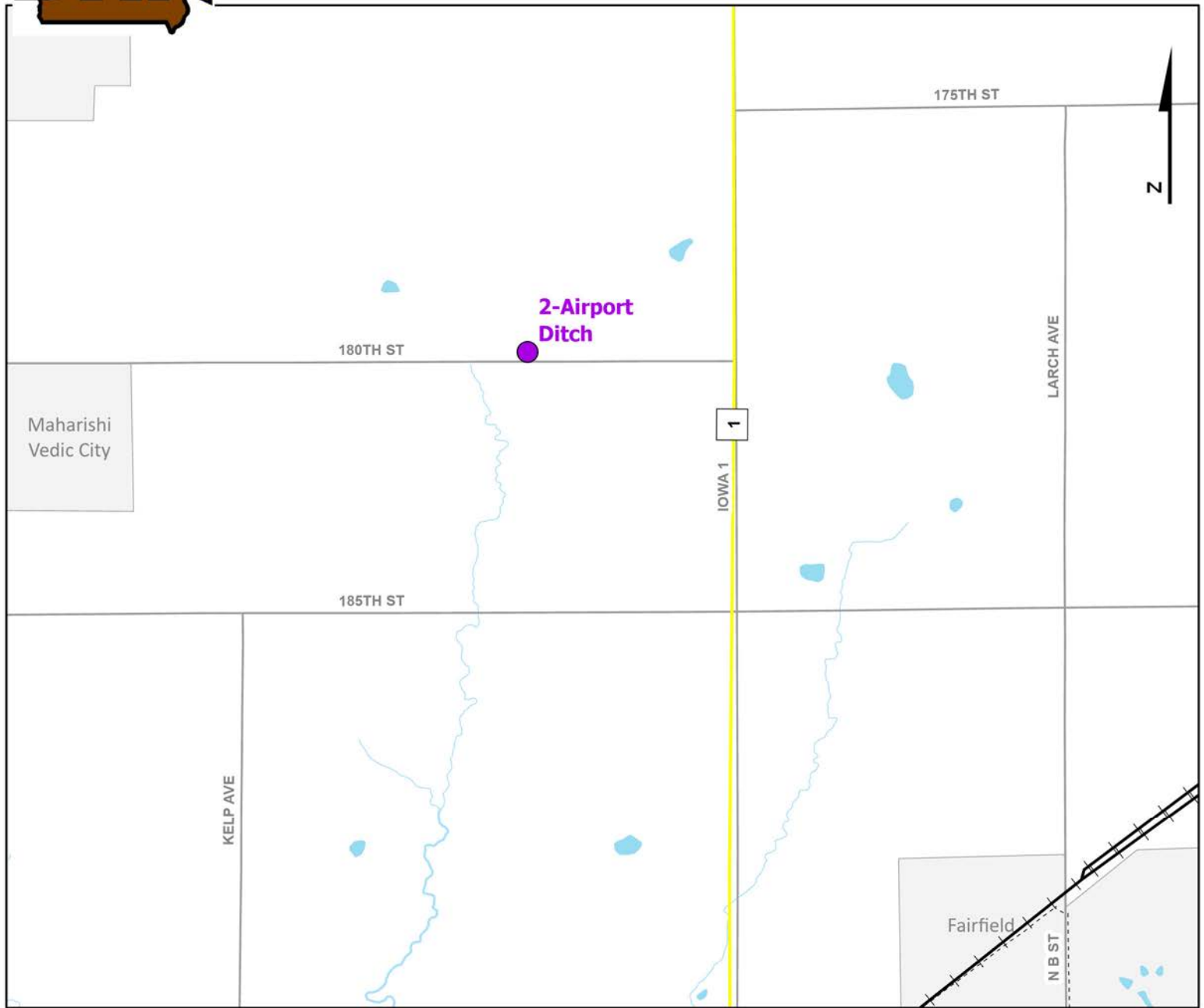






# Volunteer Wildlife Monitoring Program (VWMP) Frog and Toad Survey

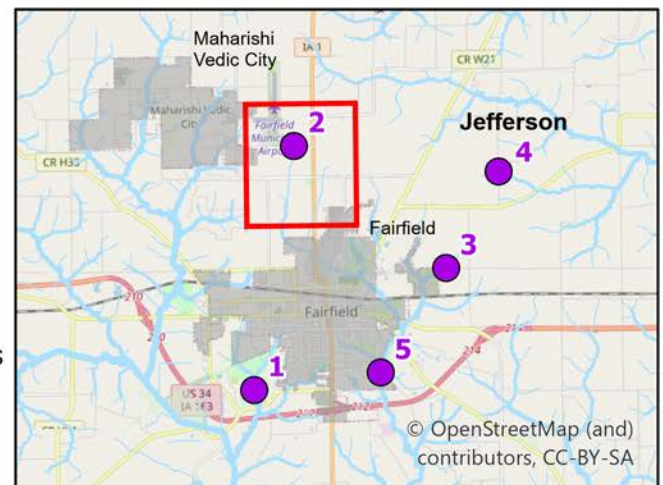
Route ID: 50 County: Jefferson



## Legend

----- Trails

● Survey Stops

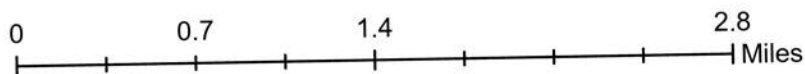
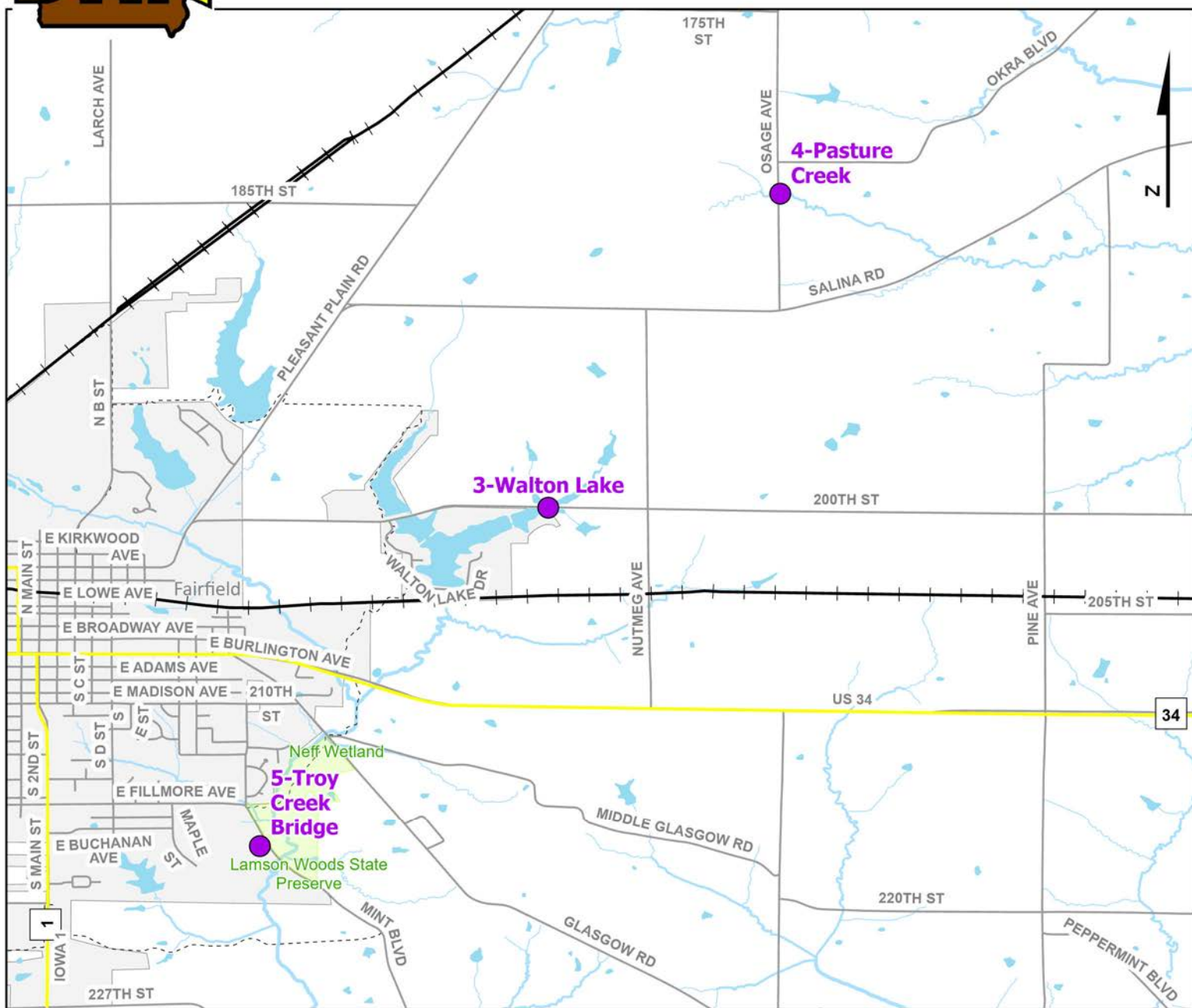




# Volunteer Wildlife Monitoring Program (VWMP) Frog and Toad Survey



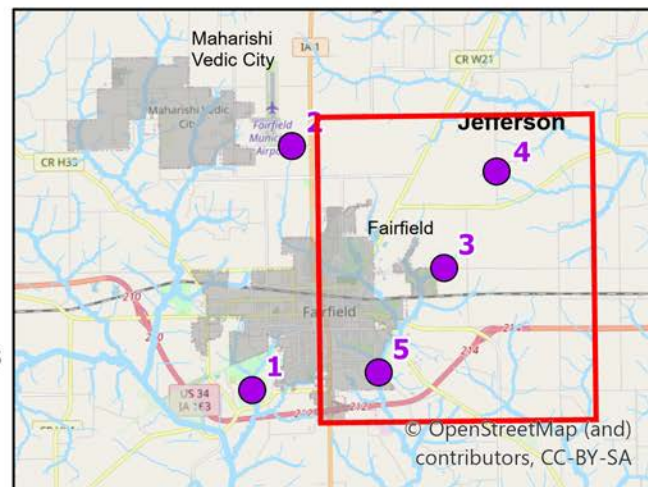
Route ID: 50 County: Jefferson



## Legend

----- Trails

● Survey Stops





## Survey Route Description

Route	50
Name	
Address	
Phone	
E-mail	

<b>Site No</b>	<b>Site Name</b>	<b>County</b>	<b>T</b>	<b>R</b>	<b>S</b>	<b>Q</b>	<b>Latitude</b>	<b>Longitude</b>	<b>Wetland Type</b>
1	Jefferson County Park	Jefferson	72N	10W	34	SE	40.9886626	-91.9876191	Permanent Open Water
	Description:	Jefferson county park woodland pond next to road leading to first picnic area.							
2	Airport Ditch	Jefferson	72N	10W	11	SE	41.0467987	-91.9741993	Ephemeral Flooded Area
	Description:	Ditch by road, 100 yards east of Holst mailbox, 1/4 mile west of Hwy 1.							
3	Walton Lake	Jefferson	72N	9W	29	NW	41.0172430	-91.9266570	Permanent Open Water
	Description:	Eastern end, Lake pools on both sides of road							
4	Pasture Creek	Jefferson	72N	9W	16	SW	41.0401265	-91.9097362	Open Riverine
	Description:	Gravel road (Osage Ave.) north from Salina Rd., 1/2 mile to dip where creek crosses road.							
5	Troy Creek Bridge	Jefferson	72N	09W	31		40.9925240	-91.9476900	Hab Type Not recorded
	Description:	At the T Intersection at Fillmore Ave., Park St., Mint Blvd, take a right on Mint for 0.25 miles. Wetland on left. Before you get tp Troy Creek Bridge.							