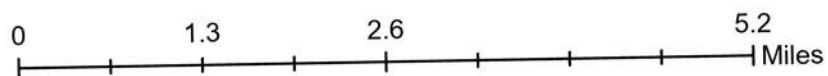
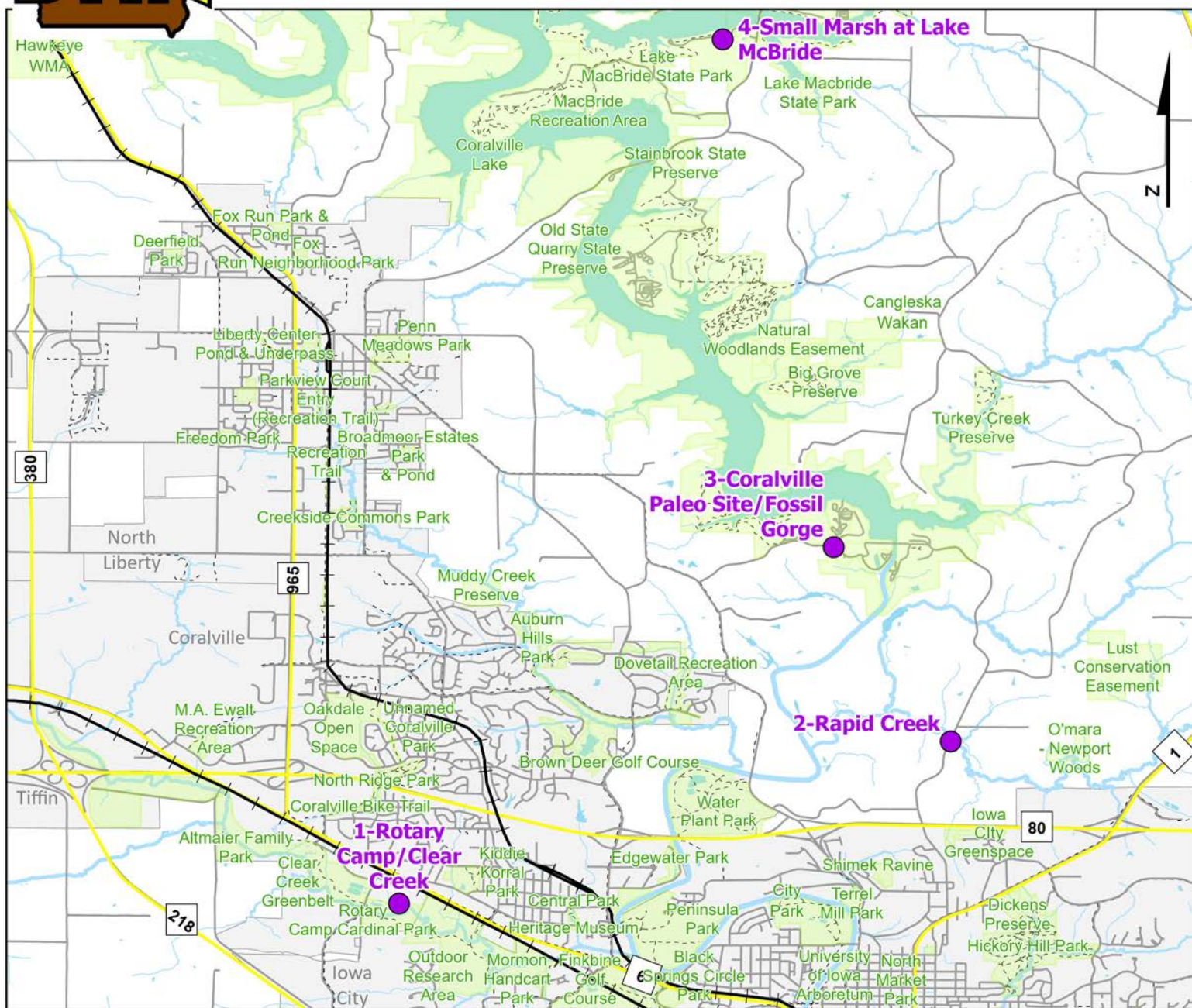


# Volunteer Wildlife Monitoring Program (VWMP) Frog and Toad Survey

Route ID:21 County: Johnson

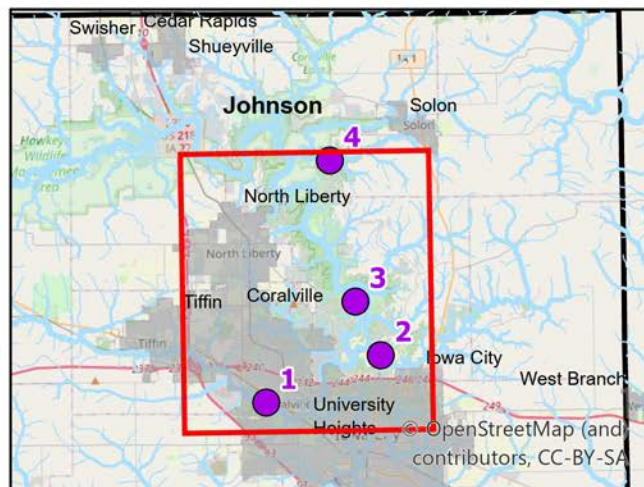


**DNR**  
Volunteer  
Wildlife  
Monitoring  
Program



## Legend

----- Trails  
● Survey Stops

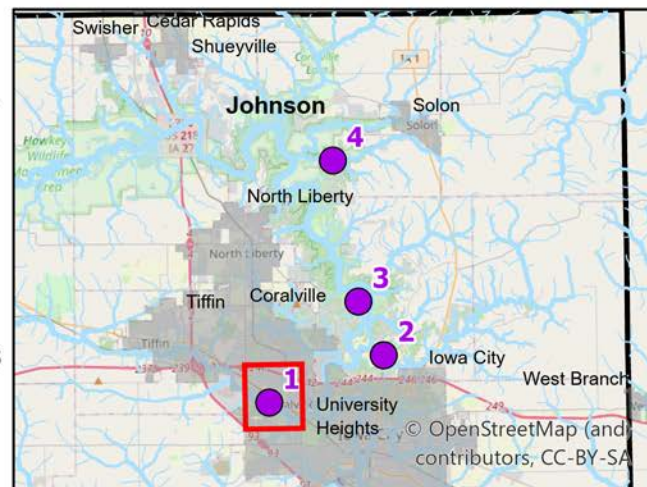
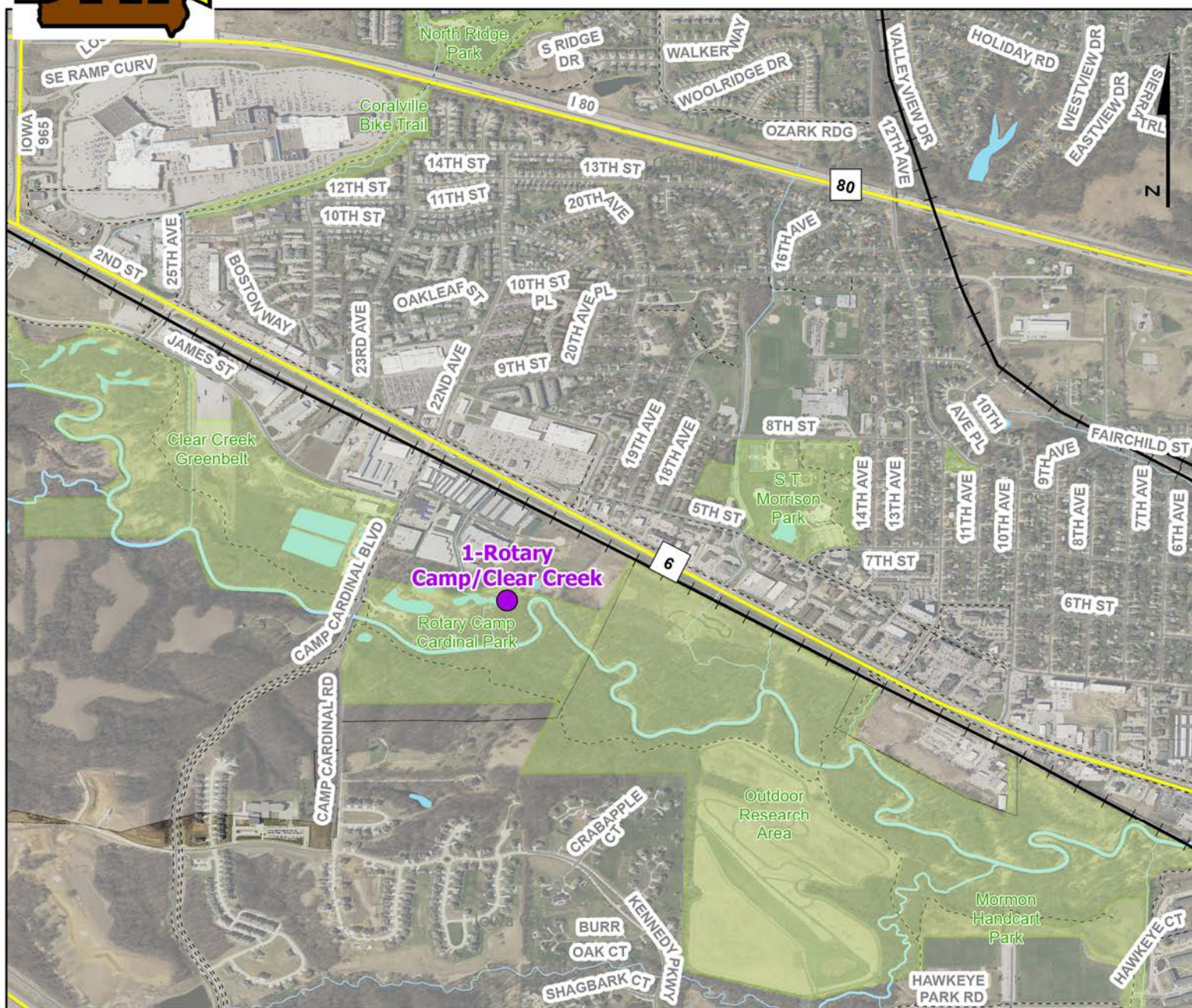


Questions? Contact the VWMP Coordinator at [vwmp@dnr.iowa.gov](mailto:vwmp@dnr.iowa.gov). Created on:5/1/2025



# Volunteer Wildlife Monitoring Program (VWMP) Frog and Toad Survey

Route ID:21 County: Johnson



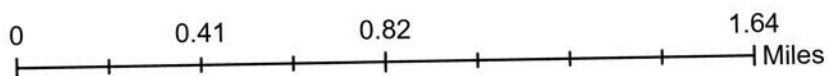
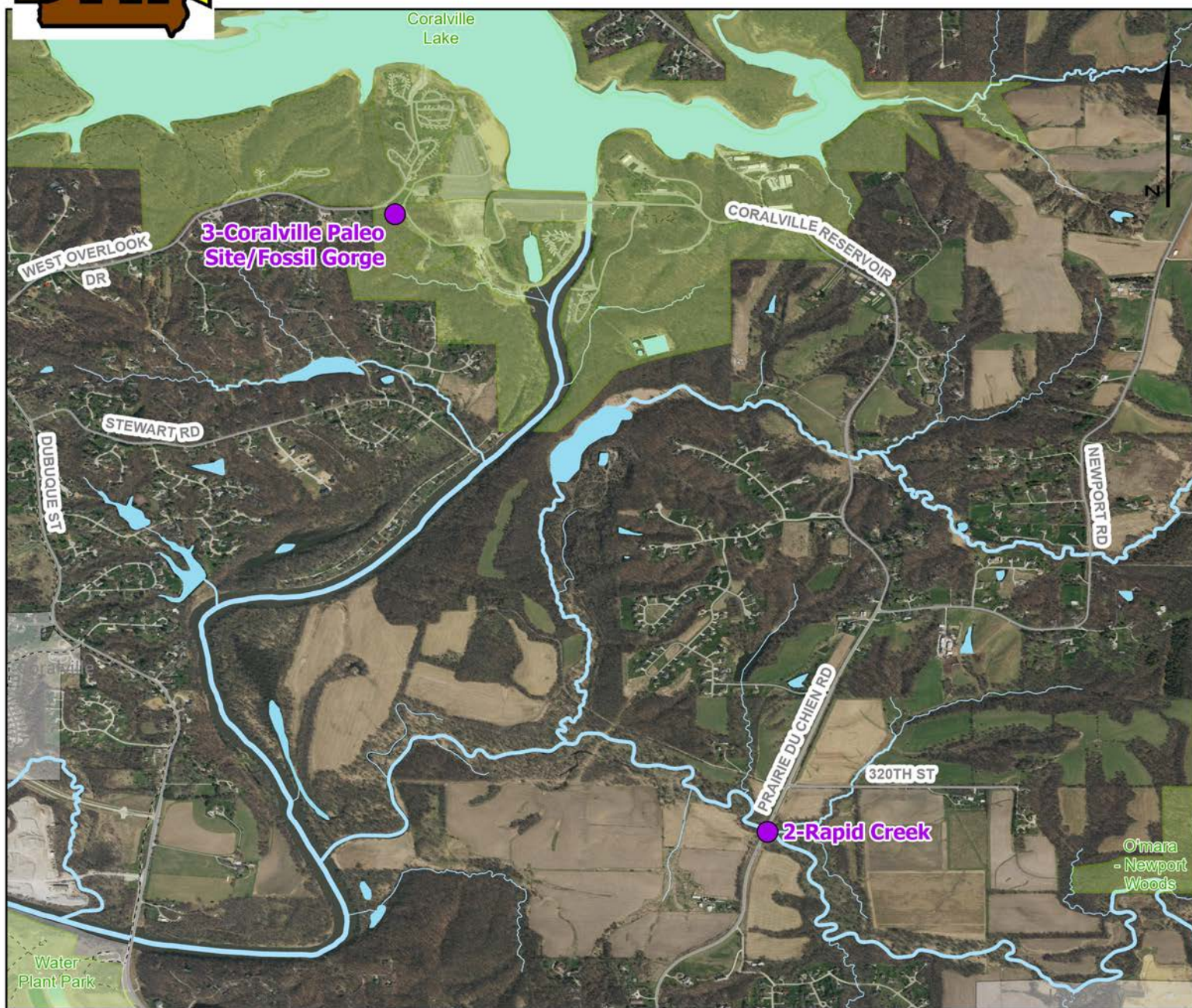
Questions? Contact the VWMP Coordinator at [vwmp@dnr.iowa.gov](mailto:vwmp@dnr.iowa.gov). Created on:5/1/2025



# Volunteer Wildlife Monitoring Program (VWMP) Frog and Toad Survey

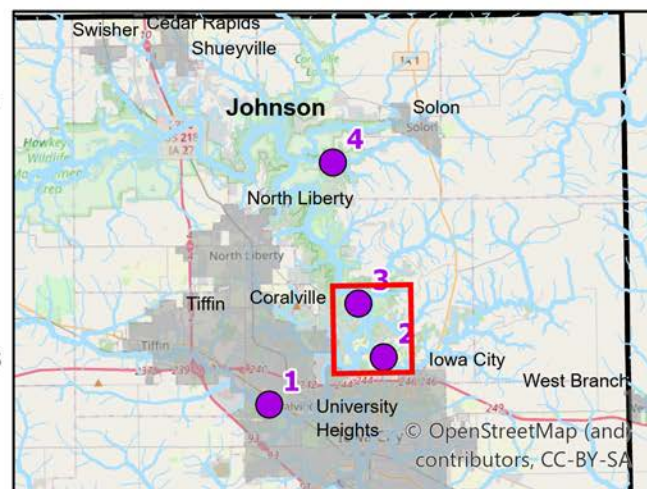


Route ID:21 County: Johnson



## Legend

- Trails
- Survey Stops

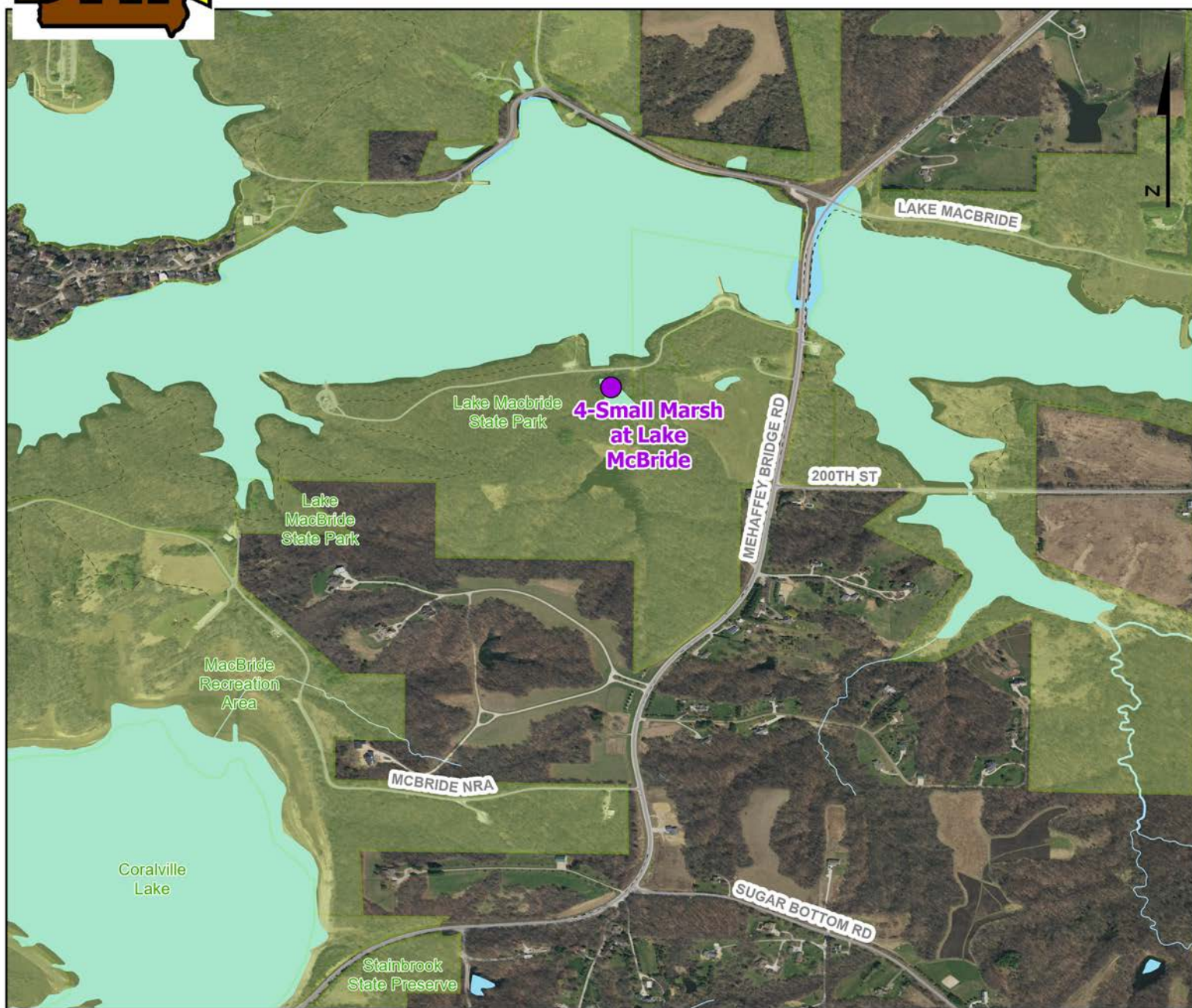




# Volunteer Wildlife Monitoring Program (VWMP) Frog and Toad Survey



Route ID:21 County: Johnson



0 0.24 0.48 0.96 Miles

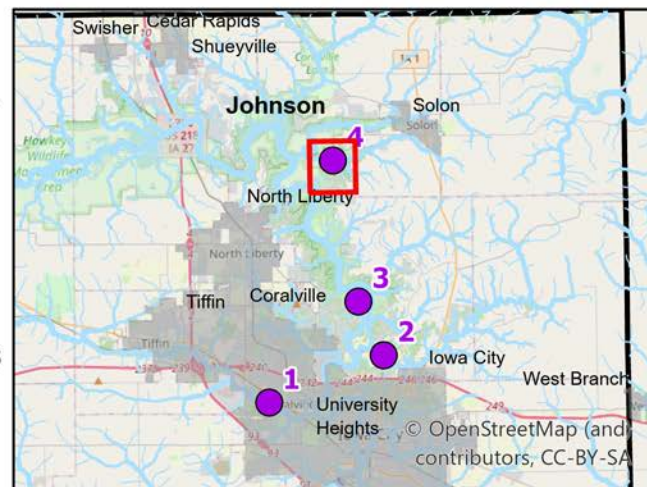


**DNR**  
Volunteer  
Wildlife  
Monitoring  
Program



## Legend

----- Trails  
● Survey Stops



Questions? Contact the VWMP Coordinator at [vwmp@dnr.iowa.gov](mailto:vwmp@dnr.iowa.gov). Created on:5/1/2025

## Survey Route Description

E-mail

Site No	Site Name	County	T	R	S	Q	Latitude	Longitude	Wetland Type
1	Rotary Camp/Clear Creek	Johnson	79N	6W	6	SW	41.6768886	-91.5935814	Open Marsh
2	Rapid Creek	Johnson	81N	6W	35	NW	41.6983828	-91.5207306	Timbered Riverine
	Description:	Bridge on Prairie Du Chien Road.crossing Rapid Creek.							
3	Coralville Paleo Site/Fossil Gorge	Johnson	80N	6W	22	C	41.7240158	-91.5361806	Open Riverine
4	Small Marsh at Lake McBride	Johnson	81N	6W	28	SW	41.7910043	-91.5508323	Permanent Open Water
	Description:	Located adjacent to Angler's Point Road, on the south side of the road, approximately 525 yards west of Mehaffey Bridge Road NE and 75 yards east of a small parking lot. Use the small parking lot to turn around, and park along the south side of Angler's Point Road to listen for amphibians. On Angler's Point Rd. NE, just south of road. Parking lot is just past the pond.							