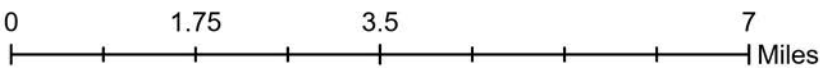
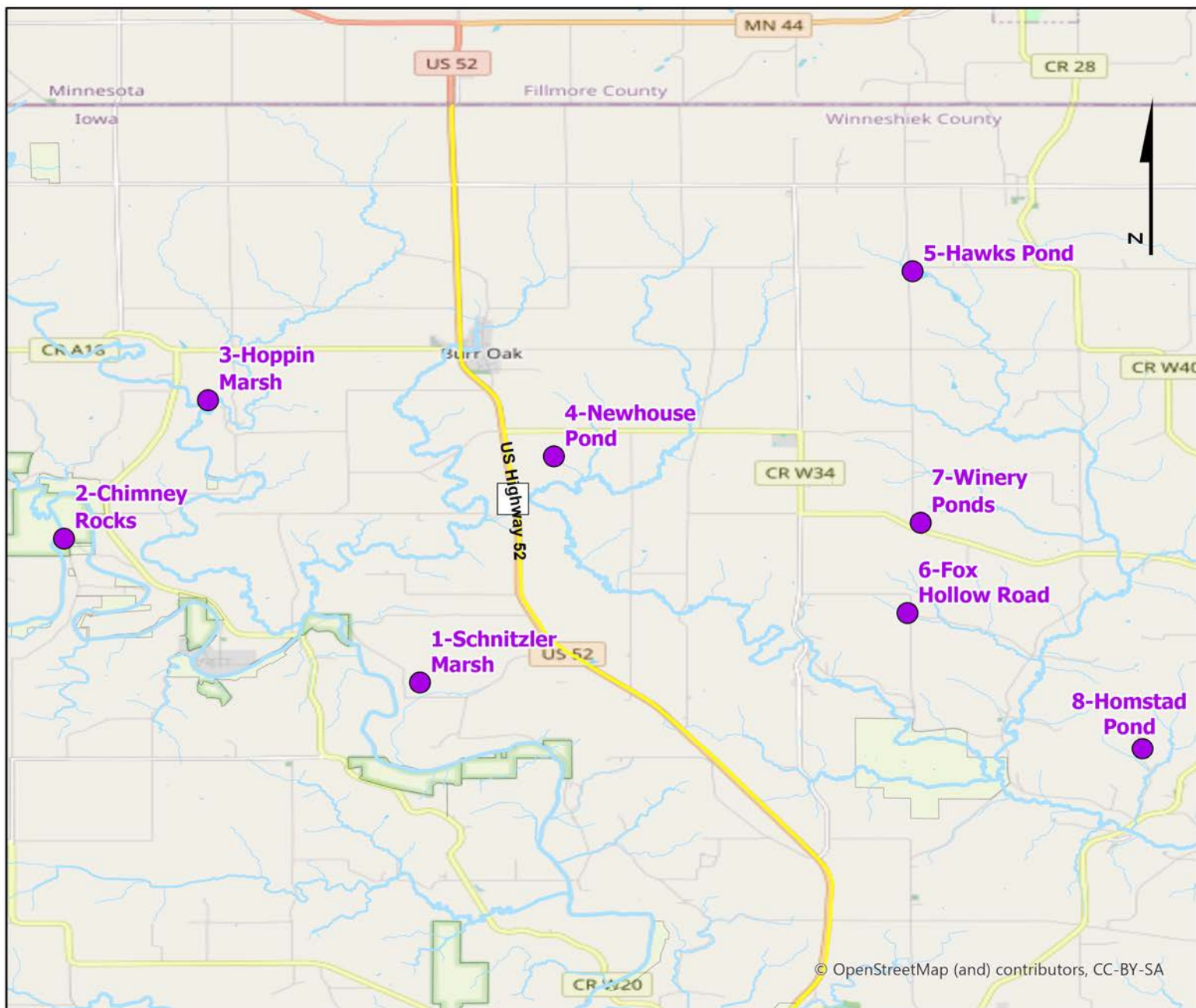


# Volunteer Wildlife Monitoring Program (VWMP) Frog and Toad Survey



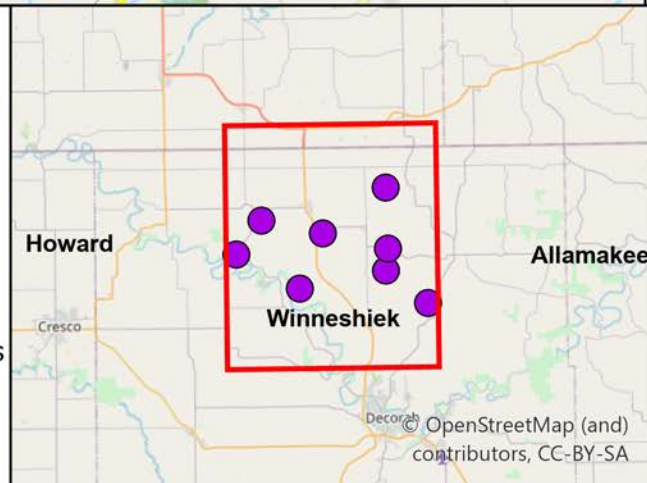
Route ID: 45 County: Winneshiek



## Legend

..... Trails

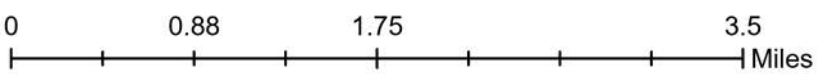
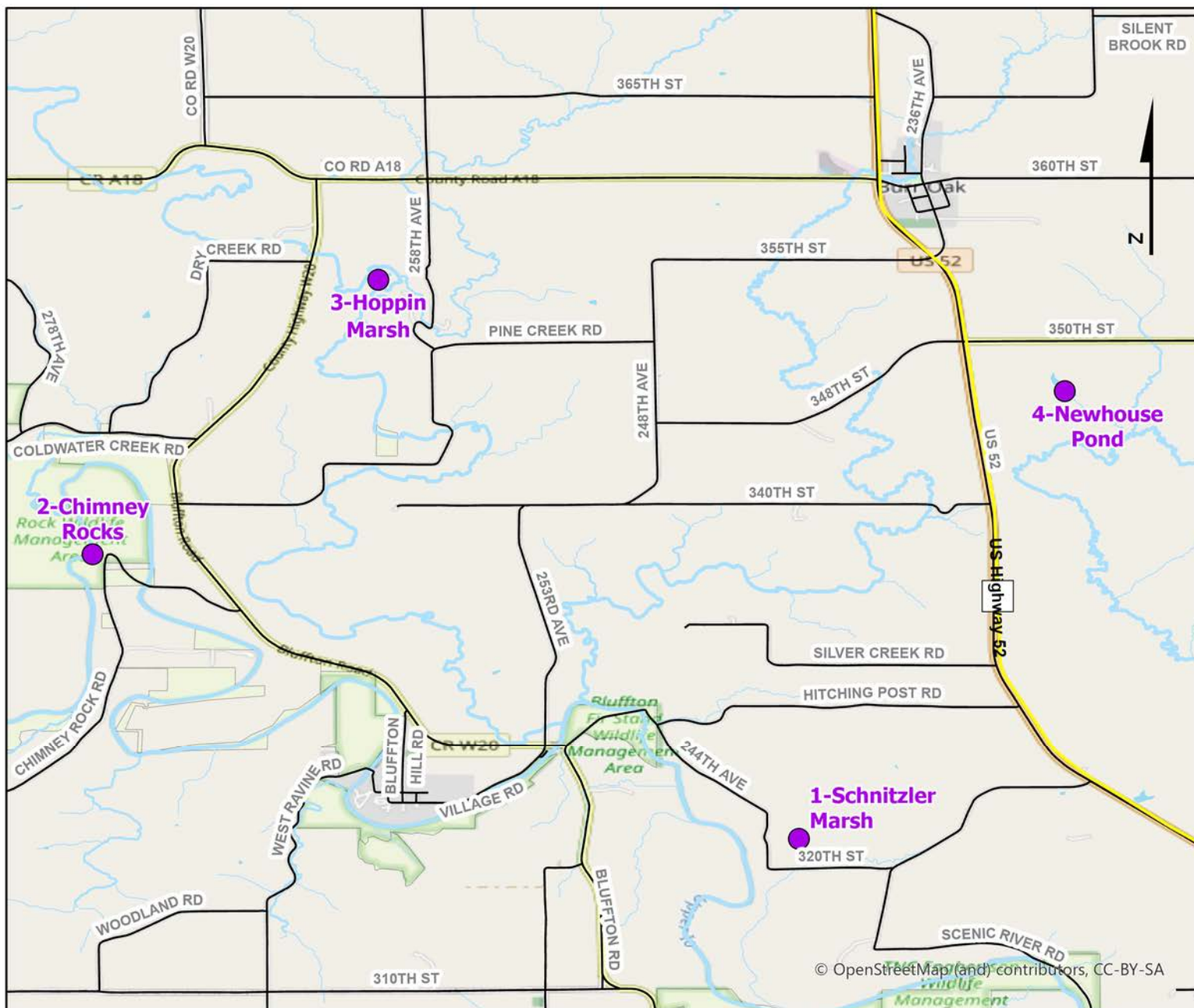
● Survey Stops



# Volunteer Wildlife Monitoring Program (VWMP) Frog and Toad Survey

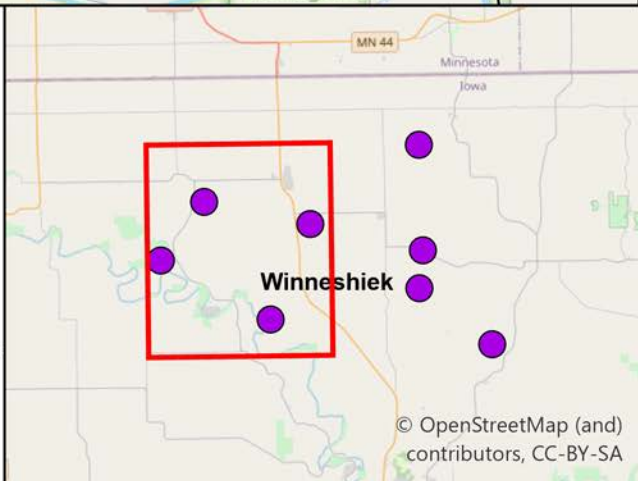


Route ID: 45 County: Winneshiek



**DNR**  
**Volunteer Wildlife Monitoring Program**

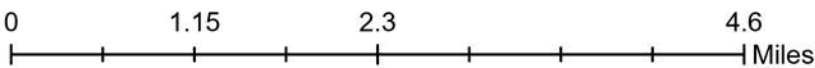
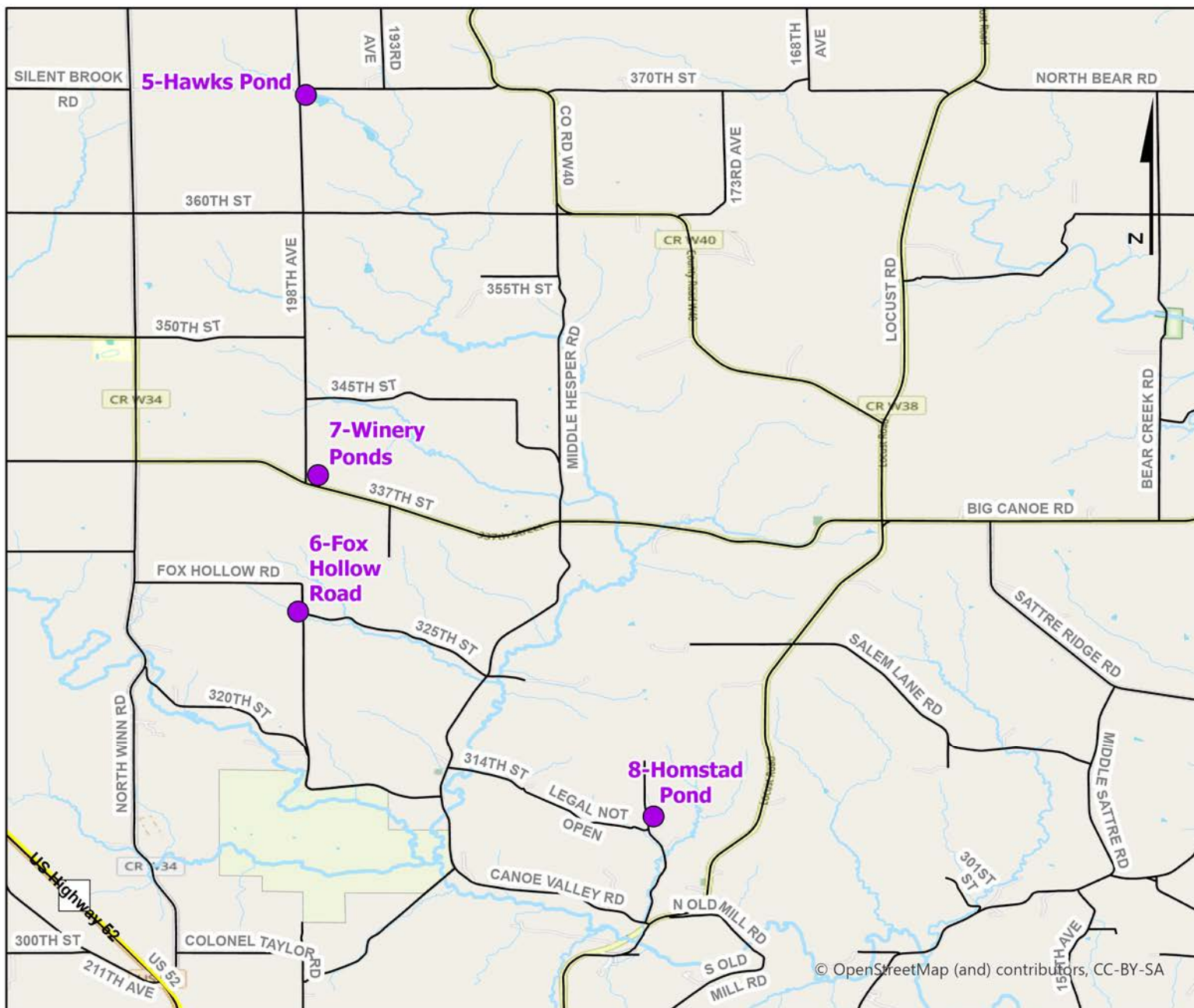
**Legend**  
 - - - - Trails  
 ● Survey Stops



# Volunteer Wildlife Monitoring Program (VWMP) Frog and Toad Survey



Route ID: 45 County: Winneshiek

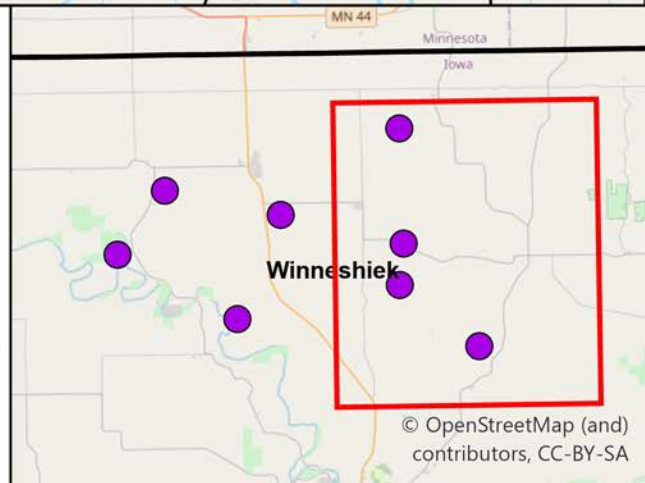


**DNR**  
Volunteer  
Wildlife  
Monitoring  
Program



## Legend

- Trails
- Survey Stops





# Frog and Toad Call Survey Route Description

Route ID

Established:

Site Number	Name	County	Latitude	Longitude	Directions
<input type="text" value="1"/>	<input type="text" value="Schnitzler Marsh"/>	<input type="text" value="Winneshiek"/>	<input type="text" value="43.3988065"/>	<input type="text" value="-91.8765431"/>	<input type="text" value="Old oxbow"/>
<input type="text" value="2"/>	<input type="text" value="Chimney Rocks"/>	<input type="text" value="Winneshiek"/>	<input type="text" value="43.4241685"/>	<input type="text" value="-91.9393754"/>	<input type="text" value="West side of Upper Iowa west of Chimney Rocks entrance"/>
<input type="text" value="3"/>	<input type="text" value="Hoppin Marsh"/>	<input type="text" value="Winneshiek"/>	<input type="text" value="43.4485658"/>	<input type="text" value="-91.9139596"/>	
<input type="text" value="4"/>	<input type="text" value="Newhouse Pond"/>	<input type="text" value="Winneshiek"/>	<input type="text" value="43.438668"/>	<input type="text" value="-91.8528962"/>	<input type="text" value="Field Lane between first 2 houses, south 0.5 mile to pond, harder to access now that it has become a BnB- check with Newhouse's on weekdays"/>
<input type="text" value="5"/>	<input type="text" value="Hawks Pond"/>	<input type="text" value="Winneshiek"/>	<input type="text" value="43.4713041"/>	<input type="text" value="-91.789584"/>	
<input type="text" value="6"/>	<input type="text" value="Fox Hollow Road"/>	<input type="text" value="Winneshiek"/>	<input type="text" value="43.411048"/>	<input type="text" value="-91.7904884"/>	<input type="text" value="West side of road"/>
<input type="text" value="7"/>	<input type="text" value="Winery Ponds"/>	<input type="text" value="Winneshiek"/>	<input type="text" value="43.426969"/>	<input type="text" value="-91.788159"/>	<input type="text" value="side by side ponds made in early 2000's"/>
<input type="text" value="8"/>	<input type="text" value="Homstad Pond"/>	<input type="text" value="Winneshiek"/>	<input type="text" value="43.387065"/>	<input type="text" value="-91.748998"/>	<input type="text" value="spring fed pond made in early 2000's, aerated On a private property."/>