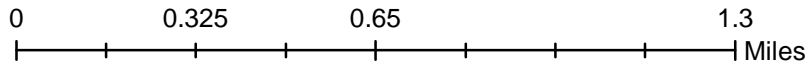
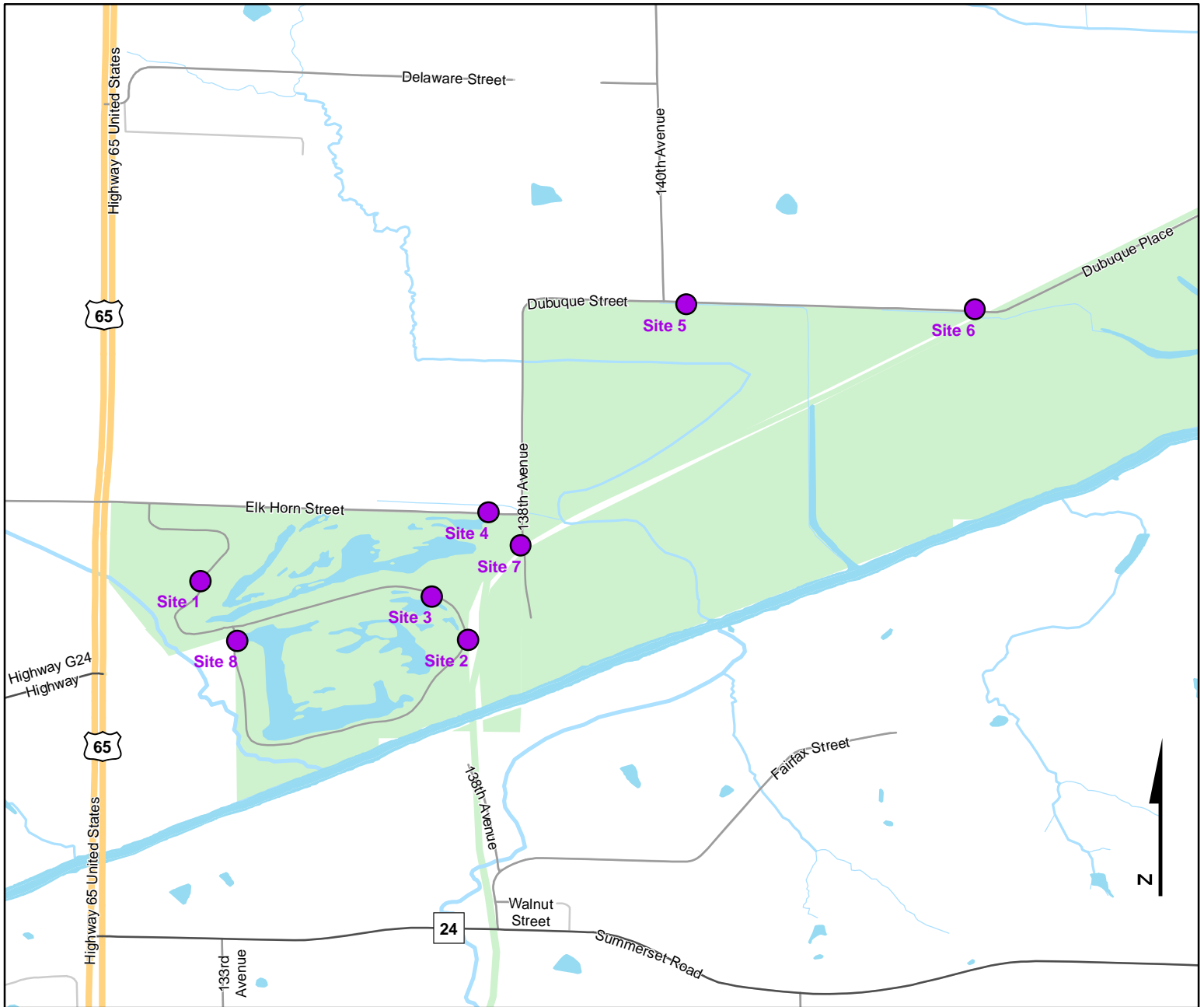




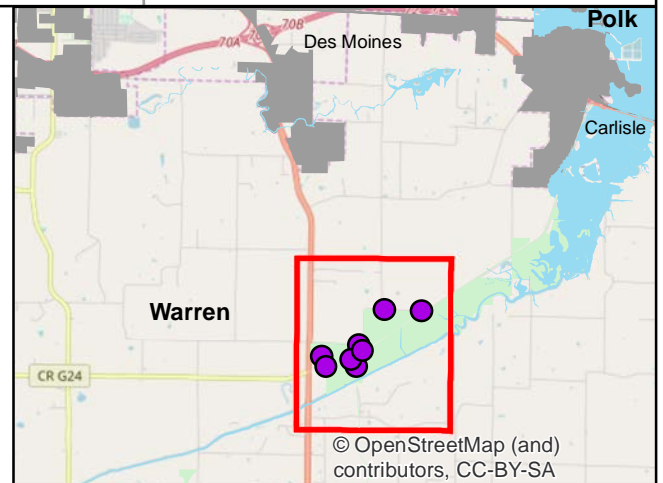
Volunteer Wildlife Monitoring Program (VWMP) Frog and Toad Survey

Route ID: 43 County: Warren

Click for Google Maps to Site 1: <https://www.google.com/maps/dir/?api=1&destination=41.4431182409,-93.5551623419>



DNR
**Volunteer
 Wildlife
 Monitoring
 Program**



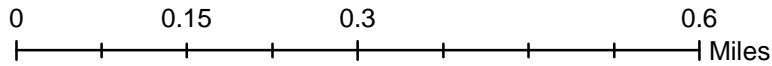
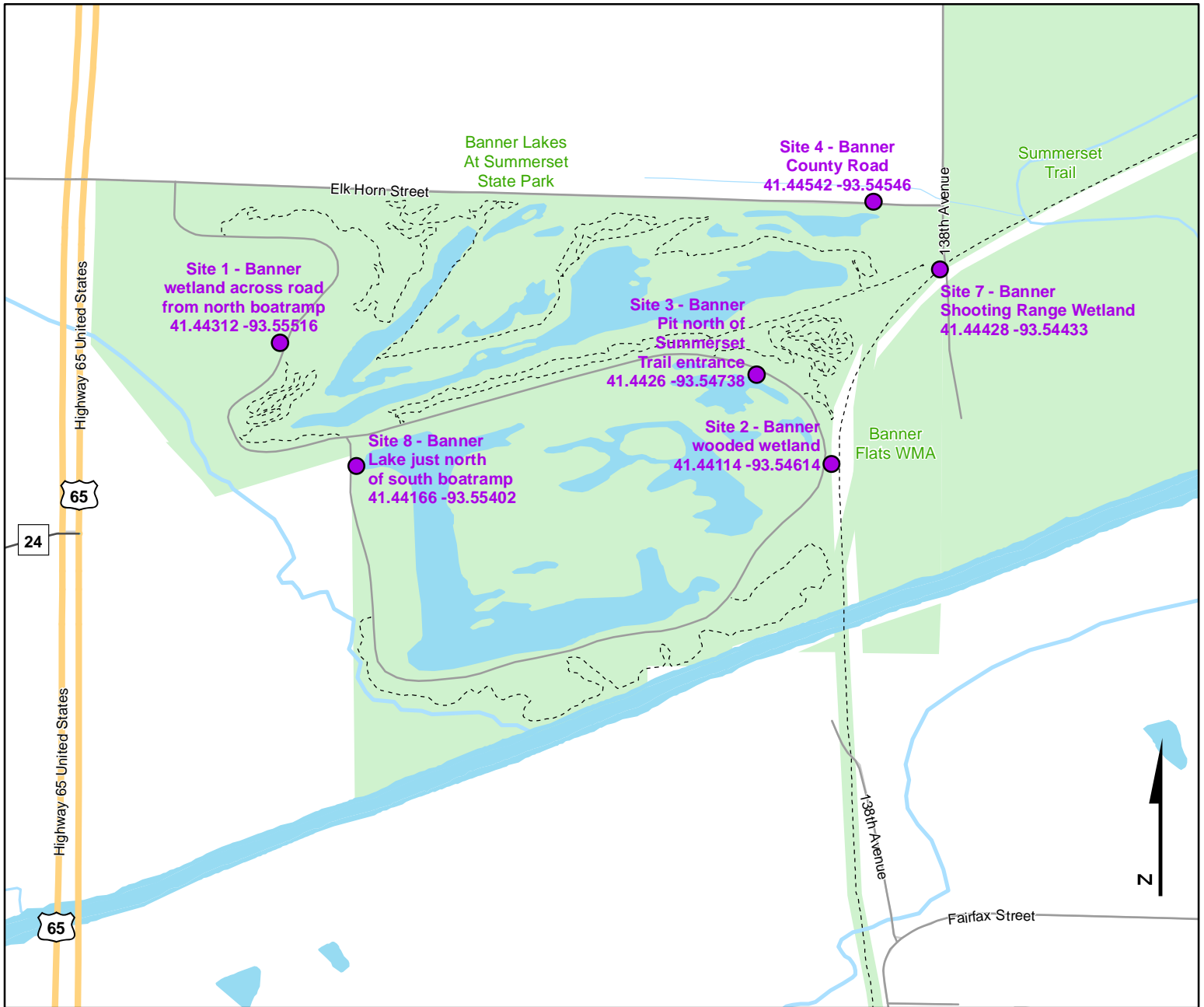
© OpenStreetMap (and contributors), CC-BY-SA



Volunteer Wildlife Monitoring Program (VWMP) Frog and Toad Survey

Route ID: 43 County: Warren

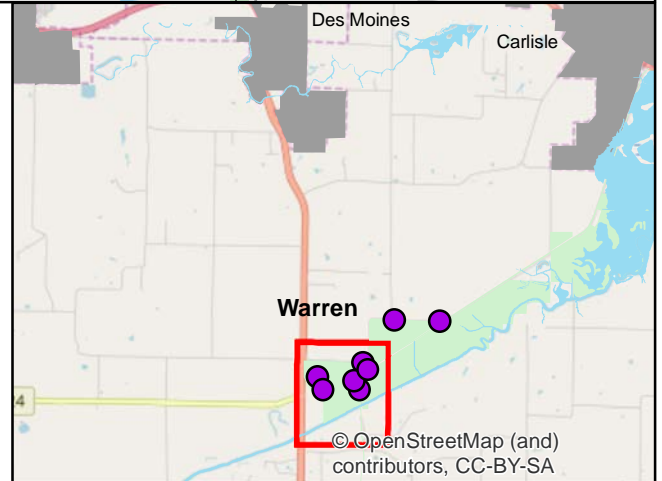
Click for Google Maps to Site 1: <https://www.google.com/maps/dir/?api=1&destination=41.4431182409,-93.5551623419>



DNR
Volunteer Wildlife Monitoring Program

Legend

----- Trails

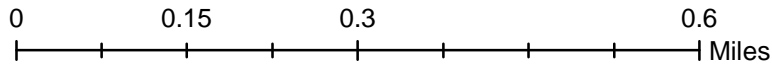




Volunteer Wildlife Monitoring Program (VWMP) Frog and Toad Survey

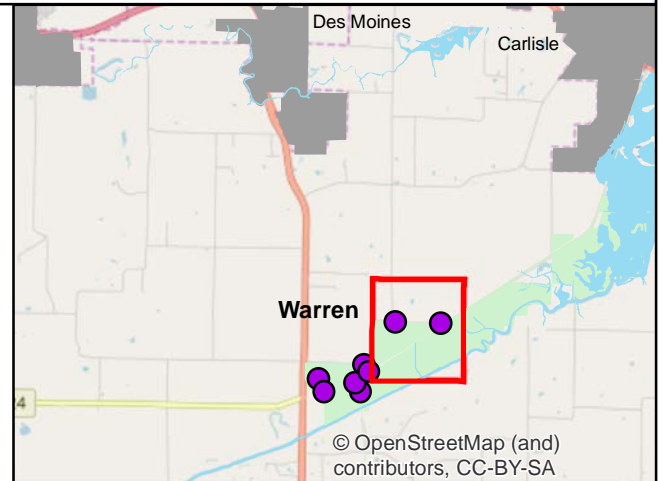
Route ID: 43 County: Warren

Click for Google Maps to Site 1: <https://www.google.com/maps/dir/?api=1&destination=41.4431182409,-93.5551623419>



Legend

----- Trails





Frog and Toad Call Survey Route Description

Route ID **43**

Established: 1991

Site Number	Name	County	Latitude	Longitude	Directions
1	Banner wetland across road from north boatramp	Warren	41.4431182	-93.5551623	
2	Banner wooded wetland	Warren	41.4411347	-93.5461436	
3	Banner Pit north of Summerset Trail entrance	Warren	41.4425971	-93.5473769	
4	Banner County Road	Warren	41.4454165	-93.5454613	
5	Road Ditch 2	Warren	41.4524288	-93.5387914	Located along the road ditch near a large wetland.
6	Drainageway	Warren	41.4522577	-93.5290683	Located by a drainageway along the road ditch near bike trail.
7	Banner Shooting Range Wetland	Warren	41.4442779	-93.5443264	
8	Banner Lake just north of south boatramp	Warren	41.4416555	-93.5540246	



Frog and Toad Call Survey Route Description
