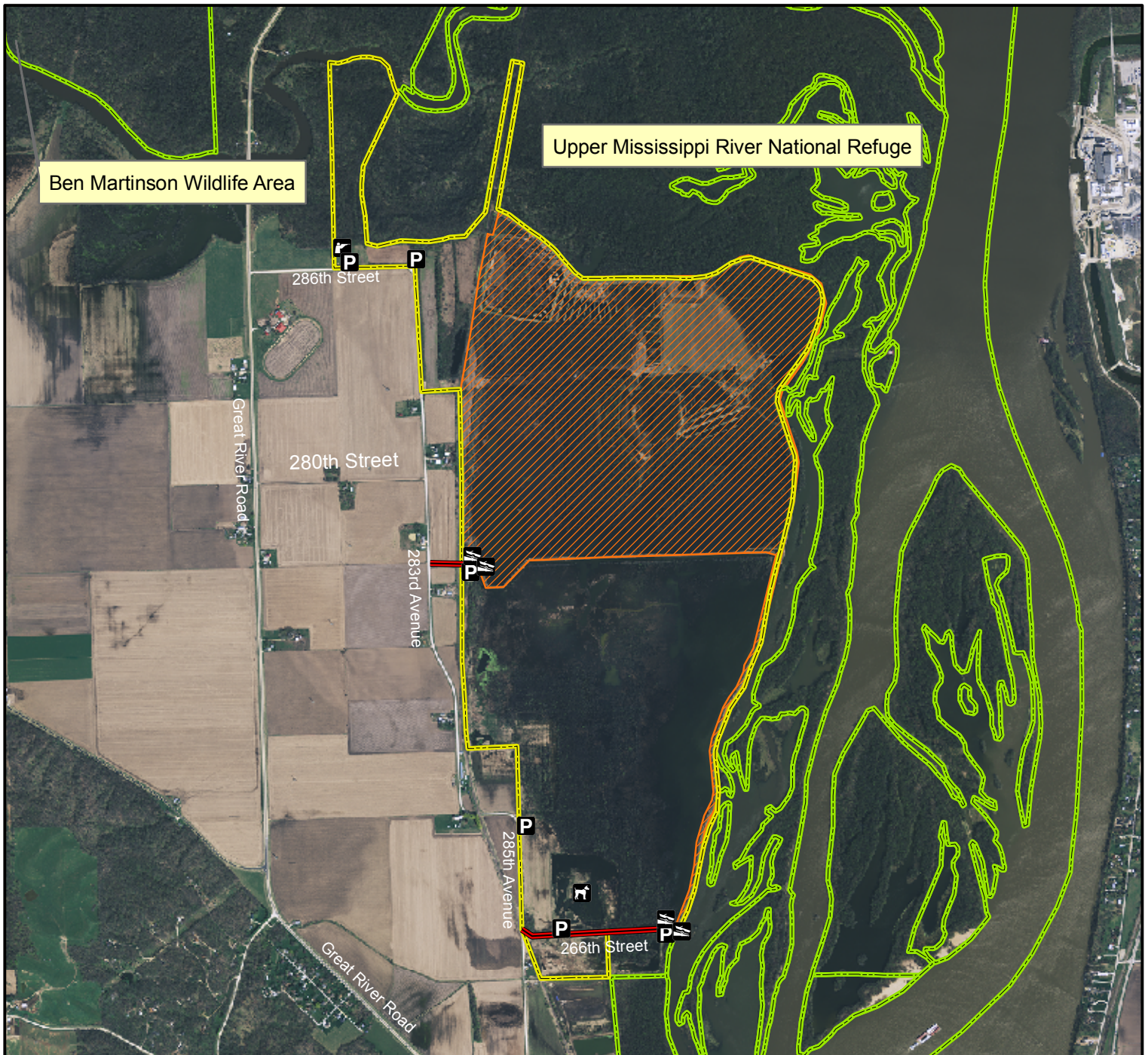


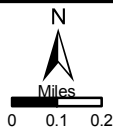
Princeton Wildlife Management Area



Legend

Map Creation Date: 5/2011

- State Areas open to hunting
- WMA Boundary
- Refuge
- Parking Lot
- Boat Ramp
- Dog Trial Area
- Shooting Range
- Access Road
- Other Public Land
- 2010 Aerial Photography



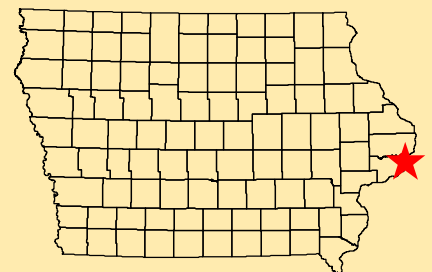
Acres: 1,187

Habitat: 3/4 Wetland, 1/4 Timber & Cropped

Species: Deer, Turkey, Squirrel, Waterfowl

Contact: Curt Kemmerer
Maquoketa Wildlife Unit
563-357-2035

Scott County, Iowa
T-80N, R-05E,
Sections 14,23-26,35-36



Directions: 0.5 mile N of Princeton on Hwy 67, 1 mile N on 285th Ave, E on 266th St.

Every effort has been made to accurately depict the boundaries on this map. However, users should rely on boundary signs actually located in this area to ensure they do not trespass on private property.