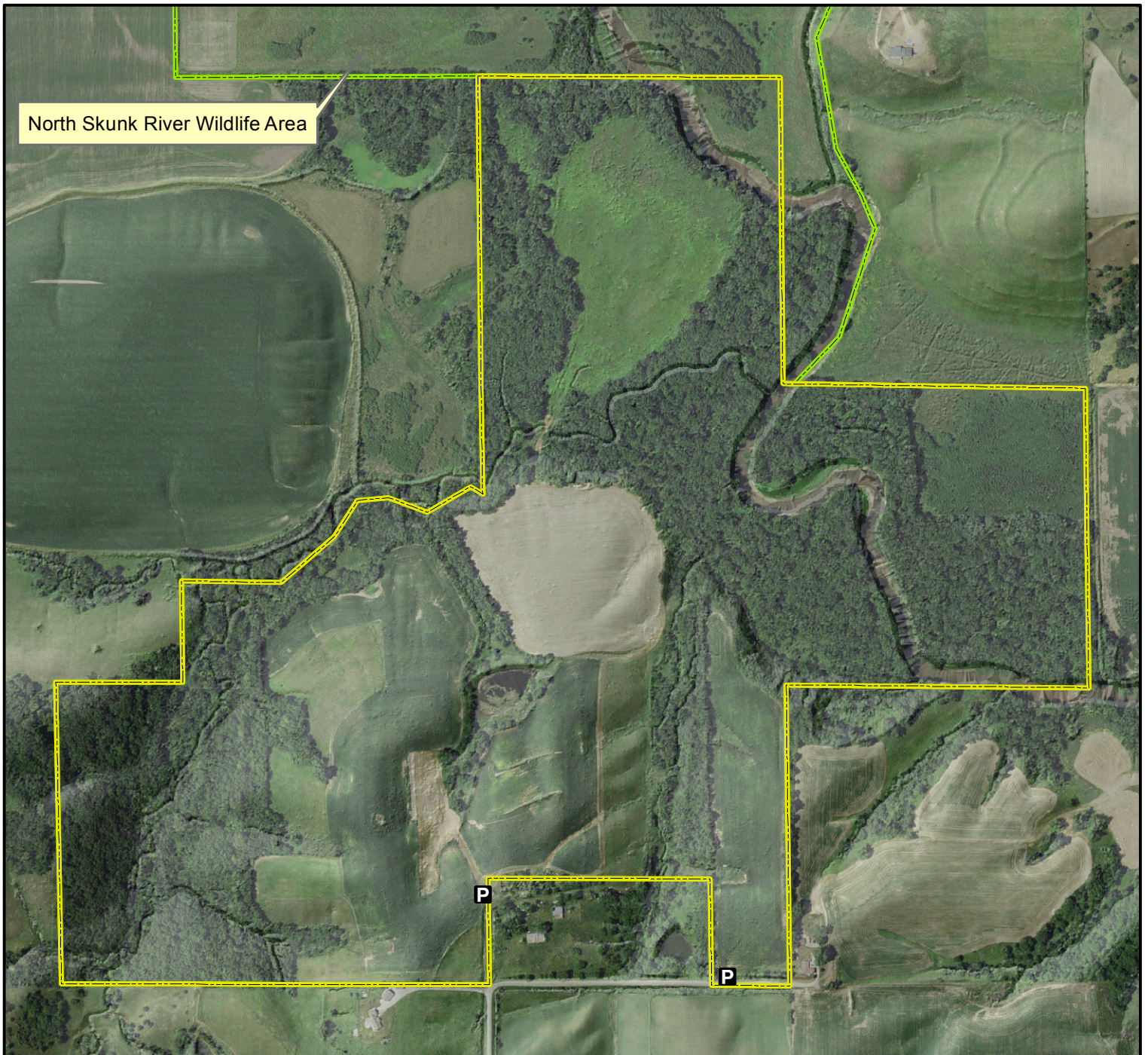




Willie J. Suchy Wildlife Management Area



Legend

- State Areas open to hunting
-  WMA Boundary
-  Parking Lot
- 2017 Aerial Photography

Map Creation Date: 10/2018



N



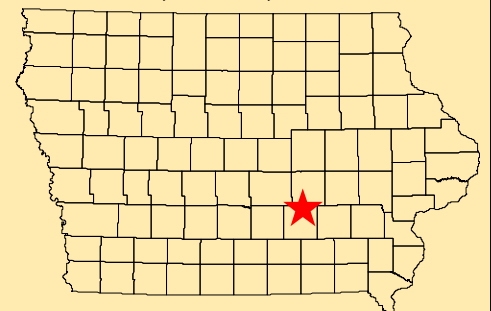
Acres: 225

Habitat: Upland, Forest

Species: Deer, Turkey, Pheasant

Contact: Sugema Wildlife Unit
319-293-7185

Mahaska County, Iowa
T-77N, R-15W, Section 7



Directions: 0.5 mile E of New Sharon on Hwy 63,
1 mile N on Maize Dr.