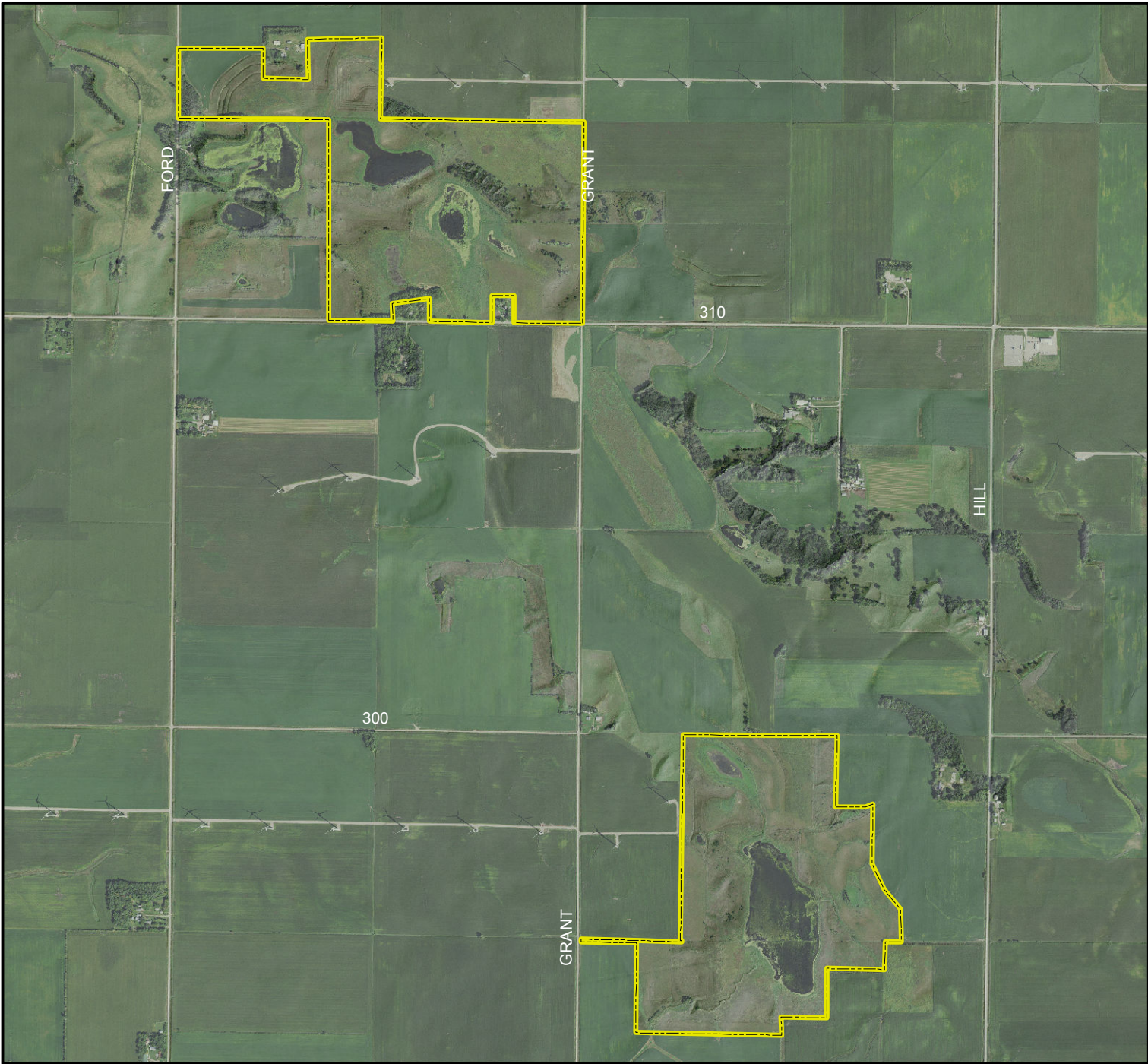



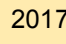
Lake George Wildlife Management Area





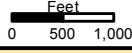

Legend

State Areas open to hunting

 WMA Boundary

 2017 Aerial Photography

Map Creation Date: 8/2018

Acres: 459

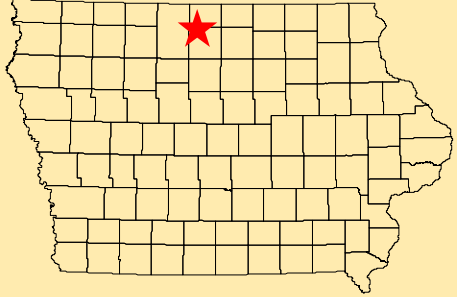
Habitat: 1/3 Wetland, 2/3 Upland

Species: Deer, Turkey, Pheasant, Waterfowl

Contact: TJ Herrick
Clear Lake Wildlife Unit
641-829-3285

Restrictions: Non-Toxic Shot

Hancock County, Iowa
T-97N, R-25,26W, Section 13, 30



Directions: 1.5 miles E of Woden on R35,
S on Ford Ave

Every effort has been made to accurately depict the boundaries on this map. However, users should rely on boundary signs actually located in this area to ensure they do not trespass on private property.