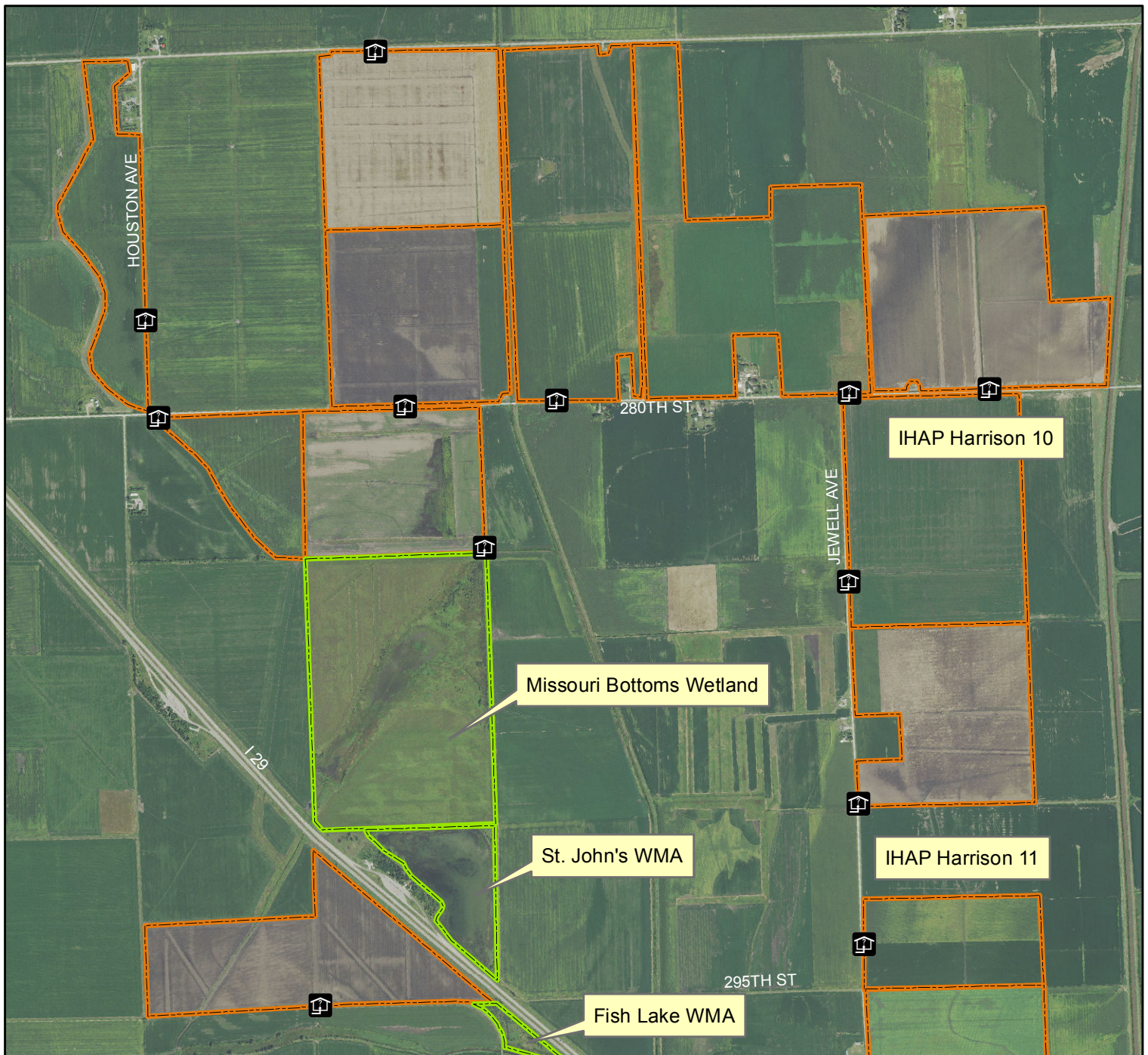



IHAP - Harrison County 9



Legend

- IHAP Areas open to hunting
- IHAP Enrolled Land
- Drop Box Location
- Other Public Land
- 2015 Aerial Photography



Map Creation Date: 8/2017

N
Feet
0 500 1,000

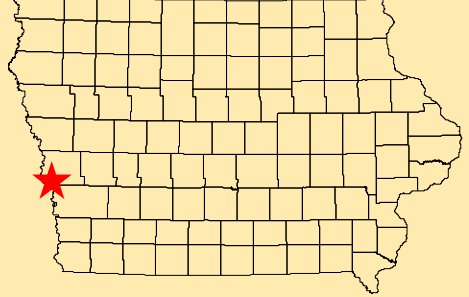
**WALK-IN HUNTING ONLY FROM
SEPT. 1 - MAY 31
ALL OTHER ACTIVITIES PROHIBITED
PLEASE RESPECT PRIVATE PROPERTY**

Acres: 1,175

Habitat: Mixed

Species: Pheasant, Waterfowl

Harrison County, Iowa
T-78,79N, R44W, Sections 6,34-36



Directions: 2.75 miles N of Missouri Valley
on Loess Hills Trail, 2.25 miles
W on 280th St

Every effort has been made to accurately depict the boundaries on this map. However, users should rely on boundary signs actually located in this area to ensure they do not trespass on private property.