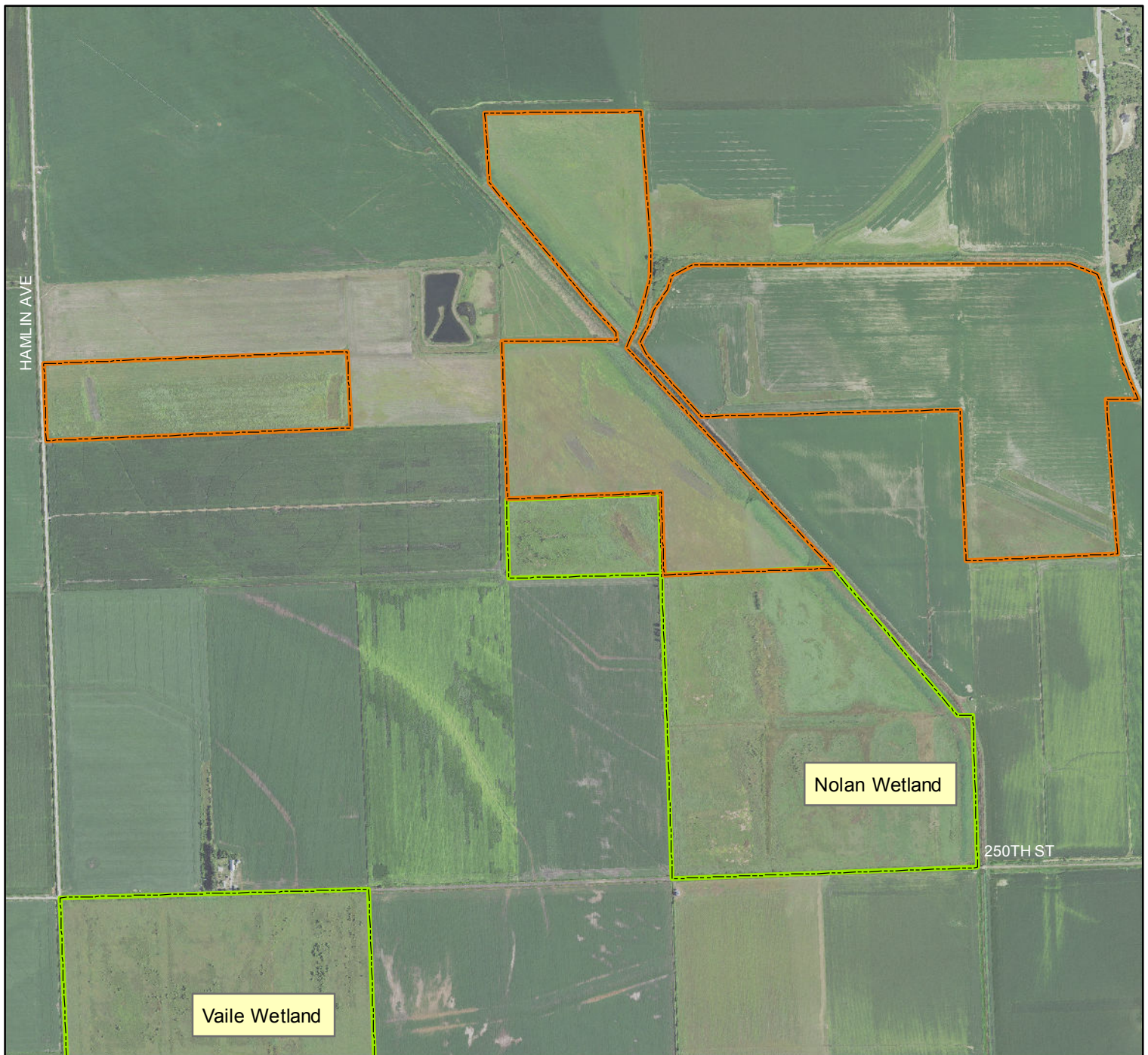





IHAP - Harrison County 6




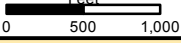
Legend

- IHAP Areas open to hunting
-  IHAP Enrolled Land
-  Other Public Land

2017 Aerial Photography



Map Creation Date: 8/2019

N

 Feet

 0 500 1,000

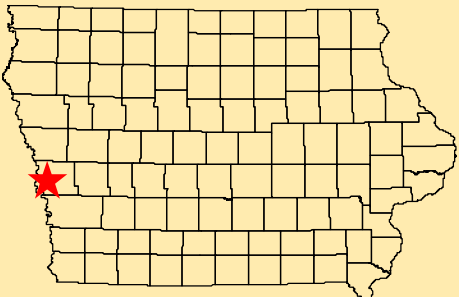
**WALK-IN HUNTING ONLY FROM
 SEPT. 1 - MAY 31
 ALL OTHER ACTIVITIES PROHIBITED
 PLEASE RESPECT PRIVATE PROPERTY**

Acres: 302

Habitat: Grassland

Species: Deer, Pheasant, Quail

Harrison County, Iowa
 T-79N, R44, Sections 10,14-15



*Directions: 1.25 miles E of I29 (Modale Exit)
 on F50 (270th St), 2.75 miles N
 on Hamlin Ave*

Every effort has been made to accurately depict the boundaries on this map. However, users should rely on boundary signs actually located in this area to ensure they do not trespass on private property.