

# Mill Creek Lake

## Obrien County

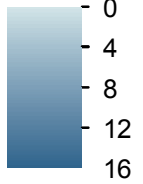
Contour interval is two feet.



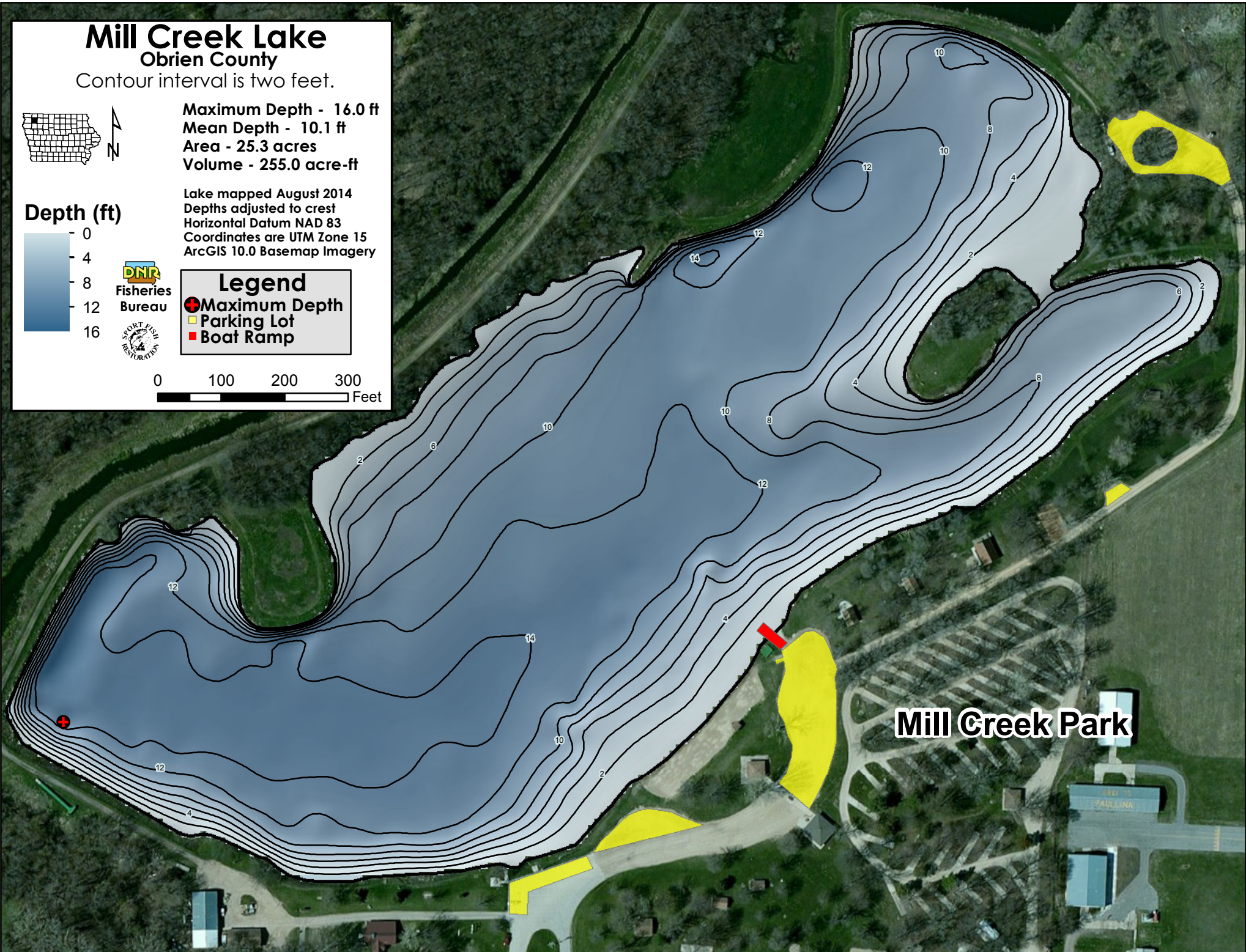
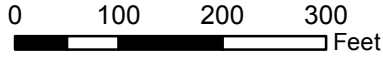
Maximum Depth - 16.0 ft  
Mean Depth - 10.1 ft  
Area - 25.3 acres  
Volume - 255.0 acre-ft

Lake mapped August 2014  
Depths adjusted to crest  
Horizontal Datum NAD 83  
Coordinates are UTM Zone 15  
ArcGIS 10.0 Basemap Imagery

### Depth (ft)



**Legend**  
● Maximum Depth  
■ Parking Lot  
■ Boat Ramp



Mill Creek Park