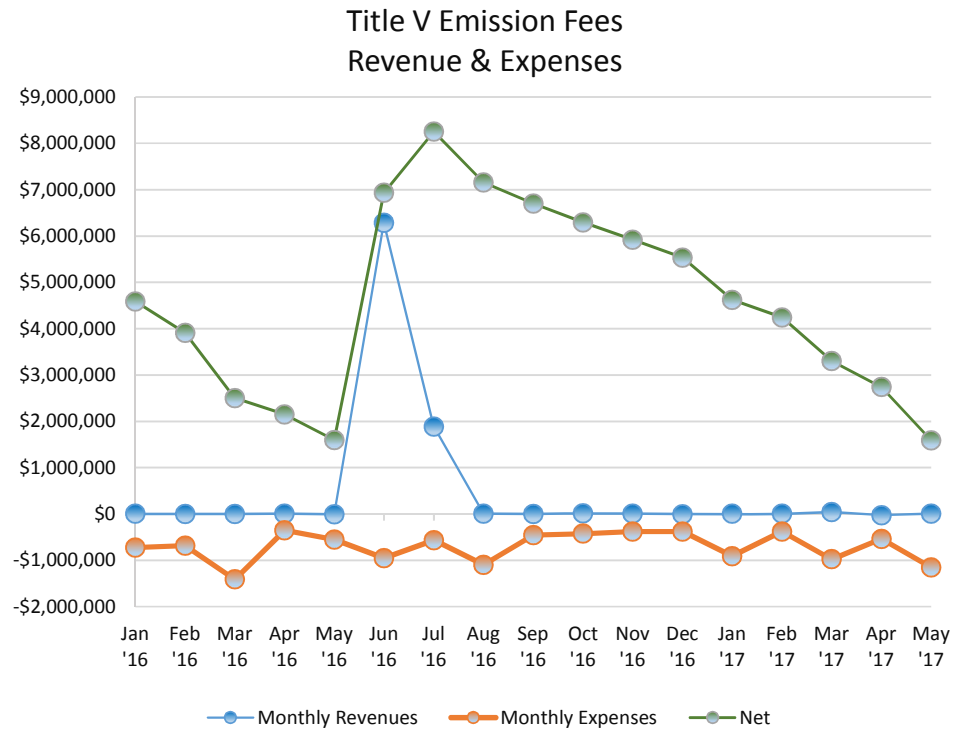


Title V Emissions Fee

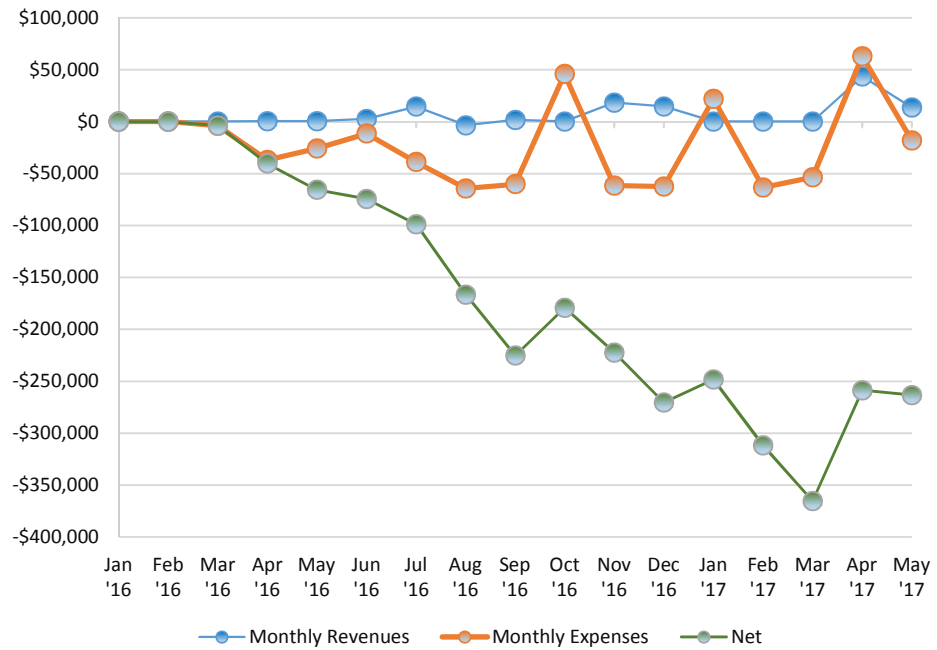
	Revenues	Expenses	Net
2016			
Qtr1			
Jan	\$3,178	-\$725,656	\$4,589,592
Feb	\$2,823	-\$682,283	\$3,910,133
Mar	\$1,888	-\$1,413,165	\$2,498,856
Qtr2			
Apr	\$4,779	-\$352,468	\$2,151,167
May	-\$5,049	-\$549,876	\$1,596,242
Jun	\$6,288,693	-\$951,724	\$6,933,212
Qtr3			
Jul	\$1,884,884	-\$565,805	\$8,252,290
Aug	\$7,398	-\$1,101,657	\$7,158,031
Sep	-\$293	-\$455,573	\$6,702,164
Qtr4			
Oct	\$16,676	-\$425,166	\$6,293,675
Nov	\$7,147	-\$378,930	\$5,921,892
Dec	-\$9,101	-\$381,321	\$5,531,470
2017			
Qtr1			
Jan	\$3,579	-\$913,992	\$4,621,057
Feb	\$3,366	-\$381,958	\$4,242,465
Mar	\$39,342	-\$977,696	\$3,304,112
Qtr2			
Apr	-\$26,240	-\$538,690	\$2,739,182
May	\$5,453	-\$1,153,865	\$1,590,770



Title V Application Fee

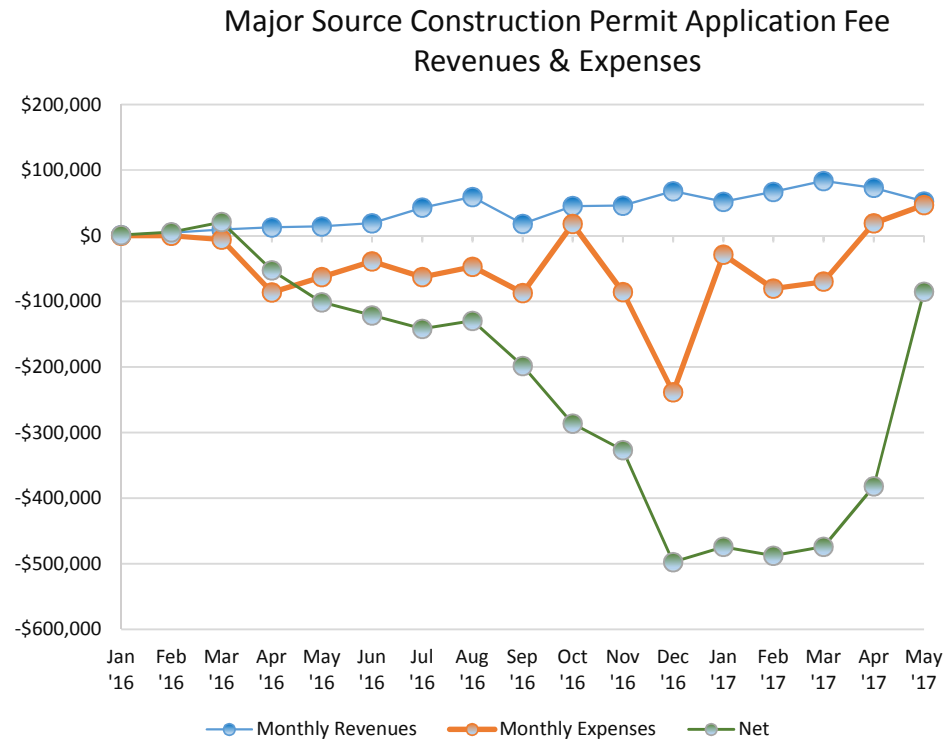
	Revenues	Expenses	Net
2016			
Qtr1			
Jan	\$0	\$0	\$0
Feb	\$0	\$0	\$0
Mar	\$0	-\$3,957	-\$3,957
Qtr2			
Apr	\$325	-\$36,781	-\$40,413
May	\$400	-\$25,682	-\$65,695
Jun	\$2,700	-\$11,450	-\$74,445
Qtr3			
Jul	\$14,464	-\$38,854	-\$98,835
Aug	-\$3,489	-\$64,294	-\$166,617
Sep	\$1,575	-\$60,160	-\$225,202
Qtr4			
Oct	\$0	\$45,885	-\$179,317
Nov	\$18,400	-\$61,605	-\$222,522
Dec	\$14,600	-\$62,490	-\$270,412
2017			
Qtr1			
Jan	\$0	\$22,005	-\$248,407
Feb	\$0	-\$63,353	-\$311,760
Mar	\$0	-\$53,583	-\$365,343
Qtr2			
Apr	\$43,525	\$62,935	-\$258,883
May	\$13,600	-\$18,061	-\$263,344

Title V Application Fee Revenues & Expenses



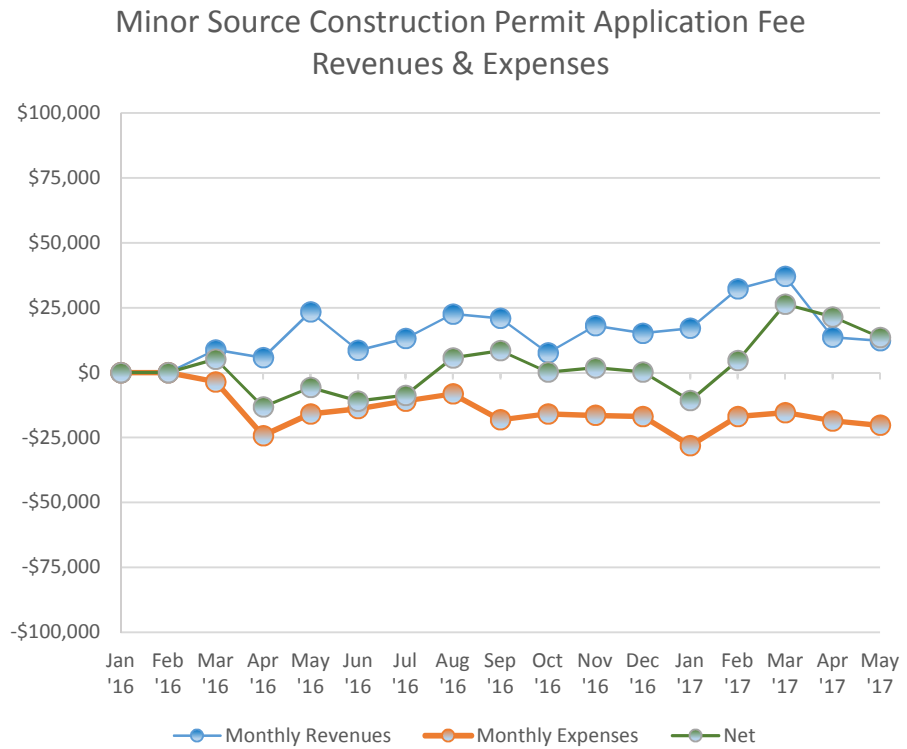
Major Source CP Application Fee

	Revenues	Expenses	Net
2016			
Qtr1			
Jan	\$1,155	\$0	\$1,155
Feb	\$4,250	\$0	\$5,405
Mar	\$9,455	-\$5,968	\$20,828
Qtr2			
Apr	\$12,620	-\$86,206	-\$52,758
May	\$14,076	-\$62,926	-\$101,608
Jun	\$19,216	-\$39,126	-\$121,518
Qtr3			
Jul	\$42,718	-\$63,025	-\$141,825
Aug	\$59,253	-\$47,229	-\$129,801
Sep	\$18,268	-\$87,126	-\$198,660
Qtr4			
Oct	\$45,139	\$18,086	-\$286,486
Nov	\$45,743	-\$85,823	-\$326,566
Dec	\$67,904	-\$87,146	-\$497,400
2017			
Qtr1			
Jan	\$51,818	-\$28,741	-\$474,323
Feb	\$67,041	-\$80,559	-\$487,840
Mar	\$83,575	-\$69,945	-\$474,211
Qtr2			
Apr	\$72,967	\$19,231	-\$382,012
May	\$52,152	\$46,711	-\$85,324



Minor Source CP Application Fee

	Revenues	Expenses	Net
2016			
Qtr1			
Jan	\$0	\$0	\$0
Feb	\$0	\$0	\$0
Mar	\$8,786	-\$3,569	\$5,217
Qtr2			
Apr	\$5,790	-\$24,232	-\$13,225
May	\$23,405	-\$15,881	-\$5,701
Jun	\$8,574	-\$13,812	-\$10,939
Qtr3			
Jul	\$13,159	-\$10,958	-\$8,738
Aug	\$22,580	-\$8,139	\$5,702
Sep	\$20,944	-\$18,141	\$8,505
Qtr4			
Oct	\$7,636	-\$15,894	\$197
Nov	\$18,113	-\$16,412	\$1,898
Dec	\$15,215	-\$16,845	\$268
2017			
Qtr1			
Jan	\$17,091	-\$28,122	-\$10,763
Feb	\$32,255	-\$16,829	\$4,663
Mar	\$37,075	-\$15,354	\$26,384
Qtr2			
Apr	\$13,675	-\$18,550	\$21,509
May	\$12,320	-\$20,228	\$13,601



Asbestos Notification Fee

	Revenues	Expenses	Net
2016			
Qtr1			
Jan	\$2,105	-\$4,283	-\$40,652
Feb	\$14,200	-\$58,081	-\$84,533
Mar	\$18,800	-\$6,854	-\$72,587
Qtr2			
Apr	\$20,400	-\$28,945	-\$81,132
May	\$10,800	\$42,600	-\$27,732
Jun	\$23,400	\$7,085	\$2,753
Qtr3			
Jul	\$11,125	-\$8,660	\$5,283
Aug	\$15,728	-\$15,733	\$5,213
Sep	\$23,035	-\$17,370	\$10,878
Qtr4			
Oct	\$14,700	-\$32,692	-\$7,005
Nov	\$11,383	-\$19,209	-\$14,830
Dec	\$11,430	-\$19,958	-\$23,358
2017			
Qtr1			
Jan	\$11,845	-\$40,487	-\$52,001
Feb	\$15,040	-\$23,130	-\$60,091
Mar	\$19,155	-\$15,187	-\$56,123
Qtr2			
Apr	\$23,255	\$16,917	-\$15,951
May	\$21,285	-\$10,380	-\$5,046

