

# Iowa Ozone Monitoring Locations and Design Values for Ozone 2018-2020

A design value is a tool that can be used to understand pollution levels at a specific location. A design value may be set for any pollutant. The U.S. EPA's official definition is explained this way: "a design value is the mathematically determined pollutant concentration at a particular site that must be reduced to, or maintained at or below the National Ambient Air Quality Standard to assume attainment." The design value number tells us how a particular site or area compares with the National Ambient Air Quality Standards (NAAQS).

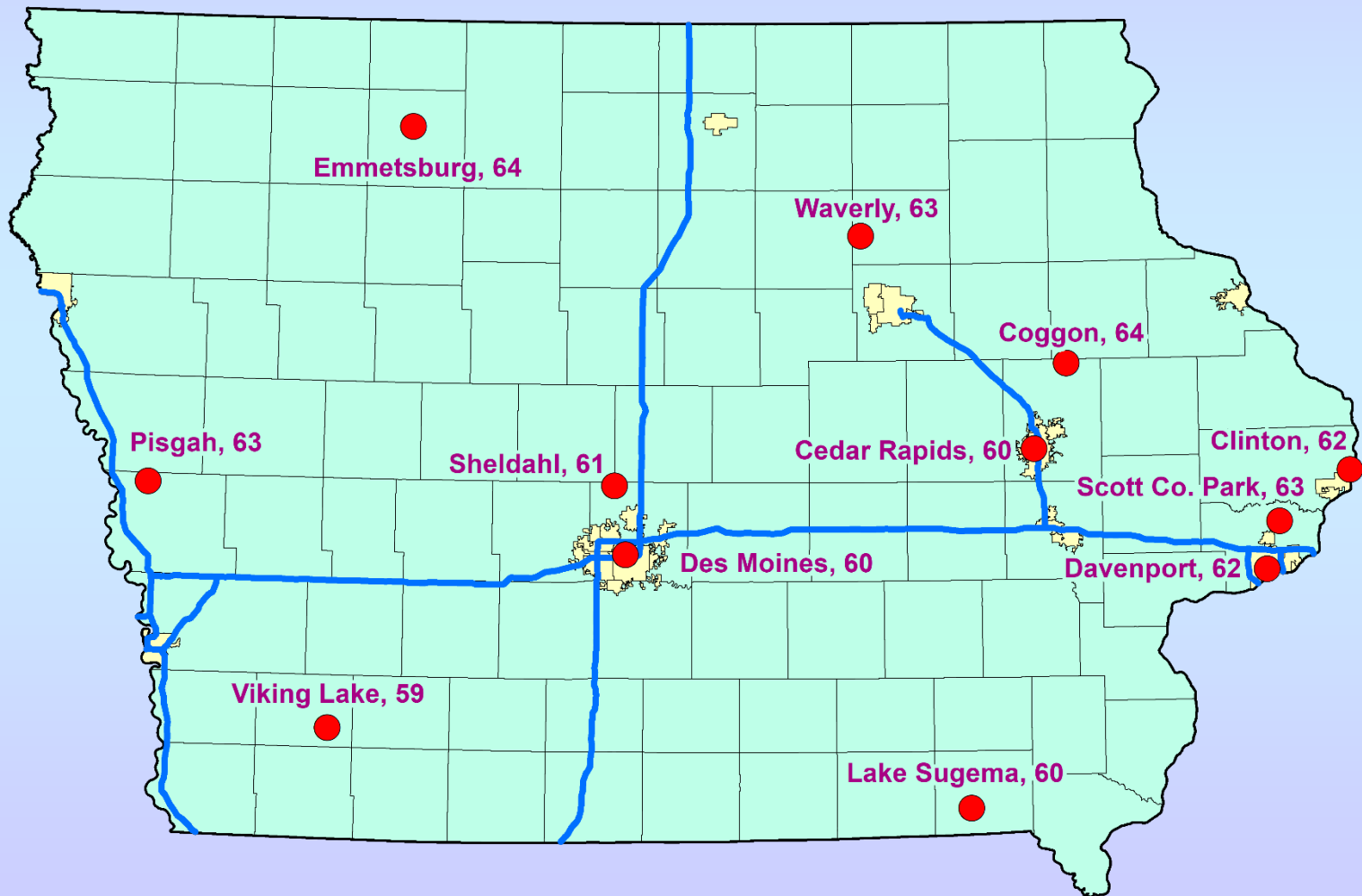
Iowa ozone monitor location and information is detailed on the following pages. The EPA design value for 8-hour ozone is equal to the average of the 4th highest annual daily maximum 8-hour value for the most recent three years. EPA promulgated new lower ozone standards on October 1, 2015. A monitoring site must have a design value less than 71 parts per billion to be considered "in attainment" with the ozone NAAQS. All monitoring sites in Iowa are in attainment with the 8-hour ozone NAAQS. Additional information on the revised ozone standard is available here: [2015 National Ambient Air Quality Standards \(NAAQS\) for Ozone](#)

## Iowa Ozone Monitors (2020)

<b>AQS Site ID</b>	<b>Site Name</b>	<b>Location</b>	<b>County</b>
19-017-0011	Waverly, Airport	Waverly	Bremer
19-045-0021	Clinton, Rainbow Park	Clinton	Clinton
19-085-0007	Pisgah, Forestry Office	Pisgah	Harrison
19-113-0033	Coggon Elementary School	Coggon	Linn
19-113-0040	Cedar Rapids, Public Health	Cedar Rapids	Linn
19-137-0002	Viking Lake State Park	Red Oak	Montgomery
19-147-1002	Emmetsburg, Iowa Lakes CC	Emmetsburg	Palo Alto
19-153-0030	Des Moines, Health Dept.	Des Moines	Polk
19-153-1579	Sheldahl	Sheldahl	Polk
19-163-0014	Scott County Park	Davenport	Scott
19-163-0015	Davenport, Jefferson School	Davenport	Scott
19-177-0006	Lake Sugema	Lake Sugema	Van Buren

# Iowa Ozone Design Values: 2018-2020

Values in ppb, values greater than 70 exceed the standard



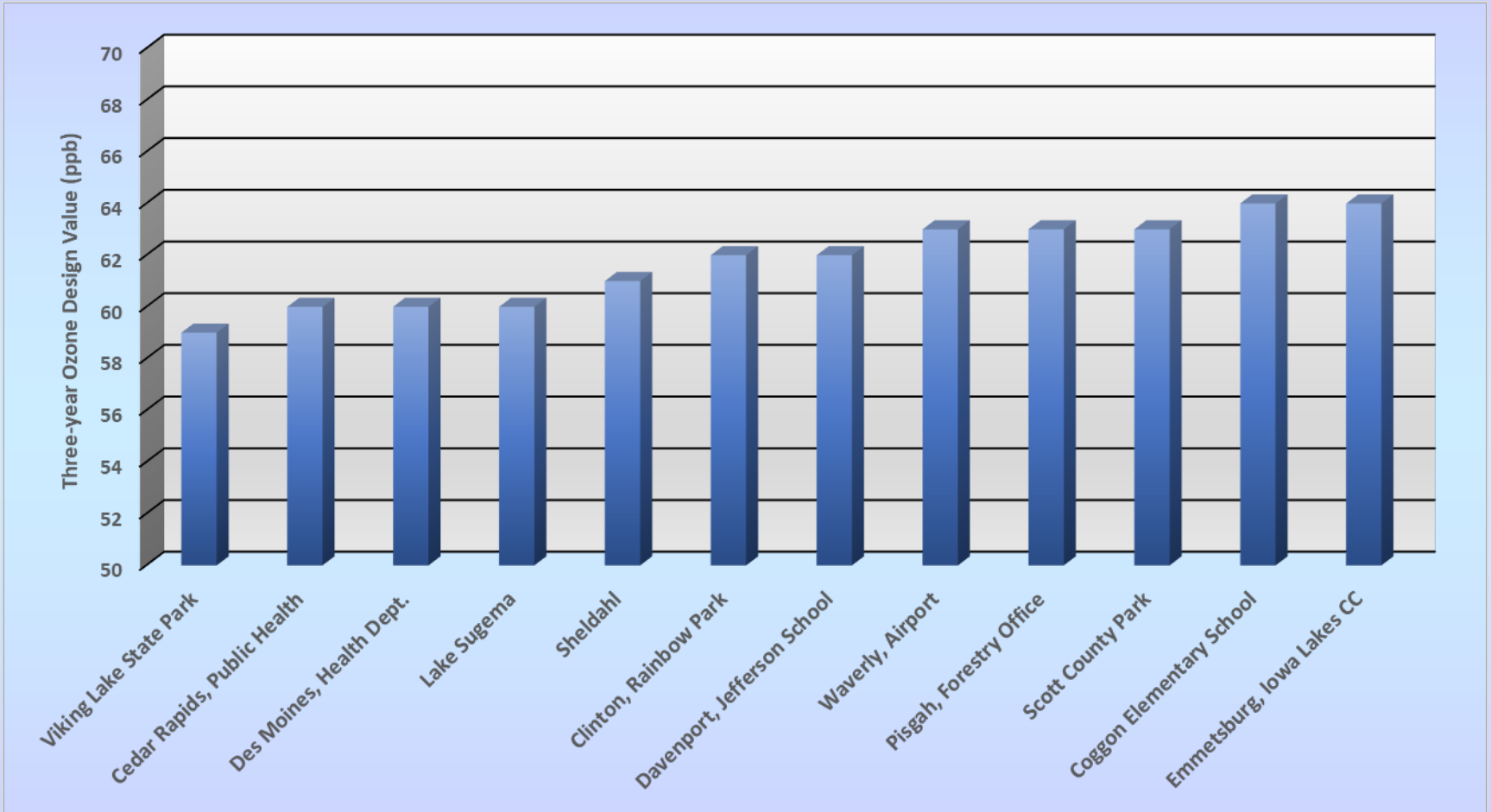
# Iowa Ozone Design Values 2020\*\*

Iowa Ozone Design Values 2020**						
County	City	EPA Site Id	Year	4th Highest Daily Maximum 8hr Ozone Concentration (ppb)	3-year Average (ppb) of 4th Highest	Years Averaged
Bremer	Waverly	19-017-0011	2018	68		
			2019	61		
			2020	60	63	2018-2020
Clinton	Clinton	19-045-0021	2018	67		
			2019	58		
			2020	62	62	2018-2020
Harrison	Pisgah	19-085-0007	2018	66		
			2019	62		
			2020	61	63	2018-2020
Linn	Coggon	19-113-0033	2018	70		
			2019	58		
			2020	64	64	2018-2020
Linn	Cedar Rapids	19-113-0040	2018	67		
			2019	56		
			2020	59	60	2018-2020
Montgomery	Red Oak (Viking Lake)	19-137-0002	2018	64		
			2019	59		
			2020	56	59	2018-2020
Palo Alto	Emmetsburg	19-147-1002	2018	67		
			2019	65		
			2020	62	64	2018-2020

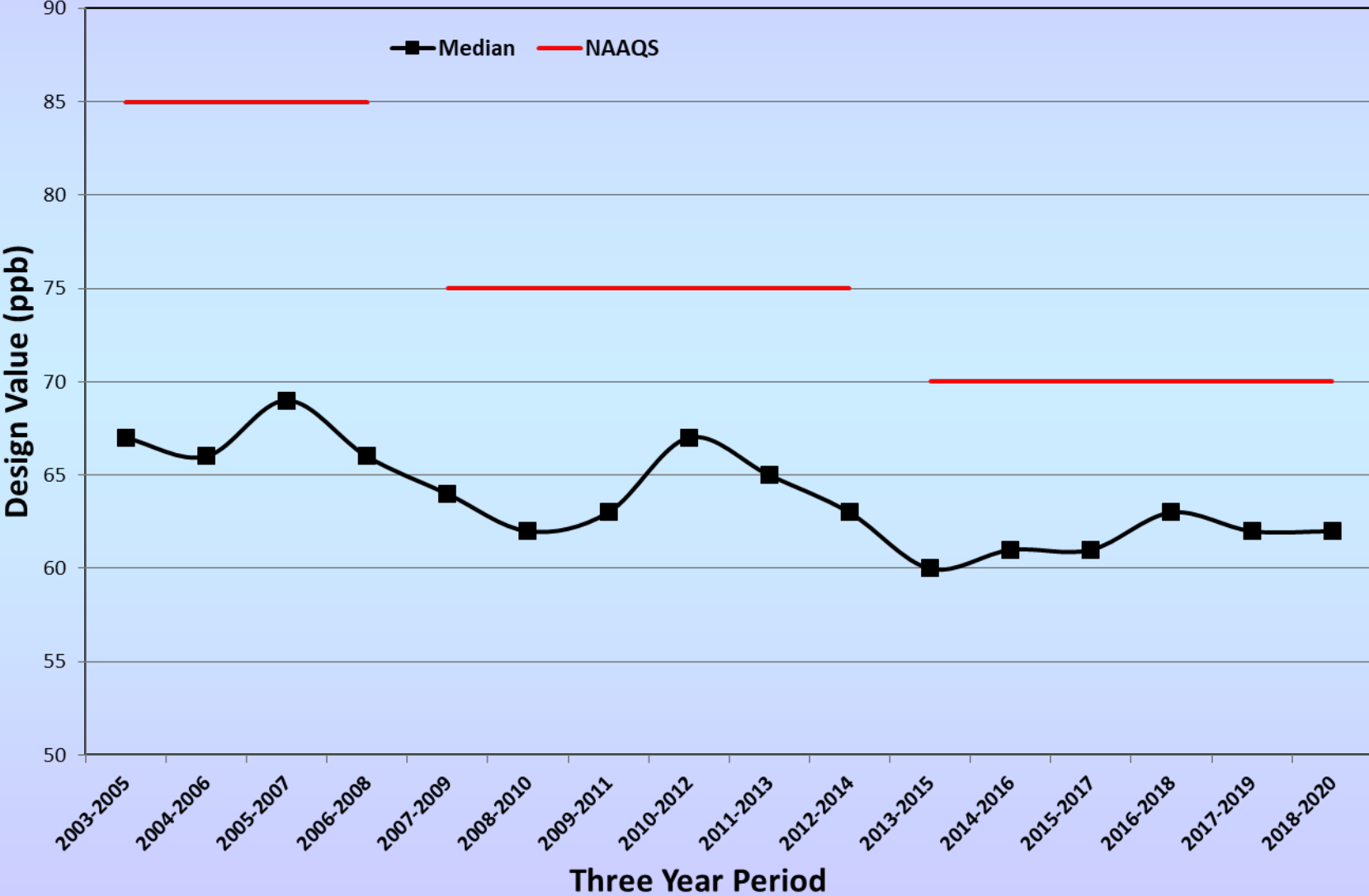
# Iowa Ozone Design Values 2020\*\* Continued

<b>Iowa Ozone Design Values 2020** (continued)</b>						
<b>County</b>	<b>City</b>	<b>EPA Site Id</b>	<b>Year</b>	<b>4th Highest Daily Maximum 8hr Ozone Concentration (ppb)</b>	<b>3-year Average (ppb) of 4th Highest</b>	<b>Years Averaged</b>
<b>Polk</b>	<b>Des Moines</b>	<b>19-153-0030</b>	2018	65		
			2019	59		
			2020	57	<b>60</b>	<b>2018-2020</b>
<b>Polk</b>	<b>Sheldahl</b>	<b>19-153-1579</b>	2018	65		
			2019	63		
			2020	56	<b>61</b>	<b>2018-2020</b>
<b>Scott</b>	<b>Davenport</b>	<b>19-163-0014</b>	2018	71		
			2019	58		
			2020	60	<b>63</b>	<b>2018-2020</b>
<b>Scott</b>	<b>Davenport</b>	<b>19-163-0015</b>	2018	65		
			2019	61		
			2020	61	<b>62</b>	<b>2018-2020</b>
<b>Van Buren</b>	<b>Keosauqua (Lake Sugema)</b>	<b>19-177-0006</b>	2018	63		
			2019	61		
			2020	57	<b>60</b>	<b>2018-2020</b>
<b>(Three Year Averages Greater Than 70 ppb Indicate Non-Attainment with the NAAQS)</b>						
<b>**Values considered preliminary until data is certified in May 2021.</b>						

# Iowa Ozone Design Values Chart: 2018-2020



# Median Ozone Design Values in Iowa Ozone Monitoring Network



# Web Resources

## **Iowa Real-time Data Reporting :**

### ***In Polk County:***

<https://www.polkcountyiowa.gov/public-works/air-quality/air-quality-monitoring/current-aqi-real-time-data/>

### ***In Linn County:***

<http://www.linncleanair.org/Default.aspx>

### ***Outside Polk and Linn Counties:***

<http://www.shl.uiowa.edu/env/ambient/index.xml>

### ***Design Values for All Pollutants Nationwide:***

<http://www.epa.gov/airtrends/values.html>

### ***Ozone Maps:***

<https://airnow.gov/>

### **Historical Air Pollution Data for Iowa and Other States:**

<http://www.epa.gov/airdata/>