

Prioritizing Protections from Asbestos Exposure

- Inspections and enforcement at hospitals, schools, and community projects take priority due to the possibility of asbestos exposure of young children and a greater number of people
- Responding to complaints also consumes a lot of time each year. Many are valid and enhance compliance with the asbestos regulations

Activity	Number
Notifications Submitted	5,188
Asbestos Inspections	81
Outreach Visits	26
Complaint Investigations	92
Referrals to Legal	2

Process Efficiencies/Improvements

Collaborated with Industry to address stack testing issues

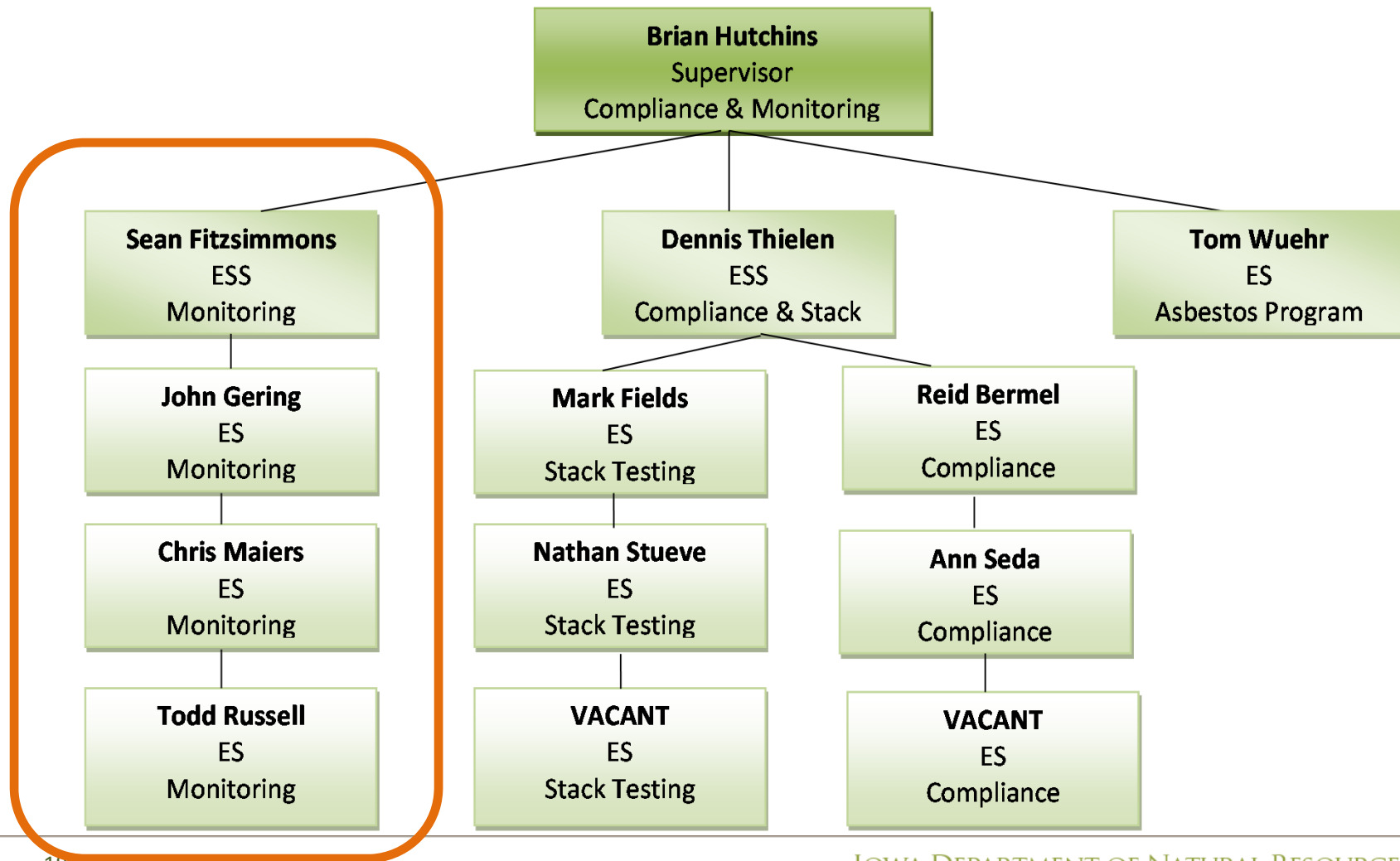
- Standardized stack test requirements by adopting federal test methods and eliminating conflicting Iowa Compliance Sampling Manual
- Petitioned EPA for flexibility on revised Methods 201A and 202
 - Provides option for some sources that want to simplify and reduce the cost of testing (Method 202)
- Shortened the duration of particulate tests that resulted in time and resource savings

New Asbestos Tracking Database

- Faster and more accurate data entry
- New reporting functions to help track projects and identify priorities

Ambient Monitoring Services

Compliance & Ambient Air Monitoring Section



Ambient Air Monitoring Services

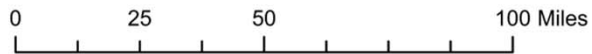
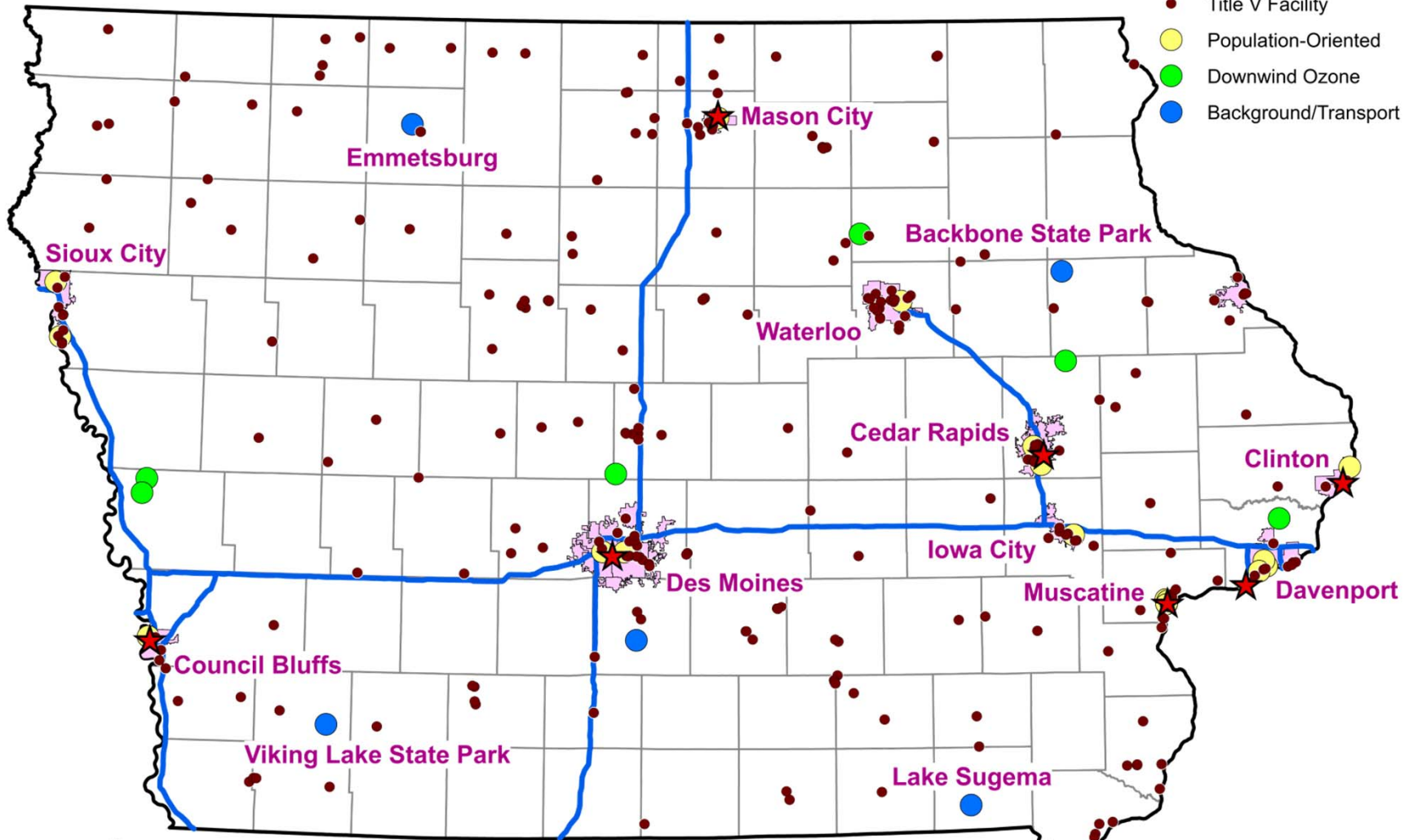
- Assure all Iowa citizens have clean air and meet the National Ambient Air Quality Standards (NAAQS)

- Monitor Purposes
 - Population centers
 - Background to expedite permitting
 - Characterize interstate transport
 - Compliance and areas of industry concentration

2013 Monitoring Site Locations (38)

Legend

- ★ Near-Source
- Title V Facility
- Population-Oriented
- Downwind Ozone
- Background/Transport



Ambient Air Monitoring Partners

- State Hygienic Laboratory at the University of Iowa
- Polk County Public Works - Air Quality Division
- Linn County Public Health - Air Quality Section
- Industry

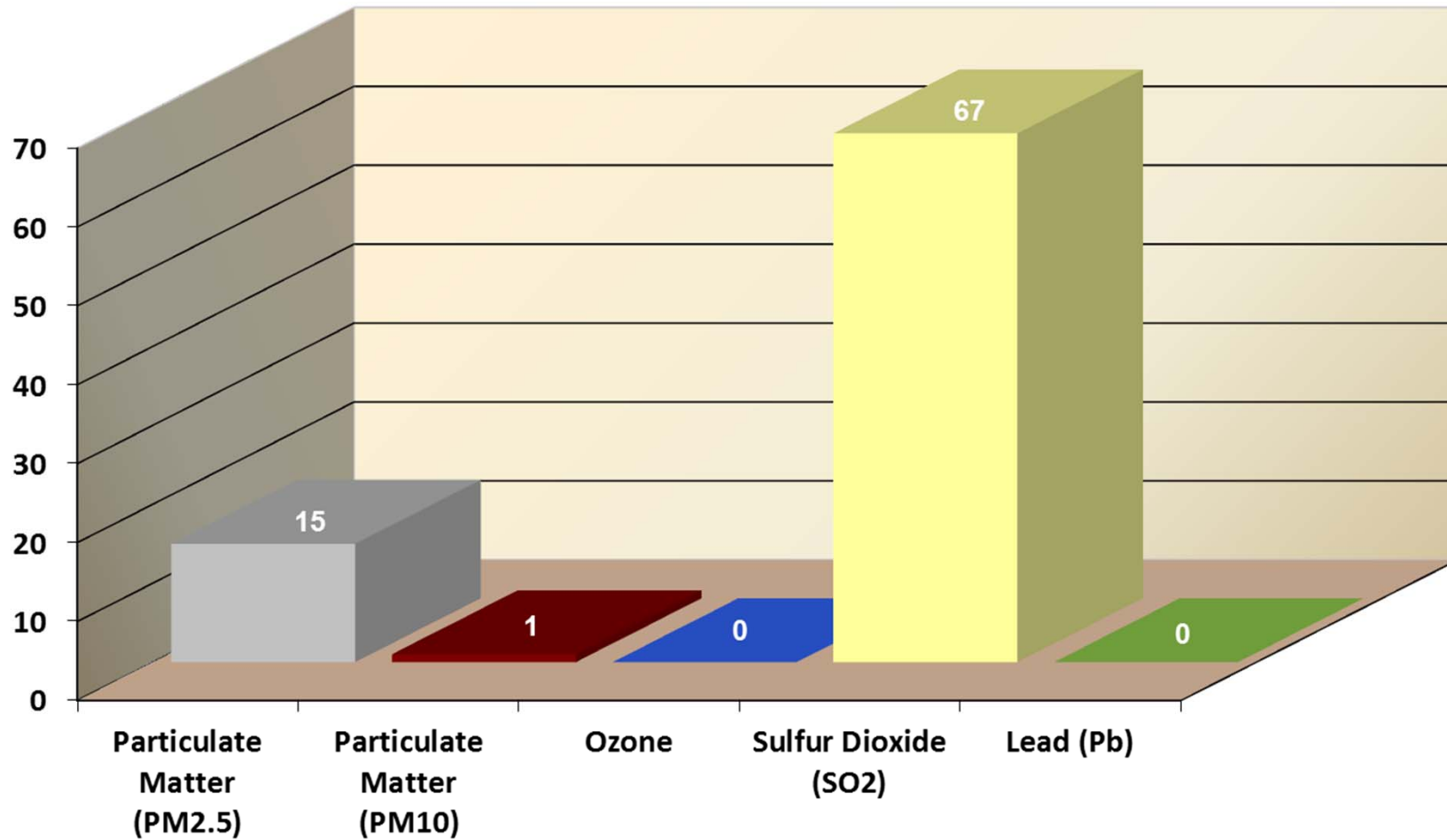
Monitoring Unit Activities

- Development of SHL and Local Program monitoring contracts
- Contract implementation and oversight
- Work with our partners on Quality Assurance to ensure data is valid for environmental decision making
- Annual data review and certification by May 1st

Annual Network Plan and Data Reports

- Develop Ambient Air Monitoring Network Plan and submit to EPA by July 1st
 - Annual review of monitoring needs and verify network meets EPA requirements
 - Inform public of plans for network changes
 - Plan is available for 30-day public input by June 1st
- Develop Criteria Pollutant Report
 - Review location and summary data for each monitor
- Report on Air Toxic Monitoring activities
 - Establish long term trends in air toxic concentrations
- Maintain exceedance report to track number of exceedances, locations, and dates

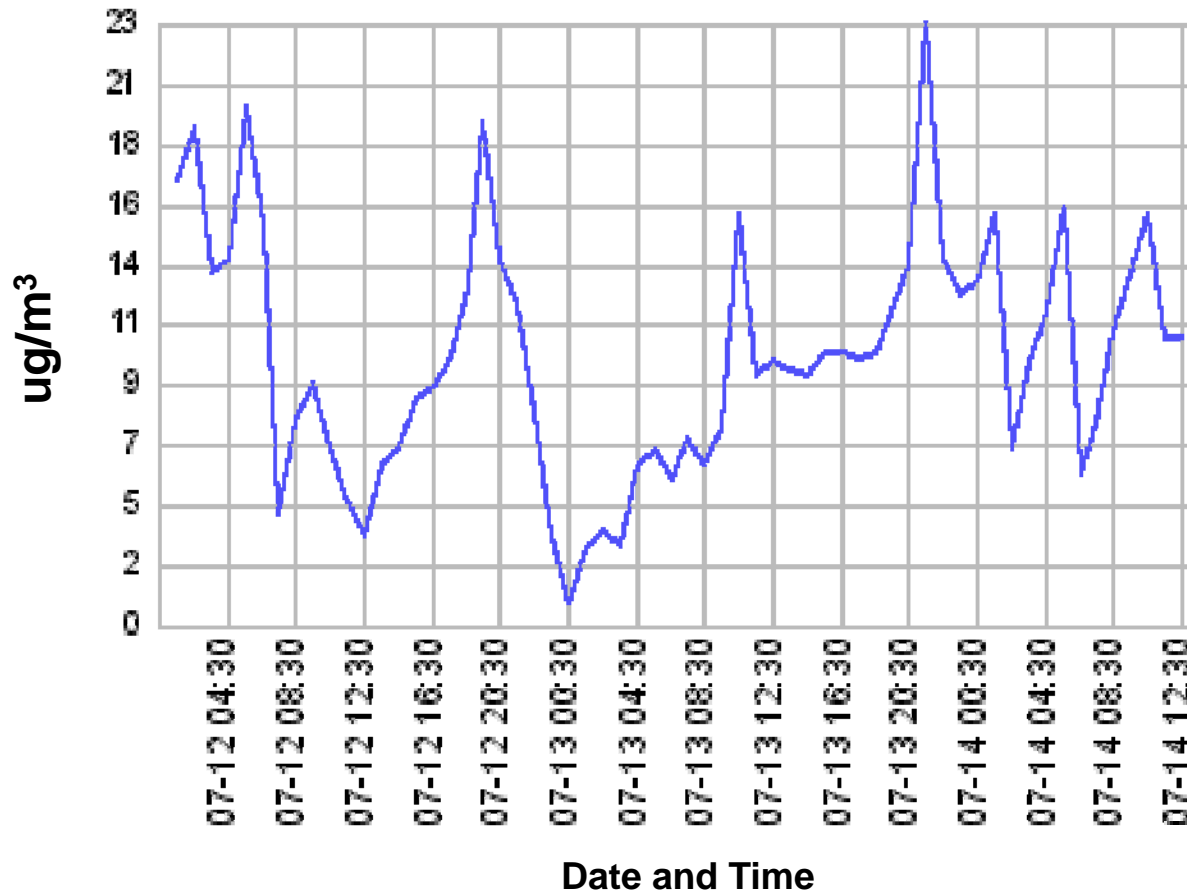
Iowa NAAQS Exceedances, 2013



Public Reporting

- Respond to public data requests and attend public meetings
- Track pollution levels and inform the public of elevated levels during regional pollution events
- Provide real-time data from continuous monitors
 - Data feeds to EPA and Local reporting systems

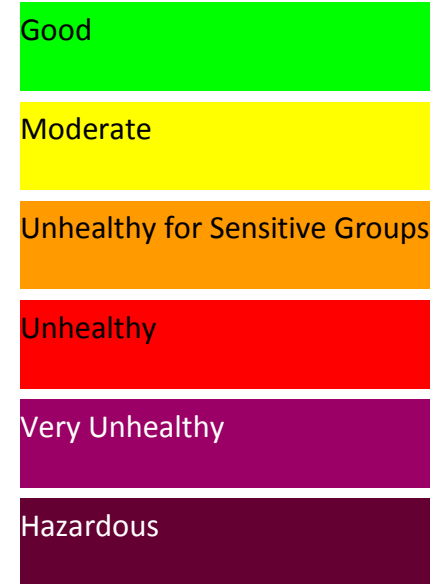
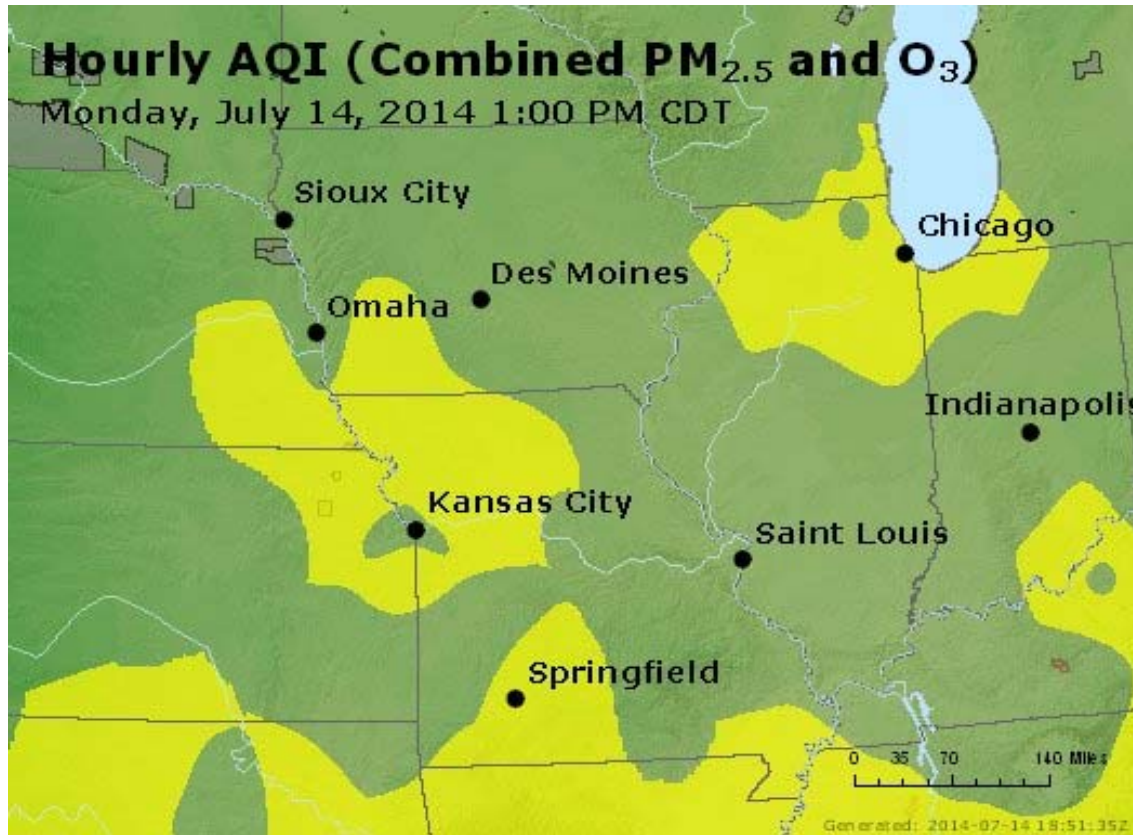
Real-time Monitoring Data (Davenport, Jefferson School)



■ PM2.5

*PM2.5 = 35.5 $\mu\text{g}/\text{m}^3$ over
a 24 hour period*

Air Quality Index (July 14, 2014)



Provided by:
EPA - AIRNow

Links to Data, Reports, and Network Plans

<http://www.iowadnr.gov/InsideDNR/RegulatoryAir/MonitoringAmbientAir.aspx>



Questions?

Compliance and Ambient Air Monitoring

Brian Hutchins

(515) 725-9550

Brian.hutchins@dnr.iowa.gov