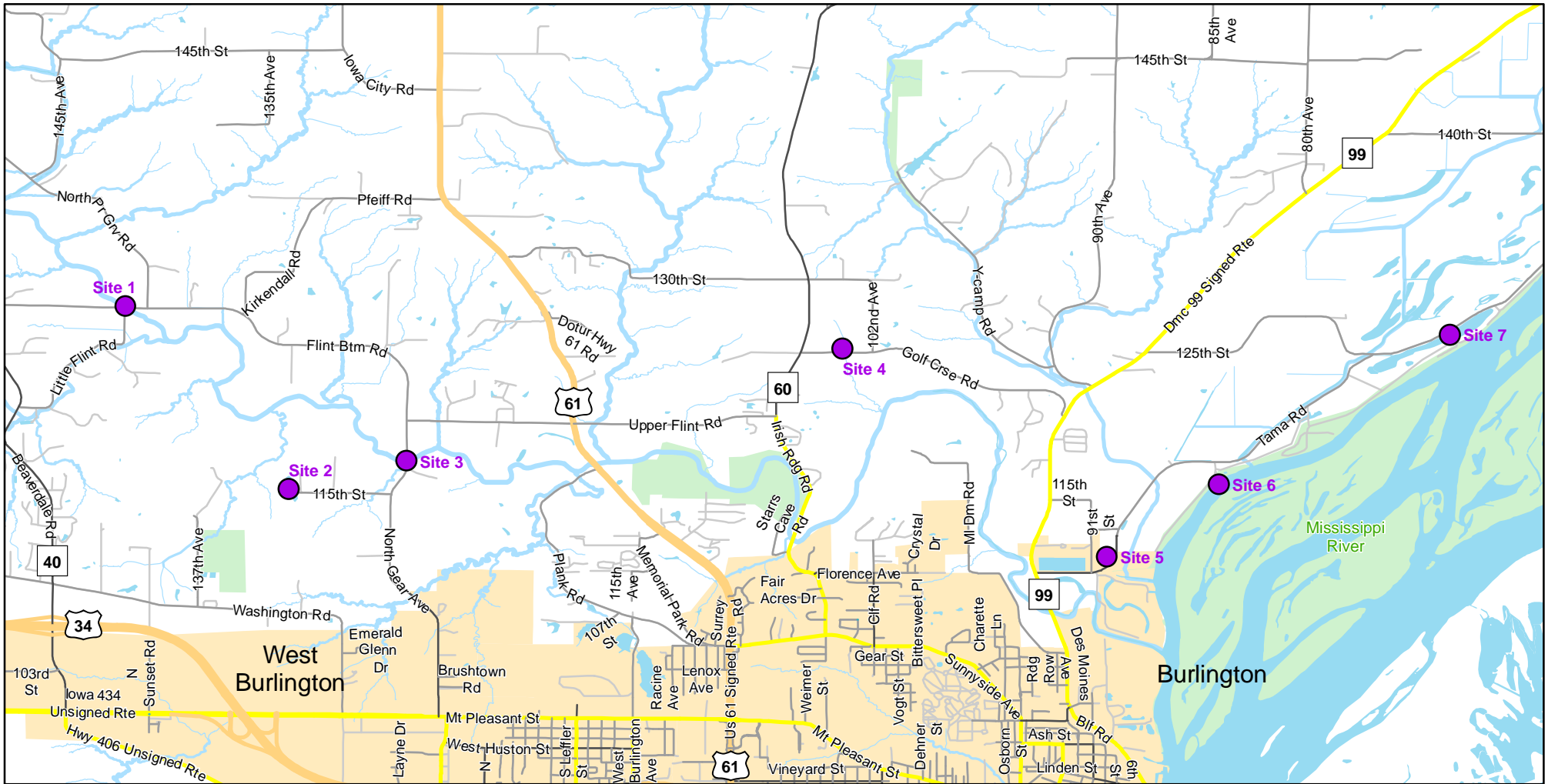




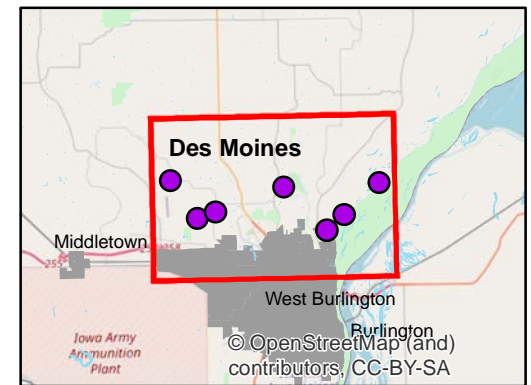
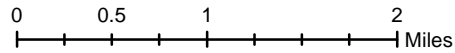
Volunteer Wildlife Monitoring Program (VWMP) Frog

Route ID: 66 County: Des Moines

Click for Google Maps to Site 1: <https://www.google.com/maps/dir/?api=1&destination=40.866754825,-91.2011966087>



Enlarged View of Site 1



© OpenStreetMap (and contributors), CC-BY-SA

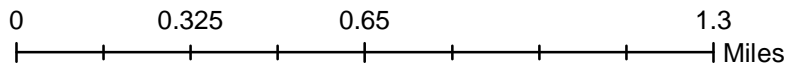
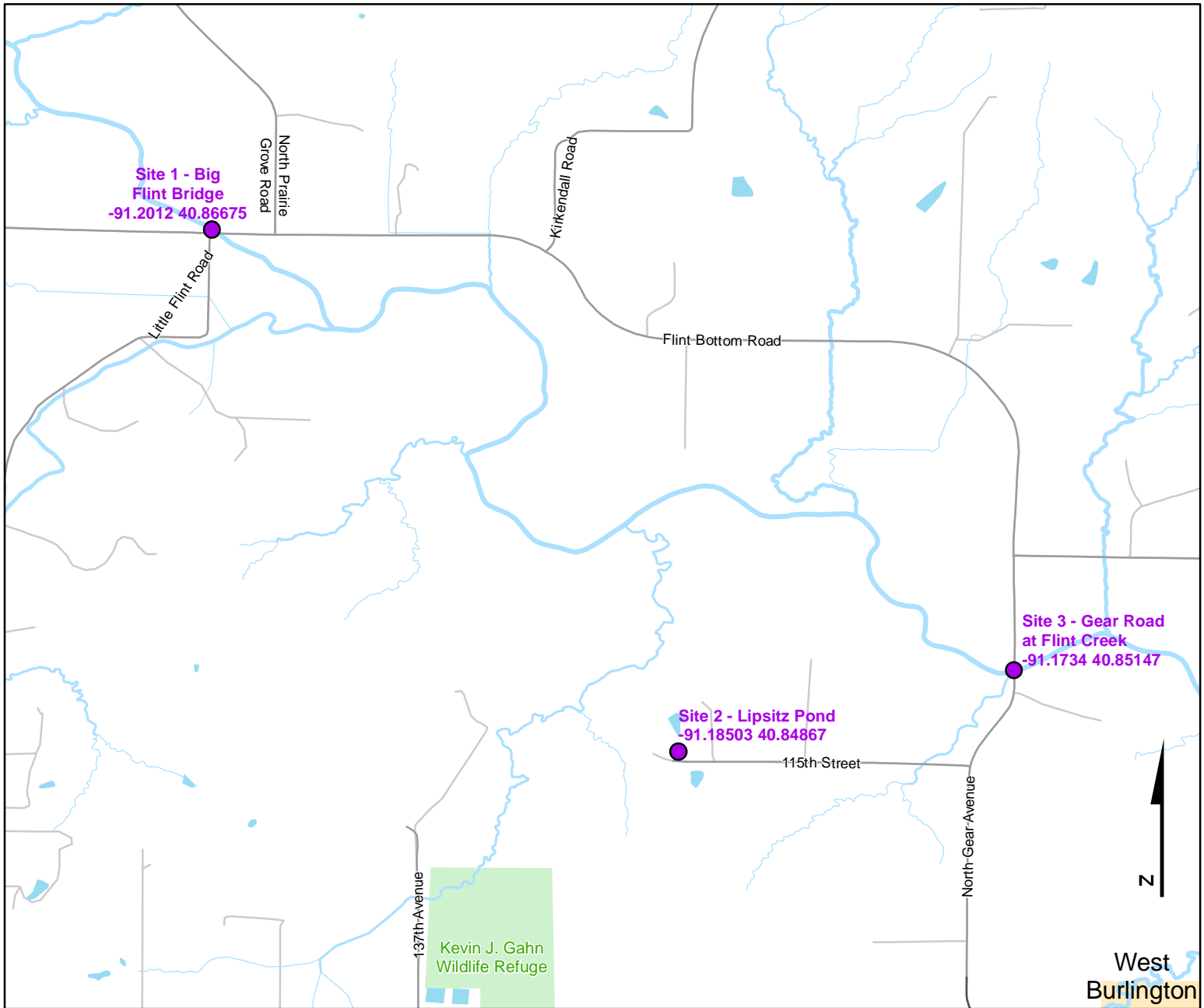
© OpenStreetMap (and contributors), CC-BY-SA



Volunteer Wildlife Monitoring Program (VWMP) Frog and Toad Survey

Route ID: 66 County: Des Moines

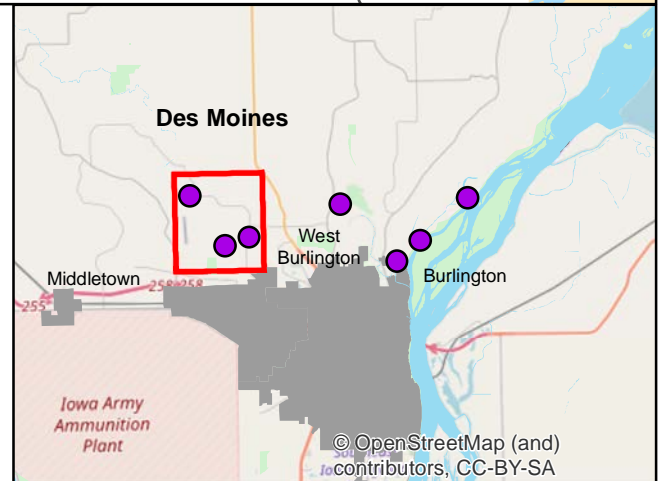
Click for Google Maps to Site 1: <https://www.google.com/maps/dir/?api=1&destination=40.866754825,-91.2011966087>



DNR
Volunteer Wildlife Monitoring Program

Legend

----- Trails

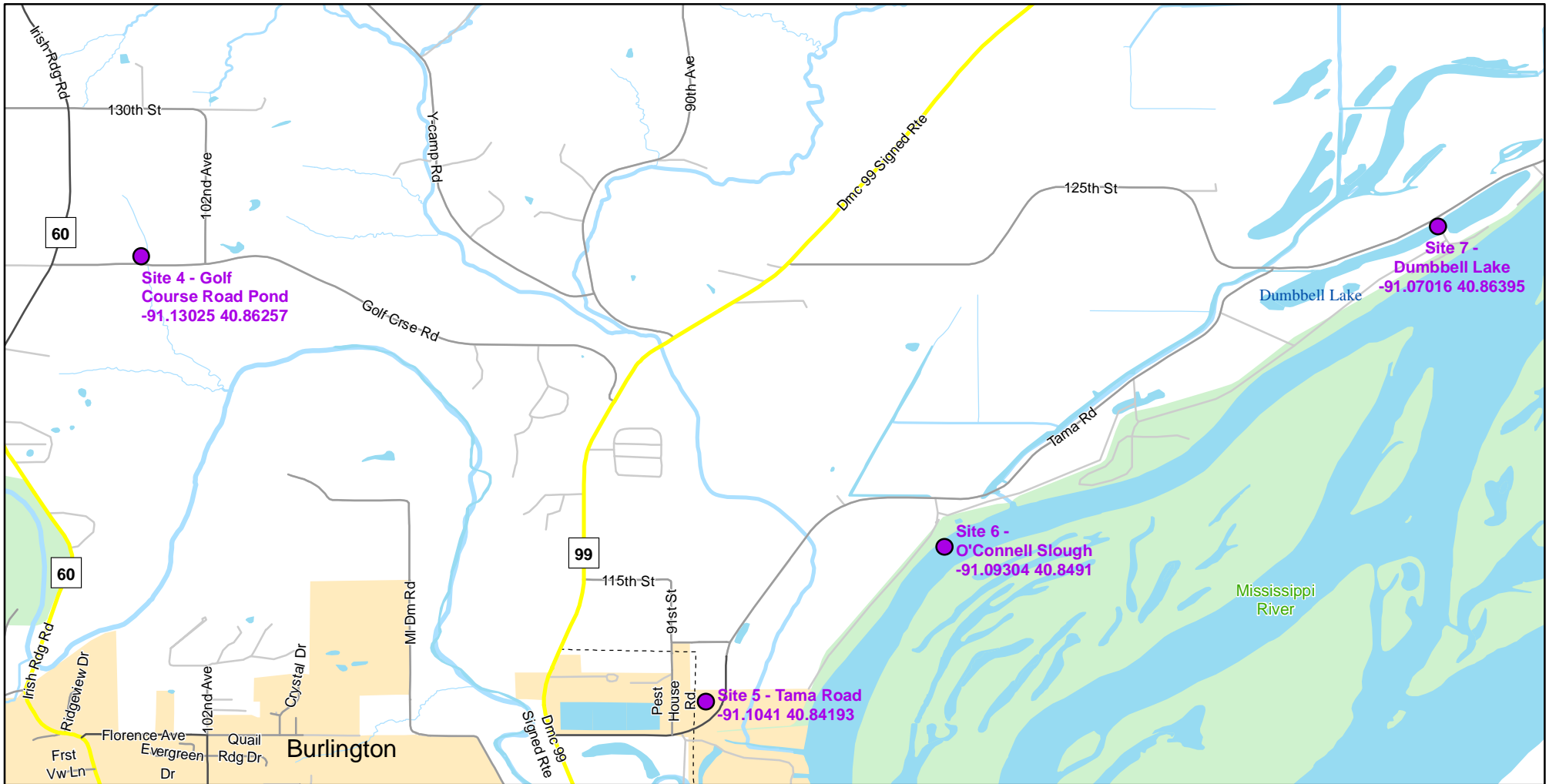




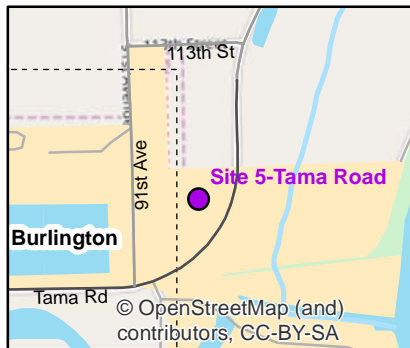
Volunteer Wildlife Monitoring Program (VWMP) Frog

Route ID: 66 County: Des Moines

Click for Google Maps to Site 1: <https://www.google.com/maps/dir/?api=1&destination=40.866754825,-91.2011966087>

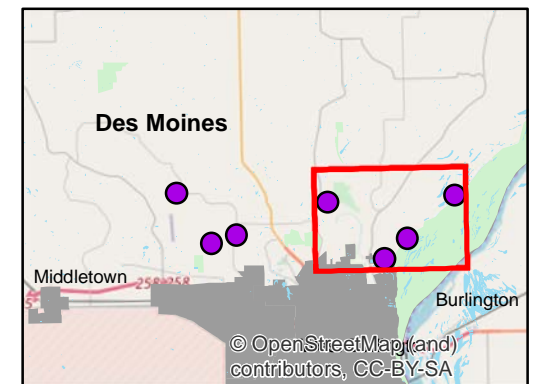
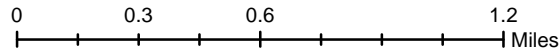


Enlarged View of Site 5



Legend

----- Trails





Frog and Toad Call Survey Route Description

Route ID **66**

Established: 1992

Site Number	Name	County	Latitude	Longitude	Directions
1	Big Flint Bridge	Des Moines	40.8667548	-91.2011966	Just North of the T-intersection of Little Flint road and Flint Bottom Road
2	Lipsitz Pond	Des Moines	40.8486661	-91.1850312	At the end of 115 St.
3	Gear Road at Flint Creek	Des Moines	40.851473	-91.1734001	
4	Golf Course Road Pond	Des Moines	40.8625726	-91.130251	Just east of the intersection of Co. Hwy. X60 and Country Club Road
5	Tama Road	Des Moines	40.8419322	-91.1040963	Shallow pond/marsh, just east of the intersection of Highway 99 and Tama Road
6	O'Connell Slough	Des Moines	40.8491002	-91.0930378	
7	Dumbbell Lake	Des Moines	40.8639517	-91.070163	Is a recognized land mark.