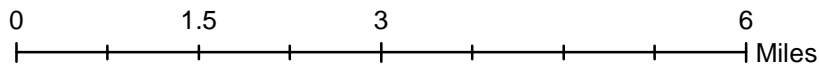
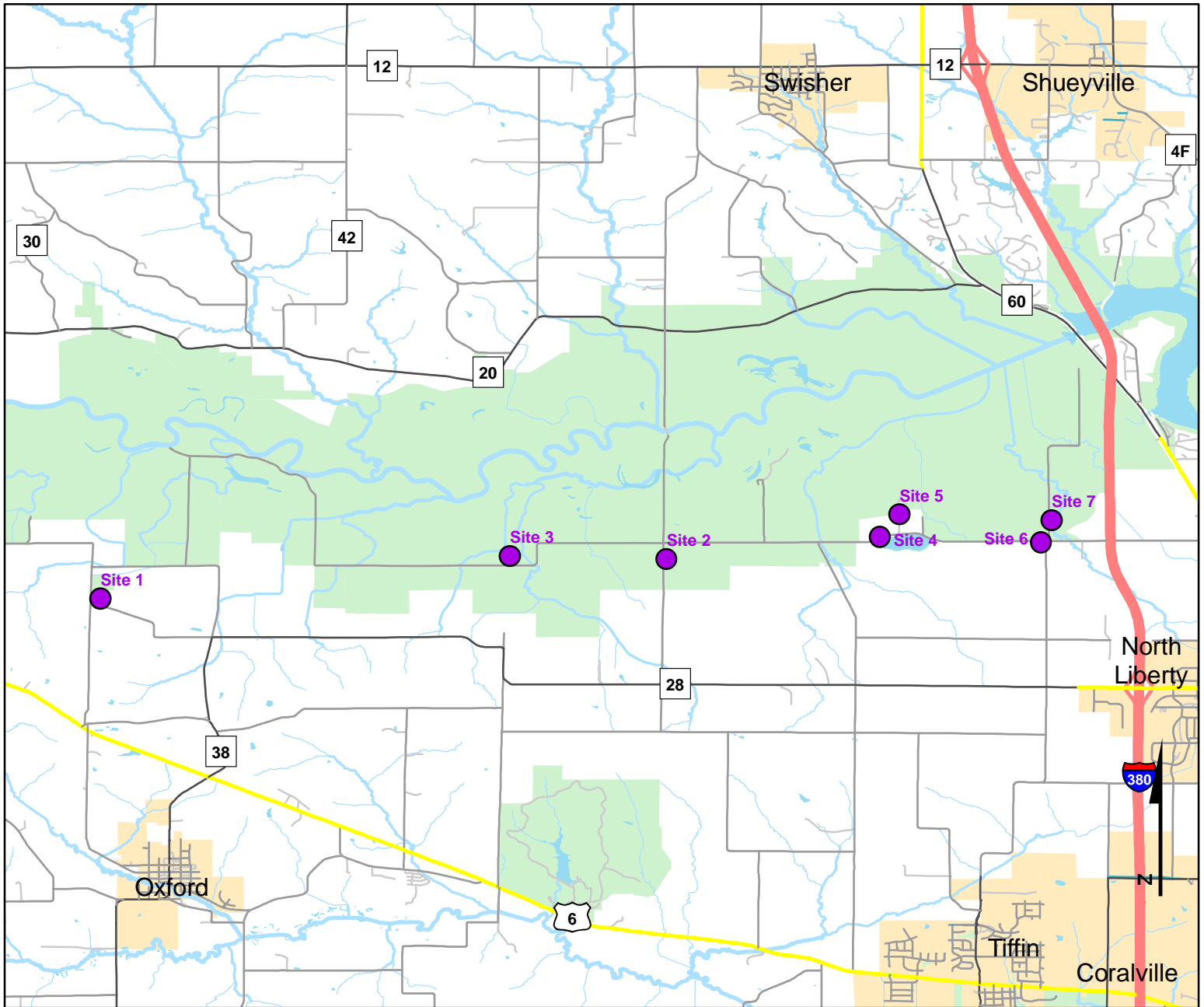




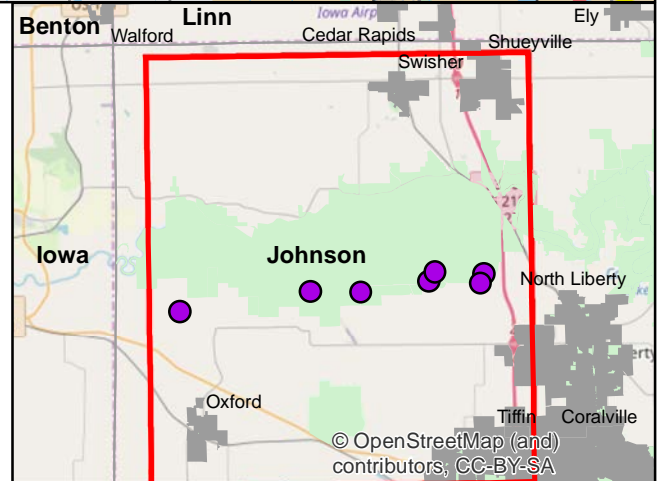
Volunteer Wildlife Monitoring Program (VWMP) Frog and Toad Survey

Route ID: 62 County: Johnson

Click for Google Maps to Site 1: <https://www.google.com/maps/dir/?api=1&destination=41.7661126119,-91.8011317492>



DNR
Volunteer
Wildlife
Monitoring
Program



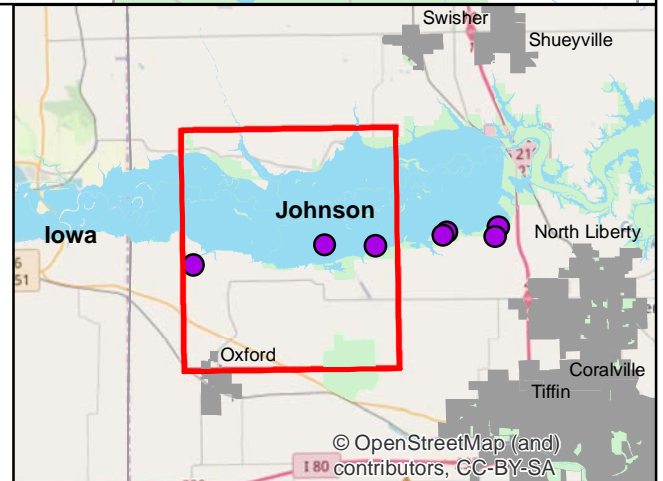
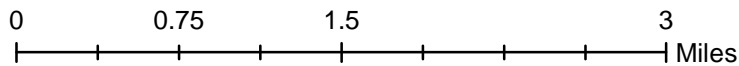
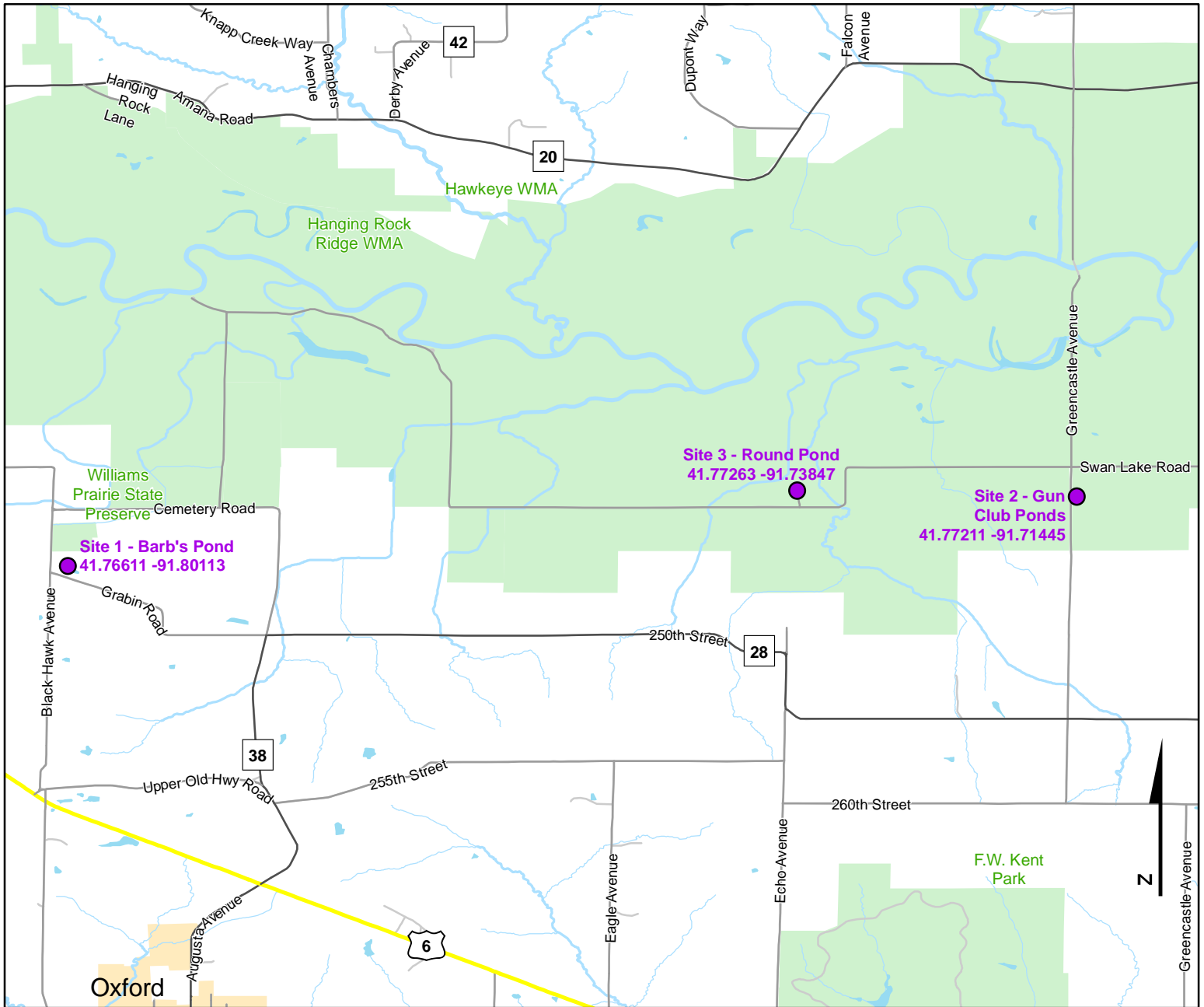
© OpenStreetMap (and) contributors, CC-BY-SA



Volunteer Wildlife Monitoring Program (VWMP) Frog and Toad Survey

Route ID: 62 County: Johnson

Click for Google Maps to Site 1: <https://www.google.com/maps/dir/?api=1&destination=41.7661126119,-91.8011317492>

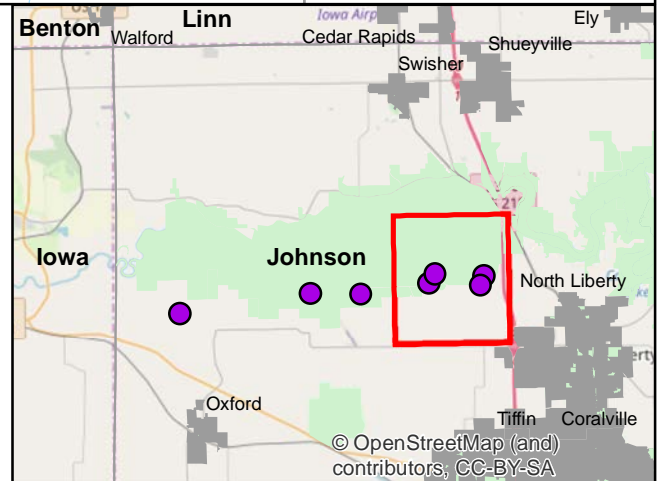
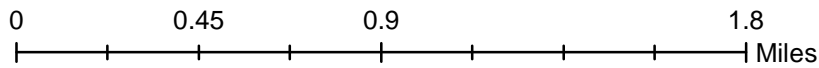
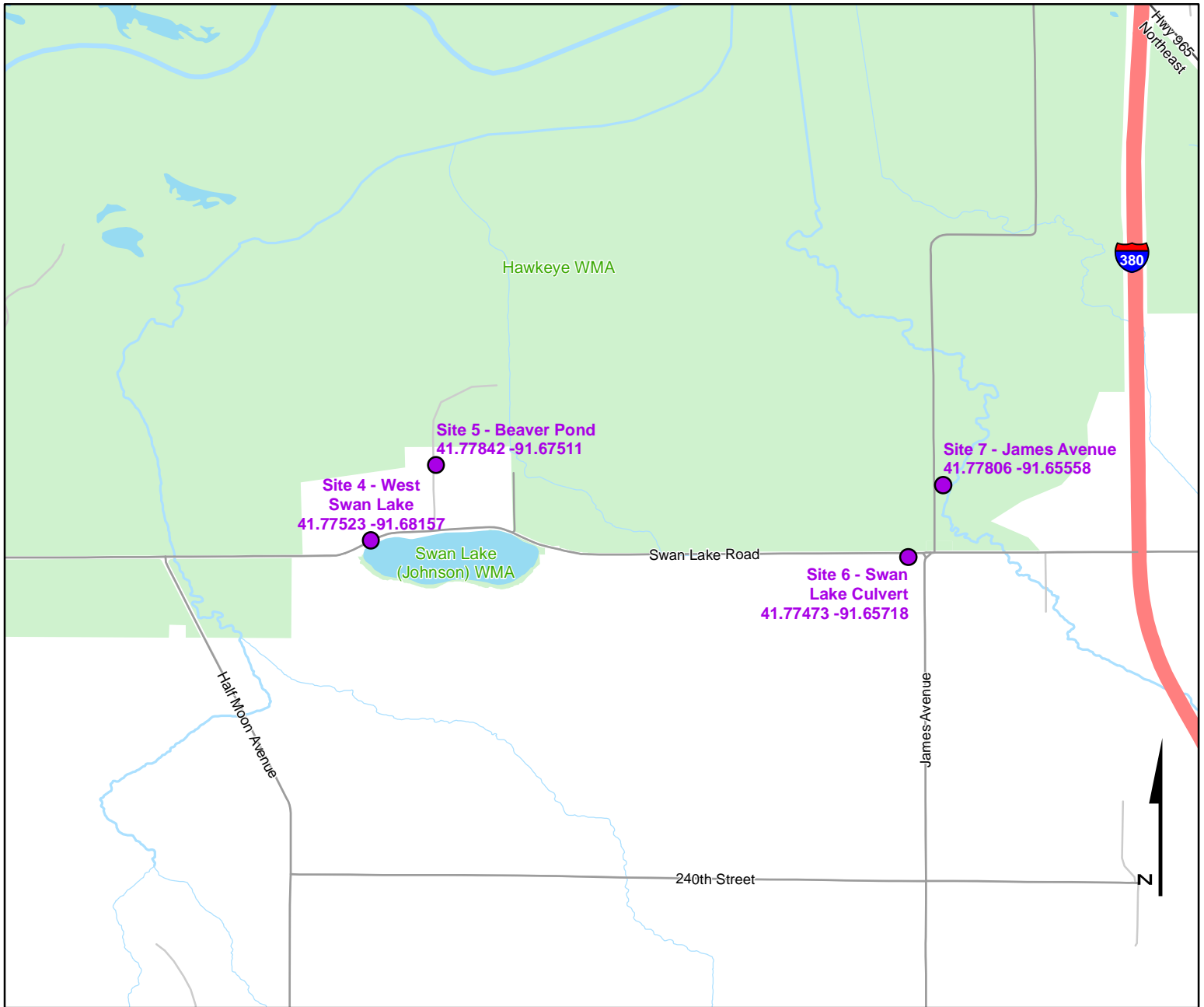




Volunteer Wildlife Monitoring Program (VWMP) Frog and Toad Survey

Route ID: 62 County: Johnson

Click for Google Maps to Site 1: <https://www.google.com/maps/dir/?api=1&destination=41.7661126119,-91.8011317492>





Frog and Toad Call Survey Route Description

Route ID **62**

Established: 1992

Site Number	Name	County	Latitude	Longitude	Directions
1	Grabin Road Pond	Johnson	41.7661126	-91.8011317	NE of intersection of Grabin Rd. and Black Hawk Ave. - small pond not visible from road
2	Gun Club Ponds	Johnson	41.7721105	-91.7144529	0.2 miles south of intersection of Swan Lake Rd. and Green Castle Ave.
3	Round Pond	Johnson	41.772629	-91.7384698	On Swan Lake Road, West of W48 (Greencastle Avenue) intersection.
4	Pond S of Round Pond	Johnson	41.768189	-91.739331	Small pond along farm lane 0.25 mi. S of Swan Lake Road, S of Round Pond
5	Greencastle Avenue Marsh	Johnson	41.778144	-91.71451	Small marsh on E side of Greencastle Avenue, 0.25 mi N of Swan Lake Road
6	West Swan Lake	Johnson	41.7752324	-91.681567	Swan Lake, on Swan Lake Rd. NW. Just east of intersection with Half Moon Ave. NW
7	Sand Point Pond	Johnson	41.7784275	-91.6751001	0.2 mile north of Swan Lake Rd. - on dam at west side of pond.
8	Swan Lake Road Pond	Johnson	41.776538	-91.669181	0.4 mile west of Swan Lake Road's intersections with James Ave.
9	James Avenue Pond	Johnson	41.7780565	-91.6555788	0.2 mile North of intersection of Swan Lake Rd. and James Ave. Small pond with creek running along eastern side. Parking lot is just to the NW of pond.