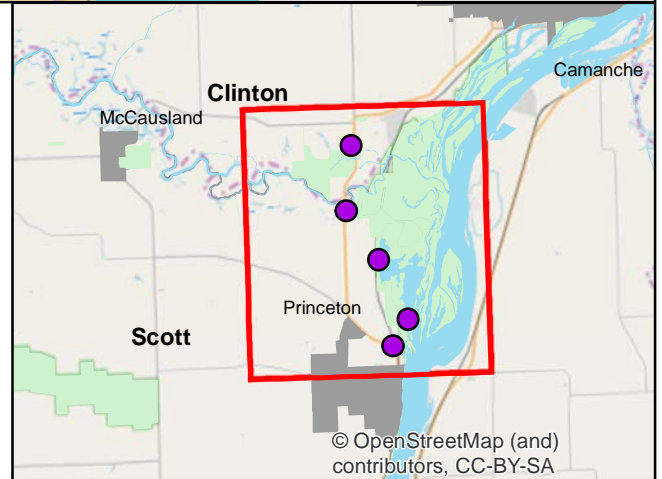
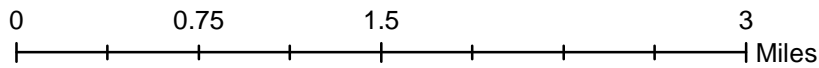
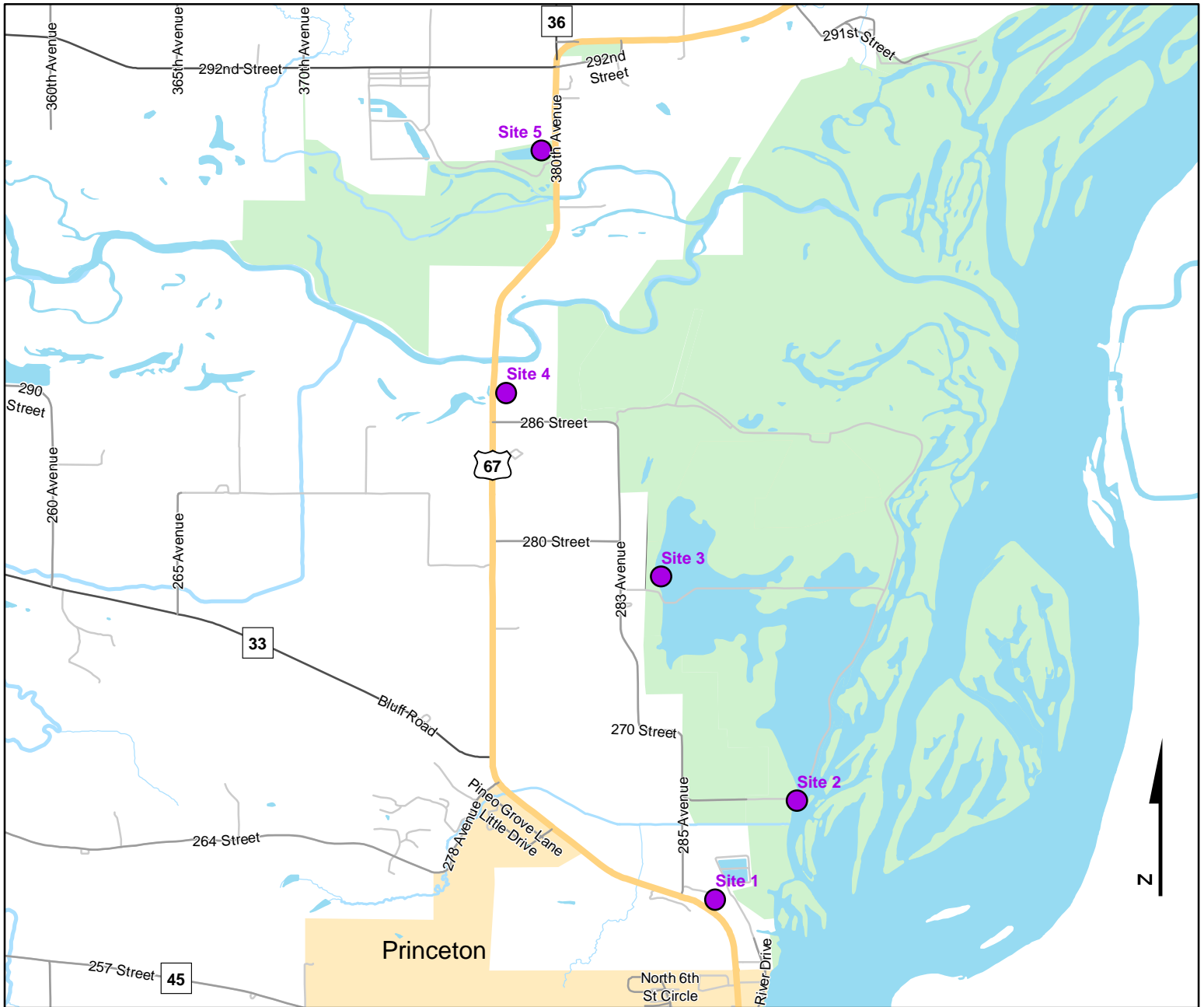




Volunteer Wildlife Monitoring Program (VWMP) Frog and Toad Survey

Route ID: 37 County: Scott

Click for Google Maps to Site 1: <https://www.google.com/maps/dir/?api=1&destination=41.6864137613,-90.3427328141>



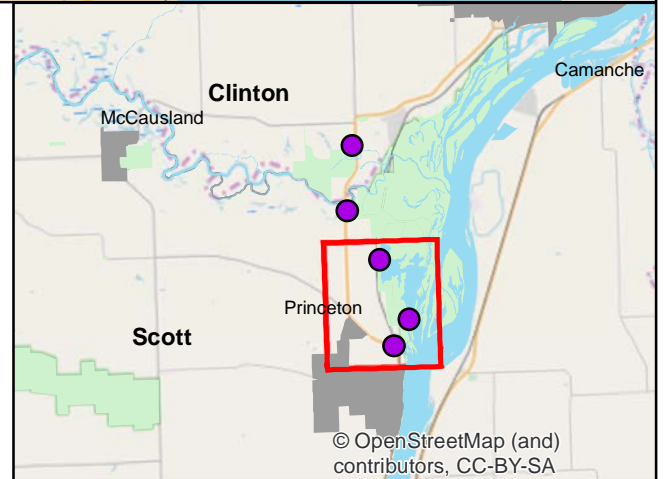
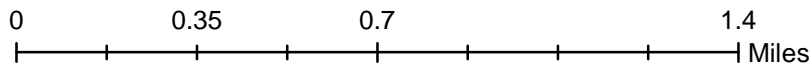
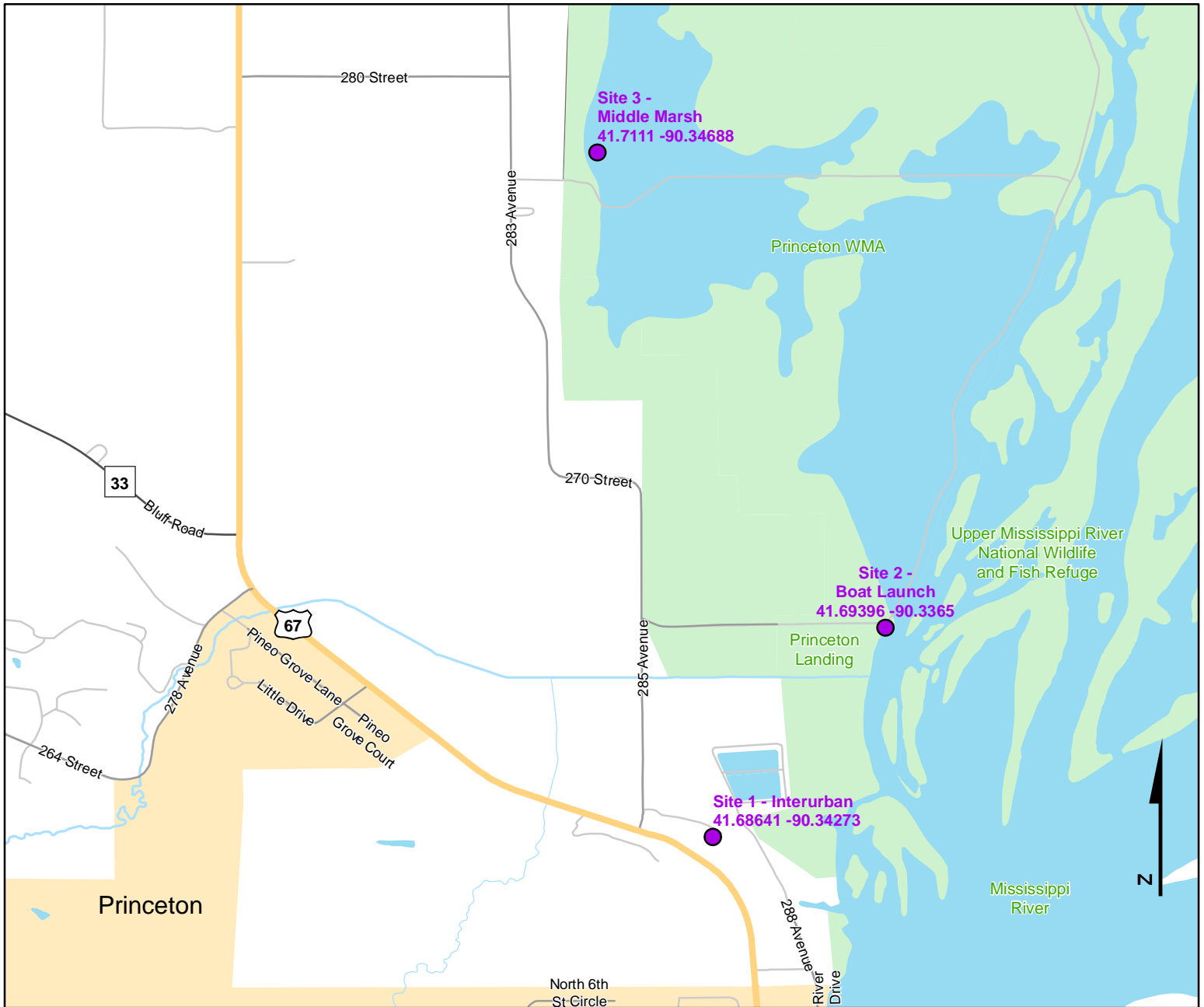
© OpenStreetMap (and contributors, CC-BY-SA)



Volunteer Wildlife Monitoring Program (VWMP) Frog and Toad Survey

Route ID: 37 County: Scott

Click for Google Maps to Site 1: <https://www.google.com/maps/dir/?api=1&destination=41.6864137613,-90.3427328141>



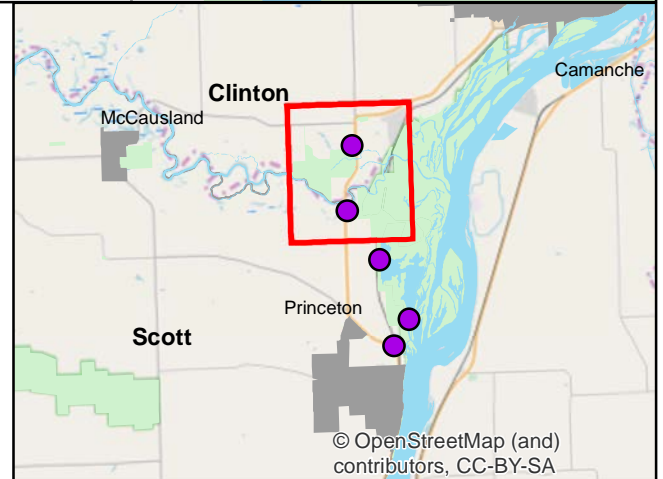
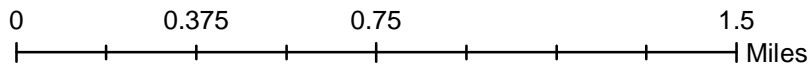
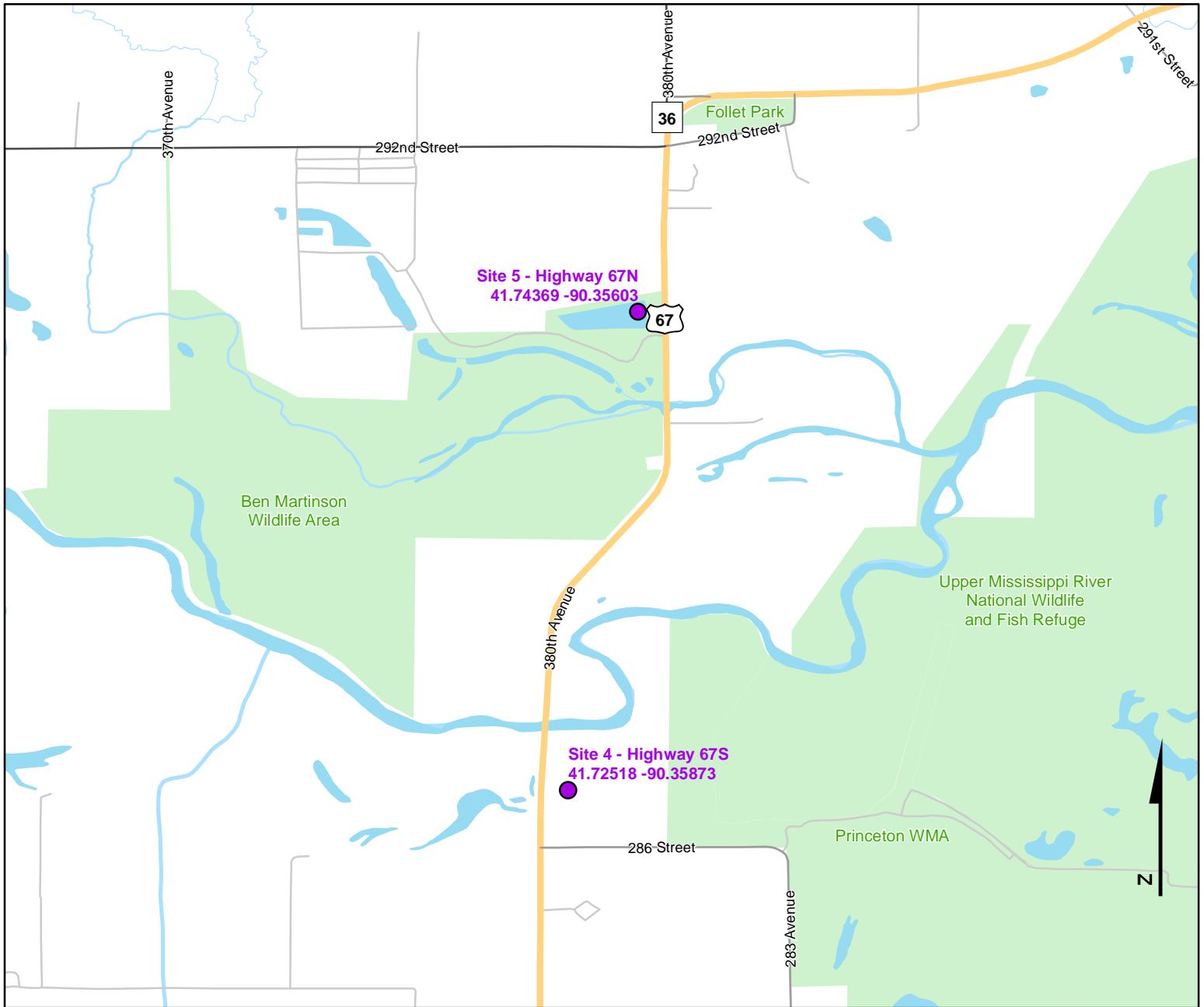
© OpenStreetMap (and contributors), CC-BY-SA



Volunteer Wildlife Monitoring Program (VWMP) Frog and Toad Survey

Route ID: 37 County: Scott

Click for Google Maps to Site 1: <https://www.google.com/maps/dir/?api=1&destination=41.6864137613,-90.3427328141>





Frog and Toad Call Survey Route Description

Route ID **37**

Established:

Site Number	Name	County	Latitude	Longitude	Directions
1	Interurban	Scott	41.6864138	-90.3427328	
2	Boat Launch	Scott	41.6939605	-90.3364982	
3	Middle Marsh	Scott	41.7110962	-90.346884	
4	Highway 67S	Scott	41.7251755	-90.3587348	
5	Highway 67N	Scott	41.7436926	-90.3560275	