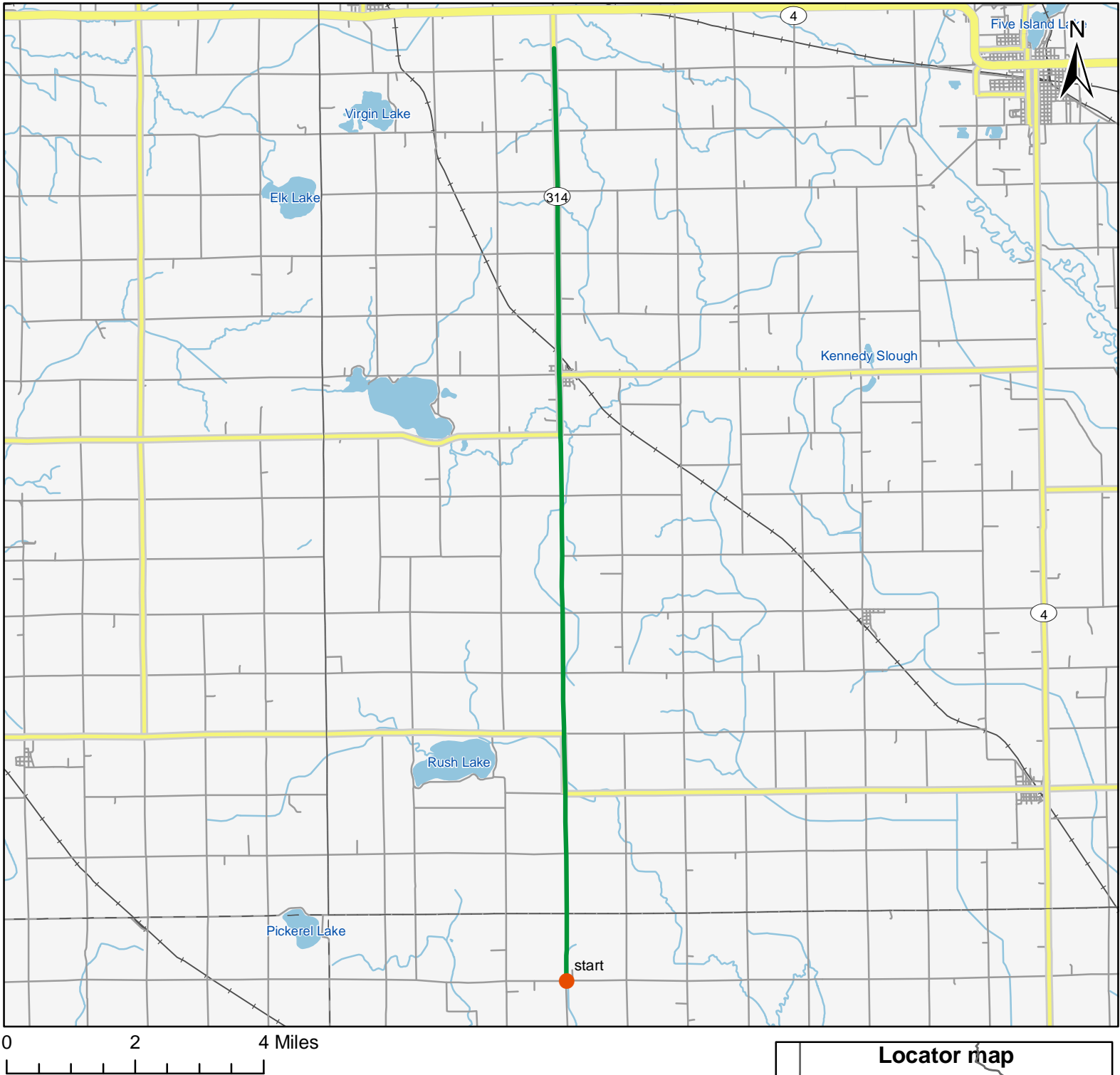


# North American Amphibian Monitoring Program



Route: 360509 Ayrshire, IA



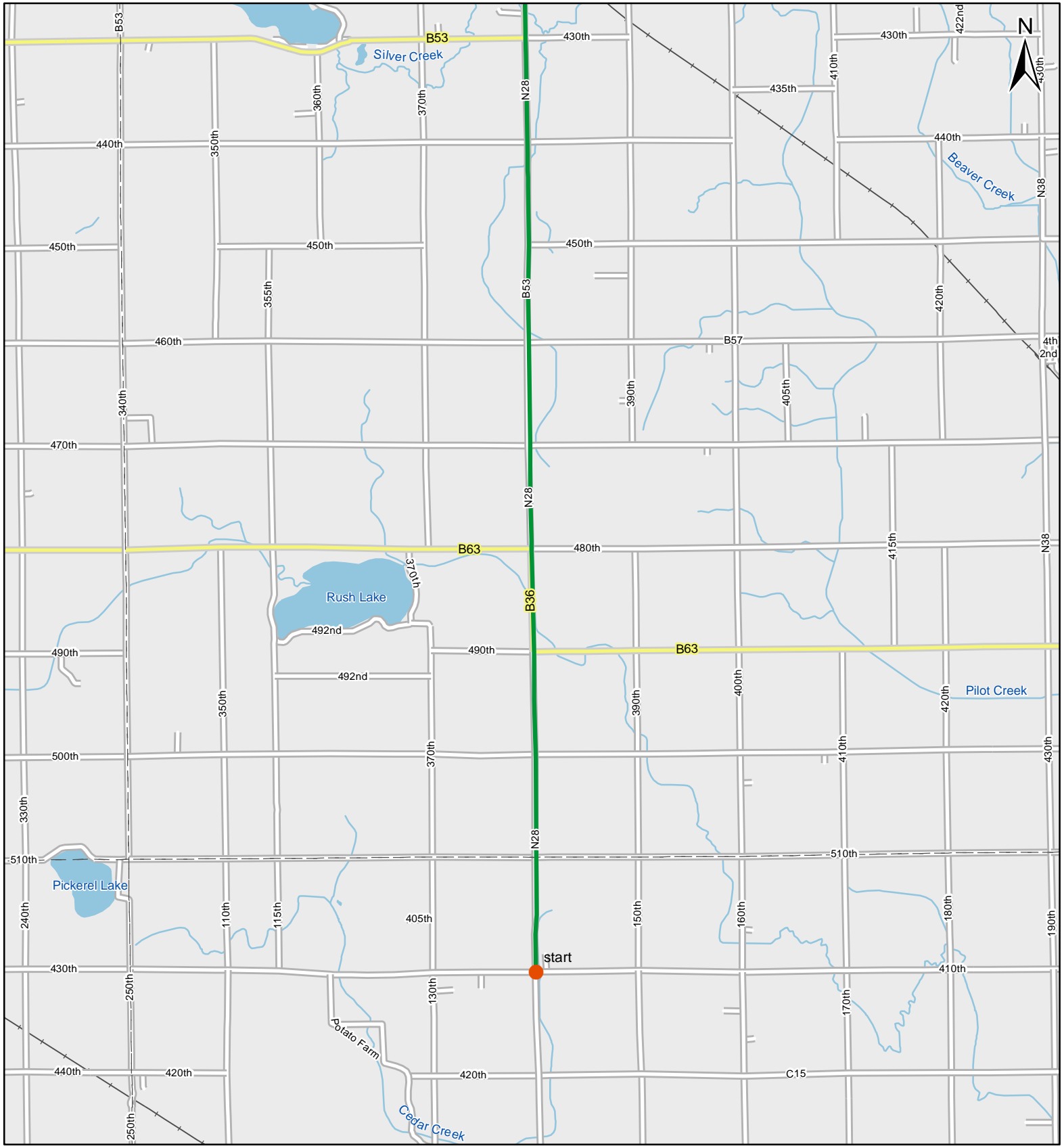
**Legend**

- Stop Locations
- Route Path



For more information, please visit the NAAMP website:  
<http://www.pwrc.usgs.gov/naamp/>

# Route: 360509 Ayrshire, IA

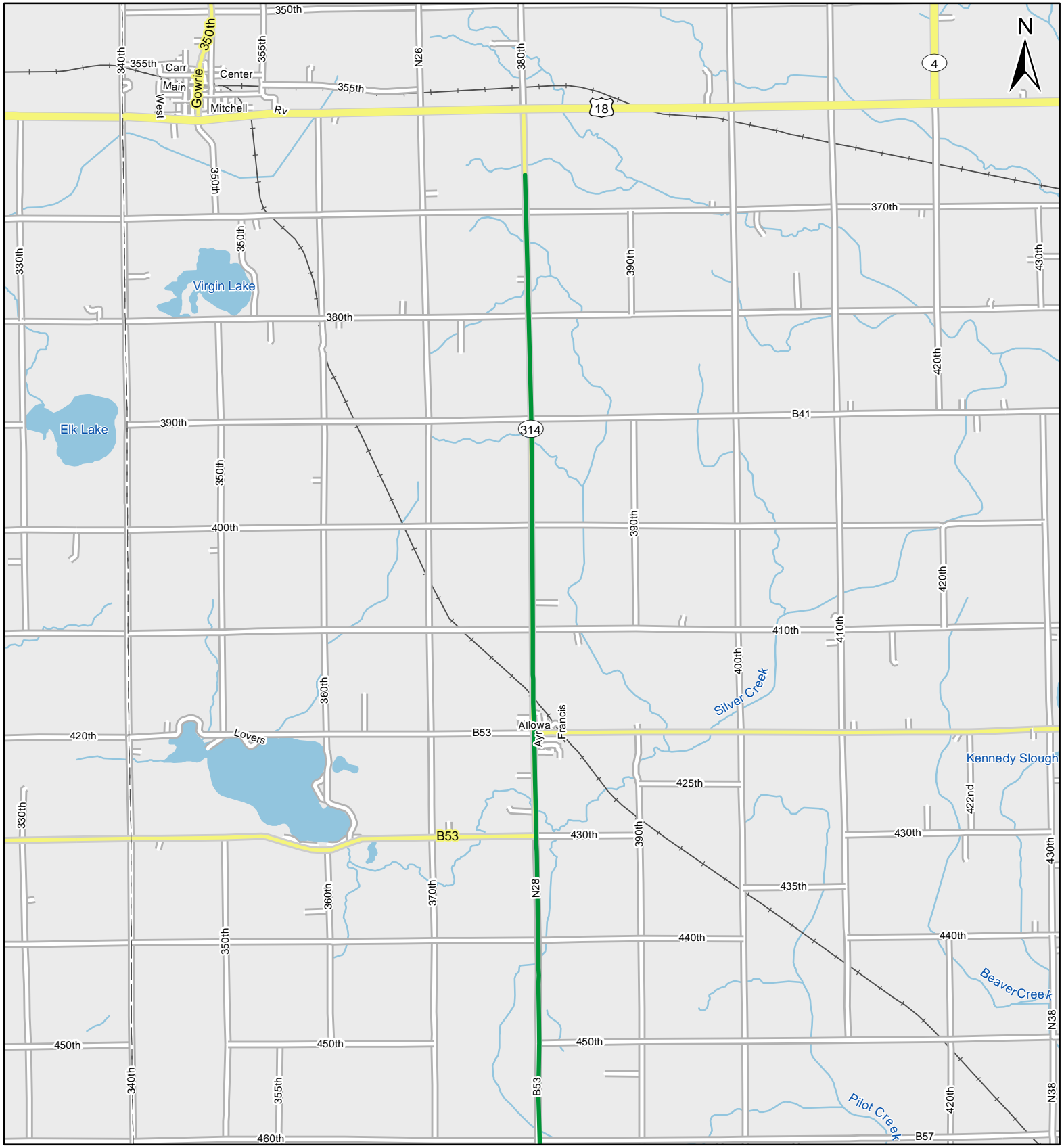


1:75,000

**Legend**

- Stop Locations
- Route Path

# Route: 360509 Ayrshire, IA



0 1 Miles

1:75,000

**Legend**

- Stop Locations
- Route Path



# Frog and Toad Call Survey Route Description

Route ID **360509**

Established:

Site Number	Name	County	Latitude	Longitude	Directions
1		Pocahontas	42.8992004	-94.8364029	North of 410th, creek on right side of N28.
2	1.5	Palo Alto	42.9164009	-94.8361969	Ephemeral pond on right side of N28, 2/10 mi south of 500th.
3	1.2	Palo Alto	42.9352989	-94.8363037	Ephemeral pond on right side of road, next to small pull-off.
4	0.8	Palo Alto	42.9488983	-94.8363037	Intersection of creek and N28 just north of B63
5	1.6	Palo Alto	42.9700012	-94.8364029	Creek to right of road just north of 470th.
6	1	Palo Alto	42.9838982	-94.8364029	150 feet north of 460th, creek of right of road
7	1.7	Palo Alto	43.013401	-94.8360977	Creek intersects N28 near farm.
8	1.4	Palo Alto	43.0326996	-94.8363037	Creek intersects N28 2/10 mile north 420th.
9	3.2	Palo Alto	43.0802002	-94.8360977	Small wooded area to the right of road with pond.
10	2.6	Palo Alto	43.1127014	-94.8365021	Small creek intersects N28, ephemeral ponds on both sides of road.