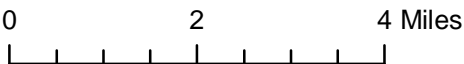
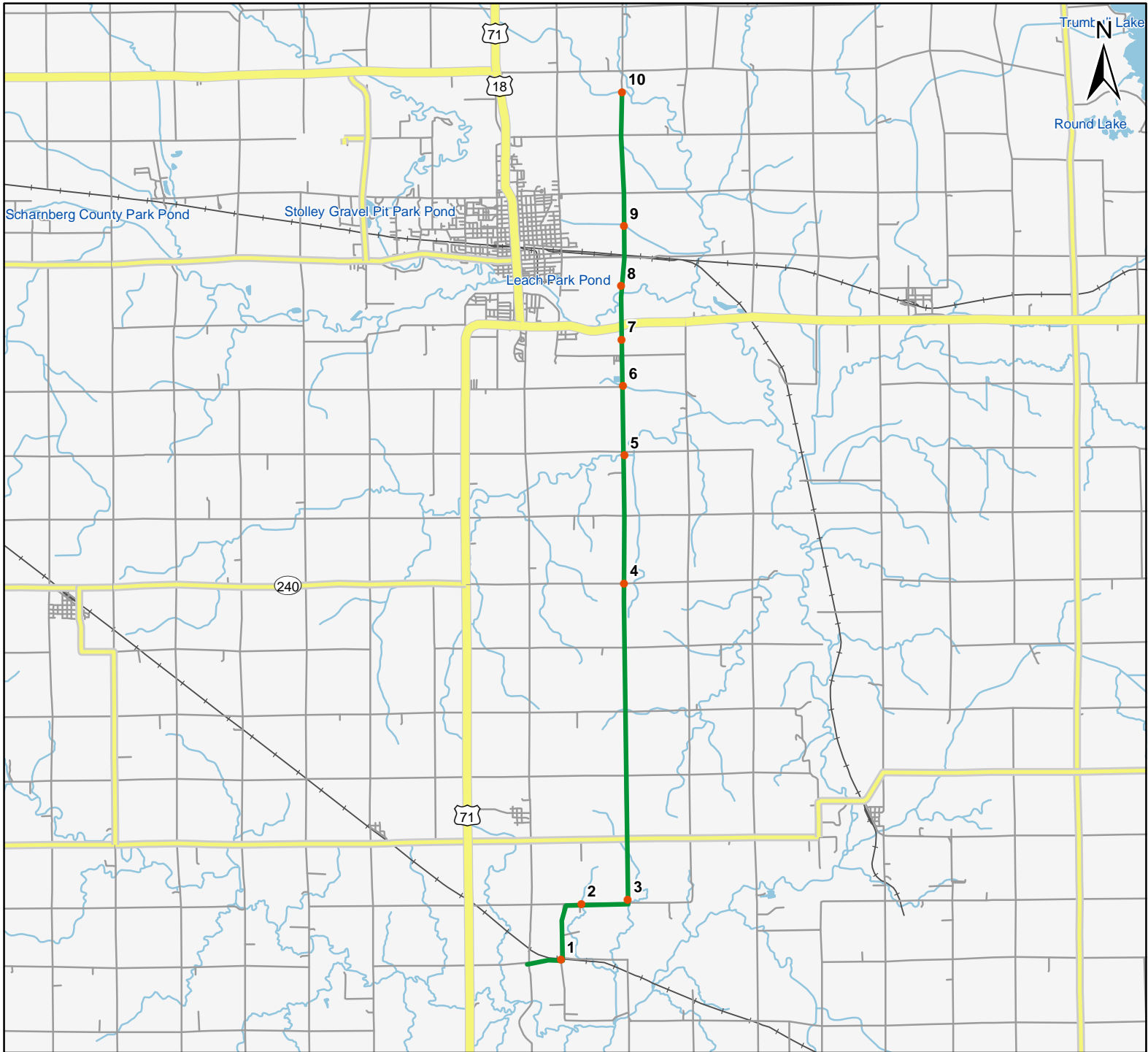


North American Amphibian Monitoring Program

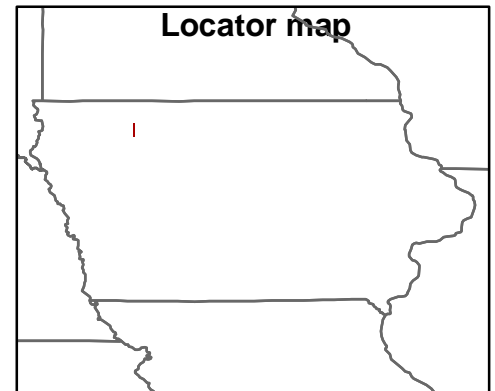


Route: 360502 Greenville, IA



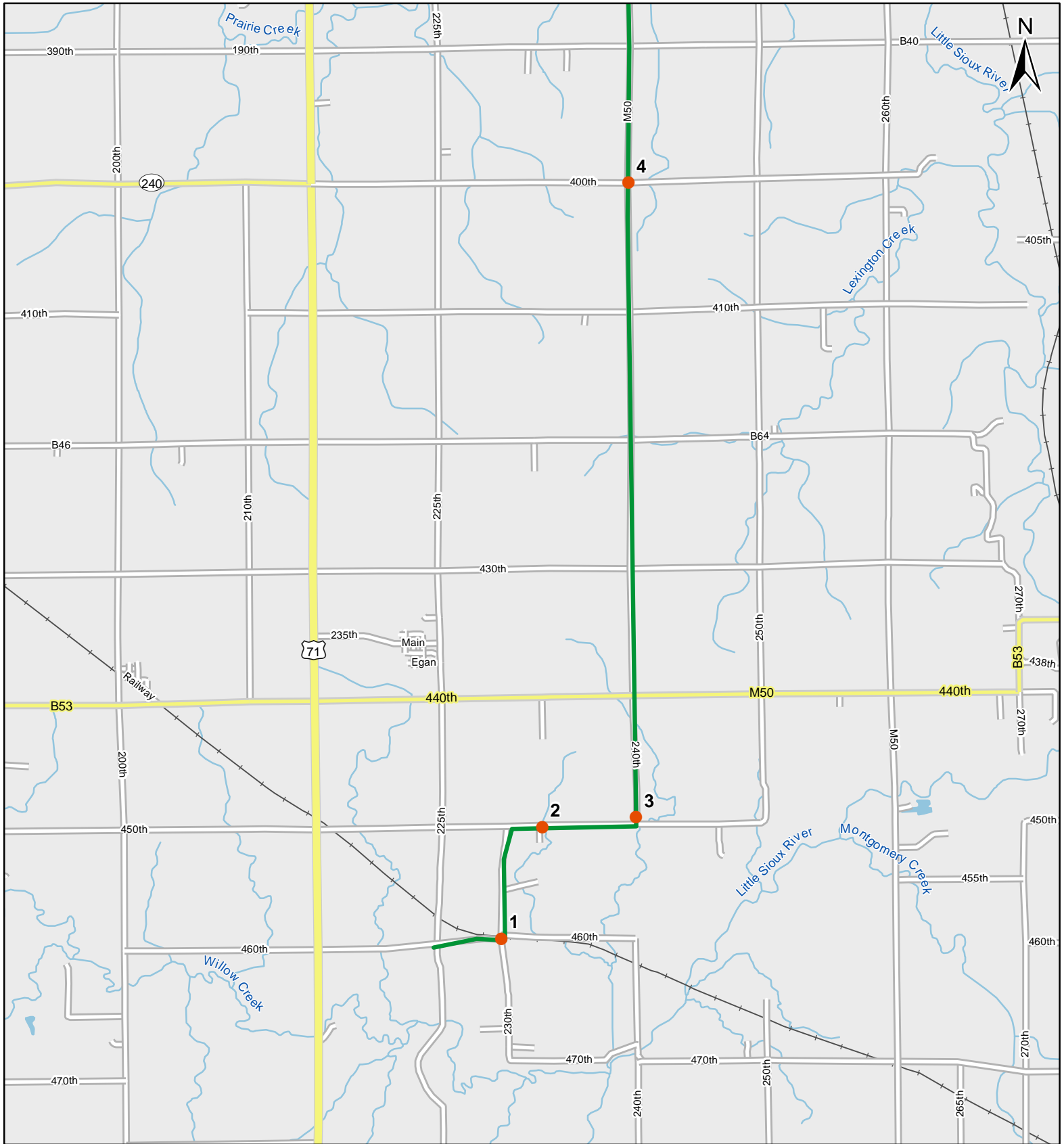
Legend

- Stop Locations
- Route Path



For more information, please visit the NAAMP website:
<http://www.pwrc.usgs.gov/naamp/>

Route: 360502 Greenville, IA



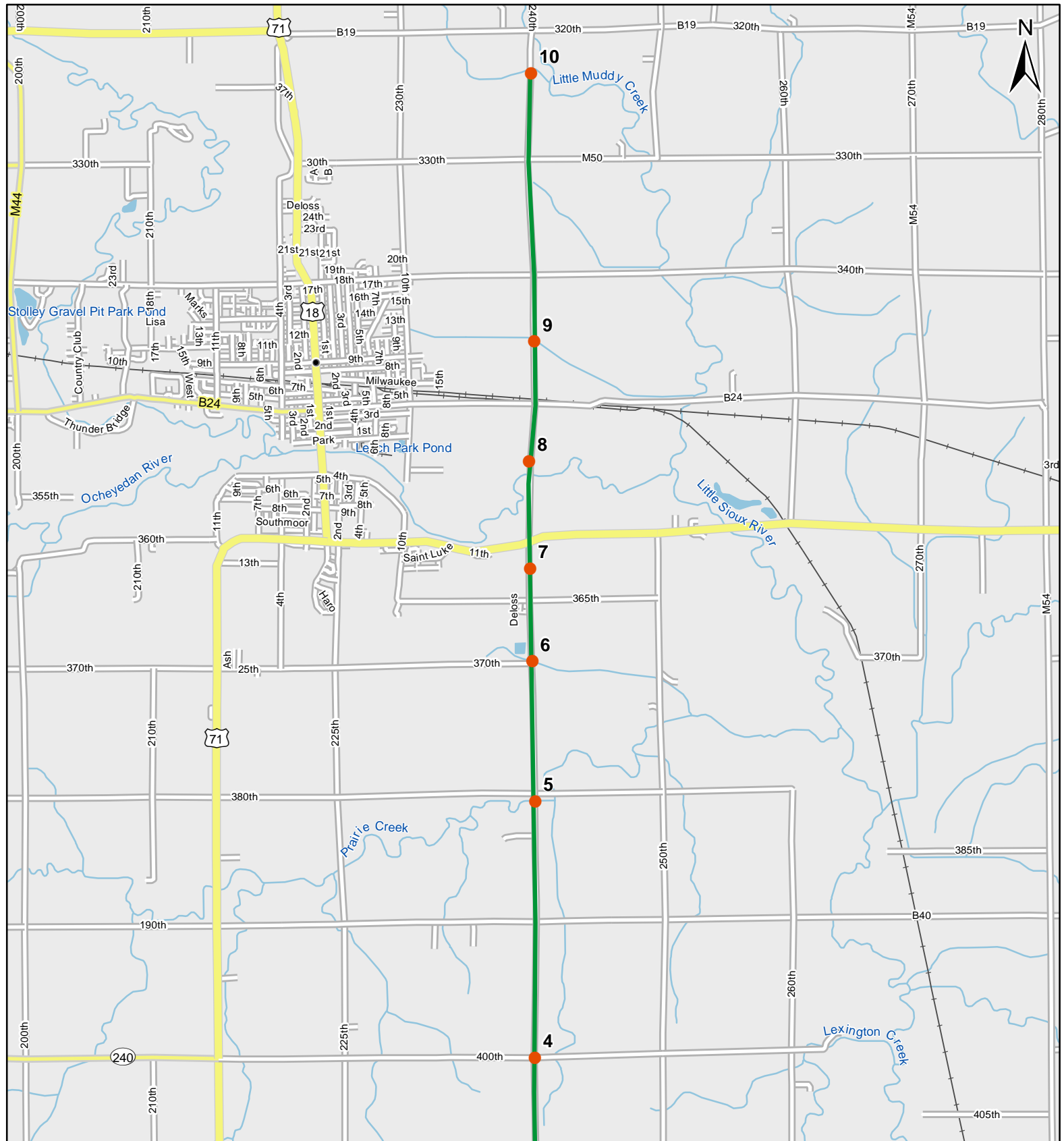
0 1 Miles

1:60,000

Legend

- Stop Locations
- Route Path

Route: 360502 Greenville, IA



0 1 Miles

1:60,000

Legend

- Stop Locations
- Route Path



Frog and Toad Call Survey Route Description

Route ID **360502**

Established:

| Site Number | Name | County | Latitude | Longitude | Directions |
|-------------|------|--------|------------|-------------|--|
| 1 | 0.5 | Clay | 42.9833984 | -95.1332016 | Go 0.5 miles from start point on map, east along 460th until you come to T intersection w/ 230th. Turn north (left) and stop at grown over RR right of way. Cattails on left side. |
| 2 | 1.6 | Clay | 42.9958992 | -95.1267014 | Continue north on 230th then turn east (right) on 450th. Small grassy stream on southern side of road, grassed waterway on north. |
| 3 | 2.4 | Clay | 42.9968987 | -95.1123962 | Turn north on 240th ave, CR M50. Small pond on other side of trees on east (right) side, immediately after turning. |
| 4 | 7.4 | Clay | 43.0681992 | -95.1126022 | Deep ditch, corner of 400th and 240th. |
| 5 | 9.4 | Clay | 43.0970993 | -95.1120987 | Continue north on M50. Stop is at bridge over creek just before you get to 380th. |
| 6 | 10.5 | Clay | 43.1128006 | -95.1122971 | Continue north on M50. Stop just after passing 370th. Grassed stream on East (right) side of road. |
| 7 | 11.2 | Clay | 43.1232986 | -95.1125031 | Cattail filled ditch on east (right) side of road. |
| 8 | 12 | Clay | 43.1353989 | -95.1125031 | Cross over Hwy 18. Stop just north of bridge over Ocheyedars river. 2 ponds one on either side of road. |
| 9 | 13 | Clay | 43.1488991 | -95.1115036 | Continue north, cross over RR tracks and 350th. Small grass lined stream crosses under road. Power lines run along it. |



Frog and Toad Call Survey Route Description

10

15.1

Clay

43.1791

-95.1116028

Bridge just before you get to curve in road to left (heading to 18/71). Small grassy stream.