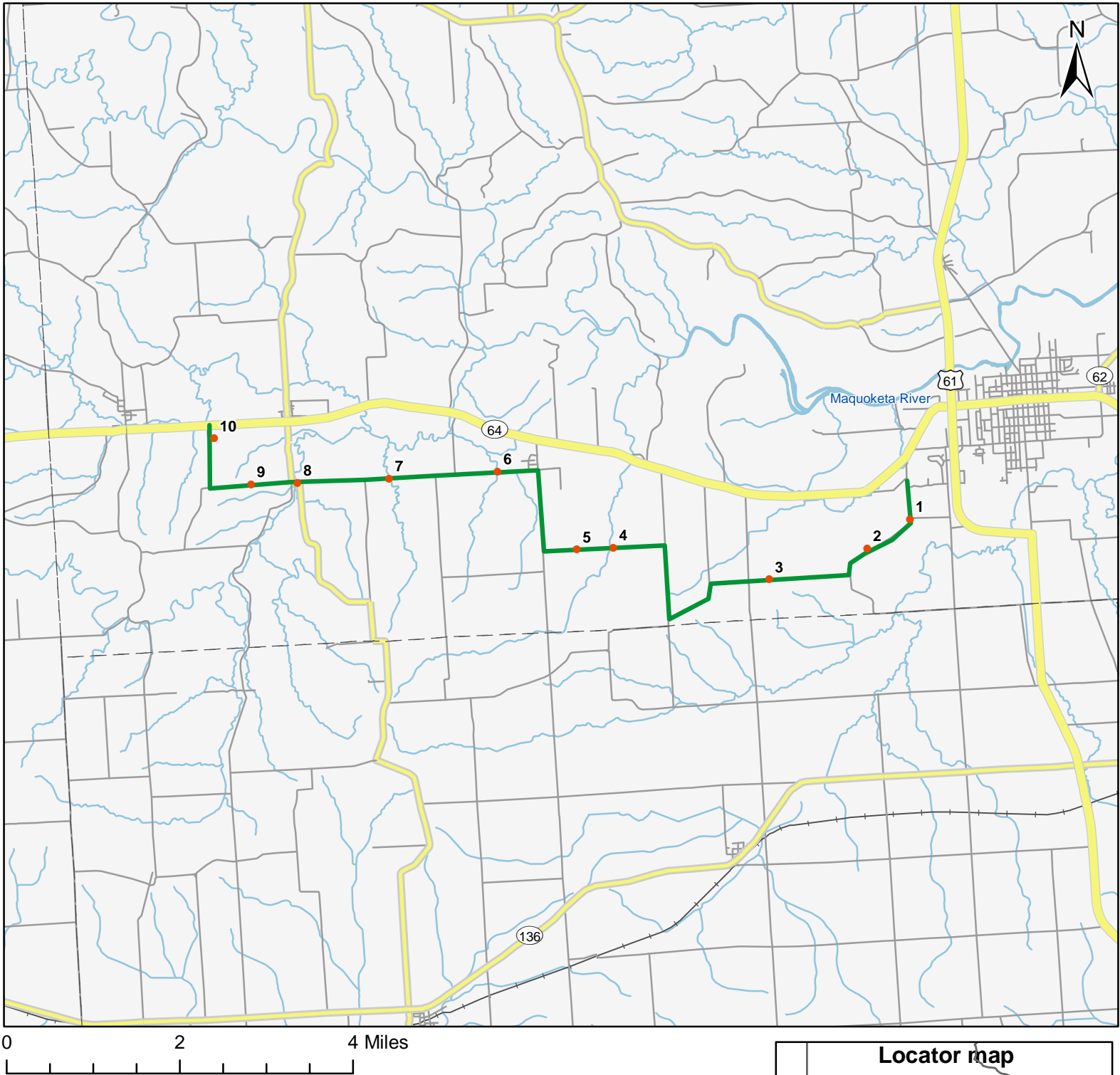


North American Amphibian Monitoring Program

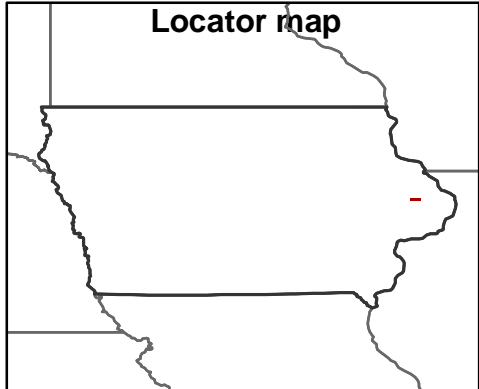


Route: 360313 Maquoketa, IA



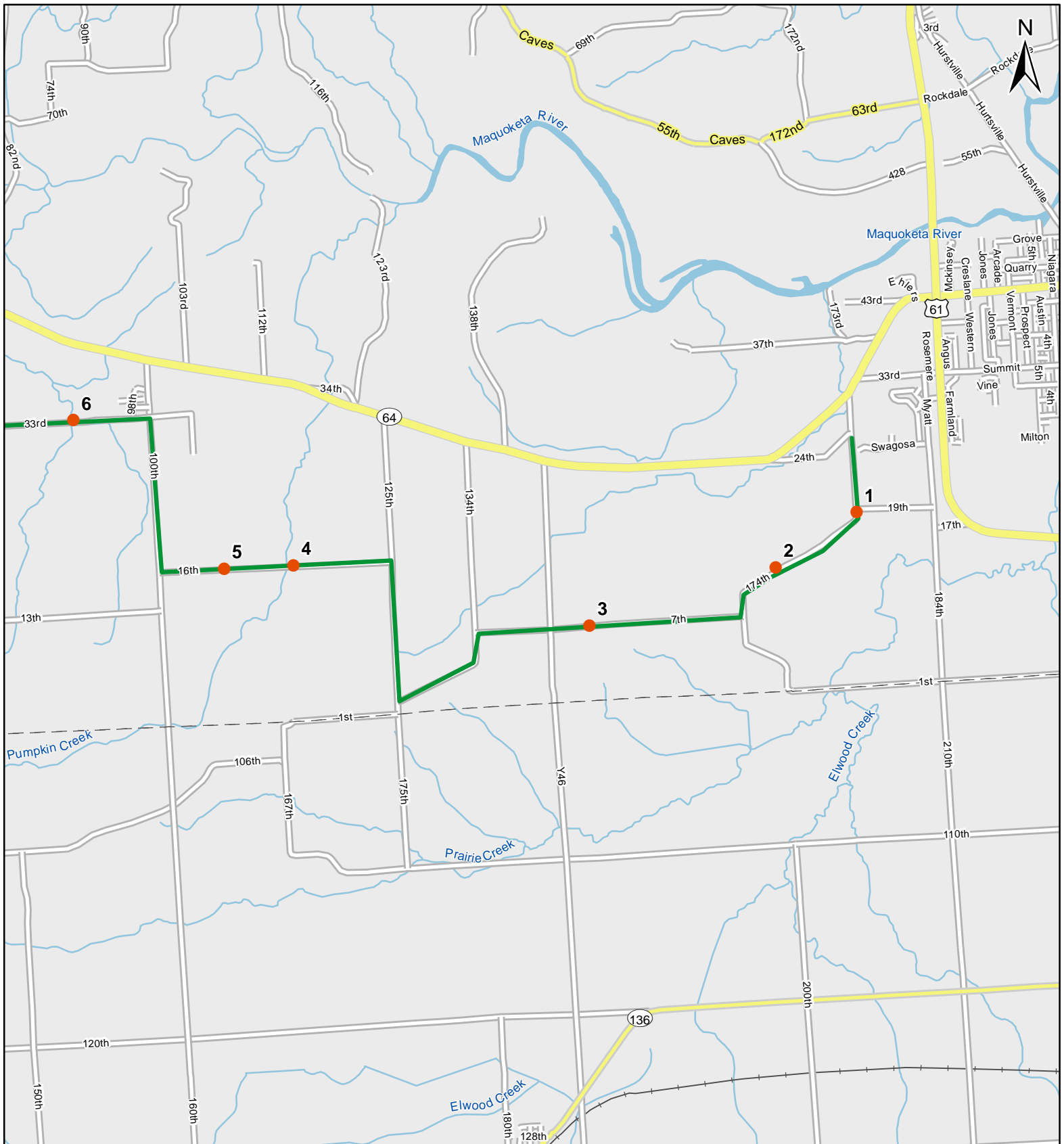
Legend

- Stop Locations
- Route Path



For more information, please visit the NAAMP website:
<http://www.pwrc.usgs.gov/naamp/>

Route: 360313 Maquoketa, IA



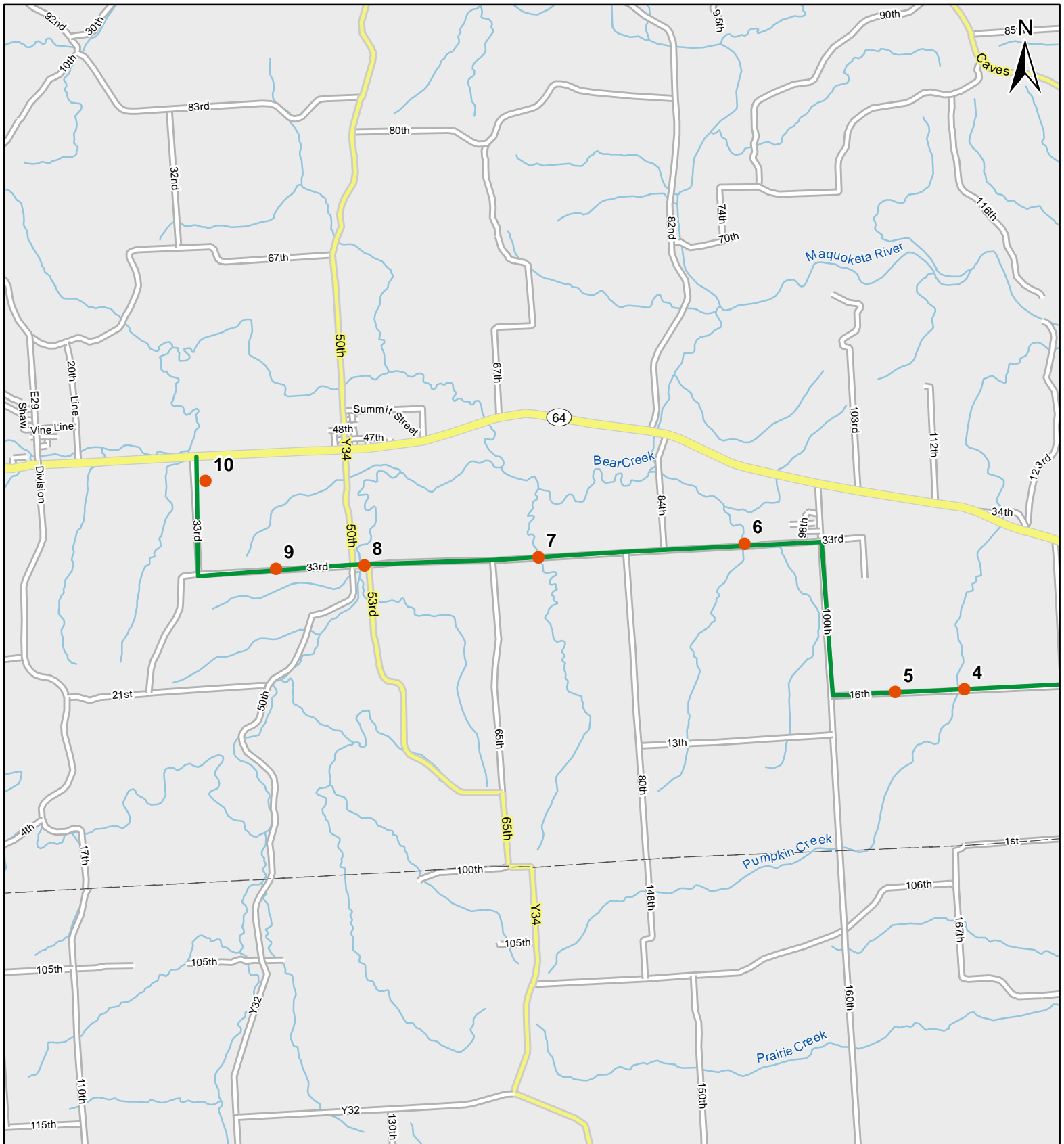
0 1 Miles

1:50,000

Legend

- Stop Locations
- Route Path

Route: 360313 Maquoketa, IA



1:50,000

Legend

- Stop Locations
- Route Path



Frog and Toad Call Survey Route Description

Route ID **360313**

Established:

Site Number	Name	County	Latitude	Longitude	Directions
1	0	Jackson	42.049099	-90.6941986	At the intersection of 19th and 174th.
2	0.6	Jackson	42.0443993	-90.7048035	Damp Ditch
3	2	Jackson	42.0400009	-90.7285995	new pond, small creek
4	5	Jackson	42.0472984	-90.7652969	creek
5	5.5	Jackson	42.0474014	-90.7740021	pond
6	7.4	Jackson	42.0620995	-90.7918015	woodland/riparian creek
7	8.8	Jackson	42.0620003	-90.8178024	woodland/riparian creek
8	9.9	Jackson	42.0621986	-90.8396988	stream
9	10.5	Jackson	42.0624008	-90.8507996	woodland pond -after count road y-34/50th Ave. on 33rd st.
10	11.7	Jackson	42.0709991	-90.8590012	Baldwin Marsh - Turn right on 33rd Ave. from 33rd St.