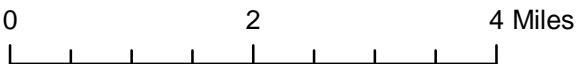
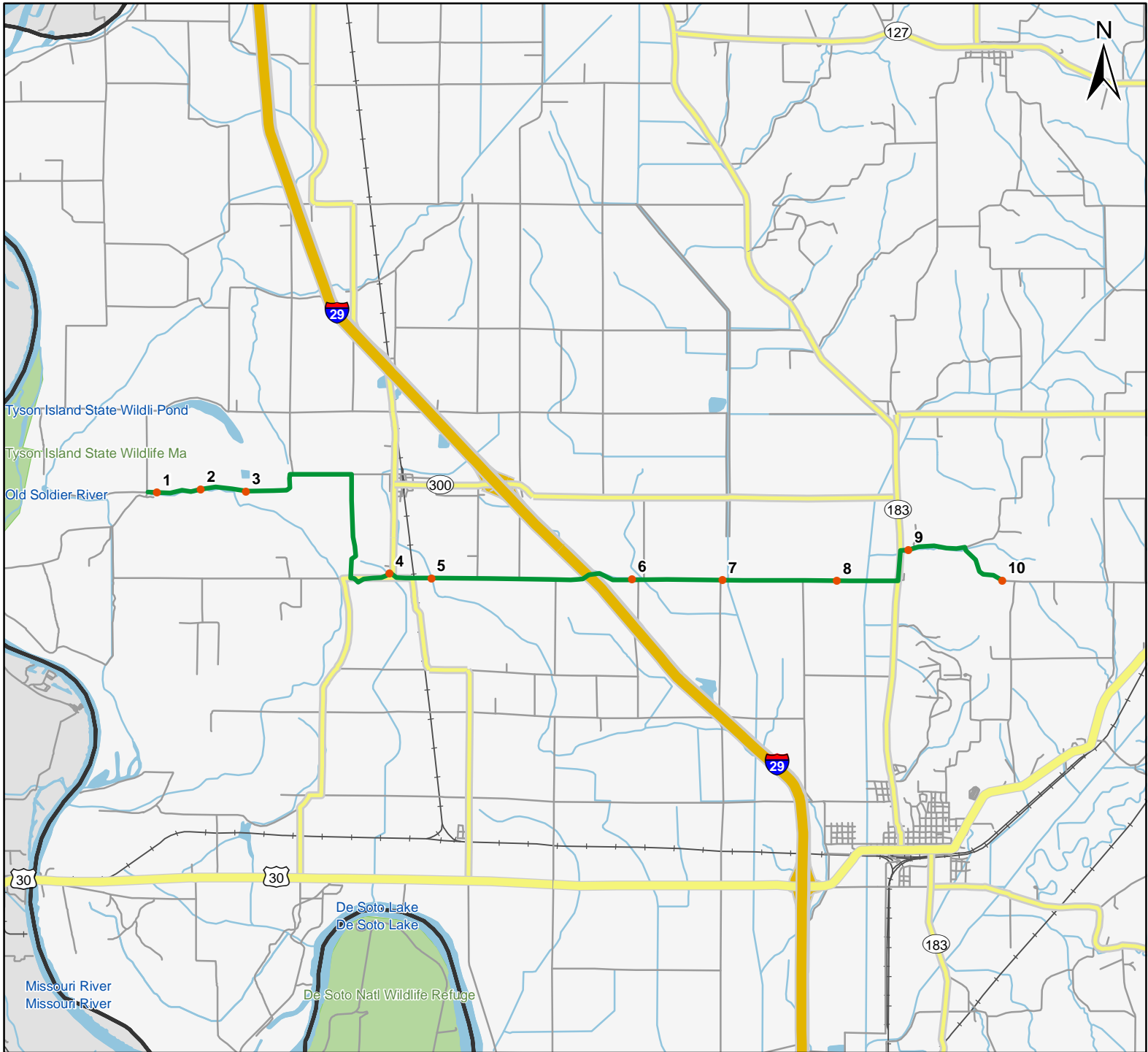


North American Amphibian Monitoring Program

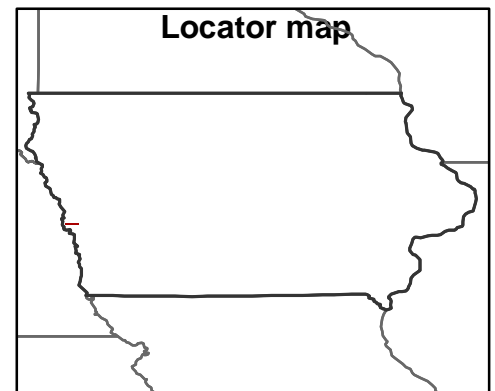


Route: 360114 Modale, IA



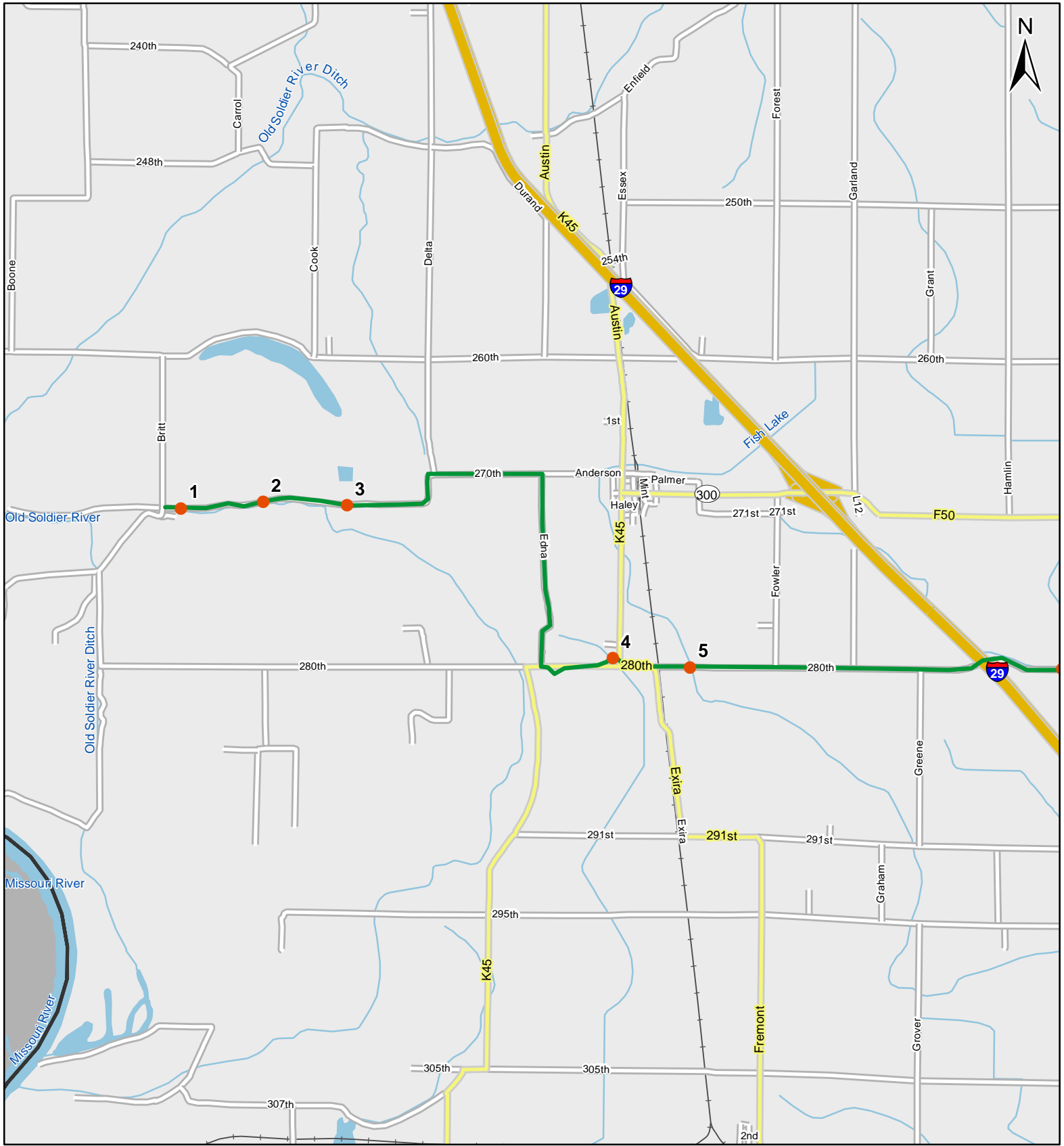
Legend

- Stop Locations
- Route Path



For more information, please visit the NAAMP website:
<http://www.pwrc.usgs.gov/naamp/>

Route: 360114 Modale, IA

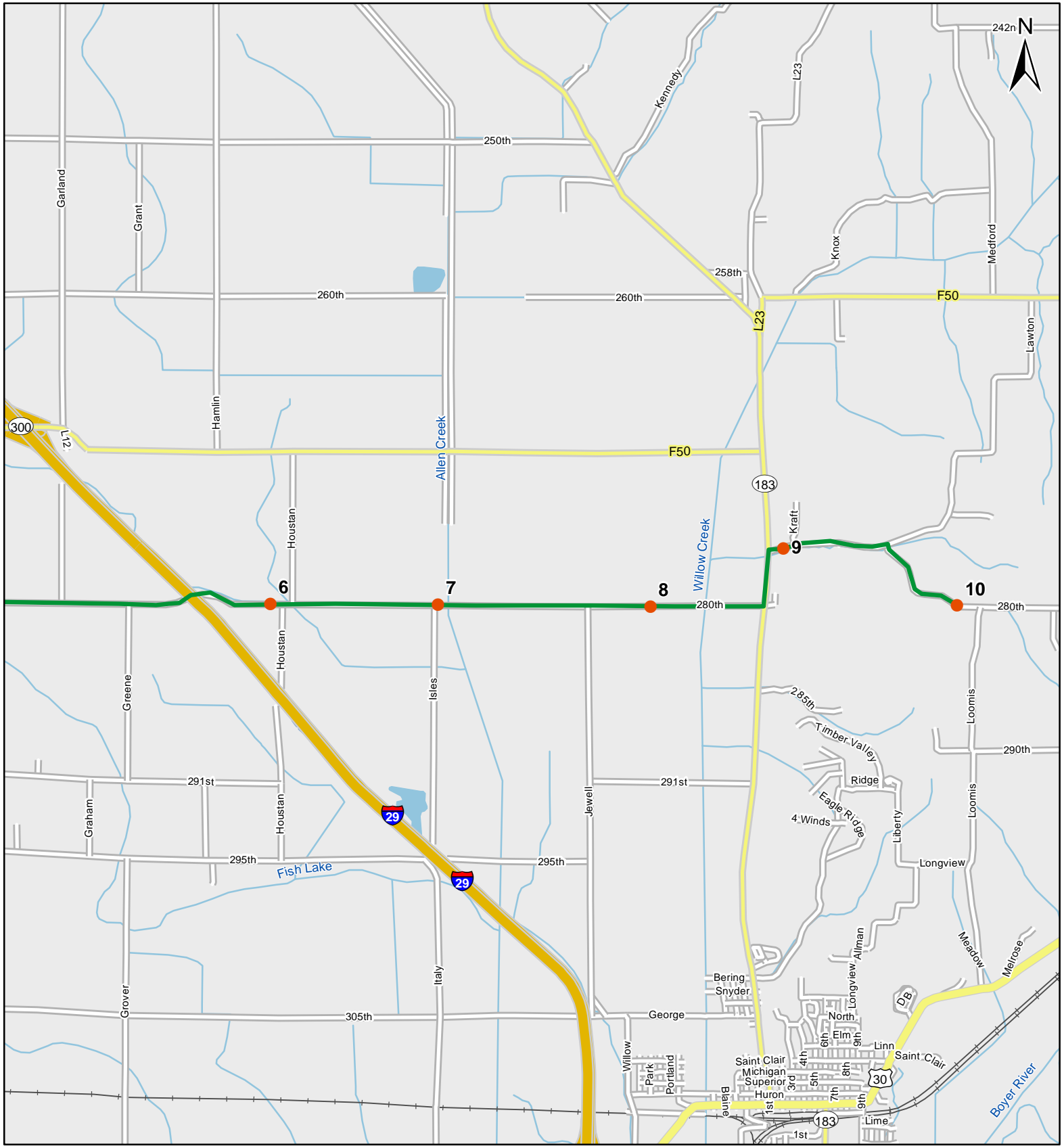


1:50,000

Legend

- Stop Locations
- Route Path

Route: 360114 Modale, IA



1:50,000

Legend

- Stop Locations
- Route Path



Frog and Toad Call Survey Route Description

Route ID **360114**

Established:

Site Number	Name	County	Latitude	Longitude	Directions
1	0.1	Harrison	41.6184006	-96.0670013	Start at intersection of Britt and 270th facing east. Drive 0.1 mile east. Stop at sign on left side of road. Creek with wet areas on right.
2	0.6	Harrison	41.6189995	-96.0568008	Go 0.5 miles east. Stop just before the 'curve in road' sign. Stagnant pool on right side of road.
3	1.2	Harrison	41.6186981	-96.0463028	Continue approximately 0.5 miles east. Stop where creek crosses under road.
4	0	Harrison	41.6044006	-96.0130997	Mileage counter starts over at intersection of K45 and 280th. Cattails in ditches all along K45 at this intersection.
5	0.5	Harrison	41.6035004	-96.0034027	Drive 0.5 miles east on 280th and cross over RR tracks. Stop at stream crossing under road.
6	2.9	Harrison	41.6034012	-95.9570007	Continue east. Cross over 29. Stop by very deep ditch filled with water on left side of road just before you get to Houston. Hwy 29 traffic did not seem overwhelming though it is fairly close...
7	4	Harrison	41.6032982	-95.935997	Continue east on 280th. Stop between Isles Ave. and Bridge.
8	5.4	Harrison	41.6030998	-95.9095001	Continue east on 280th. Stop by low area and deep ditch - looks like stream through field on left side. By field pull off.
9	6.8	Harrison	41.6085014	-95.8928986	Take a left on Loess Hills trail and then a right on Lawton trail. Stop 0.2 miles at creek running along right hand side of road.



Frog and Toad Call Survey Route Description

10

8.1

Harrison

41.6030998

-95.8712006

Fork right onto 280th. Stop in hillside where creek runs along the right side of the road in the woods.