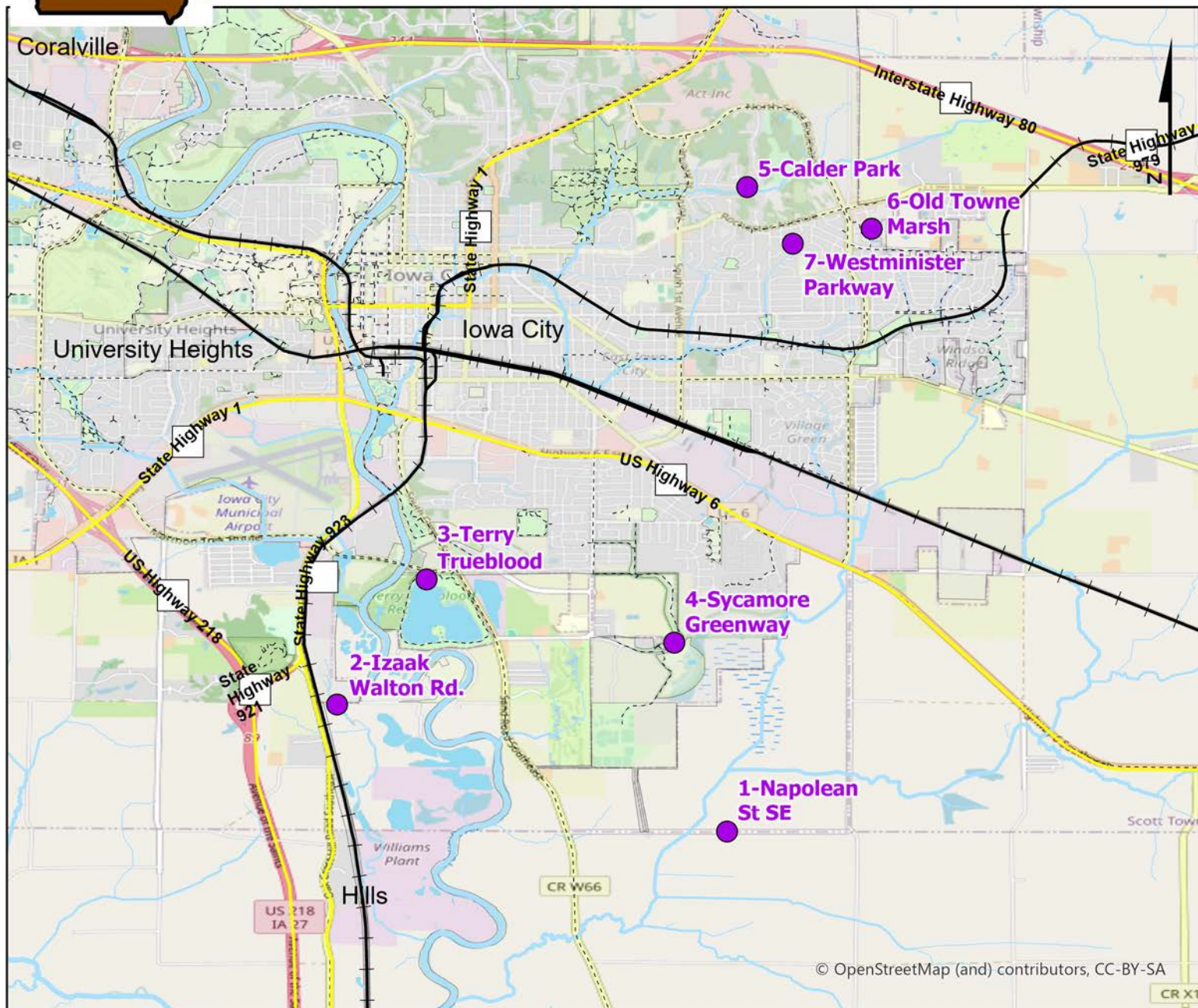


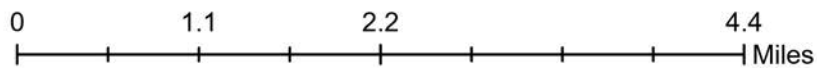
# Volunteer Wildlife Monitoring Program (VWMP) Frog and Toad Survey



Route ID: 314 County: Johnson

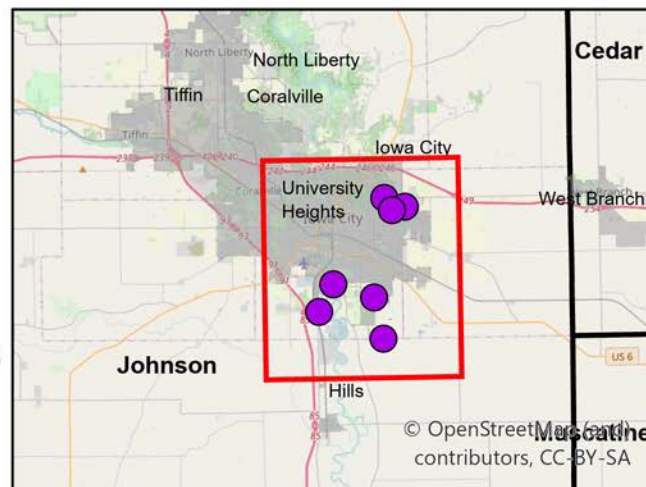


© OpenStreetMap (and) contributors, CC-BY-SA



## Legend

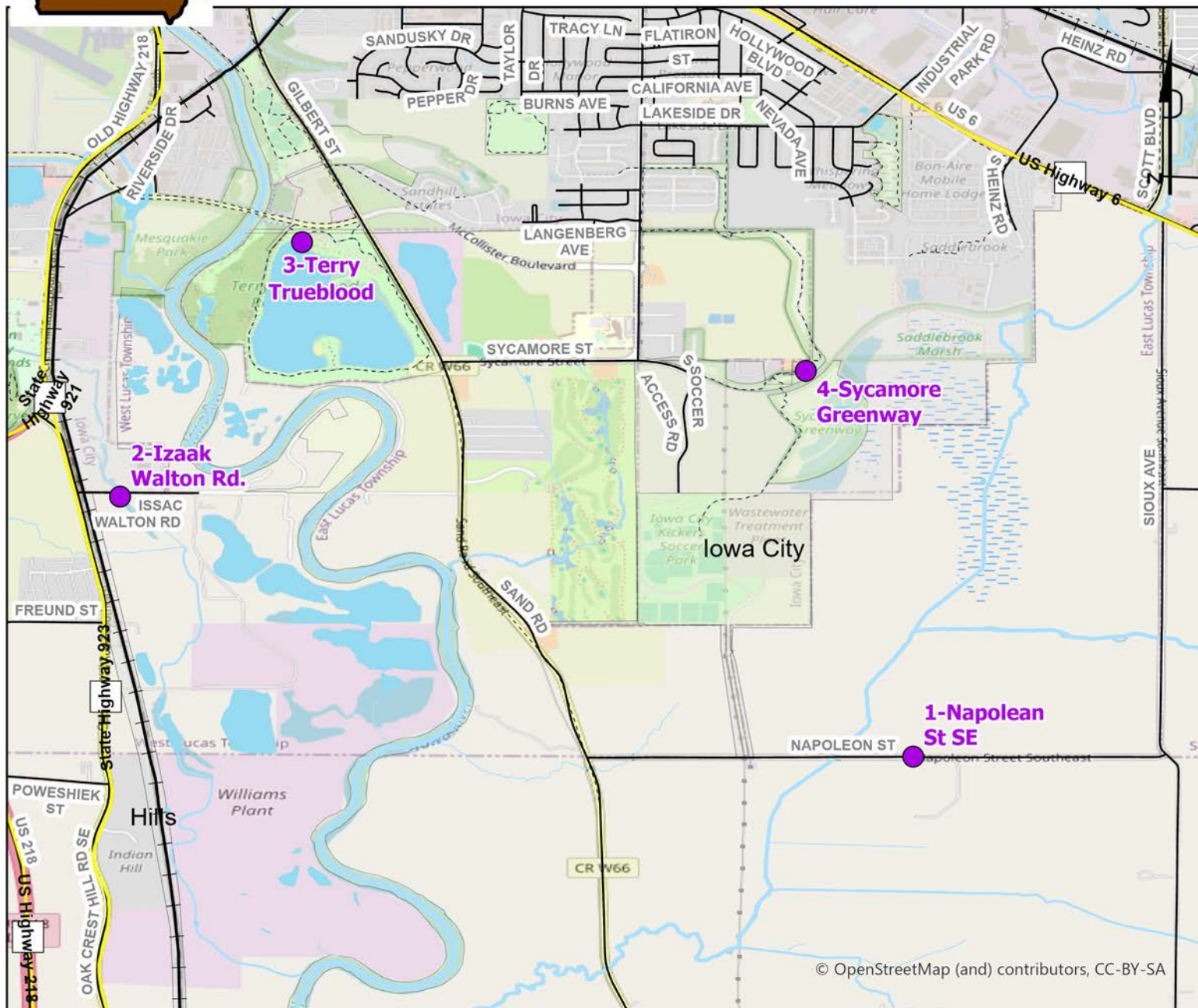
- Trails
- Survey Stops



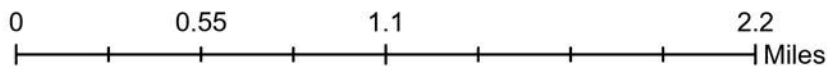
© OpenStreetMap (and) contributors, CC-BY-SA

# Volunteer Wildlife Monitoring Program (VWMP) Frog and Toad Survey

Route ID: 314 County: Johnson



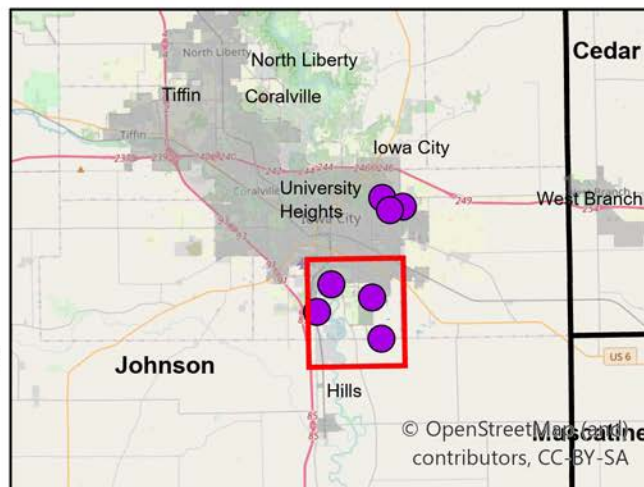
© OpenStreetMap (and) contributors, CC-BY-SA



**DNR**  
**Volunteer Wildlife Monitoring Program**

## Legend

- Trails
- Survey Stops

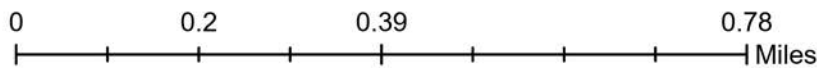
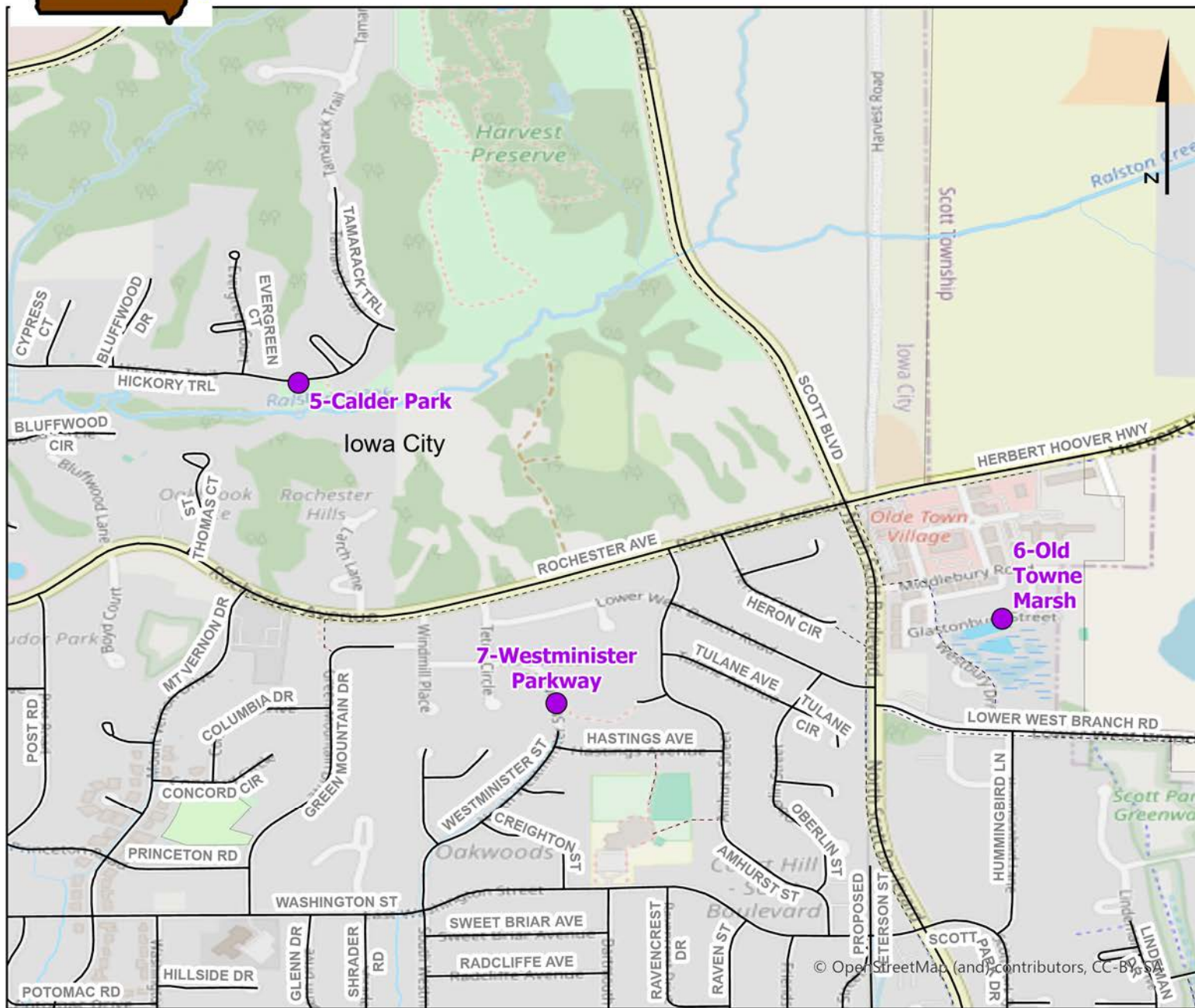


© OpenStreetMap (and) contributors, CC-BY-SA

# Volunteer Wildlife Monitoring Program (VWMP) Frog and Toad Survey

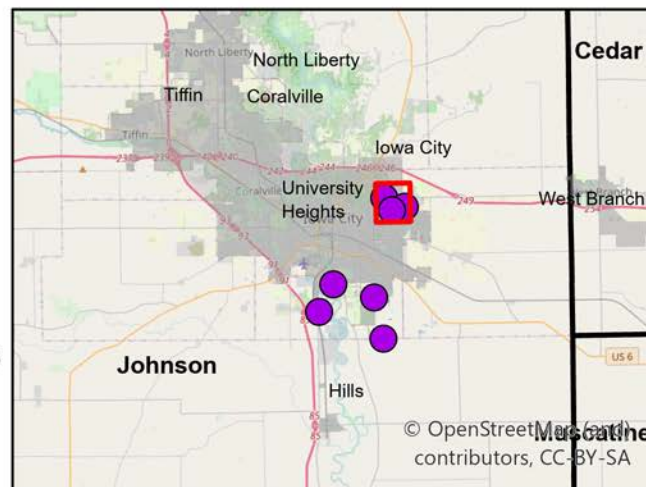


Route ID: 314 County: Johnson



## Legend

- Trails
- Survey Stops





# Frog and Toad Call Survey Route Description

Route ID **314**

Established: **2022**

Site Number	Name	County	Latitude	Longitude	Directions
1	Napolean St SE	Johnson	41.5985928	-91.4966839	Farm Pond north side of Napolean St. Pull over on side of gravel road.
2	Izaak Walton Rd.	Johnson	41.612959	-91.540549	Creek crosses Izaak Walton Road SE. West of County Material Corporation. Field pull off south side of road about a block from Oakcrest.
3	Terry Trueblood	Johnson	41.6270177	-91.530485	North End of Sand Lake City Park, at Terry Trueblood Rec Area. East end of the parking lot just that is just east of boat rampPermanent open water with nearby intermittent wet grassy areas.
4	Sycamore Greenway	Johnson	41.6199064	-91.5026222	Park in back of apartments. Walk along the sidewalk/bike trail behind apartments walk to first sign. On sycamore Trail, running parallel with Lehman Ave and east before the trail comes to a T-intersection
5	Calder Park	Johnson	41.671109	-91.494419	Bench near street at park. Ralston Creek runs through back of park
6	Old Towne Marsh	Johnson	41.666423	-91.480423	Water management area near housing development.
7	Westminster Parkway	Johnson	41.664743	-91.48929	Water management area. Park on street and walk on sidewalk into parkway