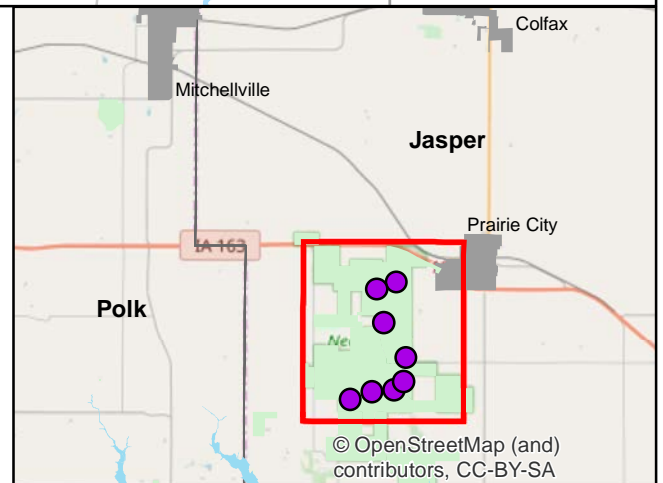
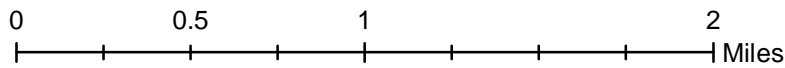
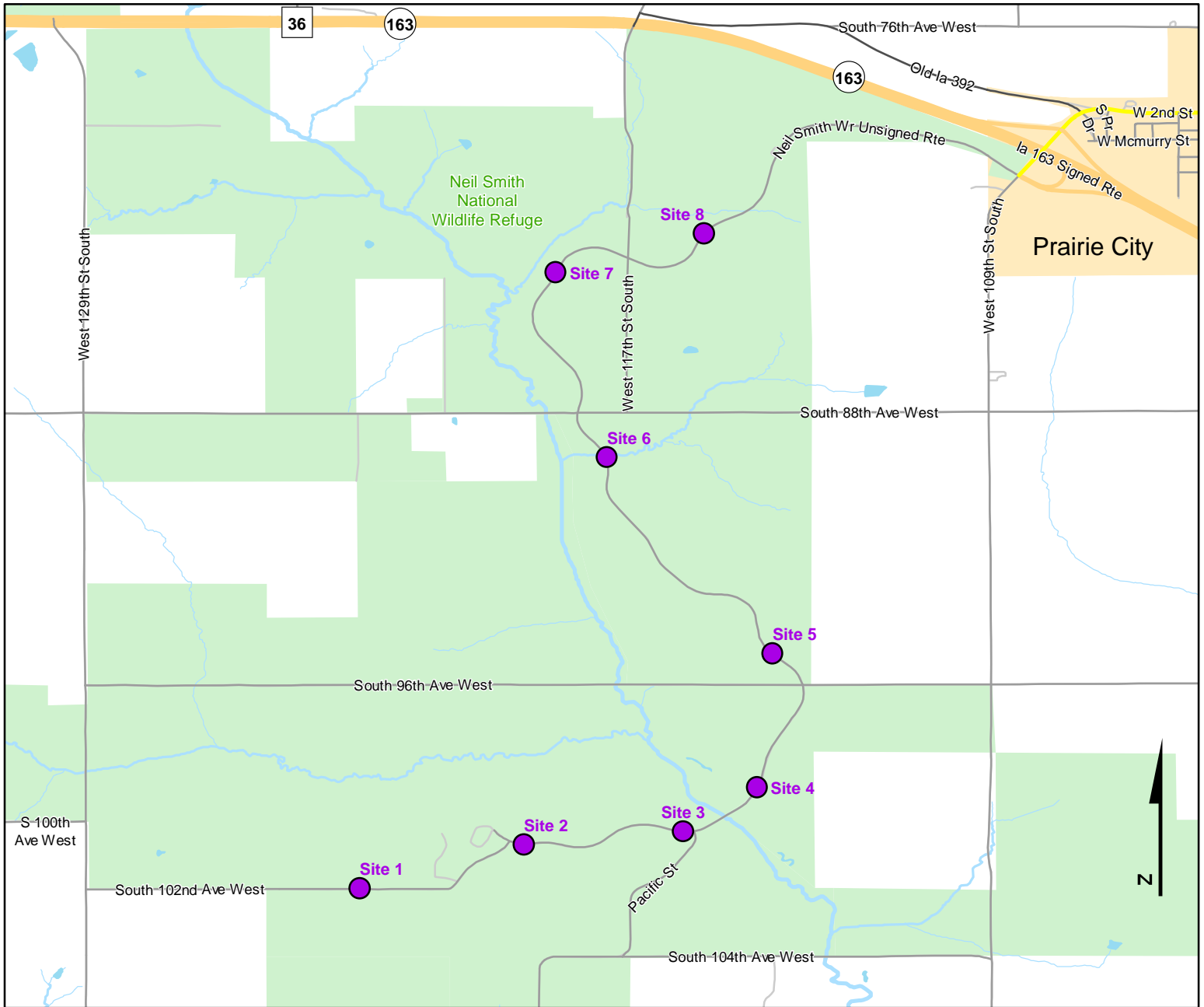




Volunteer Wildlife Monitoring Program (VWMP) Frog and Toad Survey

Route ID: 196 County: Jasper

Click for Google Maps to Site 1: <https://www.google.com/maps/dir/?api=1&destination=41.5551078524,-93.2868499903>



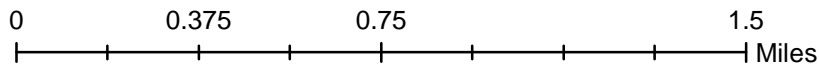
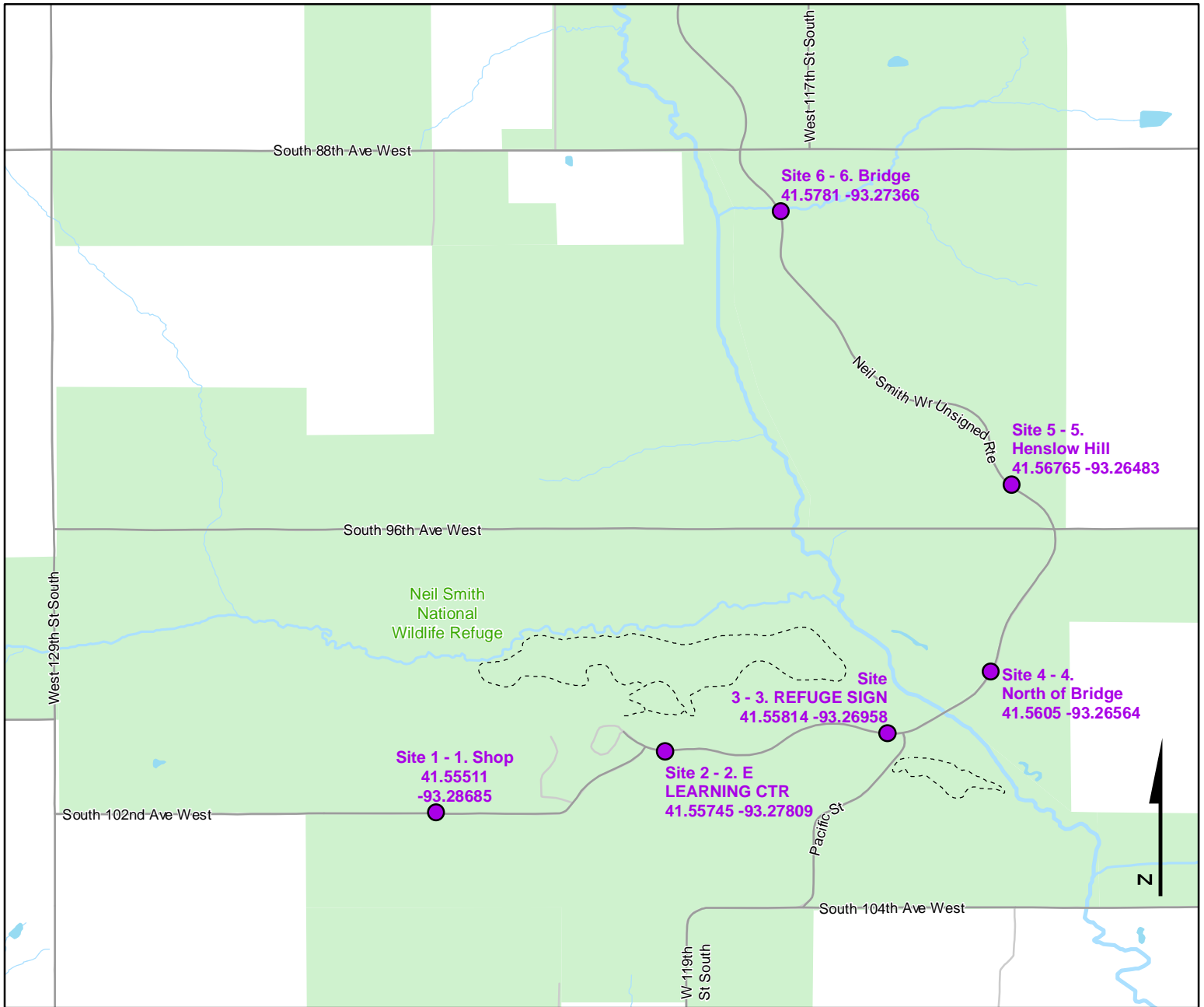
© OpenStreetMap (and contributors), CC-BY-SA



Volunteer Wildlife Monitoring Program (VWMP) Frog and Toad Survey

Route ID: 196 County: Jasper

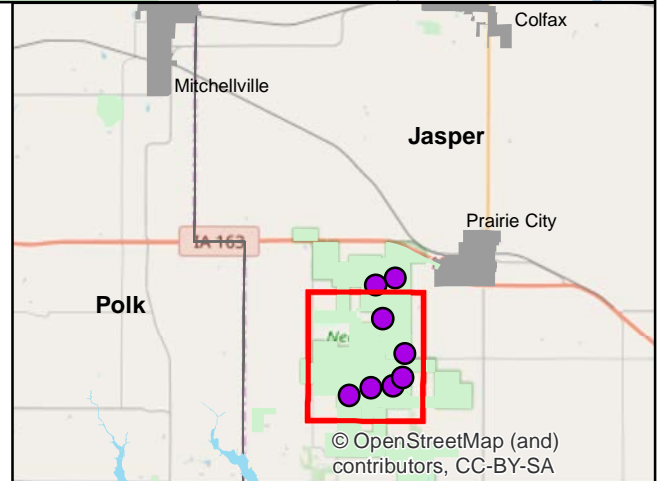
Click for Google Maps to Site 1: <https://www.google.com/maps/dir/?api=1&destination=41.5551078524,-93.2868499903>



DNR
**Volunteer
 Wildlife
 Monitoring
 Program**

Legend

----- Trails

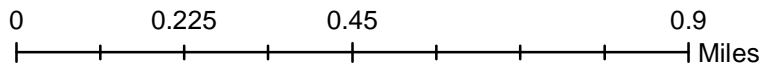
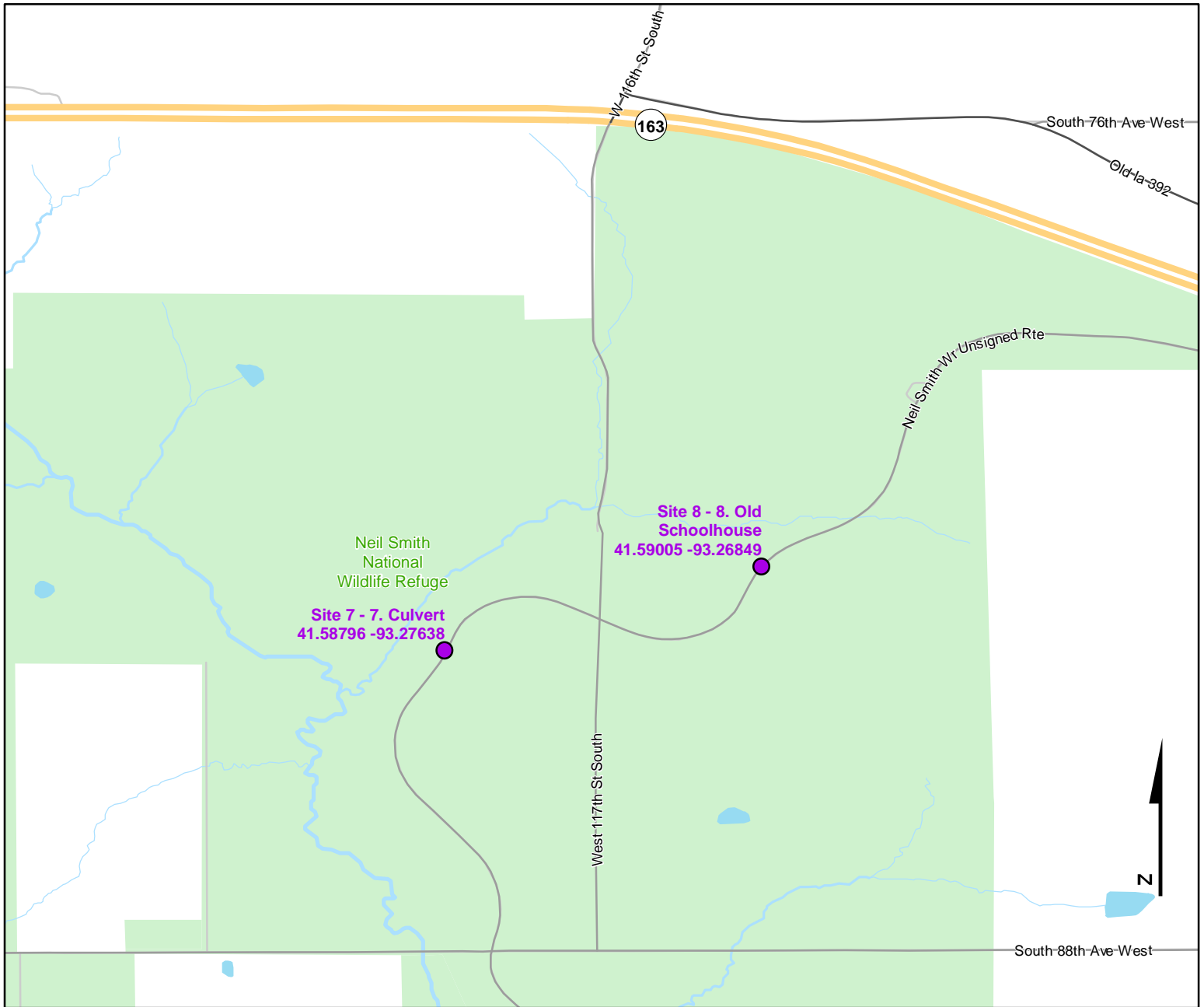




Volunteer Wildlife Monitoring Program (VWMP) Frog and Toad Survey

Route ID: 196 County: Jasper

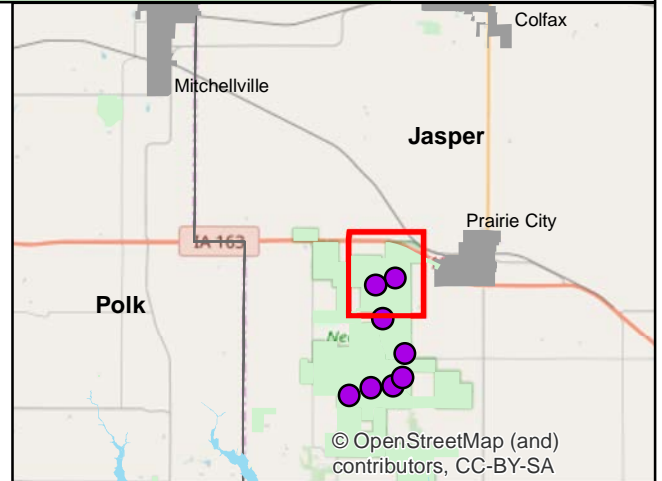
Click for Google Maps to Site 1: <https://www.google.com/maps/dir/?api=1&destination=41.5551078524,-93.2868499903>



Volunteer Wildlife Monitoring Program

Legend

----- Trails



© OpenStreetMap (and contributors), CC-BY-SA



Frog and Toad Call Survey Route Description

Route ID **196**

Established: 1998

Site Number	Name	County	Latitude	Longitude	Directions
1	1. Shop	Jasper	41.5551079	-93.28685	Just west of shop building off of 102nd Ave
2	2. E LEARNING CTR	Jasper	41.5574533	-93.2780942	East of Learning Center and south of black top road, next to road sign
3	3. REFUGE SIGN	Jasper	41.5581401	-93.2695828	Close to intersection of Pacific St and 117th St South. 1/2 mile north of main entrance to Learning Center at refuge sign, west side of road.
4	4. North of Bridge	Jasper	41.5605002	-93.265635	North of Walnut Creek bridge on Pacific St
5	5. Henslow Hill	Jasper	41.5676539	-93.2648248	Drainage under road north of stop sign before road curves to right
6	6. Bridge	Jasper	41.5780997	-93.2736604	Tributary of Coneflower
7	7. Culvert	Jasper	41.5879652	-93.2763775	35 mph sign facing north
8	8. Old Schoolhouse	Jasper	41.5900466	-93.2684917	At drainage from old schoolhouse NW into NE entry point