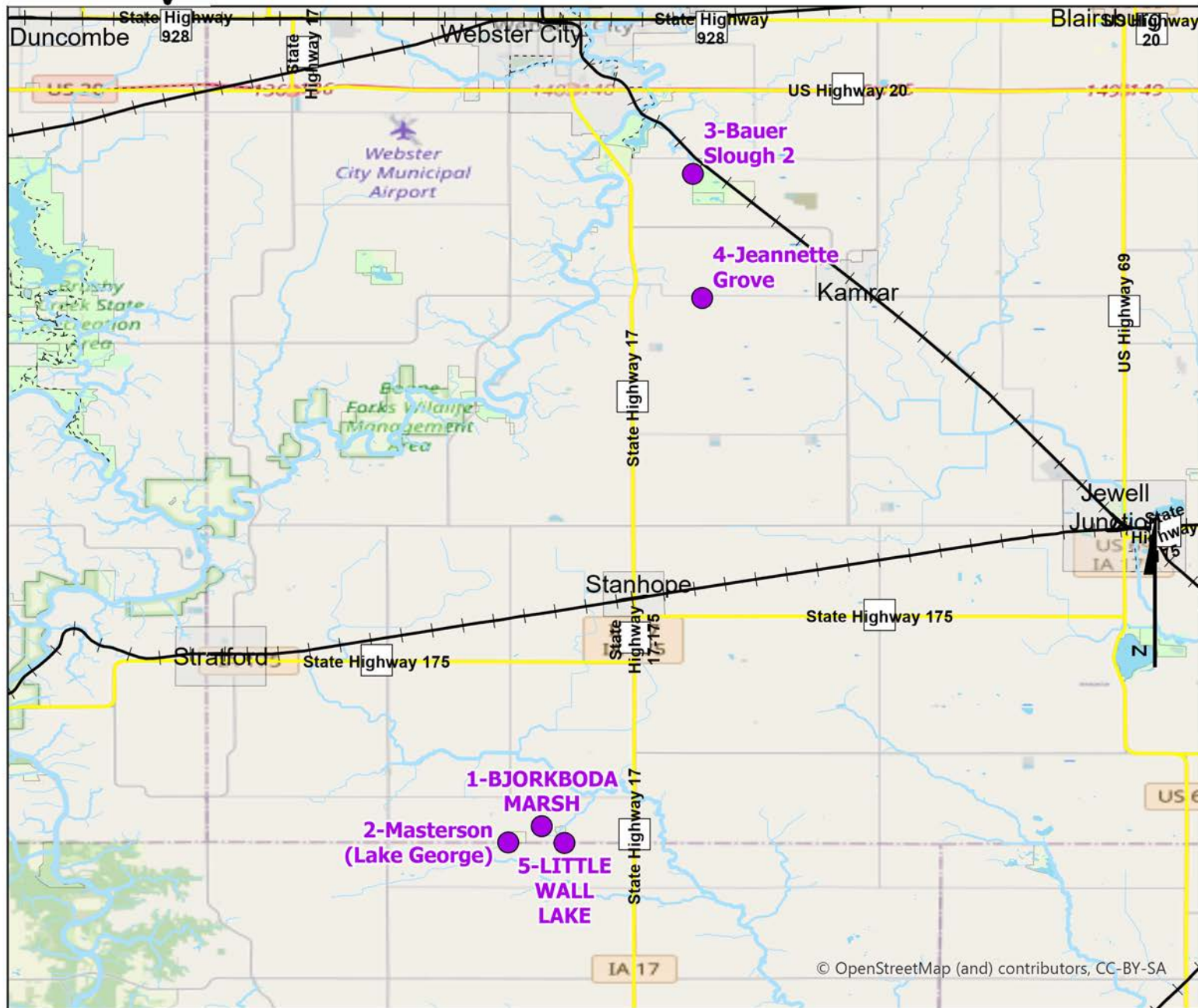
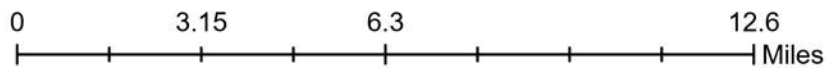


# Volunteer Wildlife Monitoring Program (VWMP) Frog and Toad Survey

Route ID: 128 County: Hamilton



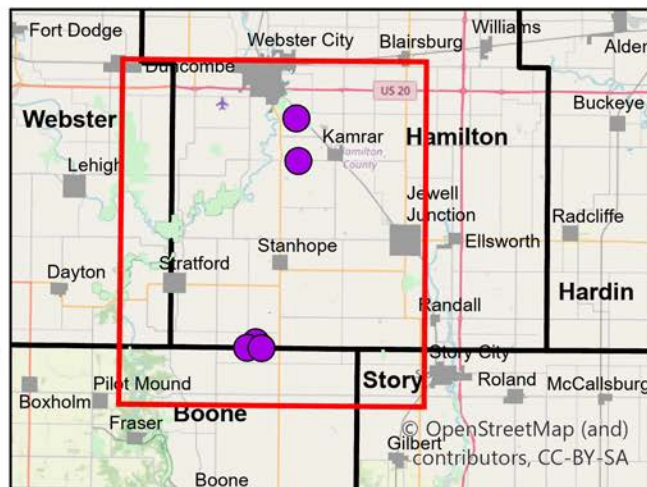
© OpenStreetMap (and) contributors, CC-BY-SA



## Legend

----- Trails

● Survey Stops

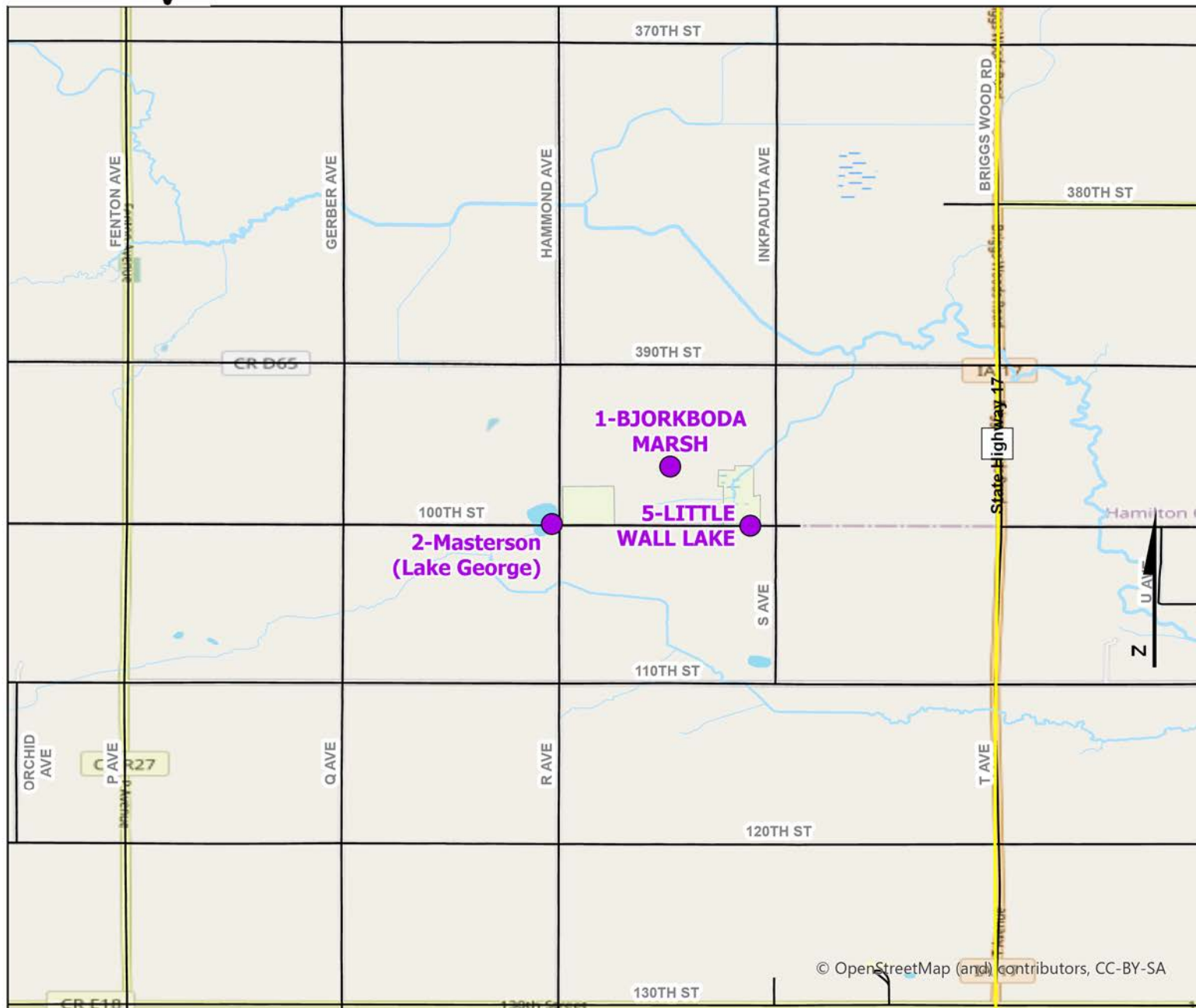


© OpenStreetMap (and) contributors, CC-BY-SA

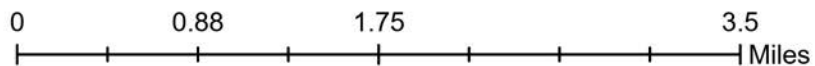
# Volunteer Wildlife Monitoring Program (VWMP) Frog and Toad Survey



Route ID: 128 County: Hamilton

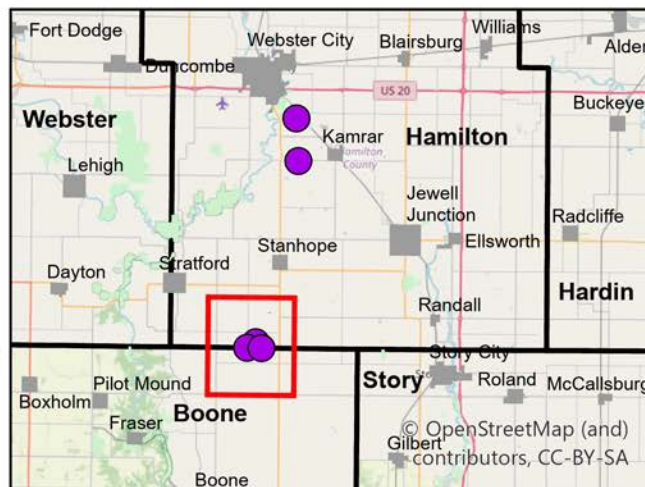


© OpenStreetMap (and) contributors, CC-BY-SA



## Legend

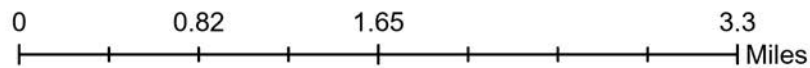
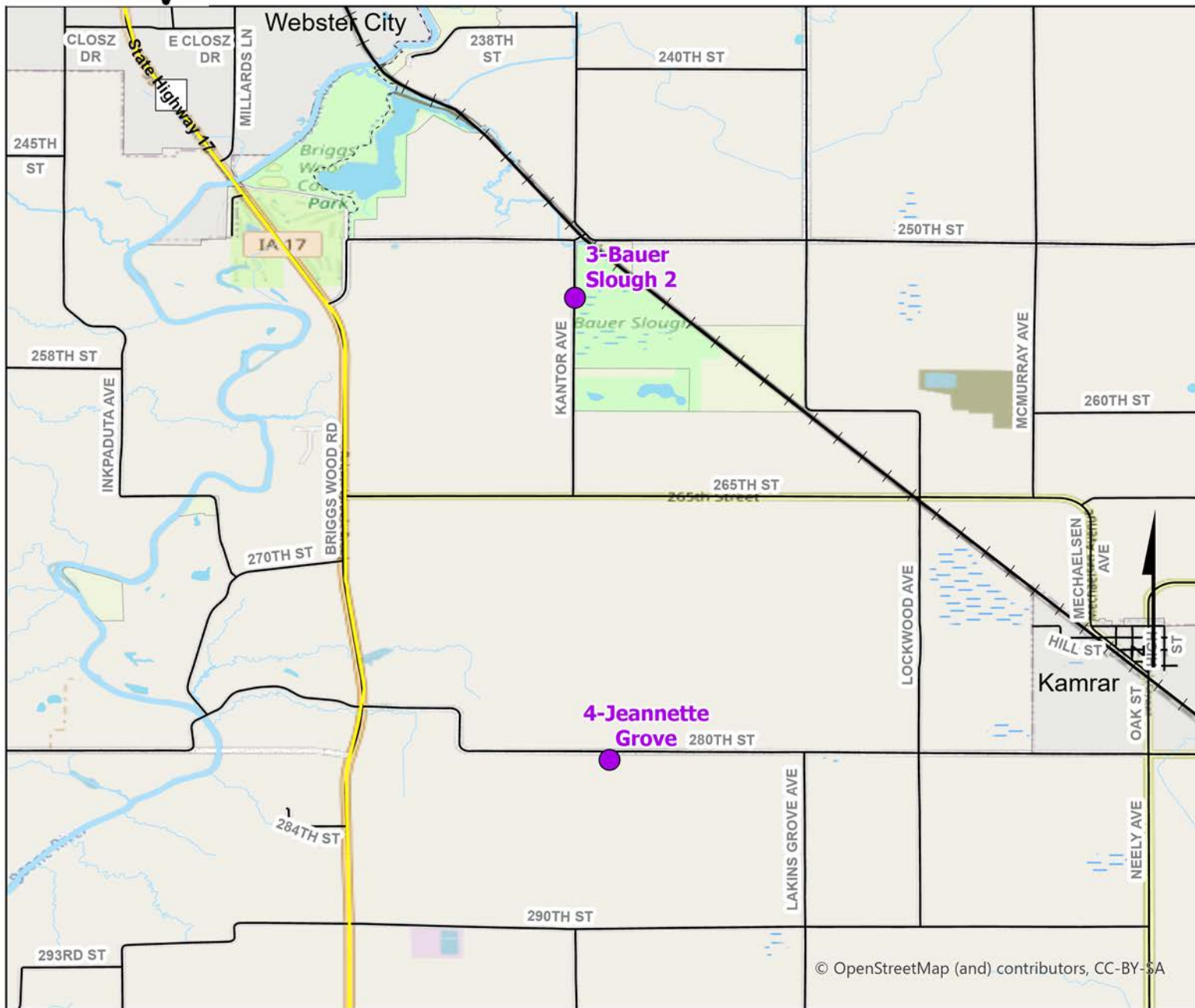
- Trails
- Survey Stops



# Volunteer Wildlife Monitoring Program (VWMP) Frog and Toad Survey

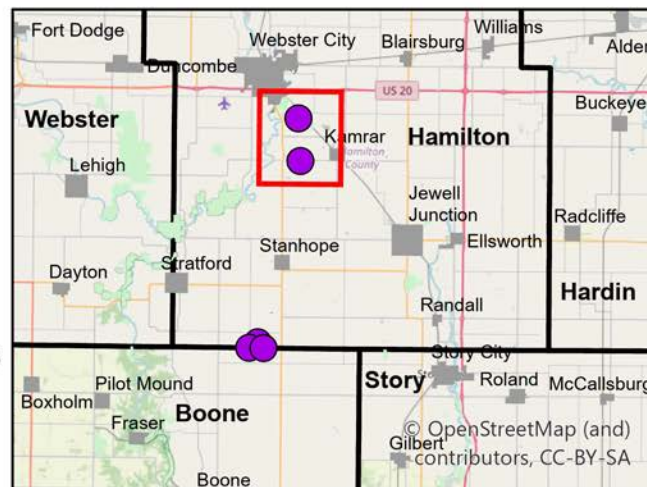


Route ID: 128 County: Hamilton



## Legend

- Trails
- Survey Stops





# Frog and Toad Call Survey Route Description

Route ID: 128

Established: 1994

Site Number	Name	County	Latitude	Longitude	Directions
1	BJORKBODA MARSH	Hamilton	42.2149101	-93.8252376	Listening point is on the observation tower at Bjorkboda Marsh
2	Masterson (Lake George)	Boone	42.2097489	-93.8358917	
3	Bauer Slough 2	Hamilton	42.422336	-93.777179	At Private drive 2525 and Kantor
4	Jeannette Grove	Hamilton	42.3829195	-93.7742292	
5	LITTLE WALL LAKE	Hamilton	42.2095985	-93.818033	Little Wall Lake County Park and Campground. Follow the road through the campground until you get to trail entrance.