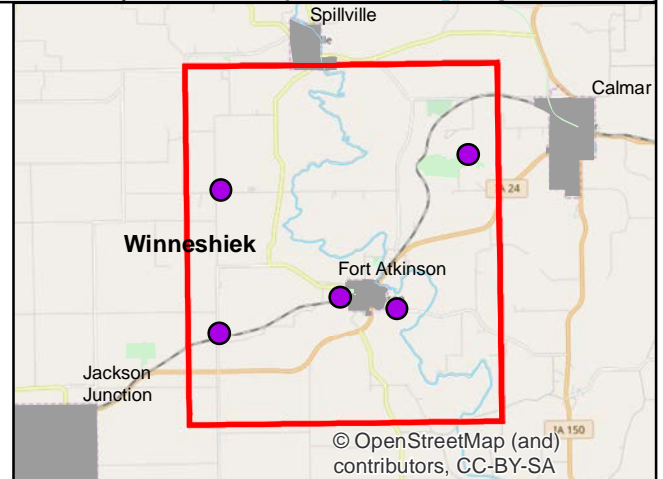
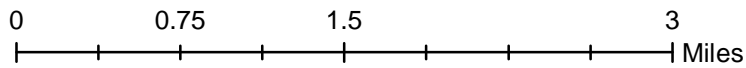
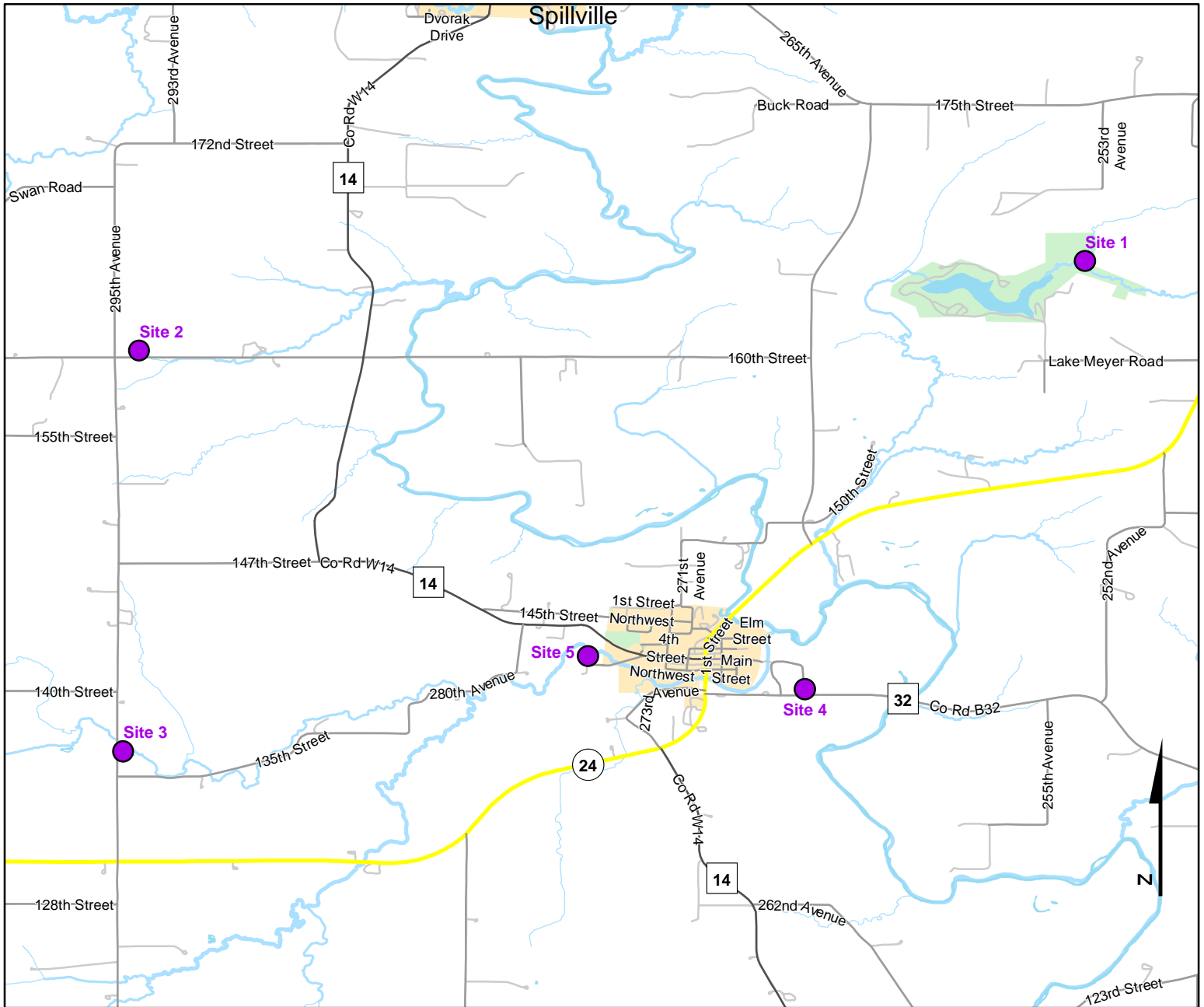




Volunteer Wildlife Monitoring Program (VWMP) Frog and Toad Survey

Route ID: 101 County: Winneshiek

Click for Google Maps to Site 1: <https://www.google.com/maps/dir/?api=1&destination=43.1772305781,-91.9004850354>



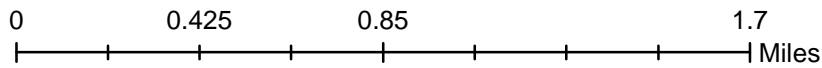
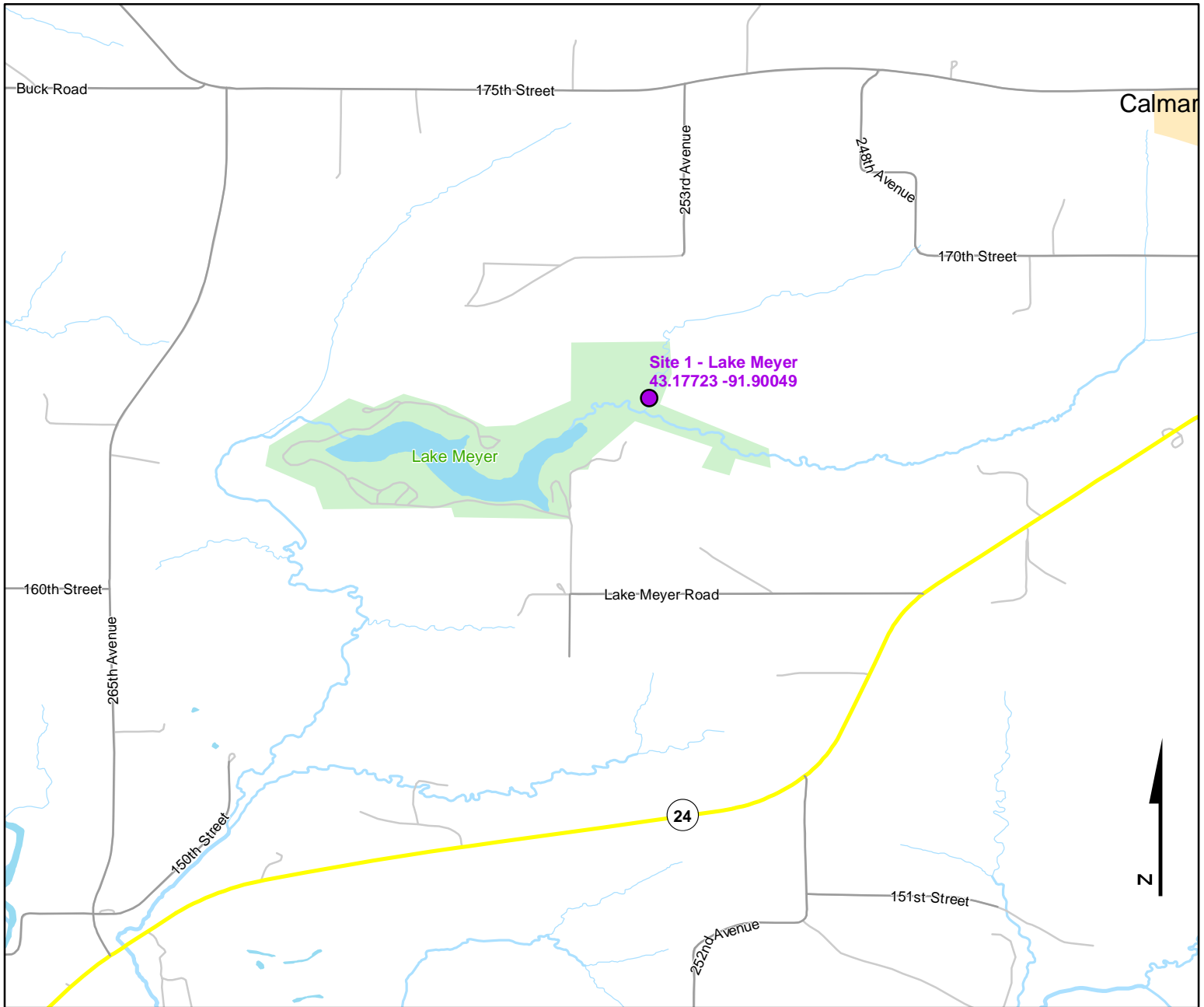
© OpenStreetMap (and) contributors, CC-BY-SA



Volunteer Wildlife Monitoring Program (VWMP) Frog and Toad Survey

Route ID: 101 County: Winneshiek

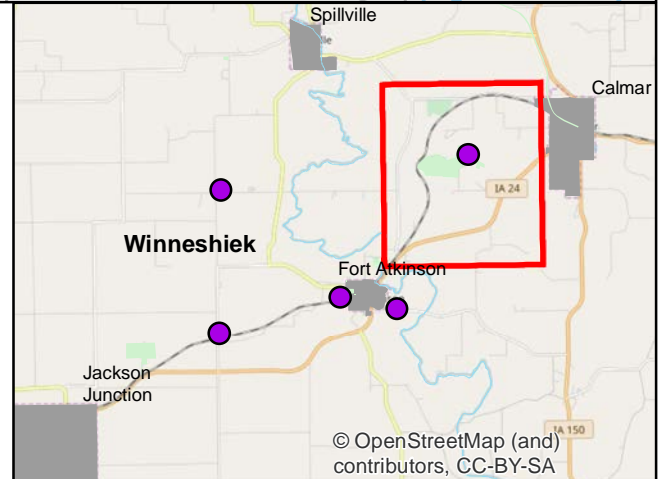
Click for Google Maps to Site 1: <https://www.google.com/maps/dir/?api=1&destination=43.1772305781,-91.9004850354>



DNR
**Volunteer
 Wildlife
 Monitoring
 Program**

Legend

----- Trails

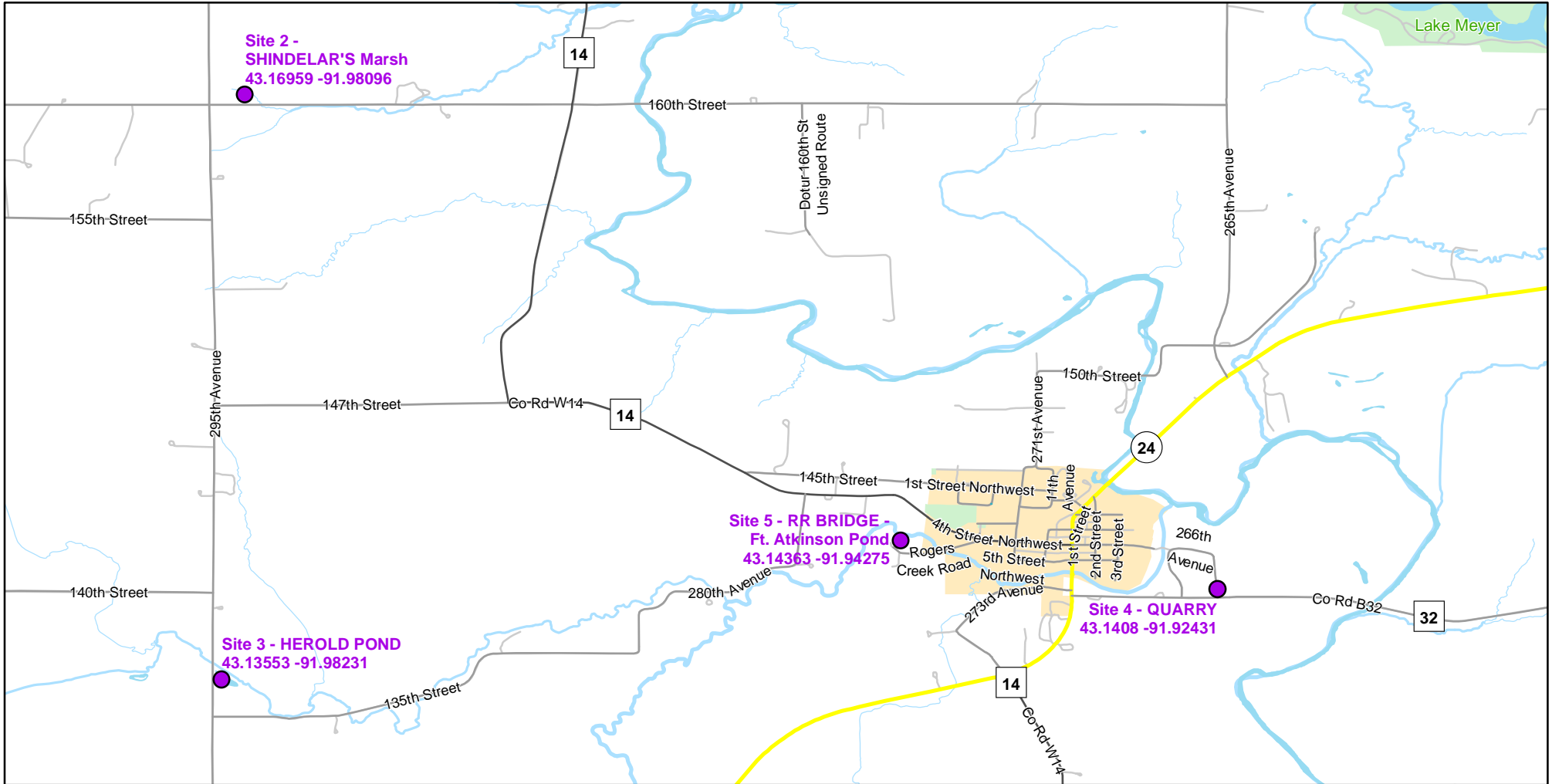




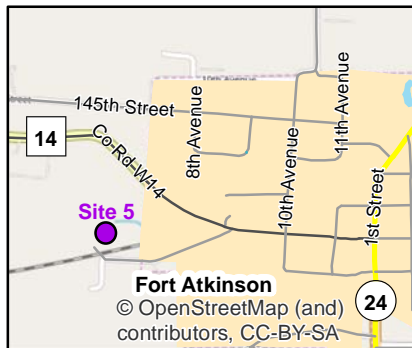
Volunteer Wildlife Monitoring Program (VWMP) Frog

Route ID: 101 County: Winneshiek

Click for Google Maps to Site 1: <https://www.google.com/maps/dir/?api=1&destination=43.1772305781,-91.9004850354>

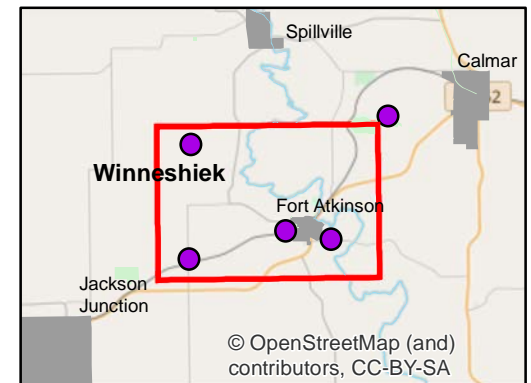
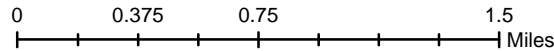


Enlarged View of Site 5



Legend

----- Trails





Frog and Toad Call Survey Route Description

Route ID **101**

Established: 1993

Site Number	Name	County	Latitude	Longitude	Directions
1	Lake Meyer	Winneshiek	43.1772306	-91.900485	Lake Meyer Park in the marshy area of the headwaters along the nature trail crossing the stream feeding the lake
2	SHINDELAR'S Marsh	Winneshiek	43.1695923	-91.980957	1 mile west of W14 and 1 mile north of the turn on W14 into Ft. Atkinson. Marsh is on north side of road
3	HEROLD POND	Winneshiek	43.1355303	-91.9823097	3/4 of a mile north of hwy 24, 2 mile west of Ft. Atkinson, on east side of county blacktop at pond just SE of bridge crossing
4	QUARRY	Winneshiek	43.1407988	-91.9243051	0.25 mile east of Ft. Atkinson on Blacktop B32 in abandoned quarry, north side of road.
5	RR BRIDGE - Ft. Atkinson Pond	Winneshiek	43.1436271	-91.9427505	West edge of Ft. Atkinson along W14, on south side of road in a pond at RR bridge crossing gravel road nearby.



Frog and Toad Call Survey Route Description
