

Waterfowl Management, Seasons, and Harvests in Iowa

Duck Breeding Populations

Breeding population estimates are made each year for 10 key species of ducks in the principal breeding areas of Alaska, Canada, and the northcentral United States (Table 4.1, Figure 4.1). Surveys are conducted in May and early June by the U.S. Fish and Wildlife Service (USFWS), Canadian Wildlife Service, and provincial and state conservation agencies. Ducks are counted from fixed-wing aircraft on the same transects each year. Estimates of ducks and ponds seen from the air are corrected for visibility bias by conducting ground counts on a sample of transects. The estimates in Table 4.1 are not the entire continental breeding populations of ducks; a portion of each population (potentially 25% for mallards) nests outside the surveyed areas.

Many surveys did not occur in 2020 and 2021 due to the Covid-19 pandemic. This created an unprecedented situation where population estimates were unavailable for many species. At the same time, the northern prairies experienced a significant drought, which negatively impacted wetland habitat throughout north-central North America. Fortunately, the northern prairies received significant precipitation and surveys resumed in 2022.

Duck populations have fluctuated substantially over time. The drought of the 1980s pushed many populations to near record low levels. The resiliency of these birds, however, was dramatically illustrated when most populations rebounded after water returned to the prairies in the 1990s. Pintails and scaup were exceptions to this rule; pintails because contemporary agricultural practices limit their nest success in prairie Canada and scaup for reasons apparently related to nutritional deficiencies on migration habitats. Duck populations will continue to fluctuate in the future as the numbers of wetlands on the landscape in north-central North America rise and fall with changes in the weather.

Iowa's Canada Goose Population

Temperate breeding Canada geese nested throughout Iowa prior to European settlement, but were extirpated from most of the Midwest, including Iowa, by 1900. The Canada goose restoration program initiated by the Iowa Conservation Commission in 1964, the forerunner to the Iowa Department of Natural Resources (DNR), has successfully restored this species to most of its former nesting range in Iowa (see Giant Canada Goose Restoration). Iowa's Canada goose population exhibited steady growth during 1965-2010, declined during 2011-2013, but has recovered since (Figure 4.2). Each summer, DNR staff estimate the numbers of adult Canada geese and goslings in their wildlife units. To obtain a statistically valid estimate of this population, an aerial survey is also conducted each spring. The results of an aerial survey conducted during April 2022 indicated the population was 74,457 (95% CI = 60,635, 88,279).

Waterfowl Harvests

Waterfowl harvests and hunter activity in Iowa are estimated annually by the USFWS (Table 4.2). Harvest estimates are calculated by combining the results of 2 surveys: 1) a survey of randomly selected hunters from the Harvest Information Program (HIP), which is used to calculate the total number of waterfowl killed, and 2) a survey that solicits duck wings and goose tails, which is used to estimate the species composition of the harvest.

Iowa's duck harvests have fluctuated substantially since 1961. The lowest harvests of all ducks and mallards occurred in the early 1960s, years with low duck populations and restrictive hunting regulations. The highest duck harvest was in 1979, a year with good duck numbers and, perhaps more importantly, excellent habitat conditions in Iowa due to above normal rainfall in August and September. Duck harvests began to decline in 1985, bottoming out in 1988 and 1989. Reasons for reduced harvests included smaller breeding populations and fall flights, shorter seasons, reduced bag limits, fewer hunters, and poor local habitat conditions. Duck harvests have increased in recent years as a result of improvements in duck numbers, liberal hunting regulations, and increases in numbers of active hunters.

The addition of an experimental Special September Teal season in 2014-2023 allowed Iowa's additional opportunity to hunt teal. Blue-winged teal harvest increased during 2014 and 2015. However, total duck harvest has declined since the implementation of the teal season, particularly for wood ducks and mallards.

Iowa's Canada goose harvest was relatively constant during 1967-85, but began to increase in 1986 as a result of increasing numbers of local giant Canada geese (Table 4.2). Canada goose harvests increased substantially after 1988,

but were dampened in 1993 when restrictive Canada goose hunting regulations were implemented to reduce the harvest of Eastern Prairie Population (EPP) Canada geese. EPP geese nest on the west coast of Hudson Bay and are one of the two principle migrant Canada goose populations that fly through Iowa (the other consists of small Canada geese, commonly called “cacklers” or “hutchies,” that nest on Baffin Island in the Arctic). The floods of 1993 may have also contributed to the decrease in the Canada goose harvest that year. Canada goose harvests resumed their increasing trend in the mid 1990s, and peaked at 78,600 in 2005. The apparent drop in harvest in 1998 and 1999 may be an artifact of how the estimates were calculated rather than an actual change in harvest. At that time, the USFWS was converting from the old waterfowl stamp survey methodology to the new Harvest Information Program (HIP) survey. Harvest numbers from 1999 to the present are HIP estimates. Canada goose harvest during 2015-2019 is the first period where Iowa’s estimated Canada goose harvest was higher than the estimated mallard harvest.

The snow goose harvest in Iowa has declined since the early 1970s, despite record high numbers of snow geese in the Flyway in the 1990s and 2000s. Declining harvests resulted from shifting snow goose migration patterns, later migrations, increased use of refuges, and large numbers of older geese in the population. By the mid 1990s, the mid-continent light goose population was severely damaging Arctic breeding habitats. To increase harvests of light geese, more liberal hunting regulations were implemented (liberal bag limits, 107-day seasons) and a conservation order was implemented in 1999 to permit taking light geese after March 10 and to allow for hunting beyond the 107-day limit imposed by the Migratory Bird Treaty with Canada and Mexico. The harvest during the conservation order period in Iowa has ranged from 8,200 to 56,830 during 1999-2020. During the 1998-2020 regular light goose seasons, the harvest ranged from 0 to 15,000.

Waterfowl Seasons

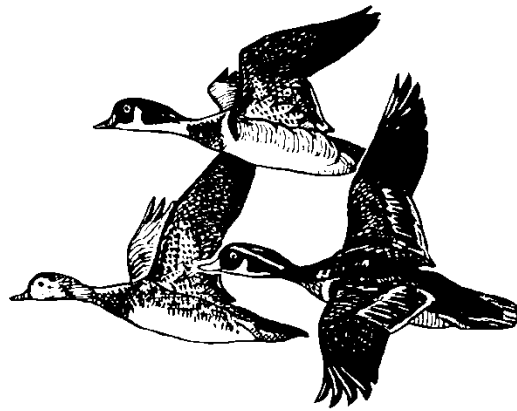
Iowa waterfowl hunters have experienced a wide range of duck and goose seasons since the USFWS began regulating waterfowl hunting in 1918 (Table 4.3 and Table 4.4). Nearly every conceivable season-date combination has been tried in the past 90 years. Duck hunting regulations are inherently complex because they involve many species. The general lack of consistency in regulations, however, has made interpretation of the effects of these regulations on duck harvests very difficult. Goose hunting regulations, on the other hand, have been less complex and more consistent. The relative secure goose breeding habitat, along with consistently conservative seasons and bag limits, have enabled goose populations to prosper. The growth of temperate-breeding Canada goose population, however, has complicated traditional Canada goose harvest management. It is particularly challenging to develop hunting regulations that will increase harvests of local Canada geese while limiting harvests of migrant geese from Arctic and sub-Arctic regions.

Waterfowl Banding

Ducks and geese are captured and marked with leg bands to obtain information on survival rates, hunting mortality, migration patterns and timing, and the relationships of harvest areas to production areas. Banding is conducted at the request of the USFWS and the Mississippi Flyway Council (MFC). Both state and federal personnel band ducks in Iowa, but DNR personnel band all the Canada geese and more than 95% of the wood ducks (Table 4.5). Nearly 300,000 ducks and geese have been banded by DNR personnel since 1964.

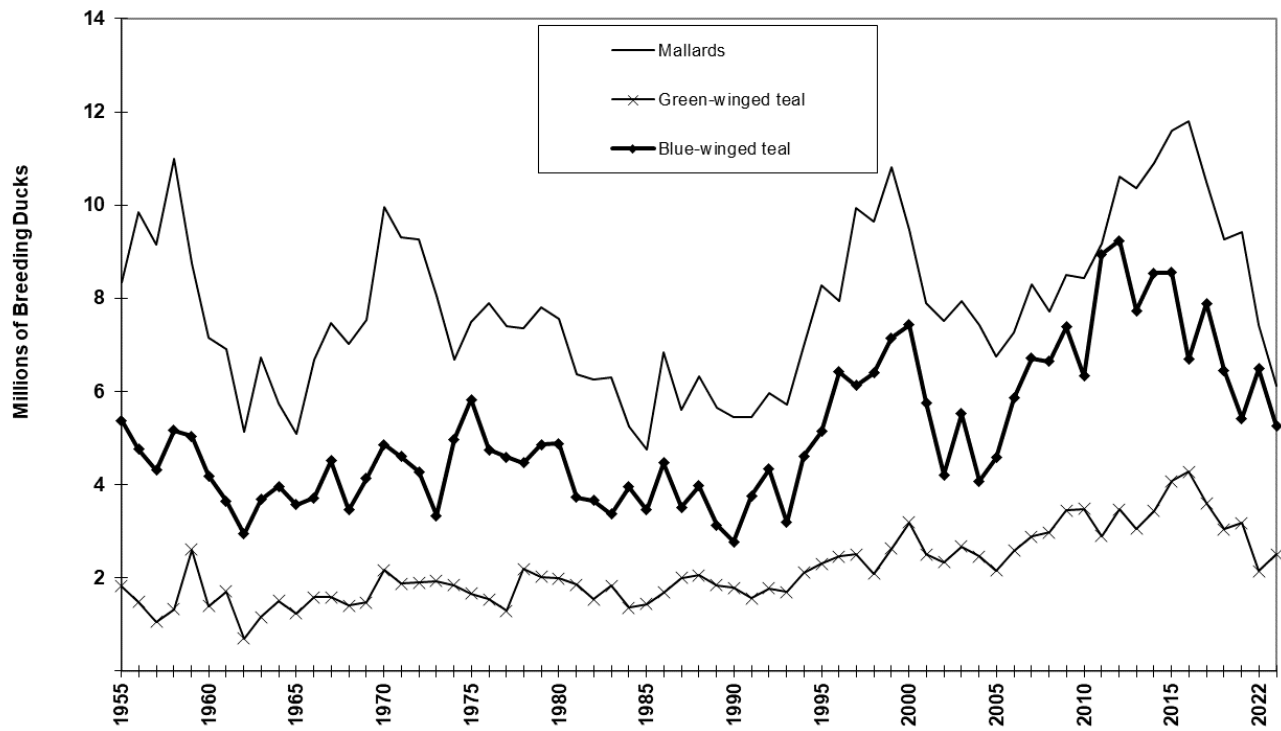
The USFWS, in concert with the MFC, determines banding priorities. In the 1960s emphasis was placed on banding blue-winged teal to evaluate special teal seasons. Winter mallard banding was conducted in the 1970s to supplement breeding grounds bandings and examine hen mortality during spring and summer. Wood duck bandings were used to evaluate Iowa's September duck seasons. Wood duck bandings are also important to measure the effects of hunting on wood duck populations, an aspect that has been particularly important since 2008 when the wood duck bag limit was increased from 2 to 3 birds per day.

Canada goose banding has increased with the growth of the local Canada goose population in Iowa. Migrant Canada geese have also been banded as part of cooperative projects with the MFC. Canada goose banding will be increasingly important as the Mississippi Flyway, USFWS and state conservation agencies attempt to balance harvest of abundant temperate breeding Canada goose populations and migrant Canada goose populations, which have been stable or decreasing.



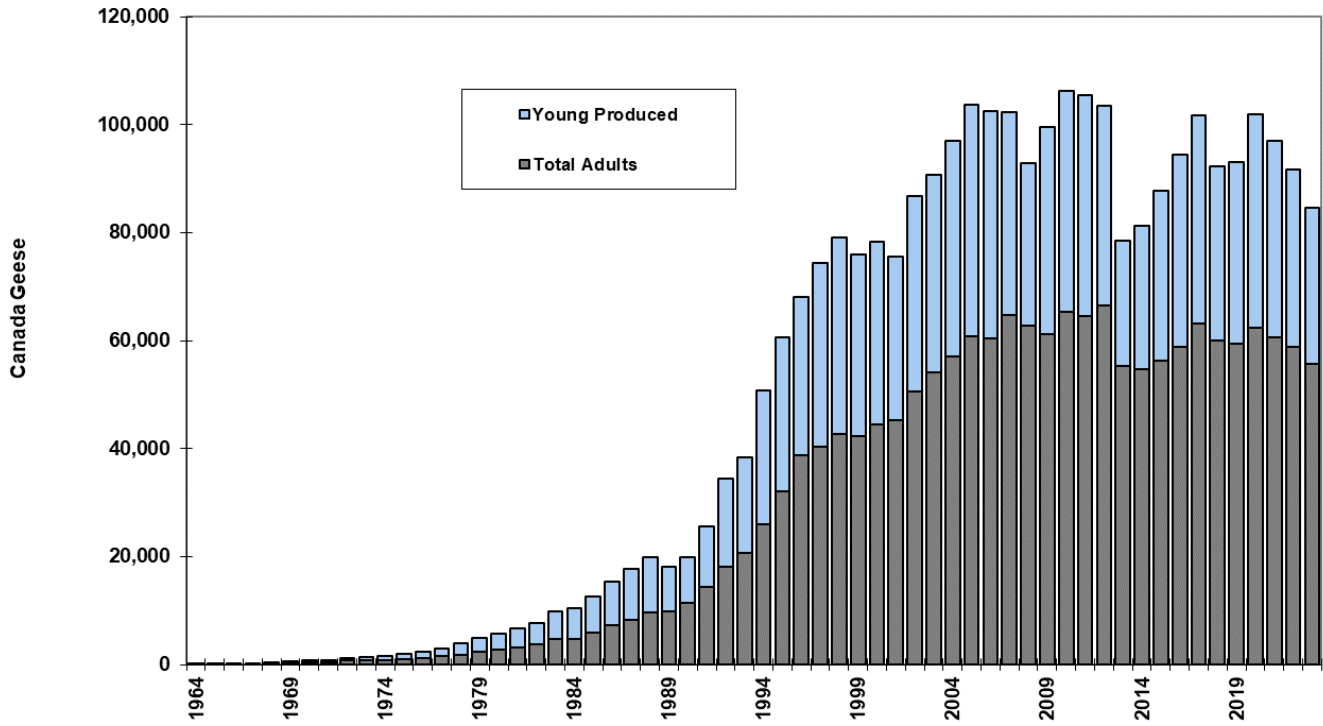
Figures

Figure 4.1 Breeding populations of ducks important to Iowa.



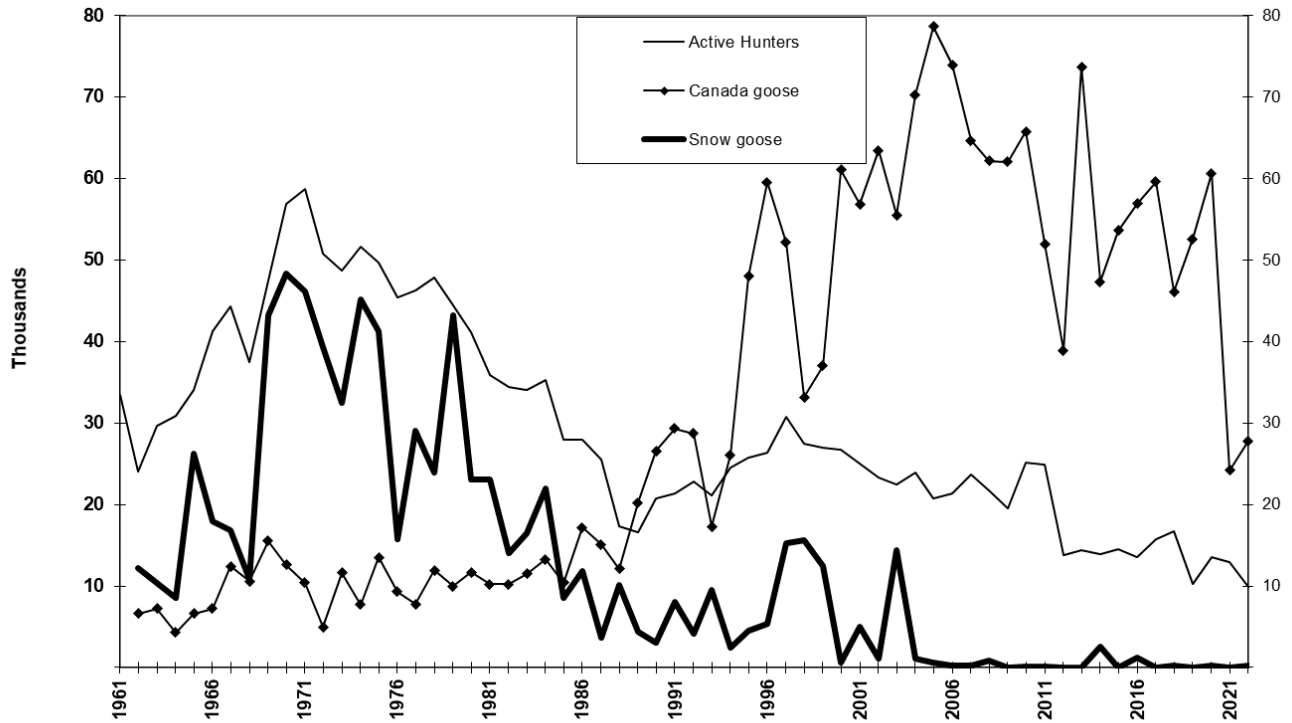
Source: USFWS

Figure 4.2 Iowa's Canada goose population.



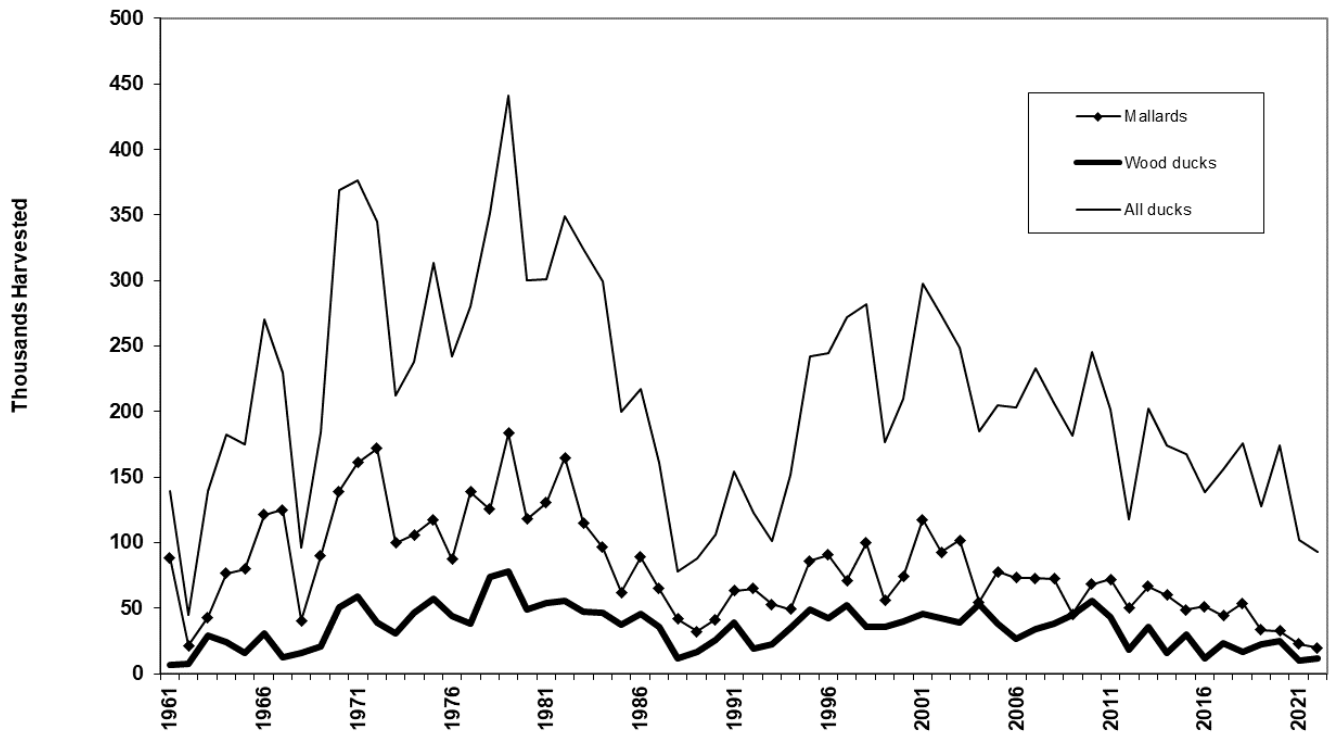
Source: Iowa DNR

Figure 4.3 Goose harvests in Iowa.



Source: USFWS

Figure 4.4 Duck harvests in Iowa.



Source: USFWS

Tables

Table 4.1 Breeding population estimates for 10 species of ducks (in thousands) in the traditional survey region in North America. (Source: USFWS)

| Year | Mallard | Gadwall | American Wigeon | Green Winged Teal | Blue Winged Teal | Northern Shoveler | Northern Pintail | Red-Head | Canvas Back | Scaup |
|------|---------|---------|-----------------|-------------------|------------------|-------------------|------------------|----------|-------------|-------|
| 1955 | 8,356 | 663 | 3,067 | 1,823 | 5,381 | 1,571 | 9,387 | 572 | 599 | 5,609 |
| 1956 | 9,842 | 783 | 3,118 | 1,480 | 4,763 | 1,630 | 9,897 | 755 | 696 | 5,734 |
| 1957 | 9,151 | 691 | 2,852 | 1,053 | 4,312 | 1,459 | 6,311 | 542 | 615 | 5,745 |
| 1958 | 10,994 | 454 | 2,421 | 1,326 | 5,165 | 1,187 | 5,552 | 443 | 742 | 5,286 |
| 1959 | 8,746 | 527 | 3,703 | 2,601 | 5,046 | 1,456 | 5,483 | 493 | 481 | 6,961 |
| 1960 | 7,164 | 721 | 2,937 | 1,390 | 4,185 | 1,743 | 5,414 | 495 | 600 | 4,826 |
| 1961 | 6,912 | 594 | 2,817 | 1,709 | 3,655 | 1,256 | 3,676 | 319 | 428 | 5,335 |
| 1962 | 5,139 | 846 | 1,882 | 700 | 2,940 | 1,183 | 3,395 | 503 | 354 | 5,240 |
| 1963 | 6,723 | 1,092 | 1,706 | 1,155 | 3,681 | 1,278 | 3,622 | 413 | 499 | 5,396 |
| 1964 | 5,740 | 825 | 2,495 | 1,505 | 3,961 | 1,608 | 3,013 | 527 | 649 | 5,058 |
| 1965 | 5,101 | 1,270 | 2,312 | 1,237 | 3,570 | 1,372 | 3,549 | 599 | 520 | 4,652 |
| 1966 | 6,680 | 1,672 | 2,282 | 1,580 | 3,718 | 2,103 | 4,764 | 713 | 658 | 4,432 |
| 1967 | 7,470 | 1,385 | 2,320 | 1,588 | 4,509 | 2,291 | 5,270 | 734 | 500 | 4,932 |
| 1968 | 7,019 | 1,947 | 2,282 | 1,405 | 3,459 | 1,646 | 3,470 | 493 | 561 | 4,360 |
| 1969 | 7,536 | 1,573 | 2,919 | 1,468 | 4,133 | 2,145 | 5,900 | 633 | 501 | 5,131 |
| 1970 | 9,960 | 1,606 | 3,447 | 2,171 | 4,858 | 2,220 | 6,369 | 624 | 578 | 5,634 |
| 1971 | 9,306 | 1,603 | 3,281 | 1,881 | 4,607 | 2,005 | 5,874 | 534 | 444 | 5,063 |
| 1972 | 9,255 | 1,621 | 3,172 | 1,895 | 4,277 | 2,441 | 7,018 | 551 | 426 | 7,932 |

| Year | Mallard | Gadwall | American Wigeon | Green Winged Teal | Blue Winged Teal | Northern Shoveler | Northern Pintail | Red-Head | Canvas Back | Scaup |
|------|---------|---------|-----------------|-------------------|------------------|-------------------|------------------|----------|-------------|-------|
| 1973 | 8,060 | 1,247 | 2,864 | 1,936 | 3,334 | 1,624 | 4,351 | 498 | 617 | 6,222 |
| 1974 | 6,681 | 1,592 | 2,665 | 1,840 | 4,968 | 2,006 | 6,583 | 627 | 504 | 5,720 |
| 1975 | 7,494 | 1,641 | 2,692 | 1,667 | 5,829 | 1,962 | 5,878 | 829 | 591 | 6,427 |
| 1976 | 7,894 | 1,245 | 2,476 | 1,536 | 4,747 | 1,756 | 5,475 | 668 | 610 | 5,779 |
| 1977 | 7,396 | 1,312 | 2,560 | 1,291 | 4,589 | 1,475 | 3,935 | 637 | 667 | 6,247 |
| 1978 | 7,353 | 1,561 | 3,286 | 2,194 | 4,471 | 1,978 | 5,106 | 738 | 369 | 5,936 |
| 1979 | 7,816 | 1,751 | 3,087 | 2,019 | 4,861 | 2,386 | 5,382 | 695 | 573 | 7,540 |
| 1980 | 7,570 | 1,391 | 3,558 | 1,994 | 4,884 | 1,902 | 4,514 | 753 | 727 | 6,314 |
| 1981 | 6,367 | 1,402 | 2,924 | 1,851 | 3,726 | 2,325 | 3,472 | 596 | 610 | 5,918 |
| 1982 | 6,254 | 1,637 | 2,440 | 1,543 | 3,657 | 2,141 | 3,709 | 617 | 510 | 5,468 |
| 1983 | 6,313 | 1,517 | 2,606 | 1,836 | 3,366 | 1,870 | 3,506 | 709 | 523 | 7,136 |
| 1984 | 5,247 | 1,532 | 2,987 | 1,361 | 3,956 | 1,620 | 2,969 | 673 | 520 | 6,909 |
| 1985 | 4,754 | 1,304 | 2,040 | 1,435 | 3,459 | 1,697 | 2,511 | 579 | 373 | 5,038 |
| 1986 | 6,836 | 1,540 | 1,732 | 1,682 | 4,463 | 2,118 | 2,737 | 560 | 437 | 5,204 |
| 1987 | 5,613 | 1,311 | 1,982 | 2,003 | 3,518 | 1,951 | 2,629 | 502 | 451 | 4,837 |
| 1988 | 6,331 | 1,349 | 2,194 | 2,058 | 3,975 | 1,680 | 2,011 | 441 | 436 | 4,684 |
| 1989 | 5,650 | 1,416 | 1,974 | 1,843 | 3,128 | 1,540 | 2,113 | 511 | 478 | 4,344 |
| 1990 | 5,452 | 1,672 | 1,860 | 1,790 | 2,776 | 1,759 | 2,257 | 481 | 539 | 4,294 |
| 1991 | 5,444 | 1,584 | 2,254 | 1,558 | 3,764 | 1,716 | 1,803 | 446 | 491 | 5,255 |
| 1992 | 5,976 | 2,033 | 2,208 | 1,773 | 4,333 | 1,954 | 2,098 | 596 | 482 | 4,639 |
| 1993 | 5,708 | 1,755 | 2,053 | 1,695 | 3,193 | 2,047 | 2,053 | 485 | 472 | 4,080 |
| 1994 | 6,980 | 2,318 | 2,382 | 2,108 | 4,616 | 2,912 | 2,972 | 654 | 526 | 4,529 |
| 1995 | 8,269 | 2,836 | 2,615 | 2,301 | 5,140 | 2,855 | 2,758 | 889 | 771 | 4,446 |
| 1996 | 7,941 | 2,984 | 2,273 | 2,459 | 6,416 | 3,449 | 2,736 | 834 | 849 | 4,250 |
| 1997 | 9,940 | 3,897 | 3,118 | 2,507 | 6,124 | 4,120 | 3,558 | 918 | 689 | 4,112 |
| 1998 | 9,640 | 3,742 | 2,858 | 2,087 | 6,399 | 3,183 | 2,521 | 1,005 | 686 | 3,472 |
| 1999 | 10,806 | 3,236 | 2,920 | 2,631 | 7,150 | 3,890 | 3,058 | 973 | 716 | 4,412 |
| 2000 | 9,470 | 3,158 | 2,733 | 3,194 | 7,431 | 3,521 | 2,908 | 926 | 707 | 4,026 |
| 2001 | 7,904 | 2,679 | 2,494 | 2,509 | 5,757 | 3,314 | 3,296 | 712 | 580 | 3,694 |
| 2002 | 7,504 | 2,235 | 2,334 | 2,334 | 4,207 | 2,138 | 1,790 | 565 | 487 | 3,524 |
| 2003 | 7,950 | 2,549 | 2,551 | 2,679 | 5,518 | 3,620 | 2,558 | 637 | 558 | 3,734 |
| 2004 | 7,425 | 2,590 | 1,981 | 2,461 | 4,073 | 2,810 | 2,185 | 605 | 617 | 3,807 |
| 2005 | 6,755 | 2,179 | 2,225 | 2,157 | 4,586 | 3,592 | 2,561 | 592 | 521 | 3,387 |
| 2006 | 7,277 | 2,825 | 2,171 | 2,587 | 5,860 | 3,680 | 3,386 | 916 | 691 | 3,247 |
| 2007 | 8,307 | 3,356 | 2,807 | 2,890 | 6,708 | 4,553 | 3,335 | 1,009 | 865 | 3,452 |
| 2008 | 7,724 | 2,728 | 2,487 | 2,980 | 6,640 | 3,508 | 2,613 | 1,056 | 489 | 3,738 |
| 2009 | 8,512 | 3,054 | 2,469 | 3,444 | 7,384 | 4,376 | 3,225 | 1,044 | 662 | 4,172 |
| 2010 | 8,430 | 2,977 | 2,425 | 3,476 | 6,329 | 4,057 | 3,509 | 1,064 | 585 | 4,244 |
| 2011 | 9,183 | 3,257 | 2,084 | 2,900 | 8,949 | 4,641 | 4,429 | 1,356 | 692 | 4,319 |
| 2012 | 10,602 | 3,586 | 2,145 | 3,471 | 9,242 | 5,018 | 3,473 | 1,270 | 760 | 5,239 |
| 2013 | 10,372 | 3,351 | 2,644 | 3,053 | 7,732 | 4,751 | 3,335 | 1,202 | 787 | 4,166 |
| 2014 | 10,900 | 3,811 | 3,117 | 3,440 | 8,542 | 5,279 | 3,220 | 1,279 | 685 | 4,611 |
| 2015 | 11,600 | 3,834 | 3,037 | 4,080 | 8,547 | 4,391 | 3,043 | 1,195 | 757 | 4,395 |

| Year | Mallard | Gadwall | American Wigeon | Green Winged Teal | Blue Winged Teal | Northern Shoveler | Northern Pintail | Red-Head | Canvas Back | Scaup |
|------------------------------|-----------------------|---------|-----------------|-------------------|------------------|-------------------|------------------|----------|-------------|-------|
| 2016 | 11,793 | 3,712 | 3,411 | 4,275 | 6,689 | 3,967 | 2,618 | 1,289 | 736 | 4,992 |
| 2017 | 10,488 | 4,180 | 2,777 | 3,605 | 7,888 | 4,353 | 2,889 | 1,115 | 732 | 4,371 |
| 2018 | 9,255 | 2,886 | 2,820 | 3,043 | 6,450 | 4,208 | 2,365 | 999 | 686 | 3,989 |
| 2019 | 9,423 | 3,258 | 2,832 | 3,178 | 5,427 | 3,649 | 2,268 | 732 | 652 | 3,590 |
| 2020 | Survey not conducted. | | | | | | | | | |
| 2021 | Survey not conducted. | | | | | | | | | |
| 2022 | 7,434 | 2,685 | 2,187 | 2,150 | 6,491 | 3,036 | 1,784 | 1,066 | 587 | 3,655 |
| 2023 | 6,126 | 2,562 | 1,889 | 2,504 | 5,253 | 2,859 | 2,219 | 931 | 619 | 3,519 |
| Percent Change in 2023 from: | | | | | | | | | | |
| 2022 | -18% | -5% | -14% | 16% | -19% | -6% | 24% | -13% | 5% | -4% |
| 1955-2022 | -5% | 28% | -16% | -1% | 27% | 14% | -53% | 45% | 0% | -26% |
| 1955-2022 Statistics | | | | | | | | | | |
| Average | 7,841 | 2,062 | 2,586 | 2,170 | 5,116 | 2,624 | 3,786 | 738 | 590 | 4,902 |
| Maximum | 11,793 | 4,180 | 3,703 | 4,275 | 9,242 | 5,279 | 9,897 | 1,356 | 865 | 7,932 |
| Minimum | 4,754 | 454 | 1,706 | 700 | 2,776 | 1,183 | 1,784 | 319 | 354 | 3,247 |

Table 4.2 Selected waterfowl harvest and hunter activity estimates for Iowa. (Source USFWS)

Data for 2001 to the present is based on the Harvest Information Program and is preliminary.

| Year | Days & Harvest (1,000s) | | | | | | | | Federal Duck Stamp | Avg Seasonal Duck Bag | Active Adult Hunters |
|------|-------------------------|-----------|----------|----------|-----------|--------------|------------|-------------|--------------------|-----------------------|----------------------|
| | Mallard | Wood Duck | B-W Teal | G-W Teal | All Ducks | Canada Geese | Snow Geese | Days Hunted | | | |
| 1961 | 88.5 | 6.8 | 0.5 | 16.3 | 139.4 | | | 230.4 | 41,147 | 3.9 | 33,500 |
| 1962 | 21.3 | 7.8 | 0.4 | 5.6 | 45.1 | 6.6 | 12.2 | 162.0 | 30,602 | 2.1 | 24,000 |
| 1963 | 43.0 | 29.0 | 27.9 | 14.9 | 139.2 | 7.2 | 10.4 | 228.2 | 37,166 | 4.7 | 29,700 |
| 1964 | 76.6 | 24.5 | 17.9 | 26.8 | 182.1 | 4.3 | 8.5 | 236.9 | 37,668 | 6.2 | 30,900 |
| 1965 | 79.8 | 15.4 | 43.8 | 22.3 | 174.6 | 6.6 | 26.3 | 271.6 | 39,941 | 6.0 | 34,000 |
| 1966 | 121.3 | 30.8 | 47.3 | 40.7 | 270.2 | 7.2 | 17.9 | 361.2 | 47,438 | 7.4 | 41,300 |
| 1967 | 124.9 | 12.4 | 43.3 | 38.4 | 229.4 | 12.4 | 16.8 | 394.6 | 52,269 | 6.6 | 44,300 |
| 1968 | 40.4 | 16.1 | 0.9 | 19.7 | 96.3 | 10.6 | 10.8 | 270.0 | 45,753 | 2.6 | 37,500 |
| 1969 | 89.9 | 21.1 | 53.3 | 22.3 | 183.7 | 15.5 | 43.2 | 397.3 | 54,807 | 5.1 | 47,500 |
| 1970 | 139.2 | 50.6 | 51.6 | 45.2 | 368.7 | 12.6 | 48.3 | 496.6 | 65,822 | 6.0 | 56,900 |
| 1971 | 160.9 | 59.3 | 49.6 | 26.6 | 376.2 | 10.4 | 46.1 | 536.5 | 68,401 | 6.3 | 58,700 |
| 1972 | 171.8 | 39.3 | 31.2 | 23.9 | 344.5 | 5.0 | 39.3 | 513.8 | 57,907 | 6.4 | 50,800 |
| 1973 | 99.9 | 31.0 | 18.5 | 18.1 | 211.9 | 11.6 | 32.5 | 401.1 | 57,196 | 3.9 | 48,700 |
| 1974 | 106.1 | 46.7 | 26.0 | 24.0 | 238.0 | 7.7 | 45.1 | 450.6 | 60,446 | 4.3 | 51,600 |
| 1975 | 117.4 | 57.5 | 51.0 | 38.6 | 313.6 | 13.5 | 41.2 | 446.1 | 58,791 | 5.9 | 49,700 |
| 1976 | 87.5 | 44.0 | 33.0 | 27.5 | 242.2 | 9.3 | 15.8 | 359.6 | 55,449 | 5.0 | 45,400 |
| 1977 | 138.7 | 37.9 | 17.0 | 38.7 | 280.0 | 7.8 | 29.1 | 407.3 | 57,143 | 5.3 | 46,200 |
| 1978 | 125.6 | 73.6 | 41.1 | 41.7 | 351.4 | 11.9 | 23.9 | 424.9 | 56,259 | 6.7 | 47,800 |
| 1979 | 183.3 | 77.8 | 69.2 | 38.0 | 441.0 | 10.0 | 43.2 | 496.7 | 49,845 | 9.5 | 44,400 |
| 1980 | 118.1 | 49.1 | 39.0 | 37.3 | 299.9 | 11.7 | 23.1 | 384.6 | 47,008 | 6.6 | 41,100 |
| 1981 | 130.2 | 54.3 | 34.6 | 27.7 | 301.1 | 10.2 | 23.1 | 371.5 | 41,648 | 7.9 | 35,900 |
| 1982 | 164.9 | 55.3 | 58.2 | 24.3 | 348.8 | 10.2 | 14.0 | 354.9 | 40,599 | 9.6 | 34,400 |

| Year | Days & Harvest (1,000s) | | | | | | | | Federal Duck Stamp | Avg Seasonal Duck Bag | Active Adult Hunters |
|------|-------------------------|-----------|----------|----------|-----------|--------------|------------|-------------|--------------------|-----------------------|----------------------|
| | Mallard | Wood Duck | B-W Teal | G-W Teal | All Ducks | Canada Geese | Snow Geese | Days Hunted | | | |
| 1983 | 115.2 | 47.3 | 74.0 | 27.8 | 324.2 | 11.5 | 16.5 | 310.4 | 40,381 | 8.5 | 34,000 |
| 1984 | 96.3 | 46.3 | 56.8 | 36.2 | 299.5 | 13.3 | 22.0 | 300.3 | 41,078 | 7.5 | 35,300 |
| 1985 | 62.0 | 37.4 | 41.5 | 22.6 | 199.8 | 10.4 | 8.5 | 241.4 | 33,304 | 6.8 | 27,900 |
| 1986 | 88.9 | 46.0 | 26.9 | 18.3 | 217.0 | 17.2 | 11.8 | 244.0 | 33,504 | 7.3 | 27,900 |
| 1987 | 64.8 | 36.1 | 14.2 | 20.1 | 161.1 | 15.1 | 3.6 | 207.0 | 30,248 | 6.0 | 25,500 |
| 1988 | 41.6 | 11.4 | 1.4 | 12.5 | 78.3 | 12.1 | 10.1 | 131.8 | 22,008 | 4.3 | 17,300 |
| 1989 | 32.2 | 17.0 | 2.9 | 17.9 | 87.8 | 20.2 | 4.4 | 127.5 | 21,686 | 4.7 | 16,600 |
| 1990 | 41.3 | 25.6 | 4.6 | 17.8 | 105.8 | 26.6 | 3.1 | 159.3 | 24,686 | 4.9 | 20,800 |
| 1991 | 63.1 | 39.4 | 6.6 | 13.3 | 154.2 | 29.3 | 8.1 | 196.7 | 24,989 | 6.8 | 21,400 |
| 1992 | 64.9 | 18.8 | 2.9 | 14.3 | 122.8 | 28.7 | 4.1 | 198.6 | 26,744 | 5.1 | 22,800 |
| 1993 | 52.7 | 22.2 | 4.1 | 7.9 | 100.9 | 17.3 | 9.5 | 176.5 | 25,640 | 4.7 | 21,092 |
| 1994 | 49.1 | 34.9 | 17.5 | 22.5 | 151.8 | 26.1 | 2.4 | 232.6 | 29,206 | 6.0 | 24,523 |
| 1995 | 86.1 | 49.2 | 38.9 | 23.7 | 242.3 | 48.0 | 4.6 | 280.2 | 30,282 | 8.2 | 25,792 |
| 1996 | 90.6 | 42.5 | 36.2 | 31.0 | 244.7 | 59.5 | 5.4 | 284.2 | 30,945 | 7.9 | 26,338 |
| 1997 | 71.2 | 52.1 | 54.5 | 32.7 | 272.0 | 52.2 | 15.2 | 338.3 | 36,062 | 8.3 | 30,737 |
| 1998 | 99.6 | 36.0 | 47.7 | 41.9 | 281.9 | 33.2 | 15.6 | 292.8 | 30,864 | 9.9 | 27,454 |
| 1999 | 55.9 | 35.8 | 41.9 | 17.4 | 176.7 | 33.0 | 12.5 | 271.9 | 32,419 | 7.2 | 27,024 |
| 2000 | 74.2 | 39.9 | 25.3 | 25.4 | 209.6 | 61.0 | 0.6 | 288.4 | 30,951 | 8.2 | 26,693 |
| 2001 | 117.2 | 45.5 | 49.3 | 29.7 | 296.4 | 58.1 | 5.2 | 203.5 | 32,090 | 11.9 | 25,000 |
| 2002 | 97.2 | 44.5 | 50.6 | 43.0 | 287.2 | 67.1 | 1.1 | 185.7 | 30,806 | 12.3 | 23,300 |
| 2003 | 101.7 | 38.6 | 30.1 | 29.4 | 248.9 | 55.5 | 14.4 | 187.1 | 30,206 | 11.0 | 22,500 |
| 2004 | 54.7 | 52.9 | 28.5 | 16.8 | 184.5 | 70.3 | 1.0 | 203.0 | 28,649 | 9.0 | 23,900 |
| 2005 | 77.9 | 38.1 | 39.0 | 21.2 | 205.2 | 78.6 | 0.6 | 128.9 | 26,943 | 11.8 | 20,800 |
| 2006 | 73.2 | 26.7 | 27.8 | 31.9 | 203.3 | 73.9 | 0.2 | 129.9 | 29,380 | 11.3 | 21,300 |
| 2007 | 72.7 | 34.2 | 40.3 | 39.5 | 232.8 | 64.6 | 0.3 | 151.4 | 26,531 | 11.4 | 23,700 |
| 2008 | 72.3 | 38.3 | 15.0 | 31.3 | 206.1 | 62.2 | 0.8 | 135.8 | 26,354 | 10.9 | 21,700 |
| 2009 | 45.3 | 45.1 | 35.5 | 22.5 | 181.5 | 62.0 | 0.0 | 130.3 | NA | 10.3 | 19,500 |
| 2010 | 68.3 | 55.5 | 46.8 | 20.3 | 245.5 | 65.8 | 0.2 | 149.1 | NA | 11.1 | 25,200 |
| 2011 | 72.0 | 43.3 | 23.4 | 19.7 | 201.8 | 52.0 | 0.1 | 136.2 | NA | 10.8 | 24,900 |
| 2012 | 50.0 | 18.2 | 14.8 | 13.0 | 117.7 | 38.9 | 0.0 | 69.7 | NA | 9.4 | 13,800 |
| 2013 | 66.6 | 35.9 | 42.7 | 19.3 | 202.3 | 73.7 | 0.0 | 128.5 | NA | 14.1 | 14,400 |
| 2014 | 60.0 | 16.1 | 56.6 | 17.5 | 174.1 | 47.3 | 1.6 | 96.6 | NA | 12.5 | 13,900 |
| 2015 | 48.8 | 29.9 | 47.1 | 16.1 | 167.8 | 53.6 | 0.0 | 119.8 | NA | 11.5 | 14,555 |
| 2016 | 51.3 | 11.6 | 18.3 | 23.2 | 138.6 | 56.9 | 1.2 | 105.4 | NA | 10.3 | 13,500 |
| 2017 | 44.3 | 23.6 | 37.4 | 21.0 | 156.0 | 59.6 | 0.0 | 99.2 | NA | 11.6 | 15,700 |
| 2018 | 53.9 | 16.9 | 47.6 | 18.0 | 176.1 | 46.1 | 0.2 | 97.8 | NA | 10.9 | 16,700 |
| 2019 | 33.5 | 22.8 | 26.7 | 13.1 | 127.6 | 52.6 | 0.0 | 77.0 | NA | 12.4 | 10,300 |
| 2020 | 32.4 | 24.9 | 45.6 | 27.9 | 174.0 | 60.6 | 0.3 | 114.9 | NA | 15.2 | 13,600 |
| 2021 | 22.5 | 9.7 | 23.6 | 24.0 | 101.7 | 24.2 | 0.0 | 79.6 | NA | 9.9 | 12,900 |
| 2022 | 19.8 | 11.6 | 20.9 | 20.5 | 92.5 | 27.8 | 0.2 | 50.0 | NA | 9.3 | 9,900 |

Percent Change in 2022 From:

| | | | | | | | | | | | |
|------|------|-----|------|------|-----|-----|--|------|--|-----|------|
| 2021 | -12% | 20% | -11% | -15% | -9% | 15% | | -37% | | -6% | -23% |
|------|------|-----|------|------|-----|-----|--|------|--|-----|------|

| Year | Days & Harvest (1,000s) | | | | | | | | Federal Duck Stamp | Avg Seasonal Duck Bag | Active Adult Hunters |
|--------------------|-------------------------|-----------|----------|----------|-----------|--------------|------------|-------------|--------------------|-----------------------|----------------------|
| | Mallard | Wood Duck | B-W Teal | G-W Teal | All Ducks | Canada Geese | Snow Geese | Days Hunted | | | |
| 1961-2021 Average | -76% | -67% | -36% | -18% | -57% | -14% | -98% | -80% | | 16% | -66% |
| 1961-18 Statistics | | | | | | | | | | | |
| Average | 81.8 | 36.1 | 32.8 | 25.1 | 217.6 | 31.6 | 13.3 | 257.5 | 39,196.8 | 7.8 | 30,134.6 |
| Maximum | 183.3 | 77.8 | 74.0 | 45.2 | 441.0 | 78.6 | 48.3 | 536.5 | 68,401.0 | 14.1 | 58,700.0 |
| Minimum | 21.3 | 6.8 | 0.4 | 5.6 | 45.1 | 4.3 | 0.0 | 69.7 | 21,686.0 | 2.1 | 13,500.0 |
| 10-yr avg | | | | | | | | | | | |
| 1961-70 | 82.5 | 21.5 | 28.7 | 25.2 | 182.9 | 9.2 | 21.6 | 304.9 | 45,261 | 5.0 | 37,960 |
| 1971-80 | 130.9 | 51.6 | 37.6 | 31.4 | 309.9 | 9.9 | 33.9 | 442.1 | 56,845 | 6.0 | 48,440 |
| 1981-90 | 83.7 | 37.7 | 31.5 | 22.5 | 212.3 | 14.7 | 11.7 | 244.8 | 32,914 | 6.8 | 27,560 |
| 1991-00 | 70.7 | 37.1 | 27.6 | 23.0 | 195.7 | 39.2 | 7.8 | 256.0 | 29,973 | 7.2 | 25,385 |
| 2001-10 | 77.6 | 41.7 | 36.1 | 28.4 | 227.9 | 65.3 | 2.4 | 160.5 | 28,939.6 | 11.1 | 22,690 |
| 2011-20 | 51.3 | 24.3 | 36.0 | 18.9 | 163.6 | 54.1 | 0.4 | 104.5 | NA | 11.9 | 15,316 |

Table 4.3 Duck and coot seasons in Iowa.

| Year | Season Length | Season Dates | Shooting Hours | Limits | | Additional Bag Limit Information |
|------|---------------|---------------|----------------|---------------------|---------------|--|
| | | | | Duck Bag/Poss | Coot Bag/Poss | |
| | | Statewide | | | | |
| 1917 | 227 | Sep 1-Apr 15 | Unknown | ? | ? | |
| 1918 | 107 | Sep 16-Dec 31 | SR-SS | 25/none | 25/none | |
| 1919 | 107 | Sep 16-Dec 31 | SR-SS | 25/none | 25/none | |
| 1920 | 107 | Sep 16-Dec 31 | SR-SS | 25/none | 25/none | |
| 1921 | 107 | Sep 16-Dec 31 | SR-SS | 25/none | 25/none | |
| 1922 | 107 | Sep 16-Dec 31 | SR-SS | 25/none | 25/none | |
| 1923 | 107 | Sep 16-Dec 31 | SR-SS | 25/none | 25/none | |
| 1924 | 107 | Sep 16-Dec 31 | ½ SR-SS | 15/50 WF | 25/none | WF = all waterfowl combined |
| 1925 | 107 | Sep 16-Dec 31 | ½ SR-SS | 15/50 WF | 25/none | |
| 1926 | 107 | Sep 16-Dec 31 | ½ SR-SS | 15/50 WF | 25/none | |
| 1927 | 107 | Sep 16-Dec 31 | ½ SR-SS | 15/50 WF | 25/none | |
| 1928 | 107 | Sep 16-Dec 31 | ½ SR-SS | 15/50 WF | 25/none | |
| 1929 | 107 | Sep 16-Dec 31 | ½ SR-SS | 15/21 DC | 25/none | DC = all ducks combined |
| 1930 | 107 | Sep 16-Dec 31 | ½ SR-SS | 15/21 DC | 25/none | |
| 1931 | 30 | Oct 20-Nov 19 | ½ SR-SS | 15/21 DC | 25/none | |
| 1932 | 61 | Oct 1-Nov 30 | ½ SR-SS | 15/21 ^{*a} | 25/none | ^{*a} Closed season on Wd, Ru, & Bu. |
| 1933 | 61 | Oct 1-Nov 30 | ½ SR-SS | 12/24 ^{*a} | 25/none | |
| 1934 | 30 | Oct 10-Nov 18 | SR-SS | 12/24 ^{*a} | 25/none | Live decoys limited to 25. Season included 10 rest days. |
| 1935 | 30 | Oct 21-Nov 19 | 7am-4pm | 10/10 ^{*a} | 15/15 | Use of live decoys prohibited. |
| 1936 | 30 | Nov 1-Nov 30 | 7am-4pm | 10/10 ^{*b} | 15/15 | ^{*b} Closed sea. on Wd, Cb, Rh, Ru, & Bu. |
| 1937 | 30 | Oct 9-Nov 7 | 7am-4pm | 10/10 ^{*b} | 25/25 | |
| 1938 | 45 | Oct 15-Nov 28 | 7am-4pm | 10/20 ^{*c} | 25/25 | ^{*c} Only 1 Bu, 1 Cb, 1 Ru, and 1 Rh, & no more than 3 in aggregate |
| 1939 | 45 | Oct 22-Dec 5 | 7am-4pm | 10/20 ^{*c} | 25/25 | |
| 1940 | 60 | Oct 16-Dec 14 | SR-4pm | 10/20 ^{*c} | 25/25 | |
| 1941 | 60 | Oct 16-Dec 14 | SR-4pm | 10/20 ^{*d} | 25/25 | ^{*d} Only 3 Rh or 3 Bu or 3 in aggregate & only 1 Wd in poss at any time. |
| 1942 | 70 | Oct 15-Dec 23 | SR-SS | 10/20 ^{*d} | 25/25 | |

| Year | Season Length | Season Dates | Shooting Hours | Limits | | Additional Bag Limit Information |
|------|---------------|--|------------------|---------------------|---------------|---|
| | | | | Duck Bag/Poss | Coot Bag/Poss | |
| 1943 | 70 | Sep 25-Dec 3 | ½ SR-SS | 10/20* ^d | 25/25 | |
| 1944 | 80 | Sep 20-Dec 8 | ½ SR-SS | 10/20* ^e | 25/25 | * ^e Only 5 each or in comb.: Ma, Pt, or Wg & only 1 Wd. 25 Am or Rm or comb. |
| 1945 | 80 | Sep 20-Dec 8 | ½ SR-SS | 10/20* ^f | 25/25 | * ^f Only 1 Wd in poss. at any time 25 Cm or Rm or comb. |
| 1946 | 45 | Oct 26-Dec 9 | ½ SR-½ SS | 7/14* ^f | 25/25 | |
| 1947 | 30 | Oct 21-Nov 19 | ½ SR-1 SS | 4/8* ^f | 15/15 | |
| 1948 | 30 | Oct 29-Nov 27 | ½ SR-1 SS | 4/8* ^f | 15/15 | |
| 1949 | 40 | Oct 21-Nov 29 | ½ SR-1 SS | 4/8* ^f | 15/15 | |
| 1950 | 35 | Oct 20-Nov 23 | ½ SR-1 SS | 4/8* ^f | 15/15 | |
| 1951 | 45 | Oct 12-Nov 25 | ½ SR-1 SS | 4/8* ^f | 10/10 | |
| 1952 | 55 | Oct 8-Dec 1 | ½ SR-1 SS | 4/8* ^g | 10/10 | * ^g Only 1 Wd in poss. at any time. 1 Hm or 25 Cm or Rm or comb. |
| 1953 | 55 | Oct 8-Dec 1 | ½ SR-SS | 4/8* ^g | 10/10 | |
| 1954 | 55 | Oct 15-Dec 8 | ½ SR-1 SS | 4/8* ^h | 10/10 | * ^h Closed sea. on Wd.; 1 Hm or 25 Cm or Rm or comb. |
| 1955 | 70 | Oct 8-Dec 16 | ½ SR-½ SS | 4/8* ^g | 10/10 | |
| 1956 | 70 | Oct 6-Dec 14 | ½ SR-½ SS | 4/8* ^h | 10/10 | |
| 1957 | 70 | Oct 5-Dec 13 | ½ SR-SS | 4/8* ⁱ | 10/10 | * ⁱ Closed season on Wd.; 5 mergansers, only 1 Hm. |
| 1958 | 70 | Oct 4-Dec 12 | ½ SR-SS | 4/8* ⁱⁱ | 10/10 | * ⁱⁱ Only 2 Cb or 2 Rh or 2 in comb.; No Wd season. 5 merg. only 1 Hm. |
| 1959 | 50 | Oct 20-Dec 8 | SR-SS | 3/6* ^j | 3/6 | * ^j Only 1 Wd, 1 Cb, 1 Rh, or 1 Ru.; 5 mergansers, only 1 Hm. |
| 1960 | 50 | Oct 15-Dec 3 | ½ SR-SS | 3/6* ^k | 8/12 | * ^k Only 1 Wd. Closed sea. on Cb & Rh.; 5 mergansers, only 1 Hm. |
| 1961 | 30 | Oct 21-Nov 19 | SR-SS | 2/4* ^k | 6/6 | |
| 1962 | 25 | Oct 27-Nov 20 | SR-SS | 2/4* ^l | 6/6 | * ^l Only 1 Ma or Bd, 2 Wd. No Cb or Rh.; 2 bonus Sc., 5 merg., only 1 Hm. |
| 1963 | 35 | Oct 5-13 Oct 26-Nov 20 | SR-SS | 4/8* ^m | 8/8 | * ^m Only 2 Ma or Bd, 2 Wd. No Cb or Rh.; 5 mergansers, only 1 Hm. |
| 1964 | 35 | Oct 3-4 Oct 24-Nov 25 | SR-SS | 4/8* ⁿ | 10/20 | * ⁿ Only 2 Ma or Bd, 2 Wd, 2 Cb or 2 Rh.; 5 mergansers, only 1 Hm. |
| 1965 | 40 | Sep 11-19 (teal season) Oct 23-Dec 1 | SR-SS ½ SR-SS | 4/8* ^o | 10/20 | * ^o Only 1 Ma or Pt or Bd, 2 Wd, 2 Cb or Rh.; 5 mergansers, only 1 Hm. |
| 1966 | 45 | Sep 17-25 (teal season) Oct 15-Nov 28 | SR-SS ½ SR-SS | 4/8* ^{oo} | 10/20 | * ^{oo} Only 2 Ma or Bd, 2 Wd, 2 Cb.; 5 mergansers, only 1 Hm. |
| 1967 | 40 | Sep 16-24 (teal season) Oct 21-Nov 29 | SR-SS ½ SR-SS | 4/8* ^p | 10/20 | * ^p Only 2 Ma or Bd, 1 Wd, & 1 Cb.; 5 mergansers, only 1 Hm. |

| Year | Season Length | Season Dates | Shooting Hours | Limits | | Additional Bag Limit Information | |
|--------------------------------------|---------------|--|---------------------------|-------------------|-------------------|--|--|
| | | | | Duck Bag/Poss | Coot Bag/Poss | | |
| 1968 | 30 | Oct 26-Nov 24 | ½ SR-SS | 3/6* ^q | 10/20 | * ^q Only 1 Ma, 2 Bd, 2 Wd, 1 Cb or Rh.; 5 mergansers, only 1 Hm. | |
| 1969 | 30 | Sep 13-21 (teal season) Oct 25-Nov 23 | SR-SS ½ SR-SS | 4/8* ^r | 10/20 | * ^r Only 2 Ma, 2 Bd, 2 Wd, 1 Cb or Rh.; 5 mergansers, only 1 Hm. | |
| 1970 | 55 | Oct 3-Nov 26 | SR-SS | PS* ^s | 15/30 | * ^s 90 pt = Hn Ma, Bd, Wd, Rh, Cb, Hm.; 20 pt= Dr Ma, Hn Pt, Rn. 10 pt= all other. | |
| 1971 | 50 | Oct 2-Nov 20 | ½ SR-SS | PS* ^t | 15/30 | * ^t 100 pt= Cb, Rh. 90 pt= Hn Ma, Bd, Wd, Hm.; 20 pt= Dr Ma, Hn Pt, Rn. 10 pt= all other. | |
| 1972 | 50 | Oct 7-12 Oct 21-Dec 3 | SR-SS | PS* ^u | 15/30 | * ^u 90 pt= Hn Ma, Bd, Wd, Hm. 20 pt= Dr Ma, Hn Pt, Rn. 10 pt= all other.; Closed season on Cb & Rh. | |
| First year state duck stamp required | | | | | | | |
| 1973 | 45 | Oct 6-10 Oct 20-Nov 28 | SR-SS | PS* ^v | 15/30 | * ^v 100 pt= Cb, Rh. 90 pt= Hn Ma, Wd, Hm.; 25 pt= Dr Ma, Pt, Bd, Rn & all others.; 15 pt= Bt, Gt, Ga, Wg, Sh, Sc, Cm, Rm. | |
| 1974 | 45 | Oct 5-12 Oct 26-Dec 1 | SR-SS | PS* ^w | 15/30 | * ^w 100 pt= Cb, Rh. 90 pt= Hn Ma, Bd, Wd, Hm.; 35 pt= Dr Ma, Rn, Md. 15 pt= all others. | |
| 1975 | 45 | Oct 4-11 Oct 25-Nov 30 | ½ SR-SS | PS* ^x | 15/30 | * ^x 100 pt= Cb, Rh. 90 pt= Hn Ma, Bd, Wd, Hm.; 35 pt= Dr Ma, Rn, Wg, & all others.; 10 pt= Bwt, Gwt, Ga, Pt, Sh, Sc. | |
| 1976 | 50 | Oct 2-7 Oct 23-Dec 5 | ½ SR-SS | PS* ^y | 15/30 | * ^y 100 pt= Cb. 70 pt= Hn Ma, Bd, Wd, Rh, Hm.; 25 pt= Dr Ma, Rn, Wg, & all others.; 10 pt= Bt, Gt, Ct, Ga, Pt, Sh, Sc, Cm, Rm. | |
| 1977 | 45 | Oct 8-15 Oct 22-Nov 27 | SR-SS | PS* ^y | 15/30 | | |
| 1978 | 50 | Oct 1-8 Oct 21-Dec 1 | ½ SR-SS | PS* ^z | 15/30 | * ^z 100 pt= Cb. 70 pt= Hn Ma, Bd, Wd, Rh, Hm.; 35 pt= Dr Ma, Rn, & all others.; 10 pt= Bt, Gt, Ct, Ga, Wg, Pt, Sh, Sc, Cm, Rm. | |
| 1979 | 50 | Sep 22-26 Oct 20-Dec 3 | ½ SR-SS | PS* ^{aa} | 15/30 | * ^{aa} 100 pt= Cb. 70 pt= Hn Ma, Bd, Wd, Rh, Hm.; 25 pt= Dr Ma, Rn, & all others.; 10 pt= Bt, Gt, Ct, Ga, Wg, Pt, Sh, Sc, Cm, Rm. | |
| 1980 | 50 | Sep 20-24 Oct 18-Dec 1 | ½ SR-SS | PS* ^{aa} | 15/30 | | |
| 1981 | 50 | Sep 19-23 Oct 17-Nov 30 | ½ SR-SS | PS* ^{aa} | 15/30 | | |
| 1982 | 50 | Sep 18-22 Oct 23-Dec 6 | ½ SR-SS | PS* ^{aa} | 15/30 | | |
| | | North Zone (1) | South Zone (1) | | | | |
| 1983 | 50 | Sep 17-21 Oct 15-Nov 28 | Sep 17-21 Oct 22-Dec 5 | ½ SR-SS | PS* ^{ab} | 15/30 | * ^{ab} 100 pt= Cb, Bd. 70 pt= Hn Ma, Wd, Rh, Hm.; 25 pt= Dr Ma, Rn, & all others.; 10 pt= Bt, Gt, Ct, Ga, Wg, Pt, Sh, Sc, Cm, Rm. |

| Year | Season Length | Season Dates | | Shooting Hours | Limits | | Additional Bag Limit Information |
|----------------|---------------|-----------------------------|-----------------------------|----------------|---------------|---------------|---|
| | | | | | Duck Bag/Poss | Coot Bag/Poss | |
| 1984 | 50 | Sep 22-26 Oct 20-Dec 3 | Sep 22-26 Oct 27-Dec 10 | ½ SR-SS | PS*ab | 15/30 | |
| 1985 | 40 | Sep 21-23 Oct 19-Nov 24 | Sep 21-23 Oct 26-Dec 1 | ½ SR-SS | PS*ac | 15/30 | *ac100 pt= Hn Ma, Cb, Bd. 70 pt= Wd, Rh, Hm.; 35 pt= Dr Ma, Pt, Rn, & all others.; 20 pt= Bt, Gt, Ct, Ga, Wg, Sh, Sc, Cm, Rm. |
| 1986 | 40 | Sep 20-24 Oct 18-Nov 21 | Sep 20-22 Oct 25-Nov 30 | ½ SR-SS | PS*ad | 15/30 | *ad100 pt= Hn Ma, Bd. 70 pt= Wd, Rh, Hm.; 35 pt= Dr Ma, Pt, Rn, & all others.; 20 pt= Bt, Gt, Ct, Ga, Wg, Sh, Sc, Cm, Rm.; Closed season on Cb. |
| | | North Zone (2) | South Zone (2) | | | | |
| 1987 (*SH) | 40 | Sep 19-23 Oct 17-Nov 20 | Sep 19-21 Oct 24-Nov 29 | ½ SR-SS | PS*ad | 15/30 | |
| 1988 | 30 | Oct 8-9 Oct 22-Nov 18 | Oct 22-28 Nov 5-27 | SR-SS | 3/6*ae | 15/30 | *aeOnly 2 Ma (1 Hn), 2 Wd, 1 Pt, 1 Rh,1 Bd.; 5 merg., only 1 Hm. Closed sea. on Cb. |
| 1989 | 30 | Oct 7-8 Oct 21-Nov 17 | Oct 21-27 Nov 4-26 | SR-SS | 3/6*ae | 15/30 | |
| 1990 | 30 | Oct 6-7 Oct 20-Nov 16 | Oct 20-26 Nov 3-25 | ½ SR-SS | 3/6*ae | 15/30 | |
| 1991 | 30 | Oct 5-6 Oct 19-Nov 15 | Oct 19-25 Nov 9-Dec 1 | ½ SR-SS | 3/6*ae | 15/30 | |
| 1992 | 30 | Oct 10-13 Oct 24-Nov 18 | Oct 24-30 Nov 7-29 | ½ SR-SS | 3/6*ae | 15/30 | |
| 1993 | 30 | Oct 2-4 Oct 23-Nov 18 | Oct 23-29 Nov 6-28 | ½ SR-SS | 3/6*ae | 15/30 | |
| 1994 | 40 | Sept 17-19 Oct 15-Nov 20 | Oct 1-3 Oct 22-Nov 27 | ½ SR-SS | 3/6*af | 15/30 | *afOnly 2 Ma (1 Hn), 2 Wd, 1 Pt, 1 Rh,1 Bd, 1 Cb.; 5 merg., only 1 Hm. |
| 1995 | 50 | Sept 23-27 Oct 15-Nov 28 | Sept 23-25 Oct 21-Dec 6 | ½ SR-SS | 5/10*ag | 15/30 | *agOnly 4 Ma (1 Hn), 2 Wd, 1 Pt, 1 Rh,1 Bd, 1 Cb.; 5 merg., only 1 Hm. |
| 1996 | 50 | Sept 21-25 Oct 19-Dec 2 | Sept 21-23 Oct 19-Dec 4 | ½ SR-SS | 5/10*ah | 15/30 | *ahOnly 4 Ma (1 Hn), 2 Wd, 1 Pt, 2 Rh,1 Bd, 1 Cb.; 5 merg., only 1 Hm. |
| Youth Day | | Oct 5 | Oct 5 | ½ SR-SS | 5/10*ah | | |
| 1997 | 60 | Sept 20-24 Oct 11-Dec 4 | Sept 20-24 Oct 18-Dec 11 | ½ SR-SS | 6/12*ai | 15/30 | *aiOnly 4 Ma (2 Hn), 2 Wd, 3 Pt, 2 Rh,1 Bd, 1 Cb.; 5 merg., only 1 Hm. |
| Youth Day | | Sept 27 | Sept 27 | ½ SR-SS | 6/12*ai | 15/30 | |
| 1998 (*HIP) | 60 | Sept 19-23 Oct 10-Dec 3 | Sept 19-23 Oct 17-Dec 10 | ½ SR-SS | 6/12*aj | 15/30 | *ajOnly 4 Ma (2 Hn), 2 Wd, 1 Pt, 2 Rh,1 Bd, 1 Cb.; 5 merg., only 1 Hm. |
| Youth Day | | Sept 26 | Sept 26 | ½ SR-SS | 6/12*aj | 15/30 | |
| 1999 | 60 | Sept 18-22 Oct 16-Dec 9 | Sept 18-22 Oct 16-Dec 9 | ½ SR-SS | 6/12*ak | 15/30 | *akOnly 4 Ma (2 Hn), 2 Wd, 1 Pt, 2 Rh,1 Bd, 1 Cb & 3 Sc. 5 merg., only 1 Hm. |
| Youth Day | | Oct 9 | Oct 9 | ½ SR-SS | 6/12*ak | 15/30 | |

| Year | Season Length | Season Dates | | Shooting Hours | Limits | | Additional Bag Limit Information |
|------------|---------------|-----------------------------|-----------------------------|----------------|---------------------|---------------|---|
| | | | | | Duck Bag/Poss | Coot Bag/Poss | |
| 2000 | 60 | Sept 23-27 Oct 14-Dec 7 | Sept 23-27 Oct 14-Dec 7 | ½ SR-SS | 6/12* ^{ak} | 15/30 | |
| Youth Day | | Oct 7-8 | Oct 7-8 | ½ SR-SS | 6/12* ^{ak} | 15/30 | |
| 2001 | 60 | Sept 22-26 Oct 13-Dec 6 | Sept 22-26 Oct 13-Dec 6 | ½ SR-SS | 6/12* ^{ak} | 15/30 | |
| Canvasback | | Oct. 27-Nov 15 | Nov 17-Dec 6 | | | | |
| Youth Day | | Oct 6-7 | Oct 6-7 | ½ SR-SS | 6/12* ^{ak} | 15/30 | |
| 2002 | 60 | Sept 21-25 Oct 12-Dec 5 | Sept 21-23 Oct 19-Dec 14 | ½ SR-SS | 6/12* ^{al} | 15/30 | * ^{al} Only 4 Ma (2 Hn), 2 Wd, 1 Pt, 2 Rh,1 Bd, & 3 Sc. 5 merg., only 1 Hm. Closed sea. on Cb |
| Pintail | | Sept 21-25 Oct 12-Nov 5 | Sept 21-23 Oct 19-Nov 14 | | | | |
| Youth Day | | Oct 5-6 | Oct 5-6 | ½ SR-SS | 6/12* ^{al} | 15/30 | |
| 2003 | 60 | Sept 20-24 Oct 11-Dec 4 | Sept 20-22 Oct 18-Dec 13 | ½ SR-SS | 6/12* ^{ak} | 15/30 | * ^{ak} Only 4 Ma (2 Hn), 2 Wd, 1 Pt, 2 Rh,1 Bd, 1 Cb & 3 Sc. 5 merg., only 1 Hm. |
| Pintail | | Sept 20-24 Oct 11-Nov 4 | Sept 20-22 Oct 18-Nov 13 | | | | |
| Canvasback | | Oct 18-Nov 16 | Oct 25-Nov 23 | | | | |
| Youth Day | | Oct 4-5 | Oct 4-5 | ½ SR-SS | 6/12* ^{ak} | 15/30 | |
| 2004 | 60 | Sept 18-22 Oct 16-Dec 9 | Sept 25-26 Oct 16-Dec 12 | ½ SR-SS | 6/12* ^{ak} | 15/30 | |
| Pintail | | Sept 18-22 Oct 16-Nov 9 | Sept 25-26 Oct 16-Nov 12 | | | | |
| Canvasback | | Oct 23-Nov 21 | Oct 23-Nov 21 | | | | |
| Youth Day | | Oct 2-3 | Oct 9-10 | ½ SR-SS | 6/12* ^{ak} | 15/30 | |
| 2005 | 60 | Sept 17-21 Oct 15-Dec 8 | Sept 24-28 Oct 22-Dec 15 | ½ SR-SS | 6/12* ^{am} | 15/30 | * ^{am} Only 4 Ma (2 Hn), 2 Wd, 1 Pt, 2 Rh,1 Bd, 1 Cb & 2 Sc. 5 merg., only 1 Hm. |
| Canvasback | | Oct 22-Nov 20 | Oct 29-Nov 27 | | | | |
| Youth Day | | Oct 8-9 | Oct 8-9 | ½ SR-SS | 6/12* ^{am} | 15/30 | |
| | | North Zone (3) | South Zone (3) | | | | |
| 2006 | 60 | Sept 23-27 Oct 14-Dec 7 | Sept 23-27 Oct 21-Dec 14 | ½ SR-SS | 6/12* ^{an} | 15/30 | * ^{an} Only 4 Ma (2 Hn), 2 Wd, 1 Pt, 2 Rh,1 Bd, 1 Cb & 2 Sc. 5 merg., only 2 Hm. |
| Youth Day | | Oct 7-8 | Oct 7-8 | ½ SR-SS | 6/12* ^{an} | 15/30 | |
| 2007 | 60 | Sept 22-26 Oct 13-Dec 6 | Sept 22-26 Oct 20-Dec 13 | ½ SR-SS | 6/12* ^{ao} | 15/30 | * ^{ao} Only 4 Ma (2 Hn), 2 Wd, 1 Pt, 2 Rh,1 Bd, 2 Cb & 2 Sc. 5 merg., only 2 Hm. |
| Youth Day | | Oct 6-7 | Oct 6-7 | ½ SR-SS | 6/12* ^{ao} | 15/30 | |
| 2008 | 60 | Sept 20-24 Oct 18-Dec 11 | Sept 20-24 Oct 18-Dec 11 | ½ SR-SS | 6/12* ^{ap} | 15/30 | * ^{ap} Only 4 Ma (2 Hn), 3 Wd, 1 Pt, 2 Rh,1 Bd, & 1 Sc (Nov 1-20 limit 2 Sc). 5 merg., only 2 Hm. Closed season on Cb. |

| Year | Season Length | Season Dates | | Shooting Hours | Limits | | Additional Bag Limit Information | |
|-----------|---------------|------------------------------|-------------------------------|-----------------------------|---------------------|---------------------|--|--|
| | | | | | Duck Bag/Poss | Coot Bag/Poss | | |
| Youth Day | | Oct 4-5 | Oct 4-5 | ½ SR-SS | 6/12* ^{ap} | 15/30 | | |
| 2009 | 60 | Sept 19-23 Oct 10-Dec 3 | Sept 19-23 Oct 17-Dec 10 | ½ SR-SS | 6/12* ^{aq} | 15/30 | * ^{aq} Only 4 Ma (2 Hn), 3 Wd, 1 Pt, 2 Rh,1 Bd, 1 Cb, & 2 Sc. 5 merg., only 2 Hm. | |
| Youth Day | | Oct 3-4 | Oct 3-4 | ½ SR-SS | 6/12* ^{aq} | 15/30 | | |
| 2010 | 60 | Sept 18-22 Oct 16-Dec 9 | Sept 18-22 Oct 23-Dec 16 | ½ SR-SS | 6/12* ^{ar} | 15/30 | * ^{ar} Only 4 Ma (2 Hn), 3 Wd, 2 Pt, 2 Rh,1 Bd, 1 Cb, & 2 Sc. 5 merg., only 2 Hm. | |
| Youth Day | | Oct 2-3 | Oct 9-10 | ½ SR-SS | 6/12* ^{ar} | 15/30 | | |
| | | North Zone (4) | South Zone (4) | | | | | |
| 2011 | 60 | Sept 17-21 Oct 15-Dec 8 | Sept 17-21 Oct 22-Dec 15 | ½ SR-SS | 6/12* ^{ar} | 15/30 | | |
| Youth Day | | Oct 1-2 | Oct 8-9 | ½ SR-SS | 6/12* ^{ar} | 15/30 | | |
| | | North Zone (5) | South Zone (5) | Missouri River (5) | | | | |
| 2012 | 60 | Sept 22-26 Oct 13-Dec 6 | Sept 22-26 Oct 20-Dec 13 | Sept 22-26 Oct 27-Dec 20 | ½ SR-SS | 6/12* ^{as} | 15/30 | * ^{as} Only 4 Ma (2 Hn), 3 Wd, 2 Pt, 2 Rh,1 Bd, 1 Cb, & 4 Sc. 5 merg., only 2 Hm. |
| Youth Day | | Oct 6-7 | Oct 13-14 | Oct 20-21 | ½ SR-SS | 6/12* ^{as} | 15/30 | |
| 2013 | 60 | Sept 21-25 Oct 12-Dec 5 | Sept 21-25 Oct 19-Dec 12 | Sept 21-25 Oct 26-Dec 19 | ½ SR-SS | 6/18* ^{at} | 15/45 | * ^{at} Only 4 Ma (2 Hn), 3 Wd, 2 Pt, 2 Rh,1 Bd, 2 Cb, & 4 Sc. 5 merg., only 2 Hm. |
| Youth Day | | Oct 5-6 | Oct 12-13 | Oct 19-20 | ½ SR-SS | 6/18* ^{at} | 15/45 | |
| 2014 | 60 | Oct 4-19 Oct 25-Dec 7 | Oct 4-8 Oct 18-Dec 11 | Oct 4-8 Oct 25-Dec 18 | ½ SR-SS | 6/18* ^{at} | 15/45 | * ^{at} Only 4 Ma (2 Hn), 3 Wd, 2 Pt, 2 Rh,1 Bd, 2 Cb, & 4 Sc. 5 merg., only 2 Hm. |
| Youth Day | | Sep 27-28 | Oct 11-12 | Oct 18-19 | ½ SR-SS | 6/18* ^{at} | 15/45 | |
| Teal | | Sep 6-21 | Sep 6-21 | Sep 6-21 | SR-SS | 6/18 | | |
| 2015 | 60 | Oct 3-18 Oct 24-Dec 6 | Oct 3-7 Oct 17-Dec 10 | Oct 3-7 Oct 24-Dec 17 | ½ SR-SS | 6/18* ^{at} | 15/45 | * ^{at} Only 4 Ma (2 Hn), 3 Wd, 2 Pt, 2 Rh,1 Bd, 2 Cb, & 4 Sc. 5 merg., only 2 Hm. |
| Youth Day | | Sep 26-27 | Oct 10-11 | Oct 17-18 | ½ SR-SS | 6/18* ^{at} | 15/45 | |
| Teal | | Sep 5-20 | Sep 5-20 | Sep 5-20 | SR-SS | 6/18 | | |
| 2016 | 60 | Sep 24-Oct 2 Oct 15-Dec 4 | Oct 1-5 Oct 22-Dec 15 | Oct 8-9 Oct 22-Dec 18 | ½ SR-SS | 6/18* ^{at} | 15/45 | * ^{at} Only 4 Ma (2 Hn), 3 Wd, 2 Pt, 2 Rh,1 Bd, 2 Cb, & 4 Sc. 5 merg., only 2 Hm. |
| Youth Day | | Sep 17-18 | Sep 24-25 | Oct 1-2 | ½ SR-SS | 6/18* ^{at} | 15/45 | |
| Teal | | Sep 3-11 | Sep 3-11 | Sep 3-18 | SR-SS | 6/18 | | |
| | | North Zone (6) | South Zone (6) | Missouri River (6) | | | | |
| 2017 | 60 | Sep 23-Oct 1 Oct 14-Dec 3 | Sep 30-Oct 4 Oct 21-Dec 14 | Oct 7-8 Oct 21-Dec 17 | ½ SR-SS | 6/18* ^{at} | 15/45 | * ^{at} Only 4 Ma (2 Hn), 3 Wd, 1 Pt, 2 Rh,2 Bd, 2 Cb, & 3 Sc. 5 merg., only 2 Hm |
| Youth Day | | Sep 16-17 | Sep 23-24 | Sep 30-Oct 1 | ½ SR-SS | 6/18* ^{at} | 15/45 | |
| Teal | | Sep 2-10 | Sep 2-10 | Sep 2-17 | SR-SS | 6/18 | | |

| Year | Season Length | Season Dates | | | Shooting Hours | Limits | | Additional Bag Limit Information |
|-----------|---------------|------------------------------|---------------------------|----------------------------|----------------|---------------------|---------------|---|
| | | | | | | Duck Bag/Poss | Coot Bag/Poss | |
| 2018 | 60 | Sep 29-Oct 5 Oct 13-Dec 4 | Oct 4-12 Oct 20-Dec 11 | Oct 13-19 Oct 17-Dec 18 | ½ SR-SS | 6/18 ^{*at} | 15/45 | *atOnly 4 Ma (2 Hn), 3 Wd, 1 Pt, 2 Rh,2 Bd, 2 Cb, & 3 Sc. 5 merg., only 2 Hm |
| Youth Day | | Sep 22-23 | Sep 29-30 | Oct 6-Oct 7 | ½ SR-SS | 6/18 ^{*at} | 15/45 | |
| Teal | | Sep 1-16 | Sep 1-16 | Sep 1-16 | SR-SS | 6/18 | | |
| 2019 | 60 | Sep 28-Oct 4 Oct 12-Dec 3 | Oct 5-11 Oct 19-Dec 10 | Oct 12-18 Oct 27-Dec 17 | ½ SR-SS | 6/18 ^{*at} | 15/45 | *atOnly 4 Ma (2 Hn), 3 Wd, 1 Pt, 2 Rh,2 Bd, 2 Cb, & 3 Sc. 5 merg., only 2 Hm |
| Youth Day | | Sep 21-22 | Sep 28-29 | Oct 5-Oct 6 | ½ SR-SS | 6/18 ^{*at} | 15/45 | |
| Teal | | Sep 1-16 | Sep 1-16 | Sep 1-16 | SR-SS | 6/18 | | |
| | | North Zone (5) | Central Zone (7) | South Zone (7) | | | | |
| 2020 | 60 | Sep 26-Oct 2 Oct 10-Dec 1 | Oct 3-9 Oct 17-Dec 8 | Oct 10-16 Oct 24-Dec 1 | ½ SR-SS | 6/18 ^{*at} | 15/45 | *atOnly 4 Ma (2 Hn), 3 Wd, 1 Pt, 2 Rh,2 Bd, 2 Cb, & 1 Sc. 1 st 15 days, 2 Sc. 45 days 5 merg., only 2 Hm |
| Youth Day | | Sep 19-20 | Sep 26-27 | Oct 3-Oct 4 | ½ SR-SS | 6/18 ^{*at} | 15/45 | |
| Teal | | Sep 1-16 | Sep 1-16 | Sep 1-16 | SR-SS | 6/18 | | |
| 2021 | 60 | Oct 2-8 Oct 16-Dec 7 | Oct 9-15 Oct 23-Dec 14 | Oct 16-22 Oct 30-Dec 21 | ½ SR-SS | 6/18 ^{*at} | 15/45 | *atOnly 4 Ma (2 Hn), 3 Wd, 1 Pt, 2 Rh,2 Bd, 2 Cb, & 1 Sc. 1 st 15 days, 2 Sc. 45 days 5 merg., only 2 Hm |
| Youth Day | | Sep 25-26 | Oct 2-3 | Oct 9-10 | ½ SR-SS | 6/18 ^{*at} | 15/45 | |
| Teal | | Sep 1-16 | Sep 1-16 | Sep 1-16 | SR-SS | 6/18 | | |
| 2022 | 60 | Oct 1-7 Oct 15-Dec 6 | Oct 8-14 Oct 22-Dec 13 | Oct 15-21 Oct 29-Dec 20 | ½ SR-SS | 6/18 ^{*at} | 15/45 | *atOnly 4 Ma (2 Hn), 3 Wd, 1 Pt, 2 Rh,2 Bd, 2 Cb, & 1 Sc. 1 st 15 days, 2 Sc. 45 days 5 merg., only 2 Hm |
| Youth Day | | Sep 24-25 | Oct 1-2 | Oct 8-9 | ½ SR-SS | 6/18 ^{*at} | 15/45 | |
| Teal | | Sep 1-16 | Sep 1-16 | Sep 1-16 | SR-SS | 6/18 | | |

DUCK SPECIES: Ma = Mallard, Wd = Wood duck, Bd = Black duck, Cb = Canvasback, Rh = Redhead, Ru = Ruddy duck, Bu = Bufflehead, Pt = Pintail, Wg = Wigeon, Sc = Scaup, Rn = Ring-necked duck Bt = Blue-winged teal, Gt = Green-winged teal, Ga = Gadwall, Sh = Shoveler, Ct = Cinnamon teal, Md = Mottled duck, (Hn = Hen, Dr = Drake) Cm = Common merganser, Rm = Red-breasted merganser, Hm = Hooded merganser

SHOOTING HOURS: SR to SS = sunrise to sunset, ½ SR to SS = ½ hour before sunrise to sunset, ¼ SR to ¼ SS = ¼ hour before sunrise to ¼ hour before sunset, ½ SR to 1 SS = ½ hour before sunrise to 1 hour before sunset. Shooting hours began at 12:00 pm (Noon) on opening day for hunting seasons 1931-33, 1947-54, & 1959-63. Iowa set daily shooting hours at sunrise or later during 27 of the 72 hunting seasons between 1918-89. Federal regulations set daily shooting hours at sunrise or later during 16 of the 90 hunting seasons between 1918-2007.

LIMIT: BAG = Daily bag limit,

POSS = Possession limit

POSS LIMIT = Twice the daily bag limit unless otherwise noted.

PS = Point System was used to determine the daily bag limit. The daily bag limit was obtained when the point value of the last duck taken, added to the point values of the previous ducks bagged, equaled or exceeded 100 points.

SPEC. REGULATIONS: Wood duck season was closed by Federal regulation from the 1918 through the 1940 season. Canvasback and redhead seasons were closed on the Mississippi River from 1975 thru 1979. Canvasback season was closed on the Mississippi River in 1980-82. Canvasback season closed on Pools 9 & 19 on the Mississippi River from 1983-85. Canvasback season closed statewide 1936-37, 1960-63, 1972, 1986-93, 2002, 2008.

DUCK ZONE BOUNDARY (1) = a line running from the Nebraska-Iowa border along I-80 to the Iowa-Illinois border.

DUCK ZONE BOUNDARY (2) = a line running from the Nebraska-Iowa border along St Hwy 175, east to St Hwy 37, southeast to US Hwy 59, south to I-80 and along I-80 to the Iowa-Illinois border.

DUCK ZONE BOUNDARY (3) = a line running from the Nebraska-Iowa border along St Hwy 175, east to St Hwy 37, southeast to St Hwy 183, northeast to St Hwy 141, east to US Hwy 30, and along US Hwy 30 to the Iowa-Illinois border.

DUCK ZONE BOUNDARY (4) = a line beginning on the South Dakota-Iowa border at I-29, southeast to Woodbury Co Rd D38, east to Woodbury Co Rd K45, southeast to St Hwy 175, east to St Hwy 37, southeast to St Hwy 183, northeast to St Hwy 141, east to US Hwy 30, and along US Hwy 30 to the Iowa-Illinois border.

DUCK ZONE BOUNDARY (5) = The North Zone is all of Iowa north of a line beginning on the on the South Dakota-Iowa border at I-29, southeast to St Hwy 175, east to St Hwy 37, southeast to St Hwy 183, northeast to St Hwy 141, east to US Hwy 30, and along US Hwy 30 to the Iowa-Illinois border. The Missouri River Zone includes all lands and water in Iowa west of I-29 and north of Hwy 175. The South Zone is the remainder of the state not in the North or Missouri River Zones.

DUCK ZONE BOUNDARY (6) = The North Zone is all of Iowa north of a line beginning on the on the South Dakota-Iowa border at I-29, southeast to St Hwy 175, east to St Hwy 37, southeast to St Hwy 183, northeast to St Hwy 141, east to US Hwy 30, and along US Hwy 30 to the Iowa-Illinois border. The Missouri River Zone includes all lands and water in Iowa west of I-29 and north of Hwy 175. The South Zone is the remainder of the state not in the North or Missouri River Zones.

DUCK ZONE BOUNDARY (7) = The North Zone is all of Iowa north of a line beginning on the on the South Dakota-Iowa border at I-29, southeast along I-29 to St Hwy 20 to the Iowa-Illinois border. The South Zone is that part of Iowa west of I-29 and south of St Hwy 92 east to the Iowa-Illinois border. The South Zone is the remainder of the state.

(*SH) = Steel shot required statewide for hunting all migratory gamebirds except woodcock.

STEEL SHOT REGULATIONS HISTORY: In 1977, no person could hunt waterfowl on all waters and a 150-yard zone thereto in Fremont and Mills Counties while possessing 12-gauge shotshells loaded with any shot other than steel. Drainage ditches, temporary sheet water and the Missouri River were exempt. During 1978 & 1979, no person could hunt waterfowl on all waters and a 150-yard zone thereto in Fremont and Mills Counties and on the Upper Mississippi Wildlife Refuge while possessing 12-gauge shotshells loaded with any shot other than steel. Drainage ditches, temporary sheet water, and the Missouri River in Mills and Fremont Counties were exempt. In 1980, Sweet Marsh in Bremer County, Big Marsh in Butler County, and the Princeton Area in Scott County, were added to the areas previously described in the steel shot regulations and the rule now applied to all shotgun gauges. In 1981, Green Island in Jackson County was added to the list of areas previously described where steel shot was required. During the 1982 through 1984 seasons, the previously described list of areas for steel shot remained the same. During the 1985 & 1986 seasons, no person could hunt migratory game birds except woodcock on any lands or waters under the jurisdiction of the State Conservation Commission, the US Government, or any county conservation board, or on all waters and a 150-yard zone adjacent to these waters, including reservoirs, lakes, ponds, marshes, bayous, swamps, rivers, streams, and seasonally flooded areas of all types, while possessing shotshells loaded with shot other than steel shot. Temporary sheet water, farm ponds less than 2 acres in size, and streams with water less than 25 feet in width where the hunting was occurring were exempt. In addition, no person could hunt waterfowl in the zone bounded on the west by the Missouri River, on the south by I-680, on the east by I-29 and on the north by the Soldier River, while possessing any shotshells loaded with shot other than steel shot. From 1987 to the present, no person could hunt migratory game birds except woodcock on all lands and waters within the State of Iowa while possessing any shotshell loaded with shot other than steel shot, or copper or nickel coated steel shot. In 1998, nontoxic shot was required for any shotgun shooting (except turkey hunting) on most DNR managed wildlife areas in Iowa's prairie pothole region that had waterfowl production potential.

(*HIP) = First year migratory bird hunters in Iowa registered (by phone) for the federal Harvest Information Program (HIP).

Table 4.4 Goose seasons in Iowa.

| Year | Goose Species | Season Length | Season Dates | Shooting Hours | Limit Bag/Poss | Additional Bag Limit Information |
|------------------|---------------|---------------|---------------|----------------|-------------------|--|
| Statewide | | | | | | |
| 1917 | Ca/Sn/Wf | 227 | Sep 1-Apr 15 | Unknown | ? | |
| 1918 | Ca/Sn/Wf | 107 | Sep 16-Dec 31 | SR-SS | 8/none | |
| 1919 | Ca/Sn/Wf | 107 | Sep 16-Dec 31 | SR-SS | 8/none | |
| 1920 | Ca/Sn/Wf | 107 | Sep 16-Dec 31 | SR-SS | 8/none | |
| 1921 | Ca/Sn/Wf | 107 | Sep 16-Dec 31 | SR-SS | 8/none | |
| 1922 | Ca/Sn/Wf | 107 | Sep 16-Dec 31 | SR-SS | 8/none | |
| 1923 | Ca/Sn/Wf | 107 | Sep 16-Dec 31 | SR-SS | 8/none | |
| 1924 | Ca/Sn/Wf | 107 | Sep 16-Dec 31 | ½ SR-SS | 8/50 WF | WF = all waterfowl combined |
| 1925 | Ca/Sn/Wf | 107 | Sep 16-Dec 31 | ½ SR-SS | 8/50 WF | |
| 1926 | Ca/Sn/Wf | 107 | Sep 16-Dec 31 | ½ SR-SS | 8/50 WF | |
| 1927 | Ca/Sn/Wf | 107 | Sep 16-Dec 31 | ½ SR-SS | 8/50 WF | |
| 1928 | Ca/Sn/Wf | 107 | Sep 16-Dec 31 | ½ SR-SS | 8/50 WF | |
| 1929 | Ca/Sn/Wf | 107 | Sep 16-Dec 31 | ½ SR-SS | 8/50 WF | |
| 1930 | Ca/Sn/Wf | 107 | Sep 16-Dec 31 | ½ SR-SS | 4/8 | |
| 1931 | Ca/Sn/Wf | 30 | Oct 20-Nov 19 | ½ SR-SS | 4/8 | |
| 1932 | Ca/Sn/Wf | 61 | Oct 1-Nov 30 | ½ SR-SS | 4/8 | |
| 1933 | Ca/Sn/Wf | 61 | Oct 1-Nov 30 | ½ SR-SS | 4/8 | |
| 1934 | Ca/Sn/Wf | 30 | Oct 10-Nov 18 | SR-SS | 4/8 | (included 10 rest days) |
| 1935 | Ca/Sn/Wf | 30 | Oct 21-Nov 19 | 7am-4pm | 4/4 | |
| 1936 | Ca/Sn/Wf | 30 | Nov 1-Nov 30 | 7am-4pm | 4/4 | |
| 1937 | Ca/Sn/Wf | 30 | Oct 9-Nov 7 | 7am-4pm | 5/5 | |
| 1938 | Ca/Sn/Wf | 45 | Oct 15-Nov 28 | 7am-4pm | 5/10 | |
| 1939 | Ca/Sn/Wf | 45 | Oct 22-Dec 5 | 7am-4pm | 4/8 | |
| 1940 | Ca/Sn/Wf | 60 | Oct 16-Dec 14 | SR-4pm | 3/6 | |
| 1941 | Ca/Sn/Wf | 60 | Oct 16-Dec 14 | SR-4pm | 3/6 | |
| 1942 | Ca/Sn/Wf | 70 | Oct 15-Dec 23 | SR-SS | 2/4 | |
| 1943 | Ca/Sn/Wf | 70 | Sep 25-Dec 3 | ½ SR-SS | 2/4 | |
| 1944 | Ca/Sn/Wf | 80 | Sep 20-Dec 8 | ½ SR-SS | 2/4* ^a | * ^a Sn goose poss. limit = 8. |

| Year | Goose Species | Season Length | Season Dates | Shooting Hours | Limit Bag/Poss | Additional Bag Limit Information |
|------|---------------|---------------|---------------|----------------|-------------------|---|
| 1945 | Ca/Sn/Wf | 80 | Sep 20-Dec 8 | ½ SR-SS | 2/4* ^a | |
| 1946 | Ca/Sn/Wf | 45 | Oct 26-Dec 9 | ½ SR-½ SS | 4/4* ^b | * ^b Closed Ca goose season. |
| 1947 | Ca/Sn/Wf | 30 | Oct 21-Nov 19 | ½ SR-1 SS | 4/4* ^c | * ^c Only 1 Ca or 1 Wf goose in bag. |
| 1948 | Ca/Sn/Wf | 30 | Oct 29-Nov 27 | ½ SR-1 SS | 4/4* ^c | |
| 1949 | Ca/Sn/Wf | 40 | Oct 21-Nov 29 | ½ SR-1 SS | 4/4* ^c | |
| 1950 | Ca/Sn/Wf | 35 | Oct 20-Nov 23 | ½ SR-1 SS | 4/4* ^c | |
| 1951 | Ca/Sn/Wf | 45 | Oct 12-Nov 25 | ½ SR-1 SS | 5/5* ^d | * ^d Only 2 Ca or 2 Wf, or 1 Ca & 1 Wf. |
| 1952 | Ca/Sn/Wf | 55 | Oct 8-Dec 1 | ½ SR-1 SS | 5/5* ^d | |
| 1953 | Ca/Sn/Wf | 55 | Oct 8-Dec 1 | ½ SR-SS | 5/5* ^d | |
| 1954 | Ca/Sn/Wf | 55 | Oct 15-Dec 8 | ½ SR-1 SS | 5/5* ^d | |
| 1955 | Ca/Sn/Wf | 70 | Oct 8-Dec 16 | ½ SR-½ SS | 5/5* ^d | |
| 1956 | Ca/Sn/Wf | 70 | Oct 6-Dec 14 | ½ SR-½ SS | 5/5* ^d | |
| 1957 | Ca/Sn/Wf | 70 | Oct 5-Dec 13 | ½ SR-SS | 5/5* ^d | |
| 1958 | Ca/Sn/Wf | 70 | Oct 4-Dec 12 | ½ SR-SS | 5/5* ^d | |
| 1959 | Ca/Sn/Wf | 70 | Oct 7-Dec 15 | SR-SS | 5/5* ^d | |
| 1960 | Ca/Sn/Wf | 70 | Oct 8-Dec 16 | ½ SR-SS | 5/5* ^d | |
| 1961 | Ca/Sn/Wf | 70 | Oct 7-Dec 15 | SR-SS | 5/5* ^d | |
| 1962 | Ca/Sn/Wf | 70 | Oct 6-Dec 14 | SR-SS | 5/5* ^d | |
| 1963 | Ca/Sn/Wf | 70 | Oct 5-Dec 13 | SR-SS | 5/5* ^d | |
| 1964 | Ca/Sn/Wf | 70 | Oct 3-Dec 11 | SR-SS | 5/5* ^d | |
| 1965 | Ca/Sn/Wf | 70 | Oct 2-Dec 10 | ½ SR-SS | 5/5* ^d | |
| 1966 | Ca/Sn/Wf | 70 | Oct 1-Dec 9 | ½ SR-SS | 5/5* ^d | |
| 1967 | Ca/Sn/Wf | 70 | Sep 30-Dec 8 | ½ SR-SS | 5/5* ^d | |
| 1968 | Ca/Sn/Wf | 70 | Sep 28-Dec 6 | ½ SR-SS | 5/5* ^d | |
| 1969 | Ca/Sn/Wf | 70 | Oct 4-Dec 12 | ½ SR-SS | 5/5* ^d | |
| 1970 | Ca | 23 | Oct 3-Nov 26 | SR-SS | 1/1* ^e | * ^e Bag & pos. lim.= 5 w/ only 1 Ca, 1 Ca + 1 WF, or 2 Wf. |
| | Sn/Wf | 70 | Oct 3-Dec 11 | | 5/5* ^e | |
| 1971 | Ca | 23 | Oct 9-Oct 31 | ½ SR-SS | 1/1* ^e | |
| | Sn/Wf | 70 | Oct 2-Dec 10 | | 5/5* ^e | |
| 1972 | Ca | 23 | Oct 1-Nov 9 | SR-SS | 1/2* ^f | |

| Year | Goose Species | Season Length | Season Dates | | Shooting Hours | Limit Bag/Poss | Additional Bag Limit Information |
|--------------------------------------|---------------|---------------|----------------------|--------------------|----------------|--------------------|---|
| | Sn/Wf | 70 | Oct 7-Dec 15 | | | 5/5* ^f | * ^f Bag lim.= 5 w/ only 1 Ca, 1 Ca + 1 WF, or 2 Wf. Pos. lim.= 5 w/ only 2 Ca, 1 Ca + 1 WF, or 2 Wf. |
| First year state duck stamp required | | | | | | | |
| 1973 | Ca | 40 | Oct 1-Nov 9 | | SR-SS | 1/2* ^g | * ^g Bag lim.= 5 w/ only 1 Ca & 2 Wf. Pos lim.= 5 w/ only 2 Ca & 2 Wf. |
| | Sn/Wf | 70 | Oct 1-Dec 9 | | | 5/5* ^g | |
| 1974 | Ca | 45 | Oct 1-Nov 14 | | SR-SS | 1/2* ^g | |
| | Sn/Wf | 70 | Oct 1-Dec 9 | | | 5/5* ^g | |
| 1975 | Ca | 45 | Oct 1-Nov 14 | | ½ SR-SS | 2/2* ^h | * ^h Bag lim.= 5 w/ only 2 Ca & 2 Wf. Pos lim.= Bag lim. |
| | Sn/Wf | 70 | Oct 1-Dec 9 | | | 5/10* ^h | |
| 1976 | Ca | 45 | Oct 1-Nov 14 | | ½ SR-SS | 5/10* ^h | |
| | Sn/Wf | 70 | Oct 1-Dec 9 | | | 5/10* ^h | |
| 1977 | Ca | 45 | Oct 1-Nov 14 | | SR-SS | 5/10* ^h | |
| | Sn/Wf | 70 | Oct 1-Dec 9 | | | 5/10* ^h | |
| 1978 | Ca/Sn/Wf | 70 | Oct 1-Dec 9 | | ½ SR-SS | 5/10* ^h | |
| 1979 | Ca/Sn/Wf | 70 | Sep 29-Dec 7 | | ½ SR-SS | 5/10* ^h | |
| 1980 | Ca/Sn/Wf | 70 | Oct 4-Dec 12 | | ½ SR-SS | 5/10* ⁱ | * ⁱ Bag lim.= 5 w/ only 2 Ca & 2 Wf. Pos lim.= 10 w/ only 4 Ca & 4 Wf. |
| 1981 | Ca/Sn/Wf | 70 | Oct 3-Dec 11 | | ½ SR-SS | 5/10* ⁱ | |
| 1982 | Ca/Sn/Wf | 70 | Oct 2-Dec 10 | | ½ SR-SS | 5/10* ⁱ | |
| 1983 | Ca/Sn/Wf | 70 | Oct 1-Dec 9 | | ½ SR-SS | 5/10* ⁱ | |
| | | | Most of State | SW Zone (1) | | | |
| 1984 | Ca/Sn/Wf | 70 | Sep 29-Dec 7 | Oct 13-Dec 21 | ½ SR-SS | 5/10* ⁱ | |
| 1985 | Ca/Sn/Wf | 70 | Sep 28-Dec 6 | Oct 12-Dec 20 | ½ SR-SS | 5/10* ⁱ | |
| 1986 | Ca/Sn/Wf | 70 | Oct 4-Dec 12 | Oct 18-Dec 26 | ½ SR-SS | 5/10* ⁱ | |
| 1987 | Ca | 45 | Oct 3-Nov 16 | Oct 17-Nov 30 | ½ SR-SS | 2/4* ⁱ | |
| (*SH) | Sn/Wf | 70 | Oct 3-Dec 11 | Oct 17-Dec 25 | | 5/10* ⁱ | |
| 1988 | Ca | 45 | Oct 1-Nov 14 | Oct 15-Nov 28 | SR-SS | 2/4* ⁱ | |
| | Sn/Wf | 70 | Oct 1-Dec 9 | Oct 15-Dec 23 | | 5/10* ⁱ | |
| | | | Most of State | SW Zone (2) | | | |
| 1989 | Ca | 45 | Sep 30-Nov 13 | Oct 14-Nov 27 | SR-SS | 2/4* ^j | * ^j Bag lim.= 7 w/ only 2 Ca & 2 Wf. Pos lim.= 14 w/ only 4 Ca & 4 Wf. |
| | Sn/Br | 80 | Sep 30-Dec 18 | Oct 14-Jan 1 | | 7/14* ^j | |
| | Wf | 70 | Sep 30-Dec 8 | Oct 14-Dec 22 | | 2/4* ^j | |

| Year | Goose Species | Season Length | Season Dates | | Shooting Hours | Limit Bag/Poss | Additional Bag Limit Information |
|----------------|---------------|---------------|------------------------|---|---|-------------------|--|
| 1990 | Ca/Wf/Br | 70 | Sep 29-Dec 7 | Oct 13-Dec 21 | ½ SR-SS | 2/4* ^j | |
| | Sn | 80 | Sep 29-Dec 17 | Oct 13-Dec 31 | | | |
| 1991 | Ca/Wf/Br | 70 | Sep 28-Dec 6 | Oct 12-Dec 20 | ½ SR-SS/1 | 2/4* ^j | |
| | Sn | 80 | Sep 28-Dec 16 | Oct 12-Dec 30 | | | |
| 1992 | Ca/Wf/Br | 70 | Oct 3-Dec 11 | Oct 10-Dec 18 | ½ SR-SS/1 | 2/4* ^j | |
| | Sn | 80 | Oct 3-Dec 21 | Oct 10-Dec 28 | | | |
| | | | North Zone (1) | South Zone (1) | | | |
| 1993 | Ca/Wf/Br | 55 | Oct 9-Dec 2 | Oct 23-Dec 16 | ½ SR-SS | 2/4* ^j | |
| | Sn | 80 | Oct 9-Dec 27 | Oct 23-Jan 10 | | | |
| 1994 | Ca/Wf/Br | 55 | Oct 8-Dec 1 | Oct 22-Dec 15 | ½ SR-SS | 2/4* ^j | |
| | Sn | 102 | Oct 1-Dec 10 | Oct 1-Jan 10 | | | |
| 1995 | Ca/Wf/Br | 70 | Sep 30-Dec 8 | Oct 14-Dec 22 | ½ SR-SS | 2/4* ^k | |
| | Sn | 107 | Sep 30-Jan 10 | Oct 14-Jan 10 | | | |
| | | | None | Feb 24-Mar 10, 1996 south of Interstate 80. | *k) Bag lim.= 10 w/ only 2 Ca & 2 Wf. Pos lim.= 20 w/ only 4 Ca & 4 Wf. | | |
| 1996 | Ca | 2 | Sep 14-15 | None | ½ SR-SS | 2/4* ^l | * ^l Bag lim.= 2 Ca. |
| | Ca/Wf/Br | 70 | Sep 28-Dec 6 | Oct 5-Oct 13 | ½ SR-SS | 2/4* ^m | * ^m Bag lim.= 2 Ca, 2 Wf, & 2 Br. Pos lim.= 4 Ca, 4 Wf, & 4 Br. |
| | Sn | 107 | | Oct 19-Dec 18 | | | |
| | | | | Oct 12-Jan 10, 1997 | ½ SR-SS | 10/30 | |
| | | | | Feb 22-Mar 9, 1997 | | | |
| 1997 | Ca | 2 | Sep 13-14 | None | ½ SR-SS | 2/4* ^l | |
| | Ca/Wf/Br | 70 | Oct 4-Dec 12 | Oct 4-Oct 12 | ½ SR-SS | 2/4* ^m | |
| | | | | Oct 18-Dec 17 | | | |
| | | | | Oct 4-Dec 31 | ½ SR-SS | 10/30 | |
| | | | | Feb 21-Mar 10, 1998 | | | |
| 1998 (*HIP) | Ca | 2 | Sep 12-13 ^b | None | ½ SR-SS | 2/4* ^l | |
| | Ca/Wf/Br | 70 | Oct 3-Dec 11 | Oct 3-Oct 11 | ½ SR-SS | 2/4* ^m | |
| | | | | Oct 17-Dec 16 | | | |
| | | | | Oct 3-Dec 31 | ½ SR-SS | 20/none | |
| | | | | Feb 20-Mar 10, 1999 | | | |
| | | | | March 11-April 16, 1999 | ½ SR-SS/½ | 20/none | |
| 1999 | Ca | 2 | Sep 11-12 ^b | None | ½ SR-SS | 2/4* ^l | |

| Year | Goose Species | Season Length | Season Dates | | Shooting Hours | Limit Bag/Poss | Additional Bag Limit Information |
|------|---------------|---------------|--------------------------------------|--------------------------------|----------------|--------------------|--|
| | Ca/Wf/Br | 70 | Oct 2-Dec 10 | Oct 2-Oct 10 Oct 16-Dec 15 | ½ SR-SS | 2/4* ^m | |
| | Sn/Ro | 107 | Oct 2-Dec 26 | | ½ SR-SS | 20/none | |
| | Sn/Ro | °Cons. Or. | Feb 19-Mar 10, 2000 | | | | |
| | Sn/Ro | °Cons. Or. | March 11-April 16, 2000 | | ½ SR-SS/½ | 20/none | |
| 2000 | Ca | 2 | Sep 9-10 ^b | None | ½ SR-SS | 2/4* ^l | |
| | Ca/Wf/Br | 70 | Sep 30-Dec 8 | Sep 30-Oct 15 Nov 4-Dec 27 | ½ SR-SS | 2/4* ^m | |
| | Sn/Ro | 107 | Sep 30-Jan 14, 2001 | | ½ SR-SS | 20/none | |
| | Sn/Ro | °Cons. Or. | Feb 15-April 15, 2001 | | ½ SR-SS/½ | 20/none | |
| 2001 | Ca/Wf/Br | 70 | Sep 29-Dec 7 | Sep 29-Oct 21 Nov 10-Dec 26 | ½ SR-SS | 2/4* ^m | |
| | Sn/Ro | 107 | Sep 29-Jan 13, 2002 | | ½ SR-SS | 20/none | |
| | Sn/Ro | °Cons. Or. | Feb 2-April 15, 2002 | | ½ SR-SS/½ | 20/none | |
| 2002 | Ca/Wf/Br | 70 | Sep 28-Dec 6 | Sep 28-Oct 20 Nov 9-Dec 25 | ½ SR-SS | 2/4* ^m | * ^m Bag lim.= 2 Ca, 2 Wf, & 2 Br. Pos lim.= 4 Ca, 4 Wf, & 4 Br. |
| | Sn/Ro | 107 | Sep 28-Jan 12, 2003 | | ½ SR-SS | 20/none | |
| | Sn/Ro | °Cons. Or. | Feb 1-April 15, 2003 | | ½ SR-SS/½ | 20/none | |
| 2003 | Ca | 15 | Sep 1-15 in metro zones ^d | | ½ SR-SS | 3/6* ⁿ | * ⁿ Bag lim.= 3 Ca. |
| | Ca & Br | 70 | Sep 27-Dec 5 | Sep 27-Oct 19 Nov 8-Dec 24 | ½ SR-SS | 2/4 * ^o | * ^o Bag lim.= 2 Ca & 2 Br. Pos lim.= 4 Ca & 4 Br. |
| | Wf | 86 | Sept 27-Dec 21 | Sept 27-Dec 21 | ½ SR-SS | 2/4 | |
| | Sn/Ro | 107 | Sep 27-Jan 11, 2004 | | ½ SR-SS | 20/none | |
| | Sn/Ro | °Cons. Or. | Jan 12-April 15, 2004 | | ½ SR-SS/½ | 20/none | |
| | | | North Zone (2) | South Zone (2) | | | |
| 2004 | Ca | 15 | Sep 1-15 in metro zones ^d | | ½ SR-SS | 3/6* ⁿ | |
| | Ca | 2 | Sep 11-12 | None | ½ SR-SS | 2/4* ^l | * ^l Bag lim.= 2 Ca. |
| | Ca & Br | 60 | Sep 25-Oct 3 | Oct 2-10 | ½ SR-SS | 2/4* ^o | |
| | | | Oct 16-Dec 5 | Oct 30-Dec 19 | | | |

| Year | Goose Species | Season Length | Season Dates | | Shooting Hours | Limit Bag/Poss | Additional Bag Limit Information |
|------|---------------|---------------|--------------------------------------|---------------|----------------|--------------------|--|
| | Wf | 86 | Sept 25-Dec 19 | Oct 2-Dec 26 | ½ SR-SS | 2/4 | |
| | Sn/Ro | 107 | Sep 25-Jan 9, 2005 | | ½ SR-SS | 20/none | |
| | Sn/Ro | °Cons. Or. | Jan 10-April 15, 2005 | | ½ SR-SS/½ | 20/none | |
| 2005 | Ca | 15 | Sep 1-15 in metro zones ^d | | ½ SR-SS | 3/6* ⁿ | |
| | Ca | 2 | Sep 10-11 | Sep 10-11 | ½ SR-SS | 2/4* ⁱ | |
| | Ca & Br | 70 | Oct 1-9 | Oct 1-9 | ½ SR-SS | 2/4* ^o | |
| | | | Oct 15-Dec 4 | Oct 22-Dec 4 | | | |
| | | | Dec 24-Jan 2 | Dec 24-Jan 9 | | | |
| | Wf | 72 | Oct 1-Dec 11 | Oct 1-Dec 11 | ½ SR-SS | 2/4 | |
| | Sn/Ro | 107 | Oct 1-Jan 15, 2006 | | ½ SR-SS | 20/none | |
| | Sn/Ro | °Cons. Or. | Jan 16-April 15, 2006 | | ½ SR-SS/½ | 20/none | |
| 2006 | Ca | 15 | Sep 1-15 in metro zones ^d | | ½ SR-SS | 3/6* ⁿ | |
| | Ca | 2 | Sep 9-10 | Sep 9-10 | ½ SR-SS | 2/4* ⁱ | |
| | Ca & Br | 90 | Sep 30-Dec 10 | Sep 30-Oct 8 | ½ SR-SS | 2/4* ^p | * ^p Bag lim.= 2 Ca & 1 Br. Pos lim.= 4 Ca & 2 Br. |
| | | | Dec 16-Jan 2 | Oct 21-Jan 9 | | | |
| | Wf | 72 | Sep 30-Dec 10 | Sep 30-Dec 10 | ½ SR-SS | 2/4 | |
| | Sn/Ro | 107 | Sep 30-Jan 14, 2007 | | ½ SR-SS | 20/none | |
| | Sn/Ro | °Cons. Or. | Jan 15-April 15, 2007 | | ½ SR-SS/½ | 20/none | |
| 2007 | Ca | 15 | Sep 1-15 in metro zones ^d | | ½ SR-SS | 5/10* ^q | * ^q Bag lim.= 5 Ca. |
| | Ca | 2 | Sep 8-9 | Sep 8-9 | ½ SR-SS | 2/4* ⁱ | |
| | Ca & Br | 90 | Sep 29-Dec 9 | Sep 29-Oct 7 | ½ SR-SS | 2/4* ^p | |
| | | | Dec 15-Jan 1 | Oct 20-Jan 8 | | | |
| | Wf | 72 | Sep 29-Dec 9 | Sep 29-Dec 9 | ½ SR-SS | 2/4 | |
| | Sn/Ro | 107 | Sep 29-Jan 13, 2008 | | ½ SR-SS | 20/none | |
| | Sn/Ro | °Cons. Or. | Jan 14-April 15, 2008 | | ½ SR-SS/½ | 20/none | |
| 2008 | Ca | 15 | Sep 1-15 in metro zones ^e | | ½ SR-SS | 5/10* ^q | |
| | Ca & Br | 90 | Sep 27-Oct 5 | Sep 27-Oct 5 | ½ SR-SS | 2/4* ^p | |
| | | | Oct 18-Dec 21 | Oct 18-Dec 21 | | | |
| | | | Dec 27-Jan 11 | Dec 27-Jan 11 | | | |
| | Wf | 72 | Sep 27-Dec 7 | Sep 27-Dec 7 | ½ SR-SS | 2/4 | |
| | Sn/Ro | 107 | Sep 27-Jan 11, 2009 | | ½ SR-SS | 20/none | |

| Year | Goose Species | Season Length | Season Dates | | | Shooting Hours | Limit Bag/Poss | Additional Bag Limit Information |
|-------|------------------------|------------------------|--------------------------------------|-----------------------|---------------------------|----------------|-----------------------|--|
| 2009 | Sn/Ro | ^c Cons. Or. | Jan 12-April 15, 2009 | | | ½ SR-SS/½ | 20/none | |
| | | | North Zone (3) | South Zone (3) | | | | |
| | Ca | 15 | Sep 1-15 in metro zones ^e | | | ½ SR-SS | 5/10* ^q | |
| | Ca & Br | 90 | Sep 26-Oct 4 | Sep 26-Oct 4 | | ½ SR-SS | 2/4* ^p | |
| | | | Oct 10-Dec 13 | Oct 17-Dec 13 | | | | |
| | | | Dec 19-Jan 3 | Dec 19-Jan 10 | | | | |
| | Wf | 72 | Sep 26-Dec 6 | Sep 26-Dec 6 | | ½ SR-SS | 2/4 | |
| Sn/Ro | 107 | Sep 26-Jan 10, 2010 | | | ½ SR-SS | 20/none | | |
| Sn/Ro | ^c Cons. Or. | Jan 11-April 15, 2010 | | | ½ SR-SS/½ | 20/none | | |
| 2010 | Ca | 9 | Sep 4-12 in metro zones ^e | | | ½ SR-SS | 5/10* ^q | |
| | Ca & Br | 98 | Sep 25-Oct 10 | Oct 2-Oct 17 | | ½ SR-SS | 2-3/4-6* ^r | * ^r Bag lim.= 2 Ca & 1 Br through Oct. 31 and 3 Ca & 1 Br thereafter. |
| | | | Oct 16-Jan 5 | Oct 23-Jan 12 | | | | |
| | Wf | 72 | Sep 25-Dec 5 | Oct 2-Dec 12 | | ½ SR-SS | 2/4 | |
| | Sn/Ro | 107 | Sep 25-Jan 9 | Oct 2-Jan 14 | | ½ SR-SS | 20/none | |
| | Sn/Ro | ^c Cons. Or. | Jan 15-April 15, 2011 | | | ½ SR-SS/½ | 20/none | |
| 2011 | | | North Zone (4) | South Zone (4) | | | | |
| | Ca | 9 | Sep 3-11 in metro zones ^e | | | ½ SR-SS | 5/10 * ^q | |
| | Ca & Br | 98 | Sep 24-Oct 9 | Oct 1-Oct 16 | | ½ SR-SS | 2-3/4-6* ^r | * ^r Bag lim.= 2 Ca & 1 Br through Oct. 31 and 3 Ca & 1 Br thereafter. |
| | | | Oct 15-Jan 4 | Oct 22-Jan 11 | | | | |
| | Wf | 74 | Sep 24-Dec 6 | Oct 1-Dec 13 | | ½ SR-SS | 2/4 | |
| | Sn/Ro | 107 | Sep 24-Jan 8 | Oct 1-Jan 13 | | ½ SR-SS | 20/none | |
| Sn/Ro | ^c Cons. Or. | Jan 14-April 15, 2012 | | | ½ SR-SS/½ | 20/none | | |
| 2012 | | | North Zone (5) | South Zone (5) | Missouri River (5) | | | |
| | Ca | 9 | Sep 1-9 in metro zones ^e | | | ½ SR-SS | 5/10* ^q | |
| | Ca & Br | 98 | Sep 29-Dec 11 | Oct 6-Jan 11 | Oct 13-Jan 18 | ½ SR-SS | 2-3/4-6* ^r | * ^r Bag lim.= 2 Ca & 1 Br through Oct. 31 and 3 Ca & 1 Br thereafter. |
| | Wf | 74 | Sep 29-Dec 11 | Oct 6-Dec 18 | Oct 13-Dec. 25 | ½ SR-SS | 2/4 | |
| | Sn/Ro | 107 | Sep 24-Jan 8 | Oct 1-Jan 13 | Oct 13-Jan 18 | ½ SR-SS | 20/none | |
| Sn/Ro | ^c Cons. Or. | Jan 14-April 15, 2013 | | | ½ SR-SS | 20/none | | |
| 2013 | Ca | 9 | Sep 7-15 in metro zones ^e | | | ½ SR-SS | 5/15* ^q | |
| | Ca & Br | 98 | Sep 28-Jan 3, | Oct 5-Jan 10 | Oct 12-Jan 17 | ½ SR-SS | 2-3/6-9* ^r | * ^r Bag lim.= 2 Ca & 1 Br through Oct. 31 and 3 Ca & 1 Br thereafter. |
| | Wf | 74 | Sep 28-Dec 10 | Oct 5-Dec 17 | Oct 12-Dec. 24 | ½ SR-SS | 2/6 | |

| Year | Goose Species | Season Length | Season Dates | | | Shooting Hours | Limit Bag/Poss | Additional Bag Limit Information |
|------|---------------|---------------|--------------------------------------|---------------|----------------|----------------|-----------------------|--|
| | Sn/Ro | 107 | Sep 28-Jan 12 | Oct 5-Jan 17 | Oct 12-Jan 17 | ½ SR-SS | 20/none | |
| | Sn/Ro | °Cons. Or. | Jan 18-April 15, 2014 | | | ½ SR-SS | 20/none | |
| 2014 | Ca | 9 | Sep 6-14 in metro zones ^e | | | ½ SR-SS | 5/15* ^q | |
| | Ca & Br | 98 | Sep 27-Jan 2, | Oct 4-Jan 9 | Oct 11-Jan 16 | ½ SR-SS | 2-3/6-9* ^r | * ^r Bag lim.= 2 Ca & 1 Br through Oct. 31 and 3 Ca & 1 Br thereafter. |
| | Wf | 74 | Sep 27-Dec 9 | Oct 4-Dec 16 | Oct 11-Dec. 23 | ½ SR-SS | 2/6 | |
| | Sn/Ro | 107 | Sep 27-Jan 11 | Oct 4-Jan 16 | Oct 11-Jan 16 | ½ SR-SS | 20/none | |
| | Sn/Ro | °Cons. Or. | Jan 17-April 15, 2015 | | | ½ SR-SS | 20/none | |
| 2015 | Ca | 9 | Sep 5-13 in metro zones ^e | | | ½ SR-SS | 5/15* ^q | |
| | Ca & Br | 98 | Sep 26-Jan 1 | Oct 3-Jan 8 | Oct 10-Jan 15 | ½ SR-SS | 2-3/6-9* ^r | * ^r Bag lim.= 2 Ca & 1 Br through Oct. 31 and 3 Ca & 1 Br thereafter. |
| | Wf | 74 | Sep 26-Jan 1 | Oct 3-Jan 8 | Oct 10-Jan 15 | ½ SR-SS | 5/15* ^{**} | |
| | Sn/Ro | 107 | Sep 26-Jan 10 | Oct 3-Jan 15 | Oct 3-Jan 15 | ½ SR-SS | 20/none | |
| | Sn/Ro | °Cons. Or. | Jan 16-April 15, 2016 | | | ½ SR-SS | 20/none | |
| 2016 | Ca | 9 | Sep 3-11 in metro zones ^e | | | ½ SR-SS | 5/15* ^q | |
| | Dark Geese | 98 | Sep 24-Oct 9 | Oct 1-9 | Oct 8-16 | ½ SR-SS | 5/15* ^r | * ^r Aggregate bag lim.= 2 Ca through Oct. 31 and 3 Ca, 5 Wf, & 1 Br thereafter. |
| | | | Oct 15-Jan 4 | Oct 22-Jan 18 | Oct 22-Jan 18 | ½ SR-SS | | |
| | Sn/Ro | 107 | Sep 24-Oct 9 | Oct 1-9 | Oct 8-16 | ½ SR-SS | 20/none | |
| | | | Oct 15-Jan 13 | Oct 22-Jan 27 | Oct 22-Jan 27 | ½ SR-SS | 20/none | |
| | Sn/Ro | °Cons. Or. | Jan 28-April 15, 2017 | | | ½ SR-SS | 20/none | |
| 2017 | Ca | 9 | Sep 2-10 in metro zones ^e | | | ½ SR-SS | 5/15* ^q | |
| | Dark Geese | 98 | Sep 23-Oct 8 | Sep 30-8 | | ½ SR-SS | 5/15* ^r | * ^r Aggregate bag lim.= 2 Ca through Oct. 31 and 3 Ca, 5 Wf, & 1 Br thereafter. |
| | | | Oct 14-Jan 1 | Oct 21-Jan 15 | | ½ SR-SS | | |
| | Sn/Ro | 107 | Sep 23-Oct 8 | Sep 30 1-8 | | ½ SR-SS | 20/none | |
| | | | Oct 14-Jan 10 | Oct 21-Jan 24 | | ½ SR-SS | 20/none | |
| | Sn/Ro | °Cons. Or. | Jan 25-April 15, 2018 | | | ½ SR-SS | 20/none | |
| 2018 | Ca | 9 | Sep 1-9 in metro zones ^e | | | ½ SR-SS | 5/15* ^q | |
| | Dark Geese | 98 | Sep 22-Oct 7 | Sep 29-Oct 14 | | ½ SR-SS | 5/15* ^r | * ^r Aggregate bag lim.= 2 Ca through Oct. 31 and 3 Ca, 5 Wf, & 1 Br thereafter. |
| | Sn/Ro | | Oct 13-Dec 4 | Oct 20-Dec 11 | | ½ SR-SS | 20/none | |
| | | | Dec 15-Jan 12 | Dec 22-Jan 19 | | ½ SR-SS | 20/none | |
| | Sn/Ro | °Cons. Or. | Jan 27-April 15, 2019 | | | ½ SR-SS | 20/none | |
| 2019 | Ca | 9 | Sep 7-15 in metro zones ^e | | | ½ SR-SS | 5/15* ^q | |
| | Dark Geese | 98 | Sep 21-Oct 6 | Sep 28-Oct 13 | | ½ SR-SS | 5/15* ^r | |

| Year | Goose Species | Season Length | Season Dates | | | Shooting Hours | Limit Bag/Poss | Additional Bag Limit Information |
|------|---------------|---------------|---------------------------------------|---------------|---------------|----------------|--------------------|--|
| | Sn/Ro | | Oct 12-Dec 3 | Oct 19-Dec 10 | | ½ SR-SS | 20/none | *rAggregate bag lim.= 2 Ca through Oct. 31 and 3 Ca, 5 Wf, & 1 Br thereafter. |
| | | | Dec 14-Jan 11 | Dec 21-Jan 18 | | ½ SR-SS | 20/none | |
| | Sn/Ro | °Cons. Or. | Jan 26-April 15, 2020 | | | ½ SR-SS | 20/none | |
| 2020 | Ca | 9 | Sep 5-13 in metro zones ^e | | | ½ SR-SS | 5/15* ^q | |
| | Dark Geese | 98 | Sep 19-Oct 4 | Sep 26-Oct 11 | Oct 3-18 | ½ SR-SS | 5/15* ^r | *rAggregate bag lim.= 2 Ca through Oct. 31 and 3 Ca, 5 Wf, & 1 Br thereafter. |
| | Sn/Ro | | Oct 10-Dec 1 | Oct 17-Dec 8 | Oct 24-Dec 15 | ½ SR-SS | 20/none | |
| | | | Dec 12-Jan 9 | Dec 19-Jan 16 | Dec 26-Jan 23 | ½ SR-SS | 20/none | |
| | Sn/Ro | °Cons. Or. | Jan 26-May 1, 2021 | | | ½ SR-SS | 20/none | |
| 2021 | Ca | 9 | Sep 4-12 in metro zones ^e | | | ½ SR-SS | 5/15* ^q | |
| | Dark Geese | 98 | Sep 25-Oct 10 | Oct 2-17 | Oct 9-24 | ½ SR-SS | 5/15* ^r | *rAggregate bag lim.= 2 Ca through Oct. 31 and 3 Ca, 5 Wf, & 1 Br thereafter. |
| | Sn/Ro | | Oct 16-Dec 7 | Oct 23-Dec 14 | Oct 30-Dec 21 | ½ SR-SS | 20/none | |
| | | | Dec 11-Jan 8 | Dec 18-Jan 15 | Dec 25-Jan 22 | ½ SR-SS | 20/none | |
| | Sn/Ro | °Cons. Or. | Jan 23-May 1, 2022 | | | ½ SR-SS | 20/none | |
| 2022 | Ca | 9 | Sep 10-18 in metro zones ^e | | | ½ SR-SS | 5/15* ^q | |
| | Dark Geese | 98 | Sep 24-Oct 9 | Oct 1-16 | Oct 8-23 | ½ SR-SS | 5/15* ^r | *rAggregate bag lim.= 2 Ca & 1 Br through Oct. 31 and 3 Ca, 5 Wf, & 1 Br thereafter. |
| | Sn/Ro | | Oct 15-Dec 6 | Oct 22-Dec 13 | Oct 29-Dec 20 | ½ SR-SS | 20/none | |
| | | | Dec 10-Jan 7 | Dec 17-Jan 14 | Dec 24-Jan 21 | ½ SR-SS | 20/none | |
| | Sn/Ro | °Cons. Or. | Jan 22-May 1, 2022 | | | ½ SR-SS | 20/none | |

GOOSE SPECIES: Ca = Canada goose, Sn = Snow goose, Wf = White-fronted goose, Br = Brant, Ro = Ross's goose

SEASON LENGTH: Maximum number of days the season could be open.

SHOOTING HOURS: SR-SS = sunrise to sunset, ½ SR-SS = ½ hour before sunrise to sunset, ½ SR-½ SS = ½ hour before sunrise to ½ hour before sunset, ½ SR-1 SS = ½ hour before sunrise to 1 hour before sunset. ½ SR to SS/1 = ½ hour before sunrise to sunset in all of state except SW Zone where shooting hours were ½ hour before sunrise to 1pm until Dec. 1 in 1991 and until Nov. 29 in 1992, then ½ hour before sunrise to sunset thereafter. ½ SR-SS ½ = ½ hour before sunrise to ½ hour after sunset.

LIMIT: BAG = Daily bag limit, **POSS** = Possession limit

SW ZONE(1) = that portion of the state south and west of a line running from the Iowa-Missouri state line along US Hwy 71 to St Hwy 92 and west on Hwy 92 to the Nebraska-Iowa border.

SW ZONE(2) = that portion of the state south and west of a line running from the Iowa-Missouri state line along US Hwy 71 to I-80, west on I-80 to US Hwy 59, north on US Hwy 59 to St Hwy 37, then NW on Hwy 37 to St Hwy 175, and west on Hwy 175 to the Nebraska-Iowa border.

GOOSE ZONE BOUNDARY (1) = a line running from the Nebraska-Iowa border along St Hwy 175, southeast to St Hwy 37, east to US Hwy 59, south to I-80, and along I-80 to the Iowa-Illinois border. This was the same boundary used to divide the north and south duck zones during 1993-2003.

GOOSE ZONE BOUNDARY (2) = a line running from the Nebraska-Iowa border along St Hwy 20. This change was made in the 2004 season and was maintained through the 2008 season.

GOOSE ZONE BOUNDARY (3) = a line running from the Nebraska-Iowa border along St Hwy 175, east to St Hwy 37, southeast to St Hwy 183, northeast to St Hwy 141, east to US Hwy 30, and along US Hwy 30 to the Iowa-Illinois border. The duck and goose zone boundaries were identical from 1993-2003. The goose zone boundary was moved to Hwy 20 from 2004-2008. In 2009, the goose zone boundary was changed to match the duck zone boundary, i.e., along Hwy 30.

GOOSE ZONE BOUNDARY (4) = a line beginning on the South Dakota-Iowa border at Interstate 29, southeast to Woodbury Co Rd D38, east to Woodbury Co Rd K45, southeast to St Hwy 175, east to St Hwy 37, southeast to St Hwy 183, northeast to St Hwy 141, east to US Hwy 30, and along US Hwy 30 to the Iowa-Illinois border.

GOOSE ZONE BOUNDARY (5) = The North Zone is all of Iowa north of a line beginning on the on the South Dakota-Iowa border at I-29, southeast to St Hwy 175, east to St Hwy 37, southeast to St Hwy 183, northeast to St Hwy 141, east to US Hwy 30, and along US 30 to the Iowa-Illinois border. The Missouri River Zone includes all lands and water in Iowa west of I-29 and north of Hwy 175. The South Zone is the remainder of the state not in the North or Missouri River Zones.

(*SH) Steel shot required statewide for hunting all migratory gamebirds except woodcock. See Iowa's Duck and Coot Seasons for a complete history of steel shot regulations in Iowa.

(*HIP) First year migratory bird hunters in Iowa registered (by phone) for the federal Harvest Information Program (HIP).

SPECIAL REGULATIONS: Ross's goose season was closed by Federal regulation from 1942-61.

^aThe daily limit was 2 Canada geese through Oct. 31 and 1 thereafter except in the south zone where it was 2 after Nov. 30.

^bThe special 2-day September Canada goose season was only open in the north zone west of Hwy 63.

^cA conservation order was issued by the USFWS to permit the taking of light geese (snow + ross) after the regular season, including after March 10, the last day regular waterfowl seasons can be open. Hunters could use electronic calls and unplugged shotguns and hunt until ½ hour after sunset. Hunters had to be fully licensed to hunt waterfowl in Iowa (no Fed. Mig. Bird stamp) and registered with HIP.

^dThis special September Canada goose season was only open in the Des Moines and Cedar Rapids/Iowa City zones.

^eThis special September Canada goose season was only open in the Des Moines, Cedar Rapids/Iowa City and Cedar Falls/Waterloo zones.

Table 4.5 Waterfowl banded in Iowa. (Numbers include both state and federal bandings.)

| Year | Canada Geese | Mallards | Wood Ducks | Blue-winged Teal | Trumpeter Swans | Other Waterfowl Species | Total Waterfowl | Mourning Doves |
|------|--------------|----------|------------|------------------|-----------------|-------------------------|-----------------|----------------|
| 1964 | 51 | 440 | 488 | 6,046 | | 273 | 7,298 | 0 |
| 1965 | 32 | 533 | 571 | 4,485 | | 120 | 5,741 | 0 |
| 1966 | 61 | 504 | 564 | 3,836 | | 172 | 5,137 | 0 |
| 1967 | 66 | 1,928 | 410 | 4,022 | | 113 | 6,539 | 0 |
| 1968 | 91 | 1,809 | 315 | 3,716 | | 63 | 5,994 | 0 |
| 1969 | 53 | 2,282 | 414 | 1,634 | | 135 | 4,518 | 0 |
| 1970 | 143 | 2,368 | 935 | 2,649 | | 236 | 6,331 | 0 |
| 1971 | 301 | 1,901 | 1,644 | 1,395 | | 330 | 5,571 | 0 |
| 1972 | 148 | 672 | 1,381 | 1,000 | | 127 | 3,328 | 0 |
| 1973 | 410 | 1,022 | 1,665 | 601 | | 115 | 3,813 | 0 |
| 1974 | 268 | 522 | 1,333 | 638 | | 34 | 2,795 | 0 |
| 1975 | 222 | 563 | 2,026 | 248 | | 164 | 3,223 | 0 |
| 1976 | 544 | 3,165 | 1,620 | 334 | | 19 | 5,682 | 0 |
| 1977 | 799 | 678 | 1,261 | 223 | | 25 | 2,986 | 0 |
| 1978 | 633 | 4,418 | 1,765 | 1,022 | | 98 | 7,936 | 0 |
| 1979 | 409 | 4,683 | 1,490 | 509 | | 3 | 7,094 | 0 |
| 1980 | 775 | 2,175 | 1,302 | 1,880 | | 85 | 6,217 | 0 |
| 1981 | 736 | 350 | 1,523 | 919 | | 86 | 3,614 | 0 |
| 1982 | 975 | 99 | 2,747 | 26 | | 1 | 3,848 | 0 |
| 1983 | 1,444 | 446 | 2,411 | 35 | | 3 | 4,339 | 0 |
| 1984 | 1,293 | 110 | 2,489 | 38 | | 6 | 3,936 | 0 |
| 1985 | 1,710 | 389 | 1,953 | 30 | | 1 | 4,083 | 0 |
| 1986 | 1,847 | 383 | 2,623 | 18 | | 3 | 4,874 | 0 |
| 1987 | 2,127 | 380 | 2,199 | 98 | | 8 | 4,812 | 0 |
| 1988 | 2,421 | 349 | 2,115 | 37 | | 2 | 4,924 | 0 |
| 1989 | 1,712 | 70 | 2,636 | 0 | | 0 | 4,418 | 0 |
| 1990 | 1,556 | 13 | 1,908 | 64 | | 0 | 3,541 | 0 |
| 1991 | 1,880 | 151 | 4,874 | 0 | | 0 | 6,905 | 0 |
| 1992 | 2,043 | 392 | 3,776 | 0 | | 13 | 6,224 | 0 |
| 1993 | 2,538 | 130 | 2,931 | 0 | | 1 | 5,600 | 0 |
| 1994 | 3,737 | 146 | 3,631 | 0 | | 0 | 7,514 | 0 |
| 1995 | 3,671 | 221 | 6,717 | 0 | | 0 | 10,609 | 0 |
| 1996 | 3,809 | 263 | 4,188 | 0 | | 0 | 8,260 | 0 |
| 1997 | 4,852 | 77 | 4,375 | 0 | | 0 | 9,304 | 0 |
| 1998 | 4,462 | 292 | 4,837 | 0 | 58 | 0 | 9,649 | 0 |
| 1999 | 6,073 | 229 | 4,669 | 0 | 46 | 0 | 11,017 | 0 |
| 2000 | 2,971 | 133 | 2,380 | 0 | 90 | 0 | 5,574 | 0 |
| 2001 | 2,942 | 60 | 3,711 | 0 | 78 | 0 | 6,791 | 0 |
| 2002 | 3,479 | 338 | 3,146 | 207 | 68 | 0 | 7,238 | 0 |
| 2003 | 4,066 | 259 | 4,048 | 0 | 87 | 0 | 8,460 | 1987 |
| 2004 | 3,338 | 143 | 4,769 | 0 | 91 | 0 | 8,341 | 2326 |
| 2005 | 4,983 | 338 | 2,823 | 0 | 113 | 0 | 8,257 | 2079 |
| 2006 | 4,203 | 210 | 2,729 | 0 | 78 | 0 | 7,220 | 1000 |
| 2007 | 4,283 | 231 | 2,321 | 0 | 73 | 0 | 6,908 | 986 |

| Year | Canada Geese | Mallards | Wood Ducks | Blue-winged Teal | Trumpeter Swans | Other Waterfowl Species | Total Waterfowl | Mourning Doves |
|----------------|--------------|----------|------------|------------------|-----------------|-------------------------|-----------------|----------------|
| 2008 | 3,288 | 157 | 2,402 | 100 | 69 | 0 | 6,016 | 1,699 |
| 2009 | 3,593 | 31 | 2,552 | 0 | 81 | 0 | 6,257 | 1,266 |
| 2010 | 3,568 | 8 | 2,770 | 0 | 69 | 0 | 6,415 | 1,084 |
| 2011 | 3,765 | 40 | 2,252 | 0 | 51 | 0 | 6,108 | 2,227 |
| 2012 | 3,586 | 254 | 2,917 | 0 | 20 | 0 | 6,777 | 2,205 |
| 2013 | 3,483 | 16 | 3,355 | 0 | 20 | 0 | 6,874 | 2,080 |
| 2014 | 3,464 | 293 | 2,093 | 0 | 18 | 0 | 5,868 | 1,976 |
| 2015 | 3,421 | 34 | 3,301 | 0 | 18 | 0 | 6,774 | 1,929 |
| 2016 | 3,945 | 51 | 2,096 | 0 | 5 | 0 | 6,097 | 1,914 |
| 2017 | 4,310 | 0 | 1,633 | 0 | 0 | 0 | 5,943 | 2,212 |
| 2018 | 4,374 | 0 | 1,204 | 0 | 0 | 0 | 5,578 | 1,882 |
| 2019 | 4,110 | 0 | 2,199 | 0 | 0 | 0 | 6,309 | 2,025 |
| 2020 | 3,665 | 0 | 2,350 | 0 | 51 | 0 | 6,066 | 2,001 |
| 2021 | 4,462 | 0 | 1,381 | 0 | 22 | 0 | 5,865 | 1,902 |
| 2022 | 3,921 | 0 | 2,779 | 0 | 0 | 0 | 6,700 | 2,142 |
| Totals | 141,112 | 36,749 | 142,997 | 35,810 | 1,206 | 2,236 | 360,110 | 36,922 |
| Recent 10-year | | | | | | | | |
| Avg | 3,784 | 66 | 2,397 | 0 | 26 | 0 | 6,273 | 1,891 |