

# 2022-2023 Waterfowl Program Report

Orrin E. Jones III, Iowa Department of Natural Resources, 1203 N Shore Dr, Clear Lake, IA 50428

## Duck Breeding Populations

Breeding population estimates are made each year for 10 key species of ducks in the principal breeding areas of Alaska, Canada, and the northcentral United States (Table 4.1, Figure 4.1). Surveys are conducted in May and early June by the U.S. Fish and Wildlife Service (USFWS), Canadian Wildlife Service, and provincial and state conservation agencies. Ducks are counted from fixed-wing aircraft on the same transects each year. Estimates of ducks and ponds seen from the air are corrected for visibility bias by conducting ground counts on a sample of transects. The estimates in Table 4.1 are not the entire continental breeding populations of ducks; a portion of each population (potentially 25% for mallards) nests outside the surveyed areas.

Many surveys did not occur in 2020 and 2021 due to the Covid-19 pandemic. This created an unprecedented situation where population estimates were unavailable for many species. At the same time, the northern prairies experienced a significant drought, which negatively impacted wetland habitat throughout north-central North America. Fortunately, the northern prairies received significant precipitation and surveys resumed in 2022.

Duck populations have fluctuated substantially over time. The drought of the 1980s pushed many populations to near record low levels. The resiliency of these birds, however, was dramatically illustrated when most populations rebounded after water returned to the prairies in the 1990s. Pintails and scaup were exceptions to this rule; pintails because contemporary agricultural practices limit their nest success in prairie Canada and scaup for reasons apparently related to nutritional deficiencies on migration habitats. Duck populations will continue to fluctuate in the future as the numbers of wetlands on the landscape in north-central North America rise and fall with changes in the weather.

## Iowa's Canada Goose Population

Temperate breeding Canada geese nested throughout Iowa prior to European settlement, but were extirpated from most of the Midwest, including Iowa, by 1900. The Canada goose restoration program initiated by the Iowa Conservation Commission in 1964, the forerunner to the Iowa Department of Natural Resources (DNR), has successfully restored this species to most of its former nesting range in Iowa (see Giant Canada Goose Restoration). Iowa's Canada goose population exhibited steady growth during 1965-2010, declined during 2011-2013, but has recovered since (Figure 4.2). Each summer, DNR staff estimate the numbers of adult Canada geese and goslings in their wildlife units. To obtain a statistically valid estimate of this population, an aerial survey is also conducted each spring. The results of an aerial survey conducted during April 2022 indicated the population was 74,457 (95% CI = 60,635, 88,279).

## Waterfowl Harvests

Waterfowl harvests and hunter activity in Iowa are estimated annually by the USFWS (Table 4.2). Harvest estimates are calculated by combining the results of 2 surveys: 1) a survey of randomly selected hunters from the Harvest Information Program (HIP), which is used to calculate the total number of waterfowl killed, and 2) a survey that solicits duck wings and goose tails, which is used to estimate the species composition of the harvest.

Iowa's duck harvests have fluctuated substantially since 1961. The lowest harvests of all ducks and mallards occurred in the early 1960s, years with low duck populations and restrictive hunting regulations. The highest duck harvest was in 1979, a year with good duck numbers and, perhaps more importantly, excellent habitat conditions in Iowa due to above normal rainfall in August and September. Duck harvests began to decline in 1985, bottoming out in 1988 and 1989. Reasons for reduced harvests included smaller breeding populations and fall flights, shorter seasons, reduced bag limits, fewer hunters, and poor local habitat conditions. Duck harvests have increased in recent years as a result of improvements in duck numbers, liberal hunting regulations, and increases in numbers of active hunters.

The addition of an experimental Special September Teal season in 2014-2023 allowed Iowan's additional opportunity to hunt teal. Blue-winged teal harvest increased during 2014 and 2015. However, total duck harvest has declined since the implementation of the teal season, particularly for wood ducks and mallards.

Iowa's Canada goose harvest was relatively constant during 1967-85, but began to increase in 1986 as a result of increasing numbers of local giant Canada geese (Table 4.2). Canada goose harvests increased substantially after 1988, but were dampened in 1993 when restrictive Canada goose hunting regulations were implemented to reduce the harvest of Eastern Prairie Population (EPP) Canada geese. EPP geese nest on the west coast of Hudson Bay and are one of the two principle migrant Canada goose populations that fly through Iowa (the other consists of small Canada geese, commonly called "cacklers" or "hutchies," that nest on Baffin Island in the Arctic). The floods of 1993 may have also contributed to the decrease in the Canada goose harvest that year. Canada goose harvests resumed their increasing trend in the mid 1990s, and peaked at 78,600 in 2005. The apparent drop in harvest in 1998 and 1999 may be an artifact of how the estimates were calculated rather than an actual change in harvest. At that time, the USFWS was converting from the old waterfowl stamp survey methodology to the new Harvest Information Program (HIP) survey. Harvest numbers from 1999 to the present are HIP estimates. Canada goose harvest during 2015-2019 is the first period where Iowa's estimated Canada goose harvest was higher than the estimated mallard harvest.

The snow goose harvest in Iowa has declined since the early 1970s, despite record high numbers of snow geese in the Flyway in the 1990s and 2000s. Declining harvests resulted from shifting snow goose migration patterns, later migrations, increased use of refuges, and large numbers of older geese in the population. By the mid 1990s, the mid-continent light goose population was severely damaging Arctic breeding habitats. To increase harvests of light geese, more liberal hunting regulations were implemented (liberal bag limits, 107-day seasons) and a conservation order was implemented in 1999 to permit taking light geese after March 10 and to allow for hunting beyond the 107-day limit imposed by the Migratory Bird Treaty with Canada and Mexico. The harvest during the conservation order period in Iowa has ranged from 8,200 to 56,830 during 1999-2020. During the 1998-2020 regular light goose seasons, the harvest ranged from 0 to 15,000.

### **Waterfowl Seasons**

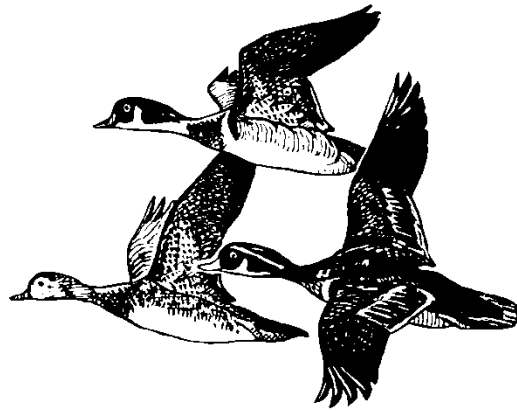
Iowa waterfowl hunters have experienced a wide range of duck and goose seasons since the USFWS began regulating waterfowl hunting in 1918 (Table 4.3 and Table 4.4). Nearly every conceivable season-date combination has been tried in the past 90 years. Duck hunting regulations are inherently complex because they involve many species. The general lack of consistency in regulations, however, has made interpretation of the effects of these regulations on duck harvests very difficult. Goose hunting regulations, on the other hand, have been less complex and more consistent. The relative secure goose breeding habitat, along with consistently conservative seasons and bag limits, have enabled goose populations to prosper. The growth of temperate-breeding Canada goose population, however, has complicated traditional Canada goose harvest management. It is particularly challenging to develop hunting regulations that will increase harvests of local Canada geese while limiting harvests of migrant geese from Arctic and sub-Arctic regions.

### **Waterfowl Banding**

Ducks and geese are captured and marked with leg bands to obtain information on survival rates, hunting mortality, migration patterns and timing, and the relationships of harvest areas to production areas. Banding is conducted at the request of the USFWS and the Mississippi Flyway Council (MFC). Both state and federal personnel band ducks in Iowa, but DNR personnel band all the Canada geese and more than 95% of the wood ducks (Table 4.5). Nearly 300,000 ducks and geese have been banded by DNR personnel since 1964.

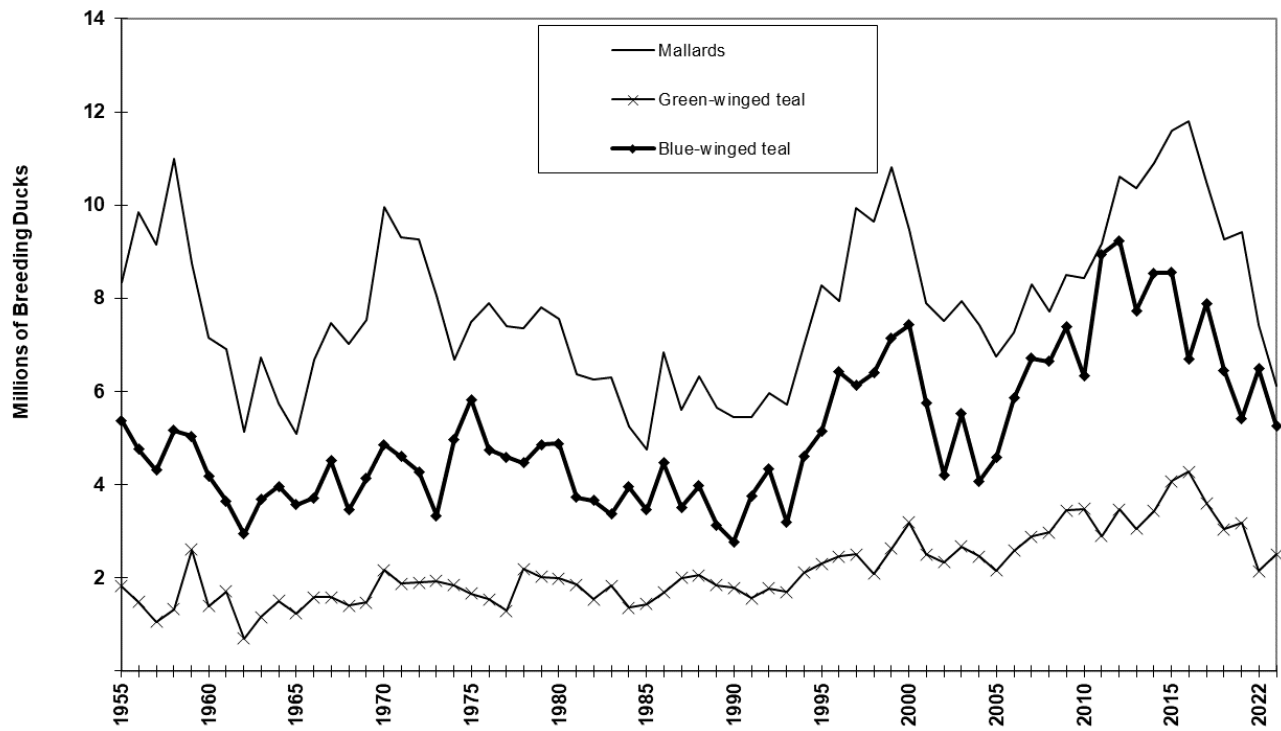
The USFWS, in concert with the MFC, determines banding priorities. In the 1960s emphasis was placed on banding blue-winged teal to evaluate special teal seasons. Winter mallard banding was conducted in the 1970s to supplement breeding grounds bandings and examine hen mortality during spring and summer. Wood duck bandings were used to evaluate Iowa's September duck seasons. Wood duck bandings are also important to measure the effects of hunting on wood duck populations, an aspect that has been particularly important since 2008 when the wood duck bag limit was increased from 2 to 3 birds per day.

Canada goose banding has increased with the growth of the local Canada goose population in Iowa. Migrant Canada geese have also been banded as part of cooperative projects with the MFC. Canada goose banding will be increasingly important as the Mississippi Flyway, USFWS and state conservation agencies attempt to balance harvest of abundant temperate breeding Canada goose populations and migrant Canada goose populations, which have been stable or decreasing.



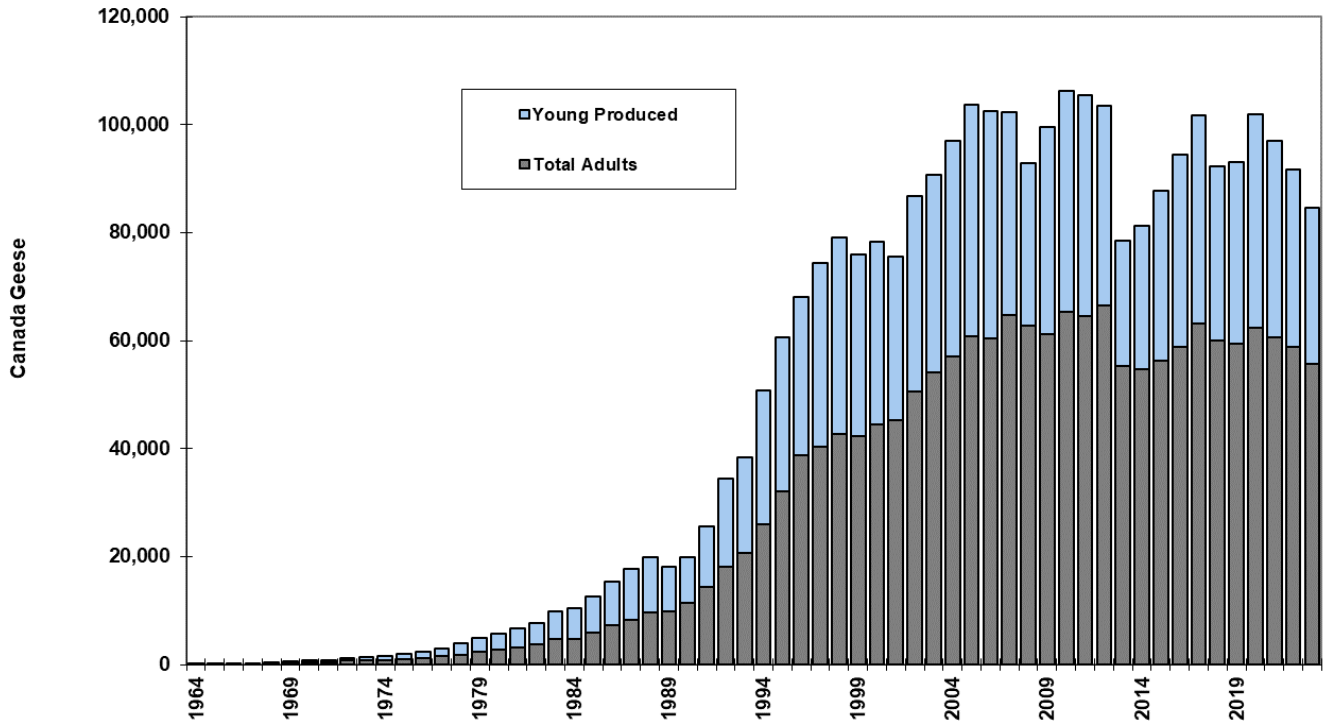
Figures

Figure 4.1 Breeding populations of ducks important to Iowa.



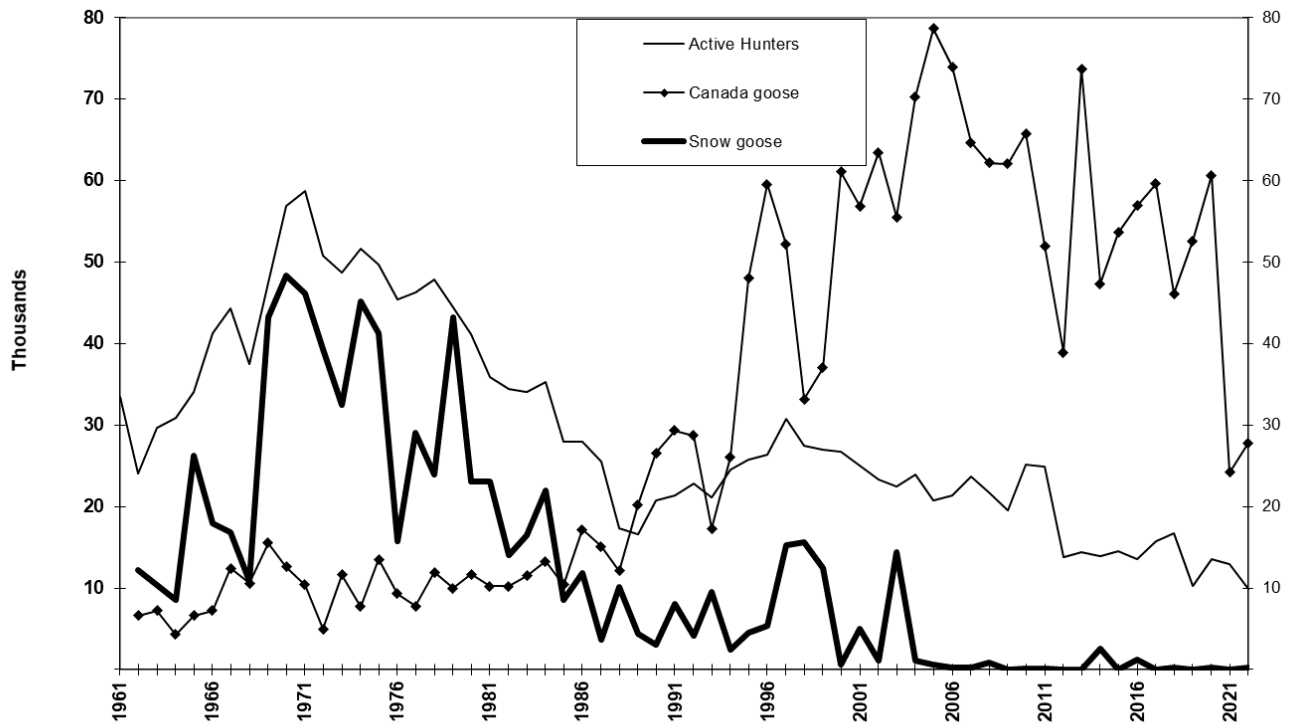
Source: USFWS

Figure 4.2 Iowa's Canada goose population.



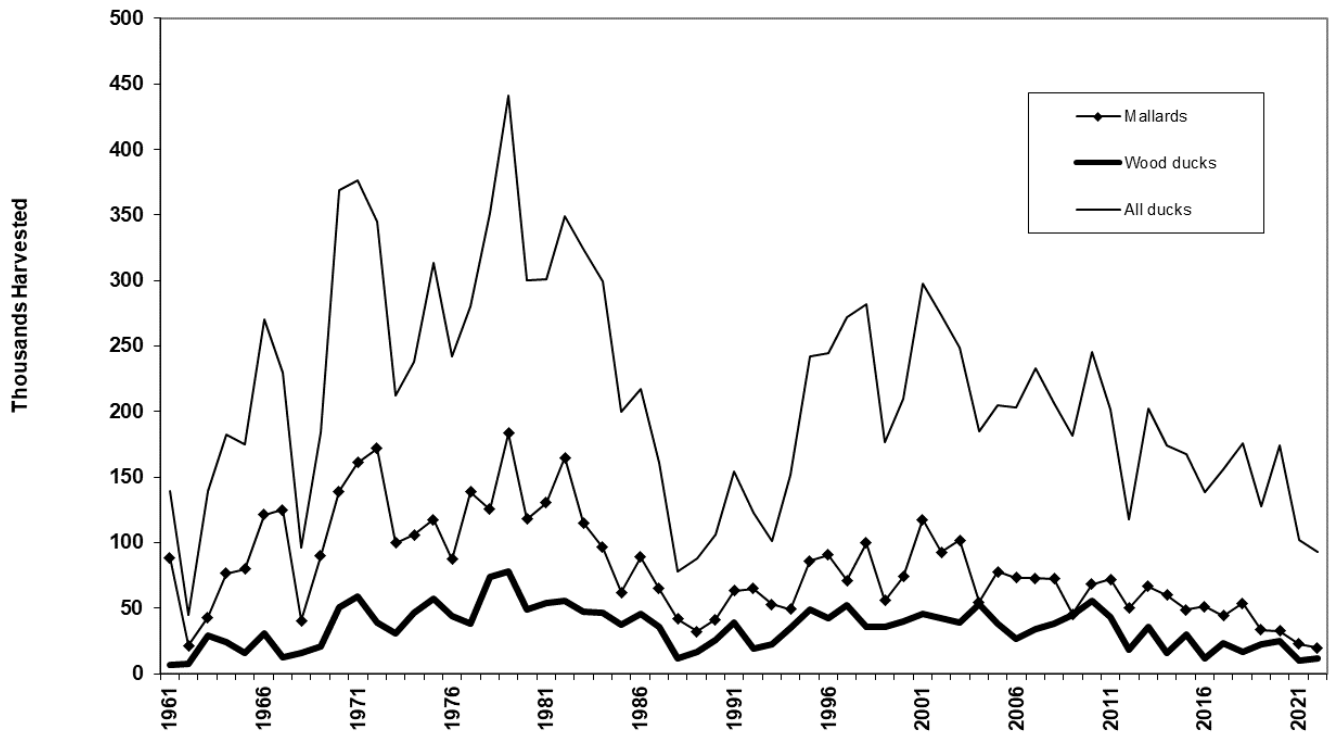
Source: Iowa DNR

Figure 4.3 Goose harvests in Iowa.



Source: USFWS

Figure 4.4 Duck harvests in Iowa.



Source: USFWS

Tables

Table 4.1 Breeding population estimates for 10 species of ducks (in thousands) in the traditional survey region in North America. (Source: USFWS)

Year	Mallard	Gadwall	American Wigeon	Green Winged Teal	Blue Winged Teal	Northern Shoveler	Northern Pintail	Red-Head	Canvas Back	Scaup
1955	8,356	663	3,067	1,823	5,381	1,571	9,387	572	599	5,609
1956	9,842	783	3,118	1,480	4,763	1,630	9,897	755	696	5,734
1957	9,151	691	2,852	1,053	4,312	1,459	6,311	542	615	5,745
1958	10,994	454	2,421	1,326	5,165	1,187	5,552	443	742	5,286
1959	8,746	527	3,703	2,601	5,046	1,456	5,483	493	481	6,961
1960	7,164	721	2,937	1,390	4,185	1,743	5,414	495	600	4,826
1961	6,912	594	2,817	1,709	3,655	1,256	3,676	319	428	5,335
1962	5,139	846	1,882	700	2,940	1,183	3,395	503	354	5,240
1963	6,723	1,092	1,706	1,155	3,681	1,278	3,622	413	499	5,396
1964	5,740	825	2,495	1,505	3,961	1,608	3,013	527	649	5,058
1965	5,101	1,270	2,312	1,237	3,570	1,372	3,549	599	520	4,652
1966	6,680	1,672	2,282	1,580	3,718	2,103	4,764	713	658	4,432
1967	7,470	1,385	2,320	1,588	4,509	2,291	5,270	734	500	4,932
1968	7,019	1,947	2,282	1,405	3,459	1,646	3,470	493	561	4,360
1969	7,536	1,573	2,919	1,468	4,133	2,145	5,900	633	501	5,131
1970	9,960	1,606	3,447	2,171	4,858	2,220	6,369	624	578	5,634
1971	9,306	1,603	3,281	1,881	4,607	2,005	5,874	534	444	5,063
1972	9,255	1,621	3,172	1,895	4,277	2,441	7,018	551	426	7,932

Year	Mallard	Gadwall	American Wigeon	Green Winged Teal	Blue Winged Teal	Northern Shoveler	Northern Pintail	Red-Head	Canvas Back	Scaup
1973	8,060	1,247	2,864	1,936	3,334	1,624	4,351	498	617	6,222
1974	6,681	1,592	2,665	1,840	4,968	2,006	6,583	627	504	5,720
1975	7,494	1,641	2,692	1,667	5,829	1,962	5,878	829	591	6,427
1976	7,894	1,245	2,476	1,536	4,747	1,756	5,475	668	610	5,779
1977	7,396	1,312	2,560	1,291	4,589	1,475	3,935	637	667	6,247
1978	7,353	1,561	3,286	2,194	4,471	1,978	5,106	738	369	5,936
1979	7,816	1,751	3,087	2,019	4,861	2,386	5,382	695	573	7,540
1980	7,570	1,391	3,558	1,994	4,884	1,902	4,514	753	727	6,314
1981	6,367	1,402	2,924	1,851	3,726	2,325	3,472	596	610	5,918
1982	6,254	1,637	2,440	1,543	3,657	2,141	3,709	617	510	5,468
1983	6,313	1,517	2,606	1,836	3,366	1,870	3,506	709	523	7,136
1984	5,247	1,532	2,987	1,361	3,956	1,620	2,969	673	520	6,909
1985	4,754	1,304	2,040	1,435	3,459	1,697	2,511	579	373	5,038
1986	6,836	1,540	1,732	1,682	4,463	2,118	2,737	560	437	5,204
1987	5,613	1,311	1,982	2,003	3,518	1,951	2,629	502	451	4,837
1988	6,331	1,349	2,194	2,058	3,975	1,680	2,011	441	436	4,684
1989	5,650	1,416	1,974	1,843	3,128	1,540	2,113	511	478	4,344
1990	5,452	1,672	1,860	1,790	2,776	1,759	2,257	481	539	4,294
1991	5,444	1,584	2,254	1,558	3,764	1,716	1,803	446	491	5,255
1992	5,976	2,033	2,208	1,773	4,333	1,954	2,098	596	482	4,639
1993	5,708	1,755	2,053	1,695	3,193	2,047	2,053	485	472	4,080
1994	6,980	2,318	2,382	2,108	4,616	2,912	2,972	654	526	4,529
1995	8,269	2,836	2,615	2,301	5,140	2,855	2,758	889	771	4,446
1996	7,941	2,984	2,273	2,459	6,416	3,449	2,736	834	849	4,250
1997	9,940	3,897	3,118	2,507	6,124	4,120	3,558	918	689	4,112
1998	9,640	3,742	2,858	2,087	6,399	3,183	2,521	1,005	686	3,472
1999	10,806	3,236	2,920	2,631	7,150	3,890	3,058	973	716	4,412
2000	9,470	3,158	2,733	3,194	7,431	3,521	2,908	926	707	4,026
2001	7,904	2,679	2,494	2,509	5,757	3,314	3,296	712	580	3,694
2002	7,504	2,235	2,334	2,334	4,207	2,138	1,790	565	487	3,524
2003	7,950	2,549	2,551	2,679	5,518	3,620	2,558	637	558	3,734
2004	7,425	2,590	1,981	2,461	4,073	2,810	2,185	605	617	3,807
2005	6,755	2,179	2,225	2,157	4,586	3,592	2,561	592	521	3,387
2006	7,277	2,825	2,171	2,587	5,860	3,680	3,386	916	691	3,247
2007	8,307	3,356	2,807	2,890	6,708	4,553	3,335	1,009	865	3,452
2008	7,724	2,728	2,487	2,980	6,640	3,508	2,613	1,056	489	3,738
2009	8,512	3,054	2,469	3,444	7,384	4,376	3,225	1,044	662	4,172
2010	8,430	2,977	2,425	3,476	6,329	4,057	3,509	1,064	585	4,244
2011	9,183	3,257	2,084	2,900	8,949	4,641	4,429	1,356	692	4,319
2012	10,602	3,586	2,145	3,471	9,242	5,018	3,473	1,270	760	5,239
2013	10,372	3,351	2,644	3,053	7,732	4,751	3,335	1,202	787	4,166
2014	10,900	3,811	3,117	3,440	8,542	5,279	3,220	1,279	685	4,611
2015	11,600	3,834	3,037	4,080	8,547	4,391	3,043	1,195	757	4,395

Year	Mallard	Gadwall	American Wigeon	Green Winged Teal	Blue Winged Teal	Northern Shoveler	Northern Pintail	Red-Head	Canvas Back	Scaup
2016	11,793	3,712	3,411	4,275	6,689	3,967	2,618	1,289	736	4,992
2017	10,488	4,180	2,777	3,605	7,888	4,353	2,889	1,115	732	4,371
2018	9,255	2,886	2,820	3,043	6,450	4,208	2,365	999	686	3,989
2019	9,423	3,258	2,832	3,178	5,427	3,649	2,268	732	652	3,590
2020	Survey not conducted.									
2021	Survey not conducted.									
2022	7,434	2,685	2,187	2,150	6,491	3,036	1,784	1,066	587	3,655
2023	6,126	2,562	1,889	2,504	5,253	2,859	2,219	931	619	3,519
Percent Change in 2023 from:										
2022	-18%	-5%	-14%	16%	-19%	-6%	24%	-13%	5%	-4%
1955-2022	-5%	28%	-16%	-1%	27%	14%	-53%	45%	0%	-26%
1955-2022 Statistics										
Average	7,841	2,062	2,586	2,170	5,116	2,624	3,786	738	590	4,902
Maximum	11,793	4,180	3,703	4,275	9,242	5,279	9,897	1,356	865	7,932
Minimum	4,754	454	1,706	700	2,776	1,183	1,784	319	354	3,247

**Table 4.2 Selected waterfowl harvest and hunter activity estimates for Iowa. (Source USFWS)**

Data for 2001 to the present is based on the Harvest Information Program and is preliminary.

Year	Days & Harvest (1,000s)								Federal Duck Stamp	Avg Seasonal Duck Bag	Active Adult Hunters
	Mallard	Wood Duck	B-W Teal	G-W Teal	All Ducks	Canada Geese	Snow Geese	Days Hunted			
1961	88.5	6.8	0.5	16.3	139.4			230.4	41,147	3.9	33,500
1962	21.3	7.8	0.4	5.6	45.1	6.6	12.2	162.0	30,602	2.1	24,000
1963	43.0	29.0	27.9	14.9	139.2	7.2	10.4	228.2	37,166	4.7	29,700
1964	76.6	24.5	17.9	26.8	182.1	4.3	8.5	236.9	37,668	6.2	30,900
1965	79.8	15.4	43.8	22.3	174.6	6.6	26.3	271.6	39,941	6.0	34,000
1966	121.3	30.8	47.3	40.7	270.2	7.2	17.9	361.2	47,438	7.4	41,300
1967	124.9	12.4	43.3	38.4	229.4	12.4	16.8	394.6	52,269	6.6	44,300
1968	40.4	16.1	0.9	19.7	96.3	10.6	10.8	270.0	45,753	2.6	37,500
1969	89.9	21.1	53.3	22.3	183.7	15.5	43.2	397.3	54,807	5.1	47,500
1970	139.2	50.6	51.6	45.2	368.7	12.6	48.3	496.6	65,822	6.0	56,900
1971	160.9	59.3	49.6	26.6	376.2	10.4	46.1	536.5	68,401	6.3	58,700
1972	171.8	39.3	31.2	23.9	344.5	5.0	39.3	513.8	57,907	6.4	50,800
1973	99.9	31.0	18.5	18.1	211.9	11.6	32.5	401.1	57,196	3.9	48,700
1974	106.1	46.7	26.0	24.0	238.0	7.7	45.1	450.6	60,446	4.3	51,600
1975	117.4	57.5	51.0	38.6	313.6	13.5	41.2	446.1	58,791	5.9	49,700
1976	87.5	44.0	33.0	27.5	242.2	9.3	15.8	359.6	55,449	5.0	45,400
1977	138.7	37.9	17.0	38.7	280.0	7.8	29.1	407.3	57,143	5.3	46,200
1978	125.6	73.6	41.1	41.7	351.4	11.9	23.9	424.9	56,259	6.7	47,800
1979	183.3	77.8	69.2	38.0	441.0	10.0	43.2	496.7	49,845	9.5	44,400
1980	118.1	49.1	39.0	37.3	299.9	11.7	23.1	384.6	47,008	6.6	41,100
1981	130.2	54.3	34.6	27.7	301.1	10.2	23.1	371.5	41,648	7.9	35,900
1982	164.9	55.3	58.2	24.3	348.8	10.2	14.0	354.9	40,599	9.6	34,400

Year	Days & Harvest (1,000s)								Federal Duck Stamp	Avg Seasonal Duck Bag	Active Adult Hunters
	Mallard	Wood Duck	B-W Teal	G-W Teal	All Ducks	Canada Geese	Snow Geese	Days Hunted			
1983	115.2	47.3	74.0	27.8	324.2	11.5	16.5	310.4	40,381	8.5	34,000
1984	96.3	46.3	56.8	36.2	299.5	13.3	22.0	300.3	41,078	7.5	35,300
1985	62.0	37.4	41.5	22.6	199.8	10.4	8.5	241.4	33,304	6.8	27,900
1986	88.9	46.0	26.9	18.3	217.0	17.2	11.8	244.0	33,504	7.3	27,900
1987	64.8	36.1	14.2	20.1	161.1	15.1	3.6	207.0	30,248	6.0	25,500
1988	41.6	11.4	1.4	12.5	78.3	12.1	10.1	131.8	22,008	4.3	17,300
1989	32.2	17.0	2.9	17.9	87.8	20.2	4.4	127.5	21,686	4.7	16,600
1990	41.3	25.6	4.6	17.8	105.8	26.6	3.1	159.3	24,686	4.9	20,800
1991	63.1	39.4	6.6	13.3	154.2	29.3	8.1	196.7	24,989	6.8	21,400
1992	64.9	18.8	2.9	14.3	122.8	28.7	4.1	198.6	26,744	5.1	22,800
1993	52.7	22.2	4.1	7.9	100.9	17.3	9.5	176.5	25,640	4.7	21,092
1994	49.1	34.9	17.5	22.5	151.8	26.1	2.4	232.6	29,206	6.0	24,523
1995	86.1	49.2	38.9	23.7	242.3	48.0	4.6	280.2	30,282	8.2	25,792
1996	90.6	42.5	36.2	31.0	244.7	59.5	5.4	284.2	30,945	7.9	26,338
1997	71.2	52.1	54.5	32.7	272.0	52.2	15.2	338.3	36,062	8.3	30,737
1998	99.6	36.0	47.7	41.9	281.9	33.2	15.6	292.8	30,864	9.9	27,454
1999	55.9	35.8	41.9	17.4	176.7	33.0	12.5	271.9	32,419	7.2	27,024
2000	74.2	39.9	25.3	25.4	209.6	61.0	0.6	288.4	30,951	8.2	26,693
2001	117.2	45.5	49.3	29.7	296.4	58.1	5.2	203.5	32,090	11.9	25,000
2002	97.2	44.5	50.6	43.0	287.2	67.1	1.1	185.7	30,806	12.3	23,300
2003	101.7	38.6	30.1	29.4	248.9	55.5	14.4	187.1	30,206	11.0	22,500
2004	54.7	52.9	28.5	16.8	184.5	70.3	1.0	203.0	28,649	9.0	23,900
2005	77.9	38.1	39.0	21.2	205.2	78.6	0.6	128.9	26,943	11.8	20,800
2006	73.2	26.7	27.8	31.9	203.3	73.9	0.2	129.9	29,380	11.3	21,300
2007	72.7	34.2	40.3	39.5	232.8	64.6	0.3	151.4	26,531	11.4	23,700
2008	72.3	38.3	15.0	31.3	206.1	62.2	0.8	135.8	26,354	10.9	21,700
2009	45.3	45.1	35.5	22.5	181.5	62.0	0.0	130.3	NA	10.3	19,500
2010	68.3	55.5	46.8	20.3	245.5	65.8	0.2	149.1	NA	11.1	25,200
2011	72.0	43.3	23.4	19.7	201.8	52.0	0.1	136.2	NA	10.8	24,900
2012	50.0	18.2	14.8	13.0	117.7	38.9	0.0	69.7	NA	9.4	13,800
2013	66.6	35.9	42.7	19.3	202.3	73.7	0.0	128.5	NA	14.1	14,400
2014	60.0	16.1	56.6	17.5	174.1	47.3	1.6	96.6	NA	12.5	13,900
2015	48.8	29.9	47.1	16.1	167.8	53.6	0.0	119.8	NA	11.5	14,555
2016	51.3	11.6	18.3	23.2	138.6	56.9	1.2	105.4	NA	10.3	13,500
2017	44.3	23.6	37.4	21.0	156.0	59.6	0.0	99.2	NA	11.6	15,700
2018	53.9	16.9	47.6	18.0	176.1	46.1	0.2	97.8	NA	10.9	16,700
2019	33.5	22.8	26.7	13.1	127.6	52.6	0.0	77.0	NA	12.4	10,300
2020	32.4	24.9	45.6	27.9	174.0	60.6	0.3	114.9	NA	15.2	13,600
2021	22.5	9.7	23.6	24.0	101.7	24.2	0.0	79.6	NA	9.9	12,900
2022	19.8	11.6	20.9	20.5	92.5	27.8	0.2	50.0	NA	9.3	9,900

Percent Change in 2022 From:

2021	-12%	20%	-11%	-15%	-9%	15%		-37%		-6%	-23%
------	------	-----	------	------	-----	-----	--	------	--	-----	------



Year	Days & Harvest (1,000s)								Federal Duck Stamp	Avg Seasonal Duck Bag	Active Adult Hunters
	Mallard	Wood Duck	B-W Teal	G-W Teal	All Ducks	Canada Geese	Snow Geese	Days Hunted			
1961-2021 Average	-76%	-67%	-36%	-18%	-57%	-14%	-98%	-80%		16%	-66%
1961-18 Statistics											
Average	81.8	36.1	32.8	25.1	217.6	31.6	13.3	257.5	39,196.8	7.8	30,134.6
Maximum	183.3	77.8	74.0	45.2	441.0	78.6	48.3	536.5	68,401.0	14.1	58,700.0
Minimum	21.3	6.8	0.4	5.6	45.1	4.3	0.0	69.7	21,686.0	2.1	13,500.0
10-yr avg											
1961-70	82.5	21.5	28.7	25.2	182.9	9.2	21.6	304.9	45,261	5.0	37,960
1971-80	130.9	51.6	37.6	31.4	309.9	9.9	33.9	442.1	56,845	6.0	48,440
1981-90	83.7	37.7	31.5	22.5	212.3	14.7	11.7	244.8	32,914	6.8	27,560
1991-00	70.7	37.1	27.6	23.0	195.7	39.2	7.8	256.0	29,973	7.2	25,385
2001-10	77.6	41.7	36.1	28.4	227.9	65.3	2.4	160.5	28,939.6	11.1	22,690
2011-20	51.3	24.3	36.0	18.9	163.6	54.1	0.4	104.5	NA	11.9	15,316

**Table 4.3 Duck and coot seasons in Iowa.**

Year	Season Length	Season Dates	Shooting Hours	Limits		Additional Bag Limit Information
				Duck Bag/Poss	Coot Bag/Poss	
		Statewide				
1917	227	Sep 1-Apr 15	Unknown	?	?	
1918	107	Sep 16-Dec 31	SR-SS	25/none	25/none	
1919	107	Sep 16-Dec 31	SR-SS	25/none	25/none	
1920	107	Sep 16-Dec 31	SR-SS	25/none	25/none	
1921	107	Sep 16-Dec 31	SR-SS	25/none	25/none	
1922	107	Sep 16-Dec 31	SR-SS	25/none	25/none	
1923	107	Sep 16-Dec 31	SR-SS	25/none	25/none	
1924	107	Sep 16-Dec 31	½ SR-SS	15/50 WF	25/none	WF = all waterfowl combined
1925	107	Sep 16-Dec 31	½ SR-SS	15/50 WF	25/none	
1926	107	Sep 16-Dec 31	½ SR-SS	15/50 WF	25/none	
1927	107	Sep 16-Dec 31	½ SR-SS	15/50 WF	25/none	
1928	107	Sep 16-Dec 31	½ SR-SS	15/50 WF	25/none	
1929	107	Sep 16-Dec 31	½ SR-SS	15/21 DC	25/none	DC = all ducks combined
1930	107	Sep 16-Dec 31	½ SR-SS	15/21 DC	25/none	
1931	30	Oct 20-Nov 19	½ SR-SS	15/21 DC	25/none	
1932	61	Oct 1-Nov 30	½ SR-SS	15/21 <sup>*a</sup>	25/none	<sup>*a</sup> Closed season on Wd, Ru, & Bu.
1933	61	Oct 1-Nov 30	½ SR-SS	12/24 <sup>*a</sup>	25/none	
1934	30	Oct 10-Nov 18	SR-SS	12/24 <sup>*a</sup>	25/none	Live decoys limited to 25. Season included 10 rest days.
1935	30	Oct 21-Nov 19	7am-4pm	10/10 <sup>*a</sup>	15/15	Use of live decoys prohibited.
1936	30	Nov 1-Nov 30	7am-4pm	10/10 <sup>*b</sup>	15/15	<sup>*b</sup> Closed sea. on Wd, Cb, Rh, Ru, & Bu.
1937	30	Oct 9-Nov 7	7am-4pm	10/10 <sup>*b</sup>	25/25	
1938	45	Oct 15-Nov 28	7am-4pm	10/20 <sup>*c</sup>	25/25	<sup>*c</sup> Only 1 Bu, 1 Cb, 1 Ru, and 1 Rh, & no more than 3 in aggregate
1939	45	Oct 22-Dec 5	7am-4pm	10/20 <sup>*c</sup>	25/25	
1940	60	Oct 16-Dec 14	SR-4pm	10/20 <sup>*c</sup>	25/25	
1941	60	Oct 16-Dec 14	SR-4pm	10/20 <sup>*d</sup>	25/25	<sup>*d</sup> Only 3 Rh or 3 Bu or 3 in aggregate & only 1 Wd in poss at any time.
1942	70	Oct 15-Dec 23	SR-SS	10/20 <sup>*d</sup>	25/25	

Year	Season Length	Season Dates	Shooting Hours	Limits		Additional Bag Limit Information
				Duck Bag/Poss	Coot Bag/Poss	
1943	70	Sep 25-Dec 3	½ SR-SS	10/20* <sup>d</sup>	25/25	
1944	80	Sep 20-Dec 8	½ SR-SS	10/20* <sup>e</sup>	25/25	* <sup>e</sup> Only 5 each or in comb.: Ma, Pt, or Wg & only 1 Wd. 25 Am or Rm or comb.
1945	80	Sep 20-Dec 8	½ SR-SS	10/20* <sup>f</sup>	25/25	* <sup>f</sup> Only 1 Wd in poss. at any time 25 Cm or Rm or comb.
1946	45	Oct 26-Dec 9	½ SR-½ SS	7/14* <sup>f</sup>	25/25	
1947	30	Oct 21-Nov 19	½ SR-1 SS	4/8* <sup>f</sup>	15/15	
1948	30	Oct 29-Nov 27	½ SR-1 SS	4/8* <sup>f</sup>	15/15	
1949	40	Oct 21-Nov 29	½ SR-1 SS	4/8* <sup>f</sup>	15/15	
1950	35	Oct 20-Nov 23	½ SR-1 SS	4/8* <sup>f</sup>	15/15	
1951	45	Oct 12-Nov 25	½ SR-1 SS	4/8* <sup>f</sup>	10/10	
1952	55	Oct 8-Dec 1	½ SR-1 SS	4/8* <sup>g</sup>	10/10	* <sup>g</sup> Only 1 Wd in poss. at any time. 1 Hm or 25 Cm or Rm or comb.
1953	55	Oct 8-Dec 1	½ SR-SS	4/8* <sup>g</sup>	10/10	
1954	55	Oct 15-Dec 8	½ SR-1 SS	4/8* <sup>h</sup>	10/10	* <sup>h</sup> Closed sea. on Wd.; 1 Hm or 25 Cm or Rm or comb.
1955	70	Oct 8-Dec 16	½ SR-½ SS	4/8* <sup>g</sup>	10/10	
1956	70	Oct 6-Dec 14	½ SR-½ SS	4/8* <sup>h</sup>	10/10	
1957	70	Oct 5-Dec 13	½ SR-SS	4/8* <sup>i</sup>	10/10	* <sup>i</sup> Closed season on Wd.; 5 mergansers, only 1 Hm.
1958	70	Oct 4-Dec 12	½ SR-SS	4/8* <sup>ii</sup>	10/10	* <sup>ii</sup> Only 2 Cb or 2 Rh or 2 in comb.; No Wd season. 5 merg. only 1 Hm.
1959	50	Oct 20-Dec 8	SR-SS	3/6* <sup>j</sup>	3/6	* <sup>j</sup> Only 1 Wd, 1 Cb, 1 Rh, or 1 Ru.; 5 mergansers, only 1 Hm.
1960	50	Oct 15-Dec 3	½ SR-SS	3/6* <sup>k</sup>	8/12	* <sup>k</sup> Only 1 Wd. Closed sea. on Cb & Rh.; 5 mergansers, only 1 Hm.
1961	30	Oct 21-Nov 19	SR-SS	2/4* <sup>k</sup>	6/6	
1962	25	Oct 27-Nov 20	SR-SS	2/4* <sup>l</sup>	6/6	* <sup>l</sup> Only 1 Ma or Bd, 2 Wd. No Cb or Rh.; 2 bonus Sc., 5 merg., only 1 Hm.
1963	35	Oct 5-13 Oct 26-Nov 20	SR-SS	4/8* <sup>m</sup>	8/8	* <sup>m</sup> Only 2 Ma or Bd, 2 Wd. No Cb or Rh.; 5 mergansers, only 1 Hm.
1964	35	Oct 3-4 Oct 24-Nov 25	SR-SS	4/8* <sup>n</sup>	10/20	* <sup>n</sup> Only 2 Ma or Bd, 2 Wd, 2 Cb or 2 Rh.; 5 mergansers, only 1 Hm.
1965	40	Sep 11-19 (teal season) Oct 23-Dec 1	SR-SS ½ SR-SS	4/8* <sup>o</sup>	10/20	* <sup>o</sup> Only 1 Ma or Pt or Bd, 2 Wd, 2 Cb or Rh.; 5 mergansers, only 1 Hm.
1966	45	Sep 17-25 (teal season) Oct 15-Nov 28	SR-SS ½ SR-SS	4/8* <sup>oo</sup>	10/20	* <sup>oo</sup> Only 2 Ma or Bd, 2 Wd, 2 Cb.; 5 mergansers, only 1 Hm.
1967	40	Sep 16-24 (teal season) Oct 21-Nov 29	SR-SS ½ SR-SS	4/8* <sup>p</sup>	10/20	* <sup>p</sup> Only 2 Ma or Bd, 1 Wd, & 1 Cb.; 5 mergansers, only 1 Hm.

Year	Season Length	Season Dates	Shooting Hours	Limits		Additional Bag Limit Information	
				Duck Bag/Poss	Coot Bag/Poss		
1968	30	Oct 26-Nov 24	½ SR-SS	3/6* <sup>q</sup>	10/20	* <sup>q</sup> Only 1 Ma, 2 Bd, 2 Wd, 1 Cb or Rh.; 5 mergansers, only 1 Hm.	
1969	30	Sep 13-21 (teal season) Oct 25-Nov 23	SR-SS ½ SR-SS	4/8* <sup>r</sup>	10/20	* <sup>r</sup> Only 2 Ma, 2 Bd, 2 Wd, 1 Cb or Rh.; 5 mergansers, only 1 Hm.	
1970	55	Oct 3-Nov 26	SR-SS	PS* <sup>s</sup>	15/30	* <sup>s</sup> 90 pt = Hn Ma, Bd, Wd, Rh, Cb, Hm.; 20 pt= Dr Ma, Hn Pt, Rn. 10 pt= all other.	
1971	50	Oct 2-Nov 20	½ SR-SS	PS* <sup>t</sup>	15/30	* <sup>t</sup> 100 pt= Cb, Rh. 90 pt= Hn Ma, Bd, Wd, Hm.; 20 pt= Dr Ma, Hn Pt, Rn. 10 pt= all other.	
1972	50	Oct 7-12 Oct 21-Dec 3	SR-SS	PS* <sup>u</sup>	15/30	* <sup>u</sup> 90 pt= Hn Ma, Bd, Wd, Hm. 20 pt= Dr Ma, Hn Pt, Rn. 10 pt= all other.; Closed season on Cb & Rh.	
First year state duck stamp required							
1973	45	Oct 6-10 Oct 20-Nov 28	SR-SS	PS* <sup>v</sup>	15/30	* <sup>v</sup> 100 pt= Cb, Rh. 90 pt= Hn Ma, Wd, Hm.; 25 pt= Dr Ma, Pt, Bd, Rn & all others.; 15 pt= Bt, Gt, Ga, Wg, Sh, Sc, Cm, Rm.	
1974	45	Oct 5-12 Oct 26-Dec 1	SR-SS	PS* <sup>w</sup>	15/30	* <sup>w</sup> 100 pt= Cb, Rh. 90 pt= Hn Ma, Bd, Wd, Hm.; 35 pt= Dr Ma, Rn, Md. 15 pt= all others.	
1975	45	Oct 4-11 Oct 25-Nov 30	½ SR-SS	PS* <sup>x</sup>	15/30	* <sup>x</sup> 100 pt= Cb, Rh. 90 pt= Hn Ma, Bd, Wd, Hm.; 35 pt= Dr Ma, Rn, Wg, & all others.; 10 pt= Bwt, Gwt, Ga, Pt, Sh, Sc.	
1976	50	Oct 2-7 Oct 23-Dec 5	½ SR-SS	PS* <sup>y</sup>	15/30	* <sup>y</sup> 100 pt= Cb. 70 pt= Hn Ma, Bd, Wd, Rh, Hm.; 25 pt= Dr Ma, Rn, Wg, & all others.; 10 pt= Bt, Gt, Ct, Ga, Pt, Sh, Sc, Cm, Rm.	
1977	45	Oct 8-15 Oct 22-Nov 27	SR-SS	PS* <sup>y</sup>	15/30		
1978	50	Oct 1-8 Oct 21-Dec 1	½ SR-SS	PS* <sup>z</sup>	15/30	* <sup>z</sup> 100 pt= Cb. 70 pt= Hn Ma, Bd, Wd, Rh, Hm.; 35 pt= Dr Ma, Rn, & all others.; 10 pt= Bt, Gt, Ct, Ga, Wg, Pt, Sh, Sc, Cm, Rm.	
1979	50	Sep 22-26 Oct 20-Dec 3	½ SR-SS	PS* <sup>aa</sup>	15/30	* <sup>aa</sup> 100 pt= Cb. 70 pt= Hn Ma, Bd, Wd, Rh, Hm.; 25 pt= Dr Ma, Rn, & all others.; 10 pt= Bt, Gt, Ct, Ga, Wg, Pt, Sh, Sc, Cm, Rm.	
1980	50	Sep 20-24 Oct 18-Dec 1	½ SR-SS	PS* <sup>aa</sup>	15/30		
1981	50	Sep 19-23 Oct 17-Nov 30	½ SR-SS	PS* <sup>aa</sup>	15/30		
1982	50	Sep 18-22 Oct 23-Dec 6	½ SR-SS	PS* <sup>aa</sup>	15/30		
		<b>North Zone (1)</b>	<b>South Zone (1)</b>				
1983	50	Sep 17-21 Oct 15-Nov 28	Sep 17-21 Oct 22-Dec 5	½ SR-SS	PS* <sup>ab</sup>	15/30	* <sup>ab</sup> 100 pt= Cb, Bd. 70 pt= Hn Ma, Wd, Rh, Hm.; 25 pt= Dr Ma, Rn, & all others.; 10 pt= Bt, Gt, Ct, Ga, Wg, Pt, Sh, Sc, Cm, Rm.

Year	Season Length	Season Dates		Shooting Hours	Limits		Additional Bag Limit Information
					Duck Bag/Poss	Coot Bag/Poss	
1984	50	Sep 22-26 Oct 20-Dec 3	Sep 22-26 Oct 27-Dec 10	½ SR-SS	PS* <sup>ab</sup>	15/30	
1985	40	Sep 21-23 Oct 19-Nov 24	Sep 21-23 Oct 26-Dec 1	½ SR-SS	PS* <sup>ac</sup>	15/30	* <sup>ac</sup> 100 pt= Hn Ma, Cb, Bd. 70 pt= Wd, Rh, Hm.; 35 pt= Dr Ma, Pt, Rn, & all others.; 20 pt= Bt, Gt, Ct, Ga, Wg, Sh, Sc, Cm, Rm.
1986	40	Sep 20-24 Oct 18-Nov 21	Sep 20-22 Oct 25-Nov 30	½ SR-SS	PS* <sup>ad</sup>	15/30	* <sup>ad</sup> 100 pt= Hn Ma, Bd. 70 pt= Wd, Rh, Hm.; 35 pt= Dr Ma, Pt, Rn, & all others.; 20 pt= Bt, Gt, Ct, Ga, Wg, Sh, Sc, Cm, Rm.; Closed season on Cb.
		<b>North Zone (2)</b>	<b>South Zone (2)</b>				
1987 (*SH)	40	Sep 19-23 Oct 17-Nov 20	Sep 19-21 Oct 24-Nov 29	½ SR-SS	PS* <sup>ad</sup>	15/30	
1988	30	Oct 8-9 Oct 22-Nov 18	Oct 22-28 Nov 5-27	SR-SS	3/6* <sup>ae</sup>	15/30	* <sup>ae</sup> Only 2 Ma (1 Hn), 2 Wd, 1 Pt, 1 Rh,1 Bd.; 5 merg., only 1 Hm. Closed sea. on Cb.
1989	30	Oct 7-8 Oct 21-Nov 17	Oct 21-27 Nov 4-26	SR-SS	3/6* <sup>ae</sup>	15/30	
1990	30	Oct 6-7 Oct 20-Nov 16	Oct 20-26 Nov 3-25	½ SR-SS	3/6* <sup>ae</sup>	15/30	
1991	30	Oct 5-6 Oct 19-Nov 15	Oct 19-25 Nov 9-Dec 1	½ SR-SS	3/6* <sup>ae</sup>	15/30	
1992	30	Oct 10-13 Oct 24-Nov 18	Oct 24-30 Nov 7-29	½ SR-SS	3/6* <sup>ae</sup>	15/30	
1993	30	Oct 2-4 Oct 23-Nov 18	Oct 23-29 Nov 6-28	½ SR-SS	3/6* <sup>ae</sup>	15/30	
1994	40	Sept 17-19 Oct 15-Nov 20	Oct 1-3 Oct 22-Nov 27	½ SR-SS	3/6* <sup>af</sup>	15/30	* <sup>af</sup> Only 2 Ma (1 Hn), 2 Wd, 1 Pt, 1 Rh,1 Bd, 1 Cb.; 5 merg., only 1 Hm.
1995	50	Sept 23-27 Oct 15-Nov 28	Sept 23-25 Oct 21-Dec 6	½ SR-SS	5/10* <sup>ag</sup>	15/30	* <sup>ag</sup> Only 4 Ma (1 Hn), 2 Wd, 1 Pt, 1 Rh,1 Bd, 1 Cb.; 5 merg., only 1 Hm.
1996	50	Sept 21-25 Oct 19-Dec 2	Sept 21-23 Oct 19-Dec 4	½ SR-SS	5/10* <sup>ah</sup>	15/30	* <sup>ah</sup> Only 4 Ma (1 Hn), 2 Wd, 1 Pt, 2 Rh,1 Bd, 1 Cb.; 5 merg., only 1 Hm.
Youth Day		Oct 5	Oct 5	½ SR-SS	5/10* <sup>ah</sup>		
1997	60	Sept 20-24 Oct 11-Dec 4	Sept 20-24 Oct 18-Dec 11	½ SR-SS	6/12* <sup>ai</sup>	15/30	* <sup>ai</sup> Only 4 Ma (2 Hn), 2 Wd, 3 Pt, 2 Rh,1 Bd, 1 Cb.; 5 merg., only 1 Hm.
Youth Day		Sept 27	Sept 27	½ SR-SS	6/12* <sup>ai</sup>	15/30	
1998 (*HIP)	60	Sept 19-23 Oct 10-Dec 3	Sept 19-23 Oct 17-Dec 10	½ SR-SS	6/12* <sup>aj</sup>	15/30	* <sup>aj</sup> Only 4 Ma (2 Hn), 2 Wd, 1 Pt, 2 Rh,1 Bd, 1 Cb.; 5 merg., only 1 Hm.
Youth Day		Sept 26	Sept 26	½ SR-SS	6/12* <sup>aj</sup>	15/30	
1999	60	Sept 18-22 Oct 16-Dec 9	Sept 18-22 Oct 16-Dec 9	½ SR-SS	6/12* <sup>ak</sup>	15/30	* <sup>ak</sup> Only 4 Ma (2 Hn), 2 Wd, 1 Pt, 2 Rh,1 Bd, 1 Cb & 3 Sc. 5 merg., only 1 Hm.
Youth Day		Oct 9	Oct 9	½ SR-SS	6/12* <sup>ak</sup>	15/30	

Year	Season Length	Season Dates		Shooting Hours	Limits		Additional Bag Limit Information
					Duck Bag/Poss	Coot Bag/Poss	
2000	60	Sept 23-27 Oct 14-Dec 7	Sept 23-27 Oct 14-Dec 7	½ SR-SS	6/12* <sup>ak</sup>	15/30	
Youth Day		Oct 7-8	Oct 7-8	½ SR-SS	6/12* <sup>ak</sup>	15/30	
2001	60	Sept 22-26 Oct 13-Dec 6	Sept 22-26 Oct 13-Dec 6	½ SR-SS	6/12* <sup>ak</sup>	15/30	
Canvasback		Oct. 27-Nov 15	Nov 17-Dec 6				
Youth Day		Oct 6-7	Oct 6-7	½ SR-SS	6/12* <sup>ak</sup>	15/30	
2002	60	Sept 21-25 Oct 12-Dec 5	Sept 21-23 Oct 19-Dec 14	½ SR-SS	6/12* <sup>al</sup>	15/30	* <sup>al</sup> Only 4 Ma (2 Hn), 2 Wd, 1 Pt, 2 Rh,1 Bd, & 3 Sc. 5 merg., only 1 Hm. Closed sea. on Cb
Pintail		Sept 21-25 Oct 12-Nov 5	Sept 21-23 Oct 19-Nov 14				
Youth Day		Oct 5-6	Oct 5-6	½ SR-SS	6/12* <sup>al</sup>	15/30	
2003	60	Sept 20-24 Oct 11-Dec 4	Sept 20-22 Oct 18-Dec 13	½ SR-SS	6/12* <sup>ak</sup>	15/30	* <sup>ak</sup> Only 4 Ma (2 Hn), 2 Wd, 1 Pt, 2 Rh,1 Bd, 1 Cb & 3 Sc. 5 merg., only 1 Hm.
Pintail		Sept 20-24 Oct 11-Nov 4	Sept 20-22 Oct 18-Nov 13				
Canvasback		Oct 18-Nov 16	Oct 25-Nov 23				
Youth Day		Oct 4-5	Oct 4-5	½ SR-SS	6/12* <sup>ak</sup>	15/30	
2004	60	Sept 18-22 Oct 16-Dec 9	Sept 25-26 Oct 16-Dec 12	½ SR-SS	6/12* <sup>ak</sup>	15/30	
Pintail		Sept 18-22 Oct 16-Nov 9	Sept 25-26 Oct 16-Nov 12				
Canvasback		Oct 23-Nov 21	Oct 23-Nov 21				
Youth Day		Oct 2-3	Oct 9-10	½ SR-SS	6/12* <sup>ak</sup>	15/30	
2005	60	Sept 17-21 Oct 15-Dec 8	Sept 24-28 Oct 22-Dec 15	½ SR-SS	6/12* <sup>am</sup>	15/30	* <sup>am</sup> Only 4 Ma (2 Hn), 2 Wd, 1 Pt, 2 Rh,1 Bd, 1 Cb & 2 Sc. 5 merg., only 1 Hm.
Canvasback		Oct 22-Nov 20	Oct 29-Nov 27				
Youth Day		Oct 8-9	Oct 8-9	½ SR-SS	6/12* <sup>am</sup>	15/30	
		<b>North Zone (3)</b>	<b>South Zone (3)</b>				
2006	60	Sept 23-27 Oct 14-Dec 7	Sept 23-27 Oct 21-Dec 14	½ SR-SS	6/12* <sup>an</sup>	15/30	* <sup>an</sup> Only 4 Ma (2 Hn), 2 Wd, 1 Pt, 2 Rh,1 Bd, 1 Cb & 2 Sc. 5 merg., only 2 Hm.
Youth Day		Oct 7-8	Oct 7-8	½ SR-SS	6/12* <sup>an</sup>	15/30	
2007	60	Sept 22-26 Oct 13-Dec 6	Sept 22-26 Oct 20-Dec 13	½ SR-SS	6/12* <sup>ao</sup>	15/30	* <sup>ao</sup> Only 4 Ma (2 Hn), 2 Wd, 1 Pt, 2 Rh,1 Bd, 2 Cb & 2 Sc. 5 merg., only 2 Hm.
Youth Day		Oct 6-7	Oct 6-7	½ SR-SS	6/12* <sup>ao</sup>	15/30	
2008	60	Sept 20-24 Oct 18-Dec 11	Sept 20-24 Oct 18-Dec 11	½ SR-SS	6/12* <sup>ap</sup>	15/30	* <sup>ap</sup> Only 4 Ma (2 Hn), 3 Wd, 1 Pt, 2 Rh,1 Bd, & 1 Sc (Nov 1-20 limit 2 Sc). 5 merg., only 2 Hm. Closed season on Cb.

Year	Season Length	Season Dates	Shooting Hours	Limits		Additional Bag Limit Information		
				Duck Bag/Poss	Coot Bag/Poss			
Youth Day		Oct 4-5	Oct 4-5	½ SR-SS	6/12 <sup>*ap</sup>	15/30		
2009	60	Sept 19-23 Oct 10-Dec 3	Sept 19-23 Oct 17-Dec 10	½ SR-SS	6/12 <sup>*aq</sup>	15/30	<sup>*aq</sup> Only 4 Ma (2 Hn), 3 Wd, 1 Pt, 2 Rh,1 Bd, 1 Cb, & 2 Sc. 5 merg., only 2 Hm.	
Youth Day		Oct 3-4	Oct 3-4	½ SR-SS	6/12 <sup>*aq</sup>	15/30		
2010	60	Sept 18-22 Oct 16-Dec 9	Sept 18-22 Oct 23-Dec 16	½ SR-SS	6/12 <sup>*ar</sup>	15/30	<sup>*ar</sup> Only 4 Ma (2 Hn), 3 Wd, 2 Pt, 2 Rh,1 Bd, 1 Cb, & 2 Sc. 5 merg., only 2 Hm.	
Youth Day		Oct 2-3	Oct 9-10	½ SR-SS	6/12 <sup>*ar</sup>	15/30		
		<b>North Zone (4)</b>	<b>South Zone (4)</b>					
2011	60	Sept 17-21 Oct 15-Dec 8	Sept 17-21 Oct 22-Dec 15	½ SR-SS	6/12 <sup>*ar</sup>	15/30		
Youth Day		Oct 1-2	Oct 8-9	½ SR-SS	6/12 <sup>*ar</sup>	15/30		
		<b>North Zone (5)</b>	<b>South Zone (5)</b>	<b>Missouri River (5)</b>				
2012	60	Sept 22-26 Oct 13-Dec 6	Sept 22-26 Oct 20-Dec 13	Sept 22-26 Oct 27-Dec 20	½ SR-SS	6/12 <sup>*as</sup>	15/30	<sup>*as</sup> Only 4 Ma (2 Hn), 3 Wd, 2 Pt, 2 Rh,1 Bd, 1 Cb, & 4 Sc. 5 merg., only 2 Hm.
Youth Day		Oct 6-7	Oct 13-14	Oct 20-21	½ SR-SS	6/12 <sup>*as</sup>	15/30	
2013	60	Sept 21-25 Oct 12-Dec 5	Sept 21-25 Oct 19-Dec 12	Sept 21-25 Oct 26-Dec 19	½ SR-SS	6/18 <sup>*at</sup>	15/45	<sup>*at</sup> Only 4 Ma (2 Hn), 3 Wd, 2 Pt, 2 Rh,1 Bd, 2 Cb, & 4 Sc. 5 merg., only 2 Hm.
Youth Day		Oct 5-6	Oct 12-13	Oct 19-20	½ SR-SS	6/18 <sup>*at</sup>	15/45	
2014	60	Oct 4-19 Oct 25-Dec 7	Oct 4-8 Oct 18-Dec 11	Oct 4-8 Oct 25-Dec 18	½ SR-SS	6/18 <sup>*at</sup>	15/45	<sup>*at</sup> Only 4 Ma (2 Hn), 3 Wd, 2 Pt, 2 Rh,1 Bd, 2 Cb, & 4 Sc. 5 merg., only 2 Hm.
Youth Day		Sep 27-28	Oct 11-12	Oct 18-19	½ SR-SS	6/18 <sup>*at</sup>	15/45	
Teal		Sep 6-21	Sep 6-21	Sep 6-21	SR-SS	6/18		
2015	60	Oct 3-18 Oct 24-Dec 6	Oct 3-7 Oct 17-Dec 10	Oct 3-7 Oct 24-Dec 17	½ SR-SS	6/18 <sup>*at</sup>	15/45	<sup>*at</sup> Only 4 Ma (2 Hn), 3 Wd, 2 Pt, 2 Rh,1 Bd, 2 Cb, & 4 Sc. 5 merg., only 2 Hm.
Youth Day		Sep 26-27	Oct 10-11	Oct 17-18	½ SR-SS	6/18 <sup>*at</sup>	15/45	
Teal		Sep 5-20	Sep 5-20	Sep 5-20	SR-SS	6/18		
2016	60	Sep 24-Oct 2 Oct 15-Dec 4	Oct 1-5 Oct 22-Dec 15	Oct 8-9 Oct 22-Dec 18	½ SR-SS	6/18 <sup>*at</sup>	15/45	<sup>*at</sup> Only 4 Ma (2 Hn), 3 Wd, 2 Pt, 2 Rh,1 Bd, 2 Cb, & 4 Sc. 5 merg., only 2 Hm.
Youth Day		Sep 17-18	Sep 24-25	Oct 1-2	½ SR-SS	6/18 <sup>*at</sup>	15/45	
Teal		Sep 3-11	Sep 3-11	Sep 3-18	SR-SS	6/18		
		<b>North Zone (6)</b>	<b>South Zone (6)</b>	<b>Missouri River (6)</b>				
2017	60	Sep 23-Oct 1 Oct 14-Dec 3	Sep 30-Oct 4 Oct 21-Dec 14	Oct 7-8 Oct 21-Dec 17	½ SR-SS	6/18 <sup>*at</sup>	15/45	<sup>*at</sup> Only 4 Ma (2 Hn), 3 Wd, 1 Pt, 2 Rh,2 Bd, 2 Cb, & 3 Sc. 5 merg., only 2 Hm
Youth Day		Sep 16-17	Sep 23-24	Sep 30-Oct 1	½ SR-SS	6/18 <sup>*at</sup>	15/45	
Teal		Sep 2-10	Sep 2-10	Sep 2-17	SR-SS	6/18		

Year	Season Length	Season Dates	Shooting Hours	Limits		Additional Bag Limit Information		
				Duck Bag/Poss	Coot Bag/Poss			
2018	60	Sep 29-Oct 5 Oct 13-Dec 4	Oct 4-12 Oct 20-Dec 11	Oct 13-19 Oct 17-Dec 18	½ SR-SS	6/18 <sup>*at</sup>	15/45	*atOnly 4 Ma (2 Hn), 3 Wd, 1 Pt, 2 Rh, 2 Bd, 2 Cb, & 3 Sc. 5 merg., only 2 Hm
Youth Day		Sep 22-23	Sep 29-30	Oct 6-Oct 7	½ SR-SS	6/18 <sup>*at</sup>	15/45	
Teal		Sep 1-16	Sep 1-16	Sep 1-16	SR-SS	6/18		
2019	60	Sep 28-Oct 4 Oct 12-Dec 3	Oct 5-11 Oct 19-Dec 10	Oct 12-18 Oct 27-Dec 17	½ SR-SS	6/18 <sup>*at</sup>	15/45	*atOnly 4 Ma (2 Hn), 3 Wd, 1 Pt, 2 Rh, 2 Bd, 2 Cb, & 3 Sc. 5 merg., only 2 Hm
Youth Day		Sep 21-22	Sep 28-29	Oct 5-Oct 6	½ SR-SS	6/18 <sup>*at</sup>	15/45	
Teal		Sep 1-16	Sep 1-16	Sep 1-16	SR-SS	6/18		
		<b>North Zone (5)</b>	<b>Central Zone (7)</b>	<b>South Zone (7)</b>				
2020	60	Sep 26-Oct 2 Oct 10-Dec 1	Oct 3-9 Oct 17-Dec 8	Oct 10-16 Oct 24-Dec 1	½ SR-SS	6/18 <sup>*at</sup>	15/45	*atOnly 4 Ma (2 Hn), 3 Wd, 1 Pt, 2 Rh, 2 Bd, 2 Cb, & 1 Sc. 1 <sup>st</sup> 15 days, 2 Sc. 45 days 5 merg., only 2 Hm
Youth Day		Sep 19-20	Sep 26-27	Oct 3-Oct 4	½ SR-SS	6/18 <sup>*at</sup>	15/45	
Teal		Sep 1-16	Sep 1-16	Sep 1-16	SR-SS	6/18		
2021	60	Oct 2-8 Oct 16-Dec 7	Oct 9-15 Oct 23-Dec 14	Oct 16-22 Oct 30-Dec 21	½ SR-SS	6/18 <sup>*at</sup>	15/45	*atOnly 4 Ma (2 Hn), 3 Wd, 1 Pt, 2 Rh, 2 Bd, 2 Cb, & 1 Sc. 1 <sup>st</sup> 15 days, 2 Sc. 45 days 5 merg., only 2 Hm
Youth Day		Sep 25-26	Oct 2-3	Oct 9-10	½ SR-SS	6/18 <sup>*at</sup>	15/45	
Teal		Sep 1-16	Sep 1-16	Sep 1-16	SR-SS	6/18		
2022	60	Oct 1-7 Oct 15-Dec 6	Oct 8-14 Oct 22-Dec 13	Oct 15-21 Oct 29-Dec 20	½ SR-SS	6/18 <sup>*at</sup>	15/45	*atOnly 4 Ma (2 Hn), 3 Wd, 1 Pt, 2 Rh, 2 Bd, 2 Cb, & 1 Sc. 1 <sup>st</sup> 15 days, 2 Sc. 45 days 5 merg., only 2 Hm
Youth Day		Sep 24-25	Oct 1-2	Oct 8-9	½ SR-SS	6/18 <sup>*at</sup>	15/45	
Teal		Sep 1-16	Sep 1-16	Sep 1-16	SR-SS	6/18		

**DUCK SPECIES:** Ma = Mallard, Wd = Wood duck, Bd = Black duck, Cb = Canvasback, Rh = Redhead, Ru = Ruddy duck, Bu = Bufflehead, Pt = Pintail, Wg = Wigeon, Sc = Scaup, Rn = Ring-necked duck Bt = Blue-winged teal, Gt = Green-winged teal, Ga = Gadwall, Sh = Shoveler, Ct = Cinnamon teal, Md = Mottled duck, (Hn = Hen, Dr = Drake) Cm = Common merganser, Rm = Red-breasted merganser, Hm = Hooded merganser

**SHOOTING HOURS:** SR to SS = sunrise to sunset, ½ SR to SS = ½ hour before sunrise to sunset, ¼ SR to ½ SS = ¼ hour before sunrise to ½ hour before sunset, ½ SR to 1 SS = ½ hour before sunrise to 1 hour before sunset. Shooting hours began at 12:00 pm (Noon) on opening day for hunting seasons 1931-33, 1947-54, & 1959-63. Iowa set daily shooting hours at sunrise or later during 27 of the 72 hunting seasons between 1918-89. Federal regulations set daily shooting hours at sunrise or later during 16 of the 90 hunting seasons between 1918-2007.

**LIMIT: BAG** = Daily bag limit,

**POSS** = Possession limit

**POSS LIMIT** = Twice the daily bag limit unless otherwise noted.

**PS** = Point System was used to determine the daily bag limit. The daily bag limit was obtained when the point value of the last duck taken, added to the point values of the previous ducks bagged, equaled or exceeded 100 points.

**SPEC. REGULATIONS:** Wood duck season was closed by Federal regulation from the 1918 through the 1940 season. Canvasback and redhead seasons were closed on the Mississippi River from 1975 thru 1979. Canvasback season was closed on the Mississippi River in 1980-82. Canvasback season closed on Pools 9 & 19 on the Mississippi River from 1983-85. Canvasback season closed statewide 1936-37, 1960-63, 1972, 1986-93, 2002, 2008.

**DUCK ZONE BOUNDARY (1)** = a line running from the Nebraska-Iowa border along I-80 to the Iowa-Illinois border.

**DUCK ZONE BOUNDARY (2)** = a line running from the Nebraska-Iowa border along St Hwy 175, east to St Hwy 37, southeast to US Hwy 59, south to I-80 and along I-80 to the Iowa-Illinois border.

**DUCK ZONE BOUNDARY (3)** = a line running from the Nebraska-Iowa border along St Hwy 175, east to St Hwy 37, southeast to St Hwy 183, northeast to St Hwy 141, east to US Hwy 30, and along US Hwy 30 to the Iowa-Illinois border.



**DUCK ZONE BOUNDARY (4)** = a line beginning on the South Dakota-Iowa border at I-29, southeast to Woodbury Co Rd D38, east to Woodbury Co Rd K45, southeast to St Hwy 175, east to St Hwy 37, southeast to St Hwy 183, northeast to St Hwy 141, east to US Hwy 30, and along US Hwy 30 to the Iowa-Illinois border.

**DUCK ZONE BOUNDARY (5)** = The North Zone is all of Iowa north of a line beginning on the on the South Dakota-Iowa border at I-29, southeast to St Hwy 175, east to St Hwy 37, southeast to St Hwy 183, northeast to St Hwy 141, east to US Hwy 30, and along US Hwy 30 to the Iowa-Illinois border. The Missouri River Zone includes all lands and water in Iowa west of I-29 and north of Hwy 175. The South Zone is the remainder of the state not in the North or Missouri River Zones.

**DUCK ZONE BOUNDARY (6)** = The North Zone is all of Iowa north of a line beginning on the on the South Dakota-Iowa border at I-29, southeast to St Hwy 175, east to St Hwy 37, southeast to St Hwy 183, northeast to St Hwy 141, east to US Hwy 30, and along US Hwy 30 to the Iowa-Illinois border. The Missouri River Zone includes all lands and water in Iowa west of I-29 and north of Hwy 175. The South Zone is the remainder of the state not in the North or Missouri River Zones.

**DUCK ZONE BOUNDARY (7)** = The North Zone is all of Iowa north of a line beginning on the on the South Dakota-Iowa border at I-29, southeast along I-29 to St Hwy 20 to the Iowa-Illinois border. The South Zone is that part of Iowa west of I-29 and south of St Hwy 92 east to the Iowa-Illinois border. The South Zone is the remainder of the state.

**(\*SH)** = Steel shot required statewide for hunting all migratory gamebirds except woodcock.

**STEEL SHOT REGULATIONS HISTORY:** In 1977, no person could hunt waterfowl on all waters and a 150-yard zone thereto in Fremont and Mills Counties while possessing 12-gauge shotshells loaded with any shot other than steel. Drainage ditches, temporary sheet water and the Missouri River were exempt. During 1978 & 1979, no person could hunt waterfowl on all waters and a 150-yard zone thereto in Fremont and Mills Counties and on the Upper Mississippi Wildlife Refuge while possessing 12-gauge shotshells loaded with any shot other than steel. Drainage ditches, temporary sheet water, and the Missouri River in Mills and Fremont Counties were exempt. In 1980, Sweet Marsh in Bremer County, Big Marsh in Butler County, and the Princeton Area in Scott County, were added to the areas previously described in the steel shot regulations and the rule now applied to all shotgun gauges. In 1981, Green Island in Jackson County was added to the list of areas previously described where steel shot was required. During the 1982 through 1984 seasons, the previously described list of areas for steel shot remained the same. During the 1985 & 1986 seasons, no person could hunt migratory game birds except woodcock on any lands or waters under the jurisdiction of the State Conservation Commission, the US Government, or any county conservation board, or on all waters and a 150-yard zone adjacent to these waters, including reservoirs, lakes, ponds, marshes, bayous, swamps, rivers, streams, and seasonally flooded areas of all types, while possessing shotshells loaded with shot other than steel shot. Temporary sheet water, farm ponds less than 2 acres in size, and streams with water less than 25 feet in width where the hunting was occurring were exempt. In addition, no person could hunt waterfowl in the zone bounded on the west by the Missouri River, on the south by I-680, on the east by I-29 and on the north by the Soldier River, while possessing any shotshells loaded with shot other than steel shot. From 1987 to the present, no person could hunt migratory game birds except woodcock on all lands and waters within the State of Iowa while possessing any shotshell loaded with shot other than steel shot, or copper or nickel coated steel shot. In 1998, nontoxic shot was required for any shotgun shooting (except turkey hunting) on most DNR managed wildlife areas in Iowa's prairie pothole region that had waterfowl production potential.

**(\*HIP)** = First year migratory bird hunters in Iowa registered (by phone) for the federal Harvest Information Program (HIP).

Table 4.4 Goose seasons in Iowa.

Year	Goose Species	Season Length	Season Dates	Shooting Hours	Limit Bag/Poss	Additional Bag Limit Information
Statewide						
1917	Ca/Sn/Wf	227	Sep 1-Apr 15	Unknown	?	
1918	Ca/Sn/Wf	107	Sep 16-Dec 31	SR-SS	8/none	
1919	Ca/Sn/Wf	107	Sep 16-Dec 31	SR-SS	8/none	
1920	Ca/Sn/Wf	107	Sep 16-Dec 31	SR-SS	8/none	
1921	Ca/Sn/Wf	107	Sep 16-Dec 31	SR-SS	8/none	
1922	Ca/Sn/Wf	107	Sep 16-Dec 31	SR-SS	8/none	
1923	Ca/Sn/Wf	107	Sep 16-Dec 31	SR-SS	8/none	
1924	Ca/Sn/Wf	107	Sep 16-Dec 31	½ SR-SS	8/50 WF	WF = all waterfowl combined
1925	Ca/Sn/Wf	107	Sep 16-Dec 31	½ SR-SS	8/50 WF	
1926	Ca/Sn/Wf	107	Sep 16-Dec 31	½ SR-SS	8/50 WF	
1927	Ca/Sn/Wf	107	Sep 16-Dec 31	½ SR-SS	8/50 WF	
1928	Ca/Sn/Wf	107	Sep 16-Dec 31	½ SR-SS	8/50 WF	
1929	Ca/Sn/Wf	107	Sep 16-Dec 31	½ SR-SS	8/50 WF	
1930	Ca/Sn/Wf	107	Sep 16-Dec 31	½ SR-SS	4/8	
1931	Ca/Sn/Wf	30	Oct 20-Nov 19	½ SR-SS	4/8	
1932	Ca/Sn/Wf	61	Oct 1-Nov 30	½ SR-SS	4/8	
1933	Ca/Sn/Wf	61	Oct 1-Nov 30	½ SR-SS	4/8	
1934	Ca/Sn/Wf	30	Oct 10-Nov 18	SR-SS	4/8	(included 10 rest days)
1935	Ca/Sn/Wf	30	Oct 21-Nov 19	7am-4pm	4/4	
1936	Ca/Sn/Wf	30	Nov 1-Nov 30	7am-4pm	4/4	
1937	Ca/Sn/Wf	30	Oct 9-Nov 7	7am-4pm	5/5	
1938	Ca/Sn/Wf	45	Oct 15-Nov 28	7am-4pm	5/10	
1939	Ca/Sn/Wf	45	Oct 22-Dec 5	7am-4pm	4/8	
1940	Ca/Sn/Wf	60	Oct 16-Dec 14	SR-4pm	3/6	
1941	Ca/Sn/Wf	60	Oct 16-Dec 14	SR-4pm	3/6	
1942	Ca/Sn/Wf	70	Oct 15-Dec 23	SR-SS	2/4	
1943	Ca/Sn/Wf	70	Sep 25-Dec 3	½ SR-SS	2/4	
1944	Ca/Sn/Wf	80	Sep 20-Dec 8	½ SR-SS	2/4* <sup>a</sup>	* <sup>a</sup> Sn goose poss. limit = 8.

Year	Goose Species	Season Length	Season Dates	Shooting Hours	Limit Bag/Poss	Additional Bag Limit Information
1945	Ca/Sn/Wf	80	Sep 20-Dec 8	½ SR-SS	2/4* <sup>a</sup>	
1946	Ca/Sn/Wf	45	Oct 26-Dec 9	½ SR-½ SS	4/4* <sup>b</sup>	* <sup>b</sup> Closed Ca goose season.
1947	Ca/Sn/Wf	30	Oct 21-Nov 19	½ SR-1 SS	4/4* <sup>c</sup>	* <sup>c</sup> Only 1 Ca or 1 Wf goose in bag.
1948	Ca/Sn/Wf	30	Oct 29-Nov 27	½ SR-1 SS	4/4* <sup>c</sup>	
1949	Ca/Sn/Wf	40	Oct 21-Nov 29	½ SR-1 SS	4/4* <sup>c</sup>	
1950	Ca/Sn/Wf	35	Oct 20-Nov 23	½ SR-1 SS	4/4* <sup>c</sup>	
1951	Ca/Sn/Wf	45	Oct 12-Nov 25	½ SR-1 SS	5/5* <sup>d</sup>	* <sup>d</sup> Only 2 Ca or 2 Wf, or 1 Ca & 1 Wf.
1952	Ca/Sn/Wf	55	Oct 8-Dec 1	½ SR-1 SS	5/5* <sup>d</sup>	
1953	Ca/Sn/Wf	55	Oct 8-Dec 1	½ SR-SS	5/5* <sup>d</sup>	
1954	Ca/Sn/Wf	55	Oct 15-Dec 8	½ SR-1 SS	5/5* <sup>d</sup>	
1955	Ca/Sn/Wf	70	Oct 8-Dec 16	½ SR-½ SS	5/5* <sup>d</sup>	
1956	Ca/Sn/Wf	70	Oct 6-Dec 14	½ SR-½ SS	5/5* <sup>d</sup>	
1957	Ca/Sn/Wf	70	Oct 5-Dec 13	½ SR-SS	5/5* <sup>d</sup>	
1958	Ca/Sn/Wf	70	Oct 4-Dec 12	½ SR-SS	5/5* <sup>d</sup>	
1959	Ca/Sn/Wf	70	Oct 7-Dec 15	SR-SS	5/5* <sup>d</sup>	
1960	Ca/Sn/Wf	70	Oct 8-Dec 16	½ SR-SS	5/5* <sup>d</sup>	
1961	Ca/Sn/Wf	70	Oct 7-Dec 15	SR-SS	5/5* <sup>d</sup>	
1962	Ca/Sn/Wf	70	Oct 6-Dec 14	SR-SS	5/5* <sup>d</sup>	
1963	Ca/Sn/Wf	70	Oct 5-Dec 13	SR-SS	5/5* <sup>d</sup>	
1964	Ca/Sn/Wf	70	Oct 3-Dec 11	SR-SS	5/5* <sup>d</sup>	
1965	Ca/Sn/Wf	70	Oct 2-Dec 10	½ SR-SS	5/5* <sup>d</sup>	
1966	Ca/Sn/Wf	70	Oct 1-Dec 9	½ SR-SS	5/5* <sup>d</sup>	
1967	Ca/Sn/Wf	70	Sep 30-Dec 8	½ SR-SS	5/5* <sup>d</sup>	
1968	Ca/Sn/Wf	70	Sep 28-Dec 6	½ SR-SS	5/5* <sup>d</sup>	
1969	Ca/Sn/Wf	70	Oct 4-Dec 12	½ SR-SS	5/5* <sup>d</sup>	
1970	Ca	23	Oct 3-Nov 26	SR-SS	1/1* <sup>e</sup>	* <sup>e</sup> Bag & pos. lim.= 5 w/ only 1 Ca, 1 Ca + 1 WF, or 2 Wf.
	Sn/Wf	70	Oct 3-Dec 11		5/5* <sup>e</sup>	
1971	Ca	23	Oct 9-Oct 31	½ SR-SS	1/1* <sup>e</sup>	
	Sn/Wf	70	Oct 2-Dec 10		5/5* <sup>e</sup>	
1972	Ca	23	Oct 1-Nov 9	SR-SS	1/2* <sup>f</sup>	

Year	Goose Species	Season Length	Season Dates		Shooting Hours	Limit Bag/Poss	Additional Bag Limit Information
	Sn/Wf	70	Oct 7-Dec 15			5/5* <sup>f</sup>	* <sup>f</sup> Bag lim.= 5 w/ only 1 Ca, 1 Ca + 1 WF, or 2 Wf. Pos. lim.= 5 w/ only 2 Ca, 1 Ca + 1 WF, or 2 Wf.
First year state duck stamp required							
1973	Ca	40	Oct 1-Nov 9		SR-SS	1/2* <sup>g</sup>	* <sup>g</sup> Bag lim.= 5 w/ only 1 Ca & 2 Wf. Pos lim.= 5 w/ only 2 Ca & 2 Wf.
	Sn/Wf	70	Oct 1-Dec 9			5/5* <sup>g</sup>	
1974	Ca	45	Oct 1-Nov 14		SR-SS	1/2* <sup>g</sup>	
	Sn/Wf	70	Oct 1-Dec 9			5/5* <sup>g</sup>	
1975	Ca	45	Oct 1-Nov 14		½ SR-SS	2/2* <sup>h</sup>	* <sup>h</sup> Bag lim.= 5 w/ only 2 Ca & 2 Wf. Pos lim.= Bag lim.
	Sn/Wf	70	Oct 1-Dec 9			5/10* <sup>h</sup>	
1976	Ca	45	Oct 1-Nov 14		½ SR-SS	5/10* <sup>h</sup>	
	Sn/Wf	70	Oct 1-Dec 9			5/10* <sup>h</sup>	
1977	Ca	45	Oct 1-Nov 14		SR-SS	5/10* <sup>h</sup>	
	Sn/Wf	70	Oct 1-Dec 9			5/10* <sup>h</sup>	
1978	Ca/Sn/Wf	70	Oct 1-Dec 9		½ SR-SS	5/10* <sup>h</sup>	
1979	Ca/Sn/Wf	70	Sep 29-Dec 7		½ SR-SS	5/10* <sup>h</sup>	
1980	Ca/Sn/Wf	70	Oct 4-Dec 12		½ SR-SS	5/10* <sup>i</sup>	* <sup>i</sup> Bag lim.= 5 w/ only 2 Ca & 2 Wf. Pos lim.= 10 w/ only 4 Ca & 4 Wf.
1981	Ca/Sn/Wf	70	Oct 3-Dec 11		½ SR-SS	5/10* <sup>i</sup>	
1982	Ca/Sn/Wf	70	Oct 2-Dec 10		½ SR-SS	5/10* <sup>i</sup>	
1983	Ca/Sn/Wf	70	Oct 1-Dec 9		½ SR-SS	5/10* <sup>i</sup>	
			<b>Most of State</b>	<b>SW Zone (1)</b>			
1984	Ca/Sn/Wf	70	Sep 29-Dec 7	Oct 13-Dec 21	½ SR-SS	5/10* <sup>i</sup>	
1985	Ca/Sn/Wf	70	Sep 28-Dec 6	Oct 12-Dec 20	½ SR-SS	5/10* <sup>i</sup>	
1986	Ca/Sn/Wf	70	Oct 4-Dec 12	Oct 18-Dec 26	½ SR-SS	5/10* <sup>i</sup>	
1987	Ca	45	Oct 3-Nov 16	Oct 17-Nov 30	½ SR-SS	2/4* <sup>i</sup>	
(*SH)	Sn/Wf	70	Oct 3-Dec 11	Oct 17-Dec 25		5/10* <sup>i</sup>	
1988	Ca	45	Oct 1-Nov 14	Oct 15-Nov 28	SR-SS	2/4* <sup>i</sup>	
	Sn/Wf	70	Oct 1-Dec 9	Oct 15-Dec 23		5/10* <sup>i</sup>	
			<b>Most of State</b>	<b>SW Zone (2)</b>			
1989	Ca	45	Sep 30-Nov 13	Oct 14-Nov 27	SR-SS	2/4* <sup>j</sup>	* <sup>j</sup> Bag lim.= 7 w/ only 2 Ca & 2 Wf. Pos lim.= 14 w/ only 4 Ca & 4 Wf.
	Sn/Br	80	Sep 30-Dec 18	Oct 14-Jan 1		7/14* <sup>j</sup>	
	Wf	70	Sep 30-Dec 8	Oct 14-Dec 22		2/4* <sup>j</sup>	

Year	Goose Species	Season Length	Season Dates		Shooting Hours	Limit Bag/Poss	Additional Bag Limit Information
1990	Ca/Wf/Br	70	Sep 29-Dec 7	Oct 13-Dec 21	½ SR-SS	2/4* <sup>j</sup>	
	Sn	80	Sep 29-Dec 17	Oct 13-Dec 31			
1991	Ca/Wf/Br	70	Sep 28-Dec 6	Oct 12-Dec 20	½ SR-SS/1	2/4* <sup>j</sup>	
	Sn	80	Sep 28-Dec 16	Oct 12-Dec 30			
1992	Ca/Wf/Br	70	Oct 3-Dec 11	Oct 10-Dec 18	½ SR-SS/1	2/4* <sup>j</sup>	
	Sn	80	Oct 3-Dec 21	Oct 10-Dec 28			
			<b>North Zone (1)</b>	<b>South Zone (1)</b>			
1993	Ca/Wf/Br	55	Oct 9-Dec 2	Oct 23-Dec 16	½ SR-SS	2/4* <sup>j</sup>	
	Sn	80	Oct 9-Dec 27	Oct 23-Jan 10			
1994	Ca/Wf/Br	55	Oct 8-Dec 1	Oct 22-Dec 15	½ SR-SS	2/4* <sup>j</sup>	
	Sn	102	Oct 1-Dec 10	Oct 1-Jan 10			
1995	Ca/Wf/Br	70	Sep 30-Dec 8	Oct 14-Dec 22	½ SR-SS	2/4* <sup>k</sup>	
	Sn	107	Sep 30-Jan 10	Oct 14-Jan 10			
			None	Feb 24-Mar 10, 1996 south of Interstate 80.	*k) Bag lim.= 10 w/ only 2 Ca & 2 Wf. Pos lim.= 20 w/ only 4 Ca & 4 Wf.		
1996	Ca	2	Sep 14-15	None	½ SR-SS	2/4* <sup>l</sup>	* <sup>l</sup> Bag lim.= 2 Ca.
	Ca/Wf/Br	70	Sep 28-Dec 6	Oct 5-Oct 13	½ SR-SS	2/4* <sup>m</sup>	* <sup>m</sup> Bag lim.= 2 Ca, 2 Wf, & 2 Br. Pos lim.= 4 Ca, 4 Wf, & 4 Br.
	Sn	107		Oct 19-Dec 18			
				Oct 12-Jan 10, 1997	½ SR-SS	10/30	
				Feb 22-Mar 9, 1997			
1997	Ca	2	Sep 13-14	None	½ SR-SS	2/4* <sup>l</sup>	
	Ca/Wf/Br	70	Oct 4-Dec 12	Oct 4-Oct 12	½ SR-SS	2/4* <sup>m</sup>	
				Oct 18-Dec 17			
				Oct 4-Dec 31	½ SR-SS	10/30	
				Feb 21-Mar 10, 1998			
1998 (*HIP)	Ca	2	Sep 12-13 <sup>b</sup>	None	½ SR-SS	2/4* <sup>l</sup>	
	Ca/Wf/Br	70	Oct 3-Dec 11	Oct 3-Oct 11	½ SR-SS	a)2/4* <sup>m</sup>	
				Oct 17-Dec 16			
				Oct 3-Dec 31	½ SR-SS	20/none	
				Feb 20-Mar 10, 1999			
				March 11-April 16, 1999	½ SR-SS/½	20/none	
1999	Ca	2	Sep 11-12 <sup>b</sup>	None	½ SR-SS	2/4* <sup>l</sup>	

Year	Goose Species	Season Length	Season Dates		Shooting Hours	Limit Bag/Poss	Additional Bag Limit Information
	Ca/Wf/Br	70	Oct 2-Dec 10	Oct 2-Oct 10 Oct 16-Dec 15	½ SR-SS	2/4* <sup>m</sup>	
	Sn/Ro	107	Oct 2-Dec 26		½ SR-SS	20/none	
	Sn/Ro	°Cons. Or.	Feb 19-Mar 10, 2000				
	Sn/Ro	°Cons. Or.	March 11-April 16, 2000		½ SR-SS/½	20/none	
2000	Ca	2	Sep 9-10 <sup>b</sup>	None	½ SR-SS	2/4* <sup>l</sup>	
	Ca/Wf/Br	70	Sep 30-Dec 8	Sep 30-Oct 15 Nov 4-Dec 27	½ SR-SS	2/4* <sup>m</sup>	
	Sn/Ro	107	Sep 30-Jan 14, 2001		½ SR-SS	20/none	
	Sn/Ro	°Cons. Or.	Feb 15-April 15, 2001		½ SR-SS/½	20/none	
2001	Ca/Wf/Br	70	Sep 29-Dec 7	Sep 29-Oct 21 Nov 10-Dec 26	½ SR-SS	2/4* <sup>m</sup>	
	Sn/Ro	107	Sep 29-Jan 13, 2002		½ SR-SS	20/none	
	Sn/Ro	°Cons. Or.	Feb 2-April 15, 2002		½ SR-SS/½	20/none	
2002	Ca/Wf/Br	70	Sep 28-Dec 6	Sep 28-Oct 20 Nov 9-Dec 25	½ SR-SS	2/4* <sup>m</sup>	* <sup>m</sup> Bag lim.= 2 Ca, 2 Wf, & 2 Br. Pos lim.= 4 Ca, 4 Wf, & 4 Br.
	Sn/Ro	107	Sep 28-Jan 12, 2003		½ SR-SS	20/none	
	Sn/Ro	°Cons. Or.	Feb 1-April 15, 2003		½ SR-SS/½	20/none	
2003	Ca	15	Sep 1-15 in metro zones <sup>d</sup>		½ SR-SS	3/6* <sup>n</sup>	* <sup>n</sup> Bag lim.= 3 Ca.
	Ca & Br	70	Sep 27-Dec 5	Sep 27-Oct 19 Nov 8-Dec 24	½ SR-SS	2/4 * <sup>o</sup>	* <sup>o</sup> Bag lim.= 2 Ca & 2 Br. Pos lim.= 4 Ca & 4 Br.
	Wf	86	Sept 27-Dec 21	Sept 27-Dec 21	½ SR-SS	2/4	
	Sn/Ro	107	Sep 27-Jan 11, 2004		½ SR-SS	20/none	
	Sn/Ro	°Cons. Or.	Jan 12-April 15, 2004		½ SR-SS/½	20/none	
			<b>North Zone (2)</b>	<b>South Zone (2)</b>			
2004	Ca	15	Sep 1-15 in metro zones <sup>d</sup>		½ SR-SS	3/6* <sup>n</sup>	
	Ca	2	Sep 11-12	None	½ SR-SS	2/4* <sup>l</sup>	* <sup>l</sup> Bag lim.= 2 Ca.
	Ca & Br	60	Sep 25-Oct 3	Oct 2-10	½ SR-SS	2/4* <sup>o</sup>	
			Oct 16-Dec 5	Oct 30-Dec 19			

Year	Goose Species	Season Length	Season Dates		Shooting Hours	Limit Bag/Poss	Additional Bag Limit Information
	Wf	86	Sept 25-Dec 19	Oct 2-Dec 26	½ SR-SS	2/4	
	Sn/Ro	107	Sep 25-Jan 9, 2005		½ SR-SS	20/none	
	Sn/Ro	Cons. Or.	Jan 10-April 15, 2005		½ SR-SS/½	20/none	
2005	Ca	15	Sep 1-15 in metro zones <sup>d</sup>		½ SR-SS	3/6* <sup>n</sup>	
	Ca	2	Sep 10-11	Sep 10-11	½ SR-SS	2/4* <sup>i</sup>	
	Ca & Br	70	Oct 1-9	Oct 1-9	½ SR-SS	2/4* <sup>o</sup>	
			Oct 15-Dec 4	Oct 22-Dec 4			
			Dec 24-Jan 2	Dec 24-Jan 9			
	Wf	72	Oct 1-Dec 11	Oct 1-Dec 11	½ SR-SS	2/4	
	Sn/Ro	107	Oct 1-Jan 15, 2006		½ SR-SS	20/none	
	Sn/Ro	Cons. Or.	Jan 16-April 15, 2006		½ SR-SS/½	20/none	
2006	Ca	15	Sep 1-15 in metro zones <sup>d</sup>		½ SR-SS	3/6* <sup>n</sup>	
	Ca	2	Sep 9-10	Sep 9-10	½ SR-SS	2/4* <sup>i</sup>	
	Ca & Br	90	Sep 30-Dec 10	Sep 30-Oct 8	½ SR-SS	2/4* <sup>p</sup>	* <sup>p</sup> Bag lim.= 2 Ca & 1 Br. Pos lim.= 4 Ca & 2 Br.
			Dec 16-Jan 2	Oct 21-Jan 9			
	Wf	72	Sep 30-Dec 10	Sep 30-Dec 10	½ SR-SS	2/4	
	Sn/Ro	107	Sep 30-Jan 14, 2007		½ SR-SS	20/none	
	Sn/Ro	Cons. Or.	Jan 15-April 15, 2007		½ SR-SS/½	20/none	
2007	Ca	15	Sep 1-15 in metro zones <sup>d</sup>		½ SR-SS	5/10* <sup>q</sup>	* <sup>q</sup> Bag lim.= 5 Ca.
	Ca	2	Sep 8-9	Sep 8-9	½ SR-SS	2/4* <sup>i</sup>	
	Ca & Br	90	Sep 29-Dec 9	Sep 29-Oct 7	½ SR-SS	2/4* <sup>p</sup>	
			Dec 15-Jan 1	Oct 20-Jan 8			
	Wf	72	Sep 29-Dec 9	Sep 29-Dec 9	½ SR-SS	2/4	
	Sn/Ro	107	Sep 29-Jan 13, 2008		½ SR-SS	20/none	
	Sn/Ro	Cons. Or.	Jan 14-April 15, 2008		½ SR-SS/½	20/none	
2008	Ca	15	Sep 1-15 in metro zones <sup>e</sup>		½ SR-SS	5/10* <sup>q</sup>	
	Ca & Br	90	Sep 27-Oct 5	Sep 27-Oct 5	½ SR-SS	2/4* <sup>p</sup>	
			Oct 18-Dec 21	Oct 18-Dec 21			
			Dec 27-Jan 11	Dec 27-Jan 11			
	Wf	72	Sep 27-Dec 7	Sep 27-Dec 7	½ SR-SS	2/4	
	Sn/Ro	107	Sep 27-Jan 11, 2009		½ SR-SS	20/none	

Year	Goose Species	Season Length	Season Dates			Shooting Hours	Limit Bag/Poss	Additional Bag Limit Information
2009	Sn/Ro	°Cons. Or.	Jan 12-April 15, 2009			½ SR-SS/½	20/none	
			<b>North Zone (3)</b>	<b>South Zone (3)</b>				
	Ca	15	Sep 1-15 in metro zones <sup>e</sup>			½ SR-SS	5/10* <sup>q</sup>	
	Ca & Br	90	Sep 26-Oct 4	Sep 26-Oct 4		½ SR-SS	2/4* <sup>p</sup>	
			Oct 10-Dec 13	Oct 17-Dec 13				
			Dec 19-Jan 3	Dec 19-Jan 10				
	Wf	72	Sep 26-Dec 6	Sep 26-Dec 6		½ SR-SS	2/4	
Sn/Ro	107	Sep 26-Jan 10, 2010			½ SR-SS	20/none		
Sn/Ro	°Cons. Or.	Jan 11-April 15, 2010			½ SR-SS/½	20/none		
2010	Ca	9	Sep 4-12 in metro zones <sup>e</sup>			½ SR-SS	5/10* <sup>q</sup>	
	Ca & Br	98	Sep 25-Oct 10	Oct 2-Oct 17		½ SR-SS	2-3/4-6* <sup>r</sup>	* <sup>r</sup> Bag lim.= 2 Ca & 1 Br through Oct. 31 and 3 Ca & 1 Br thereafter.
			Oct 16-Jan 5	Oct 23-Jan 12				
	Wf	72	Sep 25-Dec 5	Oct 2-Dec 12		½ SR-SS	2/4	
	Sn/Ro	107	Sep 25-Jan 9	Oct 2-Jan 14		½ SR-SS	20/none	
	Sn/Ro	°Cons. Or.	Jan 15-April 15, 2011			½ SR-SS/½	20/none	
2011			<b>North Zone (4)</b>	<b>South Zone (4)</b>				
	Ca	9	Sep 3-11 in metro zones <sup>e</sup>			½ SR-SS	5/10 * <sup>q</sup>	
	Ca & Br	98	Sep 24-Oct 9	Oct 1-Oct 16		½ SR-SS	2-3/4-6* <sup>r</sup>	* <sup>r</sup> Bag lim.= 2 Ca & 1 Br through Oct. 31 and 3 Ca & 1 Br thereafter.
			Oct 15-Jan 4	Oct 22-Jan 11				
	Wf	74	Sep 24-Dec 6	Oct 1-Dec 13		½ SR-SS	2/4	
	Sn/Ro	107	Sep 24-Jan 8	Oct 1-Jan 13		½ SR-SS	20/none	
Sn/Ro	°Cons. Or.	Jan 14-April 15, 2012			½ SR-SS/½	20/none		
2012			<b>North Zone (5)</b>	<b>South Zone (5)</b>	<b>Missouri River (5)</b>			
	Ca	9	Sep 1-9 in metro zones <sup>e</sup>			½ SR-SS	5/10* <sup>q</sup>	
	Ca & Br	98	Sep 29-Dec 11	Oct 6-Jan 11	Oct 13-Jan 18	½ SR-SS	2-3/4-6* <sup>r</sup>	* <sup>r</sup> Bag lim.= 2 Ca & 1 Br through Oct. 31 and 3 Ca & 1 Br thereafter.
	Wf	74	Sep 29-Dec 11	Oct 6-Dec 18	Oct 13-Dec. 25	½ SR-SS	2/4	
	Sn/Ro	107	Sep 24-Jan 8	Oct 1-Jan 13	Oct 13-Jan 18	½ SR-SS	20/none	
Sn/Ro	°Cons. Or.	Jan 14-April 15, 2013			½ SR-SS	20/none		
2013	Ca	9	Sep 7-15 in metro zones <sup>e</sup>			½ SR-SS	5/15* <sup>q</sup>	
	Ca & Br	98	Sep 28-Jan 3,	Oct 5-Jan 10	Oct 12-Jan 17	½ SR-SS	2-3/6-9* <sup>r</sup>	* <sup>r</sup> Bag lim.= 2 Ca & 1 Br through Oct. 31 and 3 Ca & 1 Br thereafter.
	Wf	74	Sep 28-Dec 10	Oct 5-Dec 17	Oct 12-Dec. 24	½ SR-SS	2/6	



Year	Goose Species	Season Length	Season Dates			Shooting Hours	Limit Bag/Poss	Additional Bag Limit Information
	Sn/Ro	107	Sep 28-Jan 12	Oct 5-Jan 17	Oct 12-Jan 17	½ SR-SS	20/none	
	Sn/Ro	ᶜCons. Or.	Jan 18-April 15, 2014			½ SR-SS	20/none	
2014	Ca	9	Sep 6-14 in metro zones <sup>e</sup>			½ SR-SS	5/15* <sup>q</sup>	
	Ca & Br	98	Sep 27-Jan 2,	Oct 4-Jan 9	Oct 11-Jan 16	½ SR-SS	2-3/6-9* <sup>r</sup>	* <sup>r</sup> Bag lim.= 2 Ca & 1 Br through Oct. 31 and 3 Ca & 1 Br thereafter.
	Wf	74	Sep 27-Dec 9	Oct 4-Dec 16	Oct 11-Dec. 23	½ SR-SS	2/6	
	Sn/Ro	107	Sep 27-Jan 11	Oct 4-Jan 16	Oct 11-Jan 16	½ SR-SS	20/none	
	Sn/Ro	ᶜCons. Or.	Jan 17-April 15, 2015			½ SR-SS	20/none	
Ca	9	Sep 5-13 in metro zones <sup>e</sup>			½ SR-SS	5/15* <sup>q</sup>		
2015	Ca & Br	98	Sep 26-Jan 1	Oct 3-Jan 8	Oct 10-Jan 15	½ SR-SS	2-3/6-9* <sup>r</sup>	* <sup>r</sup> Bag lim.= 2 Ca & 1 Br through Oct. 31 and 3 Ca & 1 Br thereafter.
	Wf	74	Sep 26-Jan 1	Oct 3-Jan 8	Oct 10-Jan 15	½ SR-SS	5/15* <sup>**</sup>	
	Sn/Ro	107	Sep 26-Jan 10	Oct 3-Jan 15	Oct 3-Jan 15	½ SR-SS	20/none	
	Sn/Ro	ᶜCons. Or.	Jan 16-April 15, 2016			½ SR-SS	20/none	
	Ca	9	Sep 3-11 in metro zones <sup>e</sup>			½ SR-SS	5/15* <sup>q</sup>	
2016	Dark Geese	98	Sep 24-Oct 9	Oct 1-9	Oct 8-16	½ SR-SS	5/15* <sup>r</sup>	* <sup>r</sup> Aggregate bag lim.= 2 Ca through Oct. 31 and 3 Ca, 5 Wf, & 1 Br thereafter.
			Oct 15-Jan 4	Oct 22-Jan 18	Oct 22-Jan 18	½ SR-SS		
	Sn/Ro	107	Sep 24-Oct 9	Oct 1-9	Oct 8-16	½ SR-SS	20/none	
			Oct 15-Jan 13	Oct 22-Jan 27	Oct 22-Jan 27	½ SR-SS	20/none	
	Sn/Ro	ᶜCons. Or.	Jan 28-April 15, 2017			½ SR-SS	20/none	
2017	Ca	9	Sep 2-10 in metro zones <sup>e</sup>			½ SR-SS	5/15* <sup>q</sup>	
	Dark Geese	98	Sep 23-Oct 8	Sep 30-8		½ SR-SS	5/15* <sup>r</sup>	* <sup>r</sup> Aggregate bag lim.= 2 Ca through Oct. 31 and 3 Ca, 5 Wf, & 1 Br thereafter.
			Oct 14-Jan 1	Oct 21-Jan 15		½ SR-SS		
	Sn/Ro	107	Sep 23-Oct 8	Sep 30 1-8		½ SR-SS	20/none	
			Oct 14-Jan 10	Oct 21-Jan 24		½ SR-SS	20/none	
Sn/Ro	ᶜCons. Or.	Jan 25-April 15, 2018			½ SR-SS	20/none		
2018	Ca	9	Sep 1-9 in metro zones <sup>e</sup>			½ SR-SS	5/15* <sup>q</sup>	
	Dark Geese	98	Sep 22-Oct 7	Sep 29-Oct 14		½ SR-SS	5/15* <sup>r</sup>	* <sup>r</sup> Aggregate bag lim.= 2 Ca through Oct. 31 and 3 Ca, 5 Wf, & 1 Br thereafter.
	Sn/Ro		Oct 13-Dec 4	Oct 20-Dec 11		½ SR-SS	20/none	
			Dec 15-Jan 12	Dec 22-Jan 19		½ SR-SS	20/none	
	Sn/Ro	ᶜCons. Or.	Jan 27-April 15, 2019			½ SR-SS	20/none	
2019	Ca	9	Sep 7-15 in metro zones <sup>e</sup>			½ SR-SS	5/15* <sup>q</sup>	
	Dark Geese	98	Sep 21-Oct 6	Sep 28-Oct 13		½ SR-SS	5/15* <sup>r</sup>	

Year	Goose Species	Season Length	Season Dates			Shooting Hours	Limit Bag/Poss	Additional Bag Limit Information
	Sn/Ro		Oct 12-Dec 3	Oct 19-Dec 10		½ SR-SS	20/none	*rAggregate bag lim.= 2 Ca through Oct. 31 and 3 Ca, 5 Wf, & 1 Br thereafter.
			Dec 14-Jan 11	Dec 21-Jan 18		½ SR-SS	20/none	
	Sn/Ro	<sup>c</sup> Cons. Or.	Jan 26-April 15, 2020			½ SR-SS	20/none	
2020	Ca	9	Sep 5-13 in metro zones <sup>e</sup>			½ SR-SS	5/15* <sup>q</sup>	
	Dark Geese	98	Sep 19-Oct 4	Sep 26-Oct 11	Oct 3-18	½ SR-SS	5/15* <sup>r</sup>	*rAggregate bag lim.= 2 Ca through Oct. 31 and 3 Ca, 5 Wf, & 1 Br thereafter.
	Sn/Ro		Oct 10-Dec 1	Oct 17-Dec 8	Oct 24-Dec 15	½ SR-SS	20/none	
			Dec 12-Jan 9	Dec 19-Jan 16	Dec 26-Jan 23	½ SR-SS	20/none	
	Sn/Ro	<sup>c</sup> Cons. Or.	Jan 26-May 1, 2021			½ SR-SS	20/none	
2021	Ca	9	Sep 4-12 in metro zones <sup>e</sup>			½ SR-SS	5/15* <sup>q</sup>	
	Dark Geese	98	Sep 25-Oct 10	Oct 2-17	Oct 9-24	½ SR-SS	5/15* <sup>r</sup>	*rAggregate bag lim.= 2 Ca through Oct. 31 and 3 Ca, 5 Wf, & 1 Br thereafter.
	Sn/Ro		Oct 16-Dec 7	Oct 23-Dec 14	Oct 30-Dec 21	½ SR-SS	20/none	
			Dec 11-Jan 8	Dec 18-Jan 15	Dec 25-Jan 22	½ SR-SS	20/none	
	Sn/Ro	<sup>c</sup> Cons. Or.	Jan 23-May 1, 2022			½ SR-SS	20/none	
2022	Ca	<sup>9</sup>	Sep 10-18 in metro zones <sup>e</sup>			½ SR-SS	5/15* <sup>q</sup>	
	Dark Geese	98	Sep 24-Oct 9	Oct 1-16	Oct 8-23	½ SR-SS	5/15* <sup>r</sup>	*rAggregate bag lim.= 2 Ca & 1 Br through Oct. 31 and 3 Ca, 5 Wf, & 1 Br thereafter.
	Sn/Ro		Oct 15-Dec 6	Oct 22-Dec 13	Oct 29-Dec 20	½ SR-SS	20/none	
			Dec 10-Jan 7	Dec 17-Jan 14	Dec 24-Jan 21	½ SR-SS	20/none	
	Sn/Ro	<sup>c</sup> Cons. Or.	Jan 22-May 1, 2022			½ SR-SS	20/none	

**GOOSE SPECIES:** Ca = Canada goose, Sn = Snow goose, Wf = White-fronted goose, Br = Brant, Ro = Ross's goose

**SEASON LENGTH:** Maximum number of days the season could be open.

**SHOOTING HOURS:** SR-SS = sunrise to sunset, ½ SR-SS = ½ hour before sunrise to sunset, ½ SR-½ SS= ½ hour before sunrise to ½ hour before sunset, ½ SR-1 SS = ½ hour before sunrise to 1 hour before sunset. ½ SR to SS/1 = ½ hour before sunrise to sunset in all of state except SW Zone where shooting hours were ½ hour before sunrise to 1pm until Dec. 1 in 1991 and until Nov. 29 in 1992, then ½ hour before sunrise to sunset thereafter. ½ SR-SS ½ = ½ hour before sunrise to ½ hour after sunset.

**LIMIT: BAG** = Daily bag limit, **POSS** = Possession limit

**SW ZONE(1)** = that portion of the state south and west of a line running from the Iowa-Missouri state line along US Hwy 71 to St Hwy 92 and west on Hwy 92 to the Nebraska-Iowa border.

**SW ZONE(2)** = that portion of the state south and west of a line running from the Iowa-Missouri state line along US Hwy 71 to I-80, west on I-80 to US Hwy 59, north on US Hwy 59 to St Hwy 37, then NW on Hwy 37 to St Hwy 175, and west on Hwy 175 to the Nebraska-Iowa border.

**GOOSE ZONE BOUNDARY (1)** = a line running from the Nebraska-Iowa border along St Hwy 175, southeast to St Hwy 37, east to US Hwy 59, south to I-80, and along I-80 to the Iowa-Illinois border. This was the same boundary used to divide the north and south duck zones during 1993-2003.

**GOOSE ZONE BOUNDARY (2)** = a line running from the Nebraska-Iowa border along St Hwy 20. This change was made in the 2004 season and was maintained through the 2008 season.

**GOOSE ZONE BOUNDARY (3)** = a line running from the Nebraska-Iowa border along St Hwy 175, east to St Hwy 37, southeast to St Hwy 183, northeast to St Hwy 141, east to US Hwy 30, and along US Hwy 30 to the Iowa-Illinois border. The duck and goose zone boundaries were identical from 1993-2003. The goose zone boundary was moved to Hwy 20 from 2004-2008. In 2009, the goose zone boundary was changed to match the duck zone boundary, i.e., along Hwy 30.

**GOOSE ZONE BOUNDARY (4)** = a line beginning on the South Dakota-Iowa border at Interstate 29, southeast to Woodbury Co Rd D38, east to Woodbury Co Rd K45, southeast to St Hwy 175, east to St Hwy 37, southeast to St Hwy 183, northeast to St Hwy 141, east to US Hwy 30, and along US Hwy 30 to the Iowa-Illinois border.

**GOOSE ZONE BOUNDARY (5)** = The North Zone is all of Iowa north of a line beginning on the on the South Dakota-Iowa border at I-29, southeast to St Hwy 175, east to St Hwy 37, southeast to St Hwy 183, northeast to St Hwy 141, east to US Hwy 30, and along US 30 to the Iowa-Illinois border. The Missouri River Zone includes all lands and water in Iowa west of I-29 and north of Hwy 175. The South Zone is the remainder of the state not in the North or Missouri River Zones.

(\*SH) Steel shot required statewide for hunting all migratory gamebirds except woodcock. See Iowa's Duck and Coot Seasons for a complete history of steel shot regulations in Iowa.

(\*HIP) First year migratory bird hunters in Iowa registered (by phone) for the federal Harvest Information Program (HIP).

**SPECIAL REGULATIONS:** Ross's goose season was closed by Federal regulation from 1942-61.

<sup>a</sup>The daily limit was 2 Canada geese through Oct. 31 and 1 thereafter except in the south zone where it was 2 after Nov. 30.

<sup>b</sup>The special 2-day September Canada goose season was only open in the north zone west of Hwy 63.

<sup>c</sup>A conservation order was issued by the USFWS to permit the taking of light geese (snow + ross) after the regular season, including after March 10, the last day regular waterfowl seasons can be open. Hunters could use electronic calls and unplugged shotguns and hunt until ½ hour after sunset. Hunters had to be fully licensed to hunt waterfowl in Iowa (no Fed. Mig. Bird stamp) and registered with HIP.

<sup>d</sup>This special September Canada goose season was only open in the Des Moines and Cedar Rapids/Iowa City zones.

<sup>e</sup>This special September Canada goose season was only open in the Des Moines, Cedar Rapids/Iowa City and Cedar Falls/Waterloo zones.

**Table 4.5 Waterfowl banded in Iowa. (Numbers include both state and federal bandings.)**

Year	Canada Geese	Mallards	Wood Ducks	Blue-winged Teal	Trumpeter Swans	Other Waterfowl Species	Total Waterfowl	Mourning Doves
1964	51	440	488	6,046		273	7,298	0
1965	32	533	571	4,485		120	5,741	0
1966	61	504	564	3,836		172	5,137	0
1967	66	1,928	410	4,022		113	6,539	0
1968	91	1,809	315	3,716		63	5,994	0
1969	53	2,282	414	1,634		135	4,518	0
1970	143	2,368	935	2,649		236	6,331	0
1971	301	1,901	1,644	1,395		330	5,571	0
1972	148	672	1,381	1,000		127	3,328	0
1973	410	1,022	1,665	601		115	3,813	0
1974	268	522	1,333	638		34	2,795	0
1975	222	563	2,026	248		164	3,223	0
1976	544	3,165	1,620	334		19	5,682	0
1977	799	678	1,261	223		25	2,986	0
1978	633	4,418	1,765	1,022		98	7,936	0
1979	409	4,683	1,490	509		3	7,094	0
1980	775	2,175	1,302	1,880		85	6,217	0
1981	736	350	1,523	919		86	3,614	0
1982	975	99	2,747	26		1	3,848	0
1983	1,444	446	2,411	35		3	4,339	0
1984	1,293	110	2,489	38		6	3,936	0
1985	1,710	389	1,953	30		1	4,083	0
1986	1,847	383	2,623	18		3	4,874	0
1987	2,127	380	2,199	98		8	4,812	0
1988	2,421	349	2,115	37		2	4,924	0
1989	1,712	70	2,636	0		0	4,418	0
1990	1,556	13	1,908	64		0	3,541	0
1991	1,880	151	4,874	0		0	6,905	0
1992	2,043	392	3,776	0		13	6,224	0
1993	2,538	130	2,931	0		1	5,600	0
1994	3,737	146	3,631	0		0	7,514	0
1995	3,671	221	6,717	0		0	10,609	0
1996	3,809	263	4,188	0		0	8,260	0
1997	4,852	77	4,375	0		0	9,304	0
1998	4,462	292	4,837	0	58	0	9,649	0
1999	6,073	229	4,669	0	46	0	11,017	0
2000	2,971	133	2,380	0	90	0	5,574	0
2001	2,942	60	3,711	0	78	0	6,791	0
2002	3,479	338	3,146	207	68	0	7,238	0
2003	4,066	259	4,048	0	87	0	8,460	1987
2004	3,338	143	4,769	0	91	0	8,341	2326
2005	4,983	338	2,823	0	113	0	8,257	2079
2006	4,203	210	2,729	0	78	0	7,220	1000
2007	4,283	231	2,321	0	73	0	6,908	986

Year	Canada Geese	Mallards	Wood Ducks	Blue-winged Teal	Trumpeter Swans	Other Waterfowl Species	Total Waterfowl	Mourning Doves
2008	3,288	157	2,402	100	69	0	6,016	1,699
2009	3,593	31	2,552	0	81	0	6,257	1,266
2010	3,568	8	2,770	0	69	0	6,415	1,084
2011	3,765	40	2,252	0	51	0	6,108	2,227
2012	3,586	254	2,917	0	20	0	6,777	2,205
2013	3,483	16	3,355	0	20	0	6,874	2,080
2014	3,464	293	2,093	0	18	0	5,868	1,976
2015	3,421	34	3,301	0	18	0	6,774	1,929
2016	3,945	51	2,096	0	5	0	6,097	1,914
2017	4,310	0	1,633	0	0	0	5,943	2,212
2018	4,374	0	1,204	0	0	0	5,578	1,882
2019	4,110	0	2,199	0	0	0	6,309	2,025
2020	3,665	0	2,350	0	51	0	6,066	2,001
2021	4,462	0	1,381	0	22	0	5,865	1,902
2022	3,921	0	2,779	0	0	0	6,700	2,142
Totals	141,112	36,749	142,997	35,810	1,206	2,236	360,110	36,922
Recent 10-year								
Avg	3,784	66	2,397	0	26	0	6,273	1,891