

SOURCE WATER PROTECTION PROGRAM

- WHERE ARE WE AT ?
- WHERE ARE WE GOING ?
- HOW WILL WE GET THERE ?

1

WHERE ARE WE AT ?

- SWP PROGRAM INTO WATERSHED IMPROVEMENT SECTION (WIS) JULY 1, 2007.
- WIS INCLUDES: 319 NPS PROGRAM, TMDL PROGRAM, AND WATERSHED GIS MAPPING PROGRAM. ALL ARE VOLUNTARY PROGRAMS INCLUDING SWP PROGRAM.
- CURRENTLY WORKING WITH EPA TO 'REVISE' THE SWP PROGRAM TO MAKE ENVIRONMENTAL IMPACTS WHILE MEETING EPA REQUIREMENTS.
- ALL PHASE I SWP REPORTS COMPLETED BY DNR GEOLOGICAL SURVEY – UPDATED DATA IS MAINTAINED FOR SWP REPORTS AND SANITARY SURVEY

2

WHERE ARE WE AT ?

- IN SFY 2007:
 - TAC ORGANIZED TO PROVIDE TECHNICAL SWP PROGRAM GUIDANCE.
 - DNR SWP PROGRAM DEVELOPED A SWP DB THAT INTER-CONNECTS ALL DNR SECTORS TO BETTER COMMUNICATE SWP PLANNING AND IMPLEMENTATION.

3

WHERE ARE WE AT ?

TAC PROVIDED:

- ANALYZING OVER 1,000 CWS's DATA TO DETERMINE "AT RISK" PRIORITY CWS's. DNR, ESD Field Offices, CSS, JUST & JUST SECTIONS, WIS, & GEO SURVEY PROVIDED EXPERTISE FOR THIS ANALYSIS.
- ASSESSED PAST & PRESENT OVERALL SWP PROGRAM.
- REVIEW OF SWP PLANS

4

WHERE ARE WE AT ?

- ASSESSED NEED FOR IMPROVING SWP PLANS
 - FUTURE SWP PLANNING WILL INCLUDE: stakeholders involvement, in-depth assessment of the contaminant source, i.d. solutions, assess resources and adequate implementation and follow-up.
 - THE IDNR SS's PROVIDE A LEVEL OF SWP FOLLOW-UP.
- EVALUATED CRP WELLHEAD PROTECTION PROGRAM
 - CRP WELLHEAD PROTECTION – LESS THAN 3% OF ELIGIBLE ACRES ARE ENROLLED (approx. 300,000 eligible acres with 7,700 enrolled, by USDA-FSA records)

6

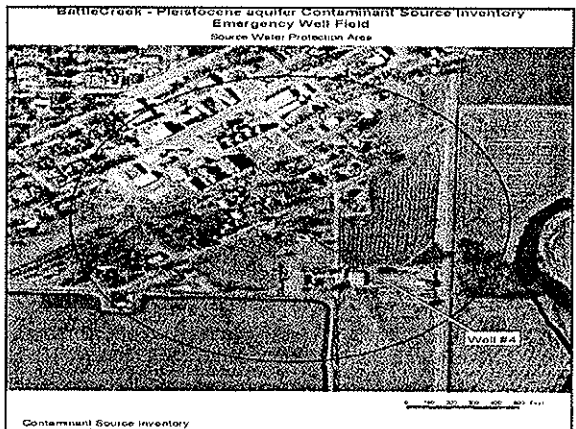
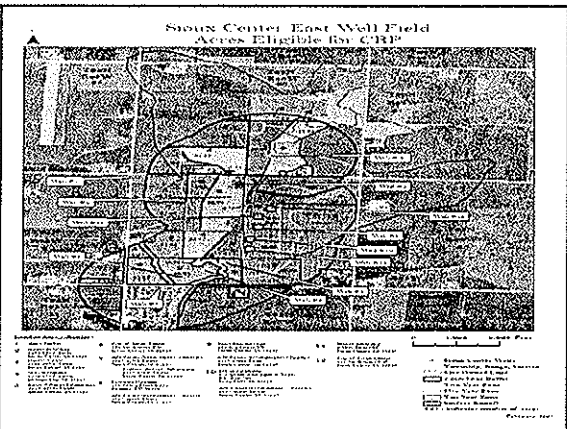
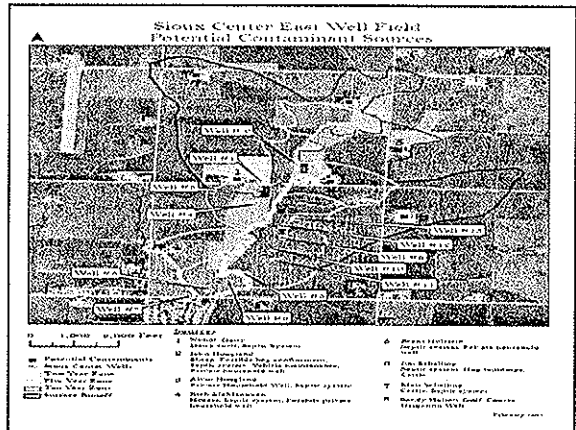
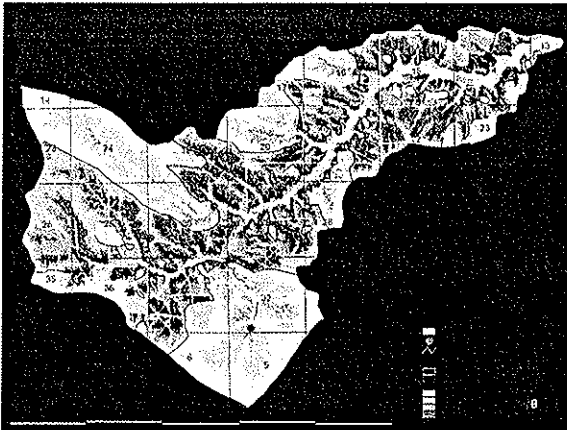
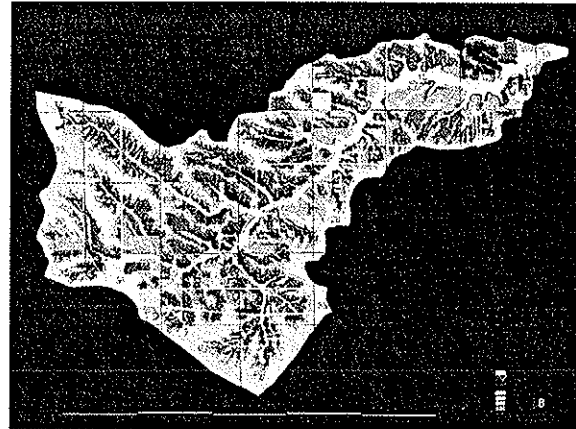
WHERE ARE WE GOING ?

- SUSTAINABLE ENVIRONMENTAL IMPACTS/IMPROVEMENTS FOR CWS's.
- PREVENTING CONTAMINANT RELEASES IN SWP AREAS.
- DECREASE COSTS TO CWS's.
- ASSIST CWS's IN THEIR GOAL TO PROVIDE QUALITY WATER TO THEIR COMMUNITY.

6

HOW WILL WE GET THERE ?

- UTILIZE A WATERSHED APPROACH IN SWP ASSESSMENTS, PLANNING AND IMPLEMENTATION.
- UTILIZE TECHNOLOGY



HOW WILL WE GET THERE?

- **CURRENT IDNR PARTNERSHIPS:** SWCD, IDALS-DSC, NRCS, FSA, RC&D, USGS, EPA, etc...
- **ADDITIONAL PARTNERS NOW IN SWP ARENA:** COUNTY FARM BUREAU, COUNTY SANITARIAN, CCB, DED, etc..

13

HOW WILL WE GET THERE ?

- **ADVANCED SWP ASSESSMENTS** (i.e. water monitoring, in-depth groundwater investigations in capture zones, etc.).
- **TECHNICAL ASSISTANCE AVAILABLE:** IDNR resources in CS section, UST section, GIS section, WIS section, GS section, Water Monitoring section, DNR field offices, IDNR Con & Rec, etc.).
- **LOCATING RESOURCES TO FUND THE PROGRAM.**

14

HOW WILL WE GET THERE?

- **ADDRESSING CWS's AT GREATEST RISK.**
- **DEV. A USER FRIENDLY SWP PLAN** (include a 2 pg work plan to augment GIS maps).
- **GIS MAP FOR PLANNING PURPOSES** (2'x3' GIS SWP maps).
- **SWP PLANS LESS THAN 20 PAGES** (Clear & Concise)

15

HOW WILL WE GET THERE?

- **CREATING A STRUCTURE IN THE COMMUNITY TO CONTINUE THE SWP PLANNING ONCE THE ADVANCED ASSESSMENTS ARE CONDUCTED.**
- **INCORPORATING ALL STAKEHOLDERS INTO PLANNING AND IMPLEMENTATION PROCESS.**
- **BY BRINGING SWP PLANNING INTO THE 21ST CENTURY** (i.e. e-copies, GIS mapping, advancements in technology, etc.).
- **CREATING A USER FRIENDLY SWP PLAN THAT THE CWS's MAINTAIN.**

16

EXAMPLES OF WHAT WORKS:

- **THOROUGH DNR ASSESSMENTS** (i.e. Remsen, Battle Creek, St. Ansgar, Waverly in 2007, Sioux Center) in water monitoring, stakeholder involvement, ESD F.O. knowledge, SWCD & NRCS knowledge, DNR geologists' regional knowledge & vast experience, etc.).
- **Partners/Stakeholders involved who are anxious to prevent further risk to their drinking water...I&E**

17

IMPEDIMENTS

- **LIMITED TIME & RESOURCES TO ADEQUATELY IMPLEMENT SWP PROGRAM IN A TIMELY MANNER....TO CONDUCT THE PROGRAM EFFECTIVELY – IT WILL TAKE RESOURCES AND TIME.**
- **LACK OF SWP AWARENESS – I & E NEEDED.**

18

INTEGRATING THE SWP PROGRAM INTO
PERFORMANCE BASED WS MANAGEMENT

- EPA REQUIRED SWP MEASURES ARE
MOVING THE SWP PROGRAM IN THIS
DIRECTION THROUGH THE
WATERSHED APPROACH.

19

20