

District Forester
621 Beck St.
Charles City, IA 50616
641/228-6611

August 3, 2006

Gentlemen:

Enclosed is a "Notice of Timber for Sale" for 391 trees owned by Iowa Department of Natural Resources. The trees contain an estimated 42,120 board feet, Scribner tree scale.

The trees are located west of Ridgeway, Iowa. The location of the timber is outlined on the attached aerial photo.

The trees to be sold are marked with **blue** paint. The walnut trees are numbered 1-97 and their approximate locations are marked on the map. The walnut are 90-95% lumber quality. The remaining trees are marked with a band of blue paint. The "cull" trees are marked with an "X". The trees will be sold on a lump sum, sealed bid sale. ***The successful bidder will pay the full amount in advance of cutting and within 10 days after the bid is accepted.*** The successful bidder will also enter into a timber contract with the State of Iowa within 10 days of the bid acceptance. The buyer will have 18 months from the date of the contract to remove the trees. The ground must be dry or frozen during the logging operation. The sale does include the rights to all tops.

No harvesting or logging activity will be allowed from December 1 through December 17th due to the shotgun deer season. Also, no logging is allowed from April 1st through August 31st.

After the bids are opened, the sale must be approved by the Natural Resources Commission. Approval can take 2-3 weeks. The high bidder will be notified after the bid is accepted and arrangements will be made for the signing of the contract and full payment for the trees.

Anyone working on State Land must have proof of liability insurance. Upon signing of the contract, you will be required to provide proof of insurance. The minimum coverage required to work on State Land is –

Bodily Injury - \$100,000 per person, \$300,000 per accident.
Property Damage - \$50,000 per accident, \$100,000 aggregate.

All bids must be submitted in writing and sealed in an envelope to Gary Beyer, District Forester, 621 Beck St., Charles City, Iowa 50616. The words "Timber Bid" must be written on the envelope so it isn't opened by mistake. The bids will be opened at my office in Charles City at **1:00 p.m., Friday, September 15, 2006**. All bids must be received prior to this time. No late bids or telephone bids will be accepted.

Please feel free to contact me if you have any questions.

Respectfully,

Gary Beyer, District Forester
621 Beck St.
Charles City, IA 50616
641/228-6611

NOTICE OF TIMBER FOR SALE

NAME OF SELLER: Iowa Department of Natural Resources
Gary Beyer, District Forester

ADDRESS: 621 Beck St.
Charles City, Iowa 50616

TELEPHONE: 641/228-6611

LOCATION: Sec. 6 Lincoln Twsp., T98N-R10W, Winneshiek County
3 ½ miles northwest of Ridgeway, Iowa

TREES ARE MARKED WITH BLUE PAINT.

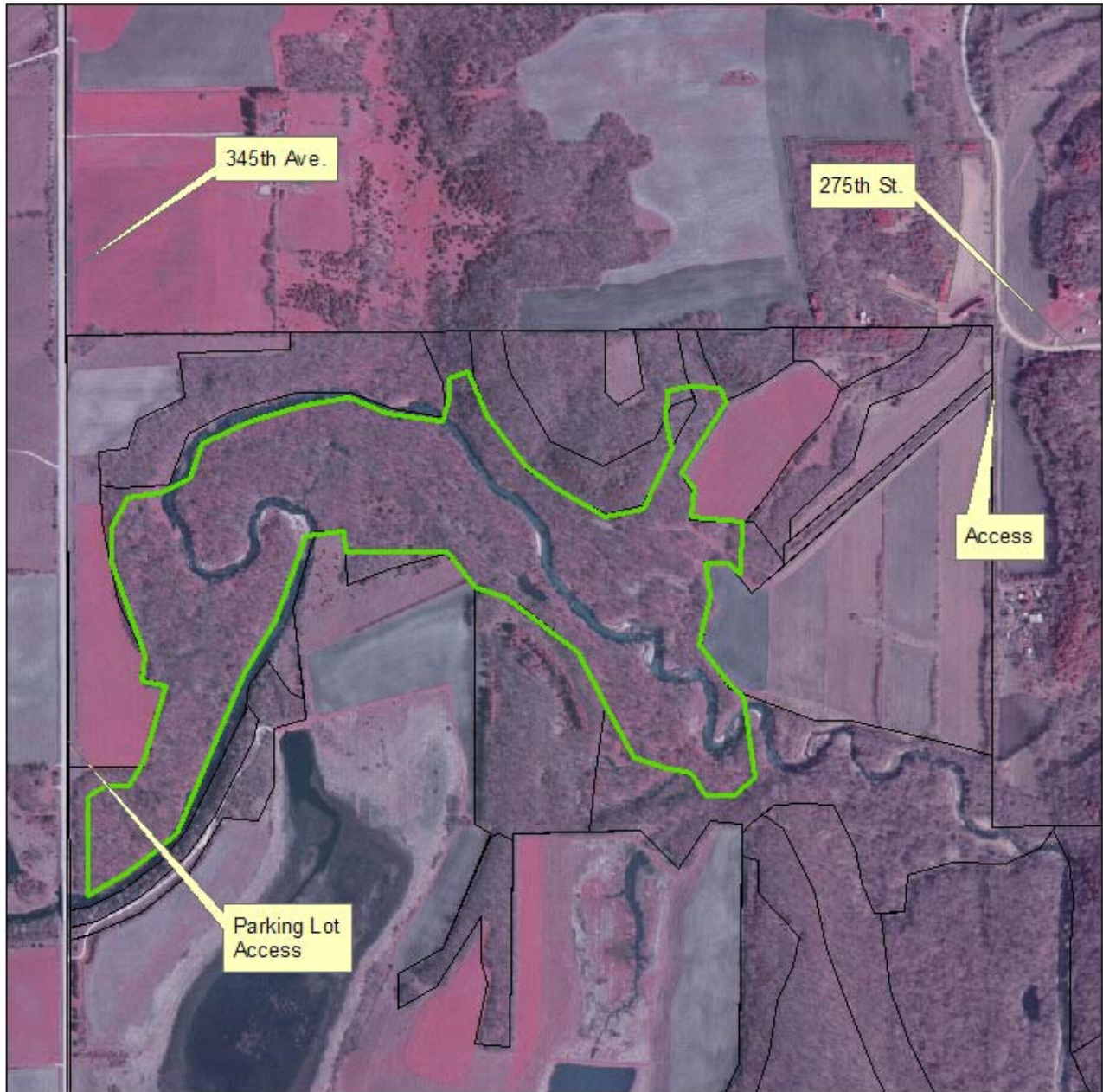
NUMBER OF TREES MARKED: 391

ESTIMATED BOARD FEET: 42,120
(Scribner Tree Scale)

SPECIES	# OF TREES	AV. BD. FT./TREE	EST. BD. FT.
Bur Oak	4	130	520
White Elm	30	113	3,400
Red Elm	9	126	1,130
Basswood	40	133	5,310
Ash	79	150	11,880
Black Cherry	1	140	140
Hackberry	21	157	3,290
Cottonwood	3	173	520
Soft Maple	36	136	4,880
Walnut	97	114	11,050
Culls	71		
Totals	391		42,120

The volume in board feet is an estimate only and bidders/buyers should satisfy themselves by examination as to the quantity and quality of the timber offered. The seller reserves the right to reject any or all offers.

**TIMBER SALE ON CARDINAL MARSH WILDLIFE AREA
391 TREES, 42,120 BD. FT.
92 AC. - MARKED WITH BLUE PAINT**



Sec. 6 Lincoln Twsp.,
T98N-R10W, Winneshiek Co.

