



AIR QUALITY BUREAU
ATTN: Application Log in
7900 Hickman Rd., Suite 1
Windsor Heights, IA 50324

AIR CONSTRUCTION PERMIT APPLICATION

NON-PSD MODELING DETERMINATION – FORM MD

Company Name:

Facility ID:

DISPERSION MODELING DETERMINATION

Completion of Form MD is intended to assist applicants in determining whether or not point source emissions associated with non-PSD construction permit projects will require an air dispersion modeling analysis. Modeling requirements for non-point source emissions will be determined on a case-by-case basis. This procedure is used for both new construction permit projects and for modifications to previous projects, but does not apply to emissions from VOC-only sources.

This form reflects the Air Dispersion Modeling Applicability Procedure found in the DNR "Air Dispersion Modeling Guidelines for Non-PSD Pre-Construction Permit Applications". A flow chart of the Air Dispersion Modeling Applicability Procedure is on the back of this form. As you go through the flowchart identify the flow of this project for each emission point being permitted or re-permitted. Please check the appropriate box below depending on whether the flow chart indicates that dispersion modeling is required or not.

Note: ALL projects must include a site plan; see Form MI-1 instructions.

DISPERSION MODELING ANALYSIS IS NOT REQUIRED

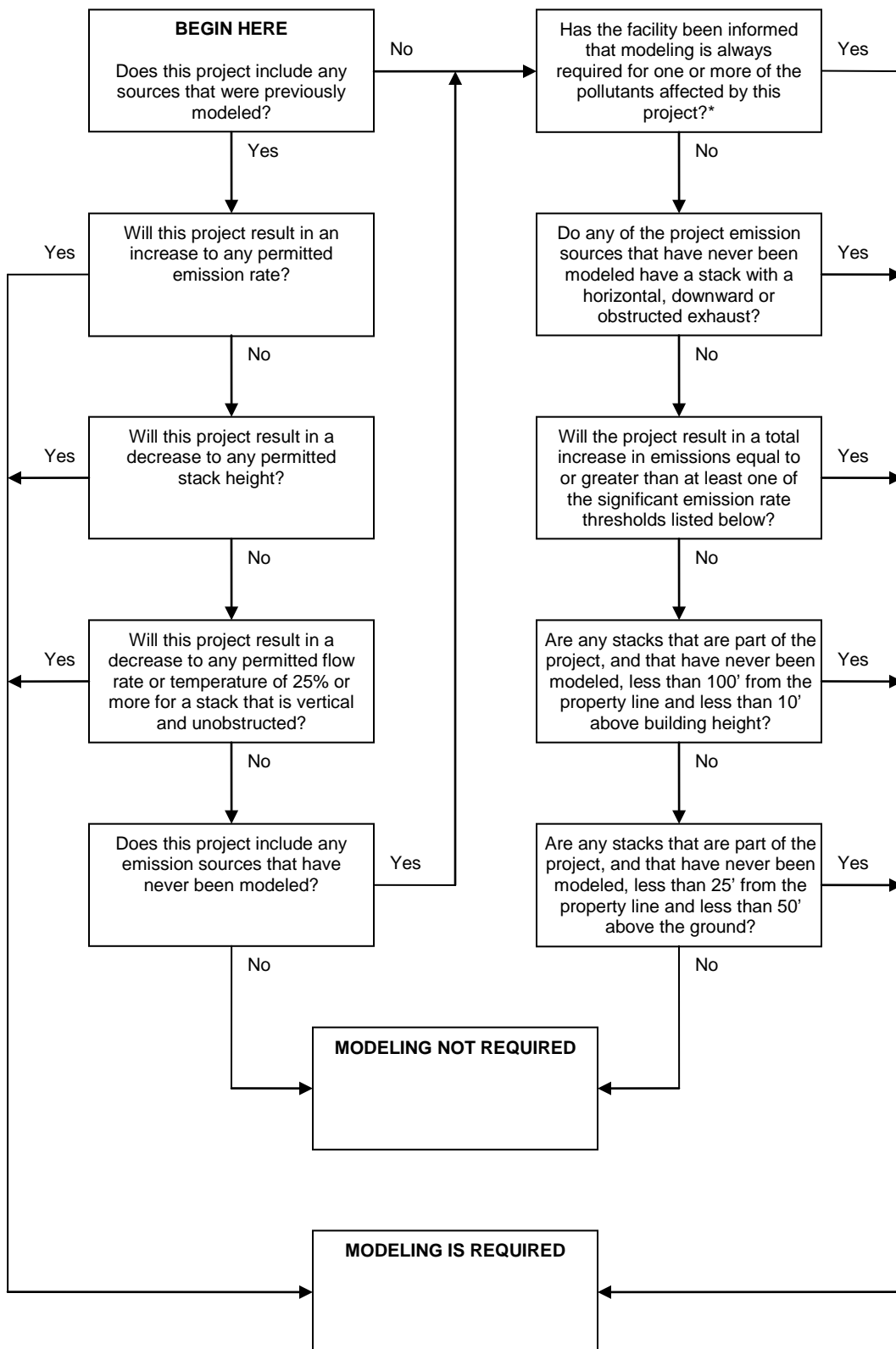
Since the point source emissions in this application meet the criteria currently listed in the Air Dispersion Modeling Applicability Procedure, it is likely that modeling is not required.

There are unique circumstances that the Air Dispersion Modeling Applicability Procedure does not address that may trigger a modeling review. Recommendations for modeling reviews that fall outside of the Air Dispersion Modeling Applicability Procedure will be reviewed by DNR management.

DISPERSION MODELING ANALYSIS IS REQUIRED

When dispersion modeling is required, the modeling analysis is either conducted by the DNR or is submitted by the applicant for DNR review as noted below:

- All applicants have the option to prepare and submit a complete dispersion modeling analysis per DNR's "Air Dispersion Modeling Guidelines for Non-PSD Pre-Construction Permit Applications" and the "Dispersion Modeling Checklist for Non-PSD Projects".
- For major sources as defined in 567 IAC 22.100 that have previously been modeled, the DNR will conduct the modeling analysis if resources allow. Applicants with extensive changes to their facility may expedite the modeling review by submitting their own modeling analysis.
- For major sources that have not previously been modeled, the applicant must prepare and submit the dispersion modeling analysis.
- For non-major sources (minor), the DNR will conduct the initial dispersion modeling as a service to minor source when a modeling analysis has not been submitted by the applicant.



Significant Emission Rate Thresholds

PM ₁₀	3.29 lb/hr
SO ₂	9.00 lb/hr
CO	22.69 lb/hr
NO _x	39.40 ton/yr