

Adding the Iowa Habitat and Access Program (IHAP) Tracts to Garmin GPS Units

The '2011_ihap.img' file available for download from the DNR website contains the boundaries of IHAP tracts. For 2011, this is 10 tracts totaling 1,366 acres in 9 counties. The tracts will show up as a solid orange color on units with a color display and grey on black and white displays. When you hover over an area, the tract ID and a likely species list will display.

These boundaries can be added to the following supported Garmin GPS units:

GARMIN UNITS THAT ARE COMPATIBLE

Units need USB or serial cable to connect to computer for file transfer

[Garmin ® Nuvifone M20™](#)

[Garmin ® Mobile XT™](#)

[Garmin ® Aera™](#)

[Garmin ® Oregon™](#)

[Garmin ® Dakota™](#)

[Garmin ® Colorado™](#)

[Garmin ® Montana™](#)

[Garmin ® Astro™](#)

[Garmin ® Nuvi and Zumo \(all models\)™](#)

[Garmin ® Edge 605, 705, 800™](#)

[Garmin ® iQue M3, M4, M5™](#)

[Garmin ® eTrex Summit HC™](#)

[Garmin ® eTrex Venture Cx, HC™](#)

[Garmin ® eTrex Legend C, Cx, HCx™](#)

[Garmin ® eTrex Vista, C, Cx, HCx™](#)

[Garmin ® Rino 120, 130, 520, 530, 520HCx, 530HCx™](#)

[Garmin ® GPS V™](#)

[Garmin ® GPSMAP 60C, 60CS, 60Cx, 60CSx, 62, 62s, 62st™](#)

[Garmin ® GPSMAP 76, 76S, 76C, 76CS, 76Cx, 76CSx, 78, 78s, 78sc™](#)

[Garmin ® GPSMAP 176, 176C, 276C, 376C, 378, 478C™](#)

[Garmin ® GPSMAP 96, 96C, 196, 296, 396, 496™](#)

[Garmin ® GPSMAP 620 - only routing maps in automotive mode™](#)

[Garmin ® Quest, Quest 2™](#)

[Garmin ® Street Pilot i2, i3, i5™](#)

[Garmin ® Street Pilot c320, c330, c340™](#)

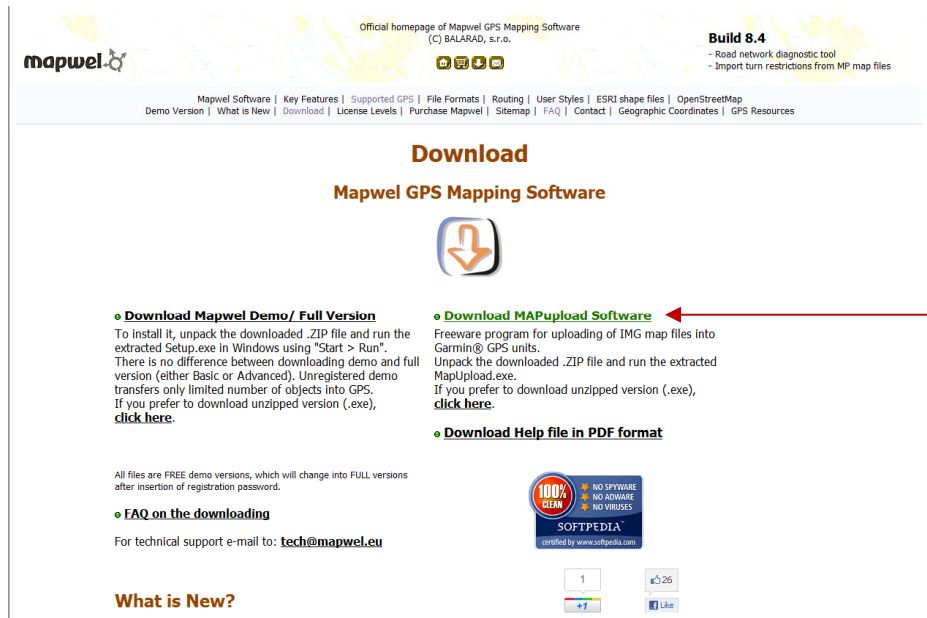
[Garmin ® Street Pilot c530, c550, 580™](#)

[Garmin ® Street Pilot 2610, 2620, 2650, 2660™](#)

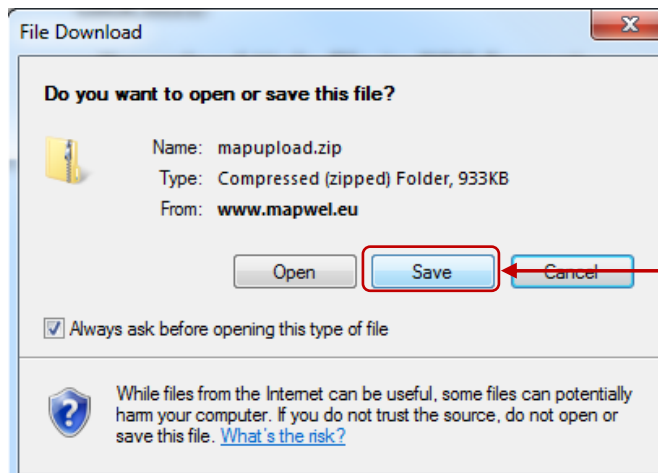
Click on the 'IHAP 2011 Tract Boundaries - GPS File' link and save the '2011_ihap_imp.zip' file to your computer, making sure to remember where you download the file so you can locate it later.

After the '2011_ihap_img.zip' file is downloaded, you will need to navigate to where you saved it to and extract the file.

Next you will need to install the MAPUpload software on your computer. Click on the MAPUpload Software Download link to access the Mapwel web page.



Click on Download MAPUpload Software

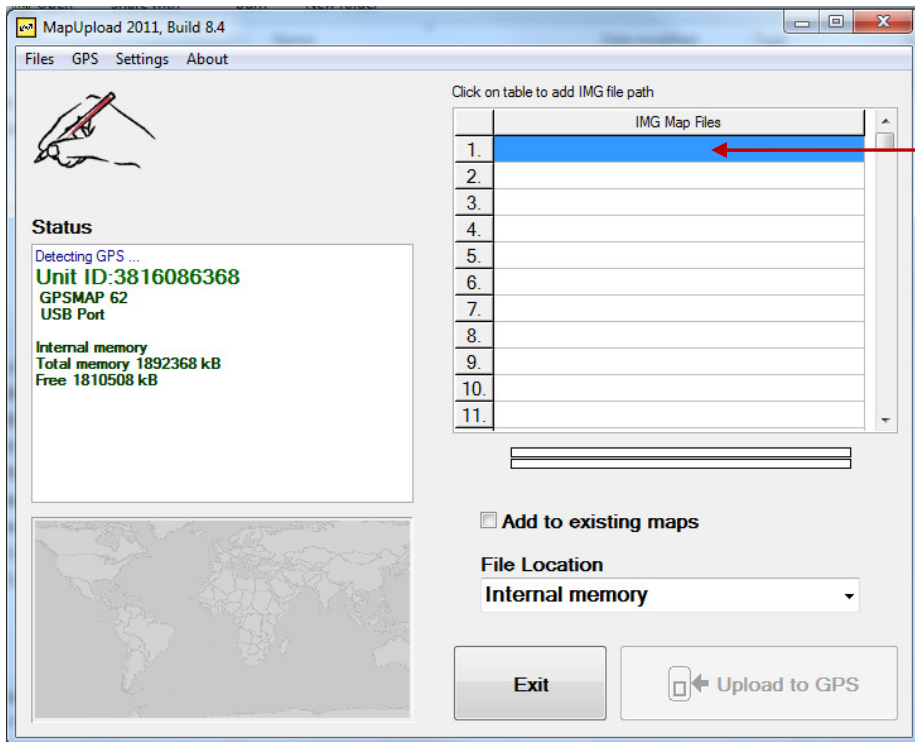


When prompted, select 'Save File' and navigate to a location to save the .exe file to.

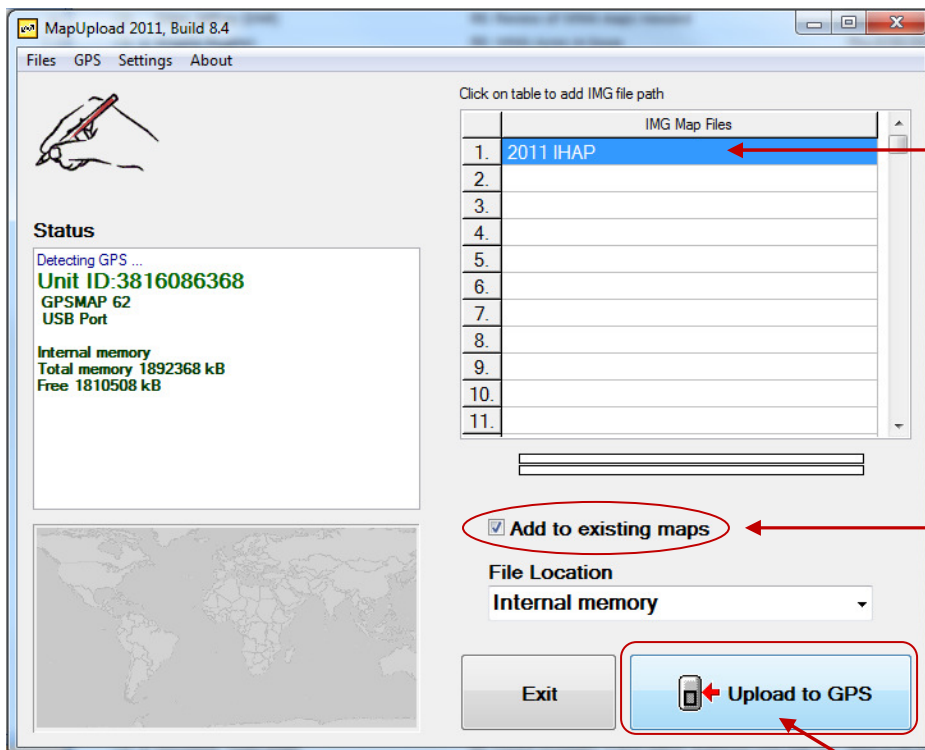
Once the file has .zip file has downloaded, navigate to where you saved the file and extract the file.

Once extracted, double-click on the .exe file to run it and install the software.

When MAPUpload opens, the left-hand side of the screen will show the model of your GPS unit, how it is connected and the amount of available memory.



Click inside the blue area in the IMG Map Files table. Navigate to where you extracted the '2011_ihap.img' file to earlier, select it click 'Open'

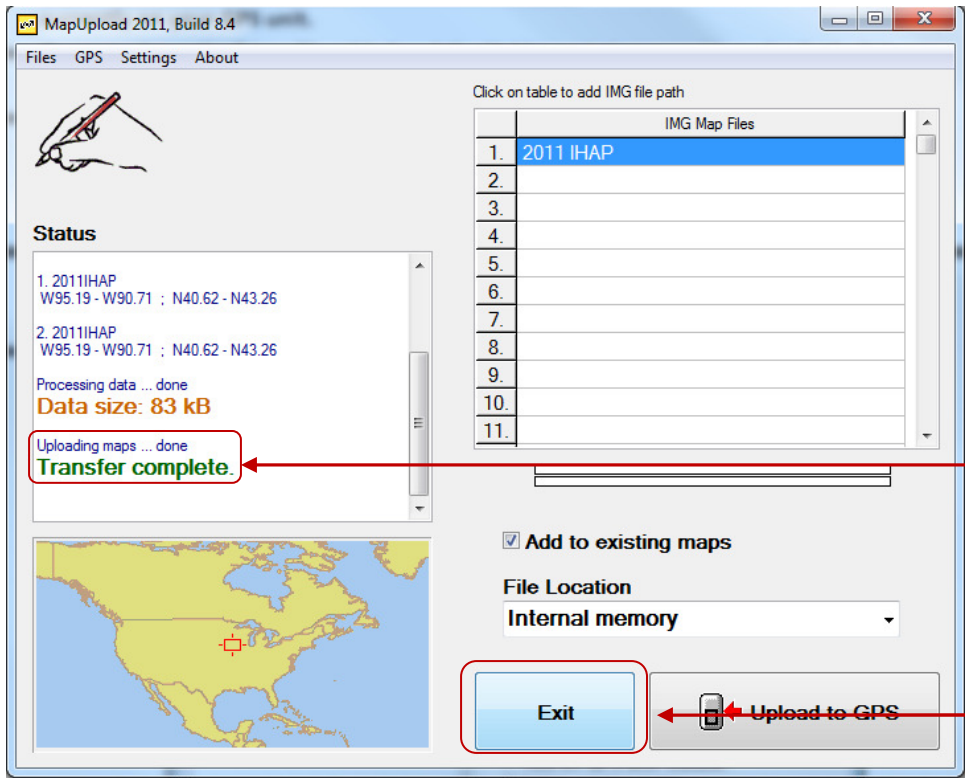


The 2011 IHAP file will be added

MAKE SURE YOU CHECK ADD TO EXISTING MAPS!!!

Failure to do so may result in a loss of data currently on your GPS unit

Click on Upload to GPS to begin the transfer



Wait for the upload to complete which may take some time depending on the file size, GPS unit and connection type.

Click on Exit.

You may now properly disconnect your GPS unit from the computer.