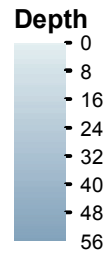
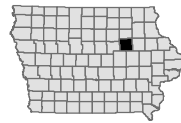


# Harold Getty Lake

## Black Hawk County

Contour interval is eight feet.



Maximum Depth - 55.8 ft

Mean Depth - 12.6 ft

Area - 47.5 acres

Volume - 601 acre-ft

Lake mapped July 2012

Depths adjusted to crest elevation

Horizontal Datum NAD 83

Coordinates are UTM Zone 15

ArcGIS 10.0 Basemap Imagery

### Legend

- Maximum Depth
- Boat Ramp
- Parking Lot

