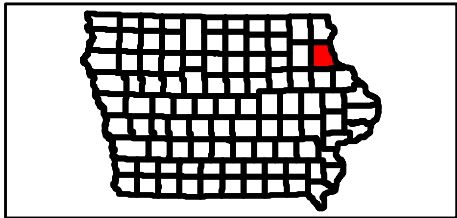
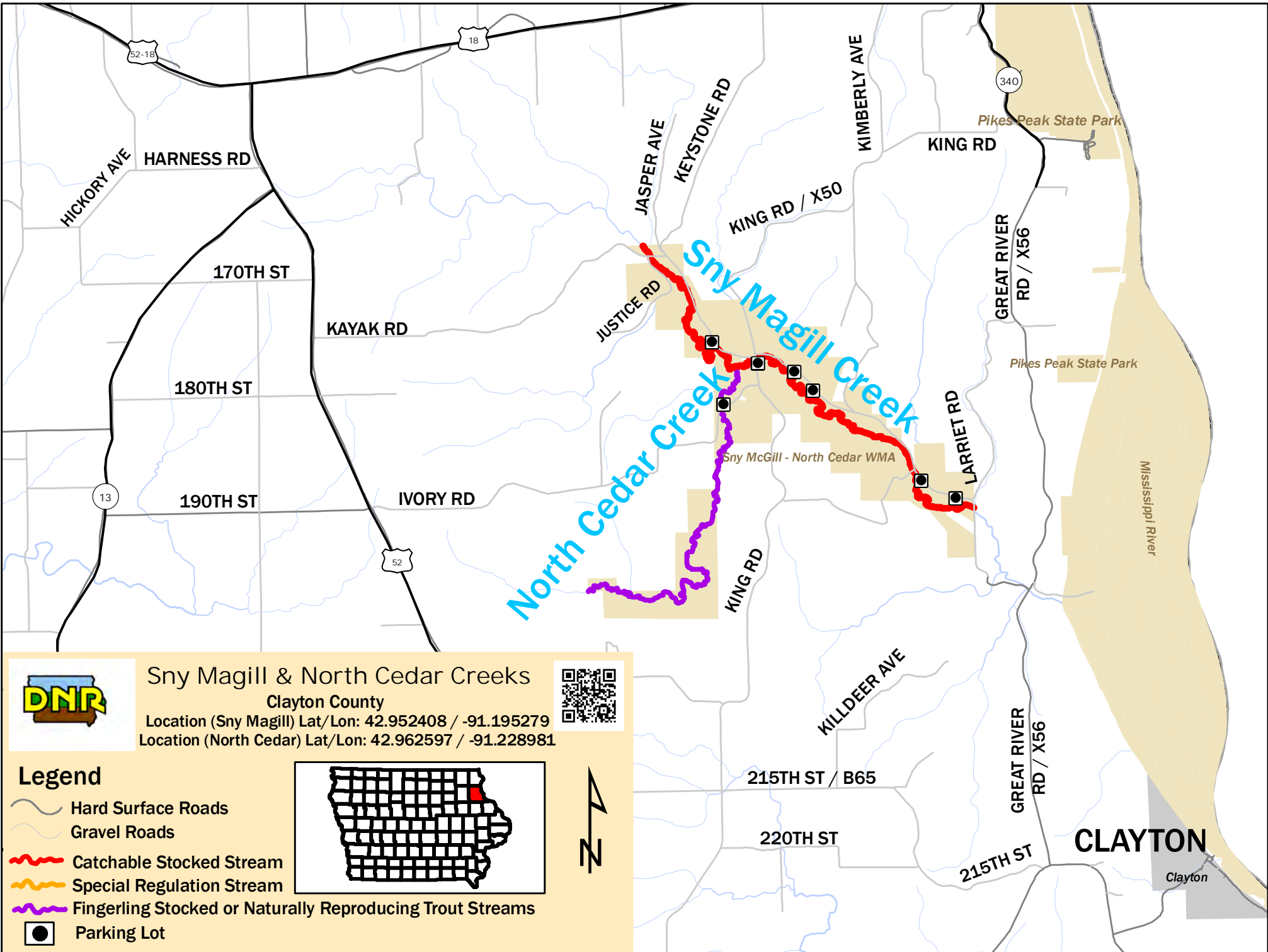


Sny Magill & North Cedar Creeks
Clayton County
Location (Sny Magill) Lat/Lon: 42.952408 / -91.195279
Location (North Cedar) Lat/Lon: 42.962597 / -91.228981









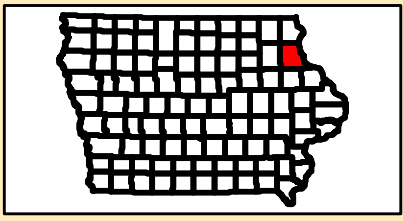


Snyder Magill & North Cedar Creeks
 Clayton County
 Location (Snyder Magill) Lat/Lon: 42.952408 / -91.195279
 Location (North Cedar) Lat/Lon: 42.962597 / -91.228981



Legend

-  Hard Surface Roads
-  Gravel Roads
-  Catchable Stocked Stream
-  Special Regulation Stream
-  Fingerling Stocked or Naturally Reproducing Trout Streams
-  Parking Lot



CLAYTON

Clayton