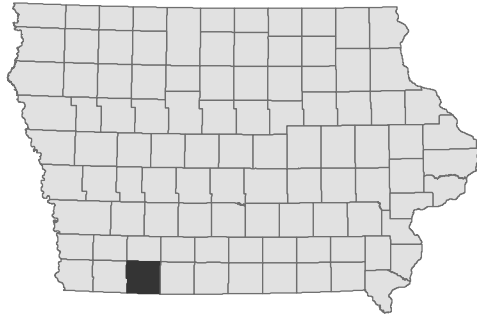


Windmill Lake

Taylor County


Contour Interval is two feet




Maximum Depth - 16 ft
Mean Depth - 9 ft
Area - 24 acres


Depth adjusted to crest elevation
Horizontal Datum NAD 83
Coordinates are UTM Zone 15
Map Produced ; February 2017

Fishing Structure

 Trees Cedar

 Maximum Depth

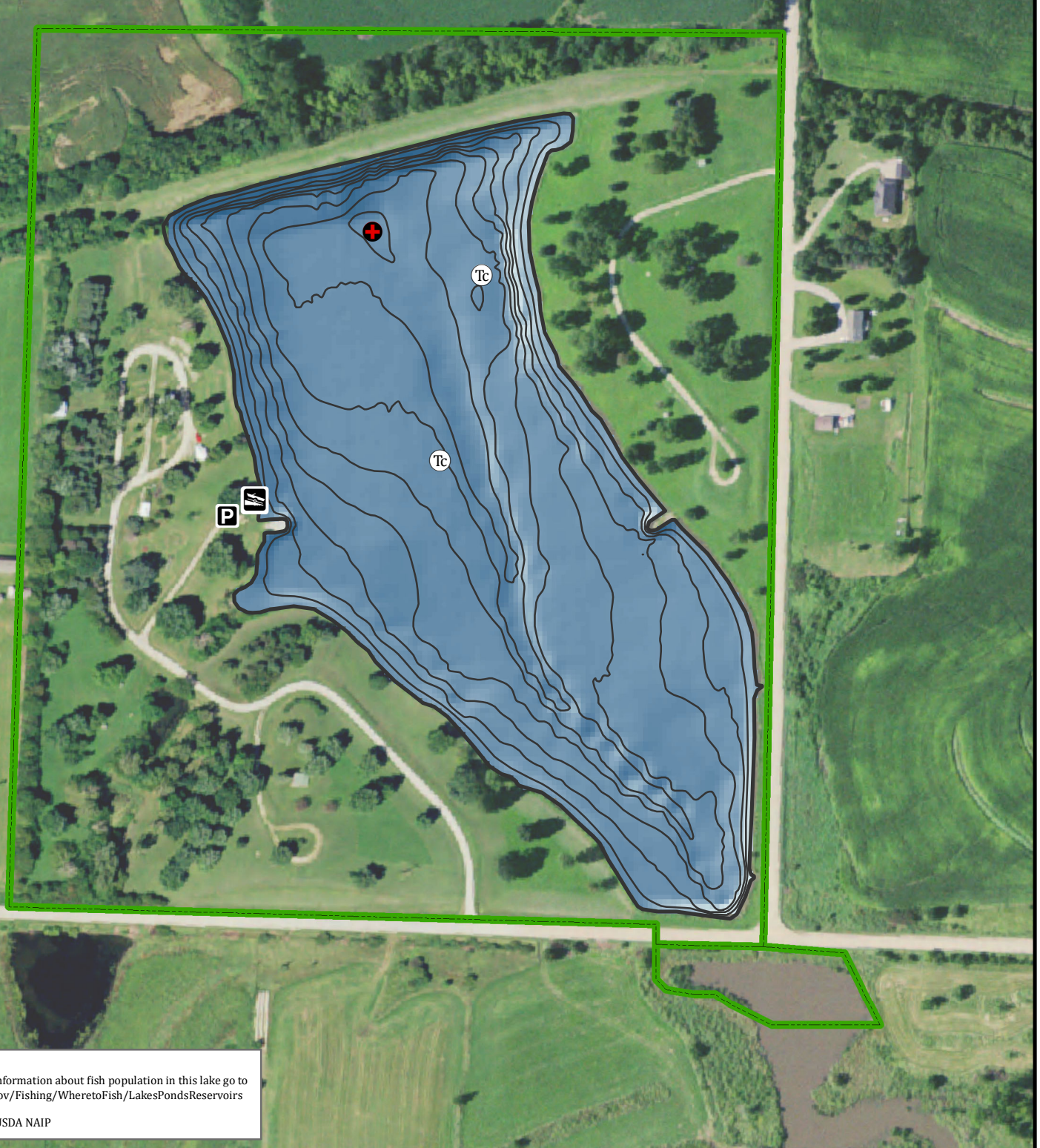
 Parking

 Boat Ramp

 Public Area

GPS Coordinates for the fishing structures below can be downloaded from a GPX file located at www.iowadnr.gov/Fishing/Fishing-Maps

0 90 180 360 540 720 Feet



Note
For additional information about fish population in this lake go to www.iowadnr.gov/Fishing/Wheretofish/LakesPondsReservoirs

Imagery Credit: USDA NAIP