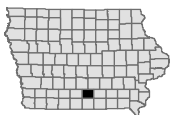


Red Haw State Park

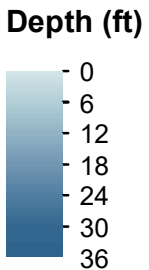
Red Haw Lake Lucas County

Contour interval is four feet.

Maximum Depth - 35.6 ft
 Mean Depth - 12.5 ft
 Area - 75.9 acres
 Volume - 941 acre-ft
 Lake mapped October 2018
 Depths adjusted to crest elevation
 Horizontal Datum NAD 83
 Coordinates are UTM Zone 15
 NAIP 2017 Aerial Photography



DNR
 Fisheries
 Bureau



Legend

- Max Depth
- Boat Ramp
- Parking
- DNR - Parks

