

Grovers and Otter Creeks






Fayette County

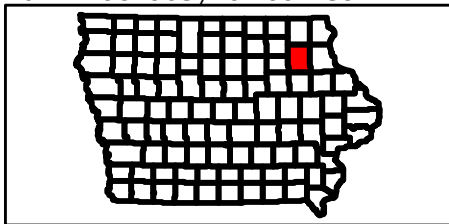
Location (Grovers) Lat/Lon: 42.949344 / -91.774831

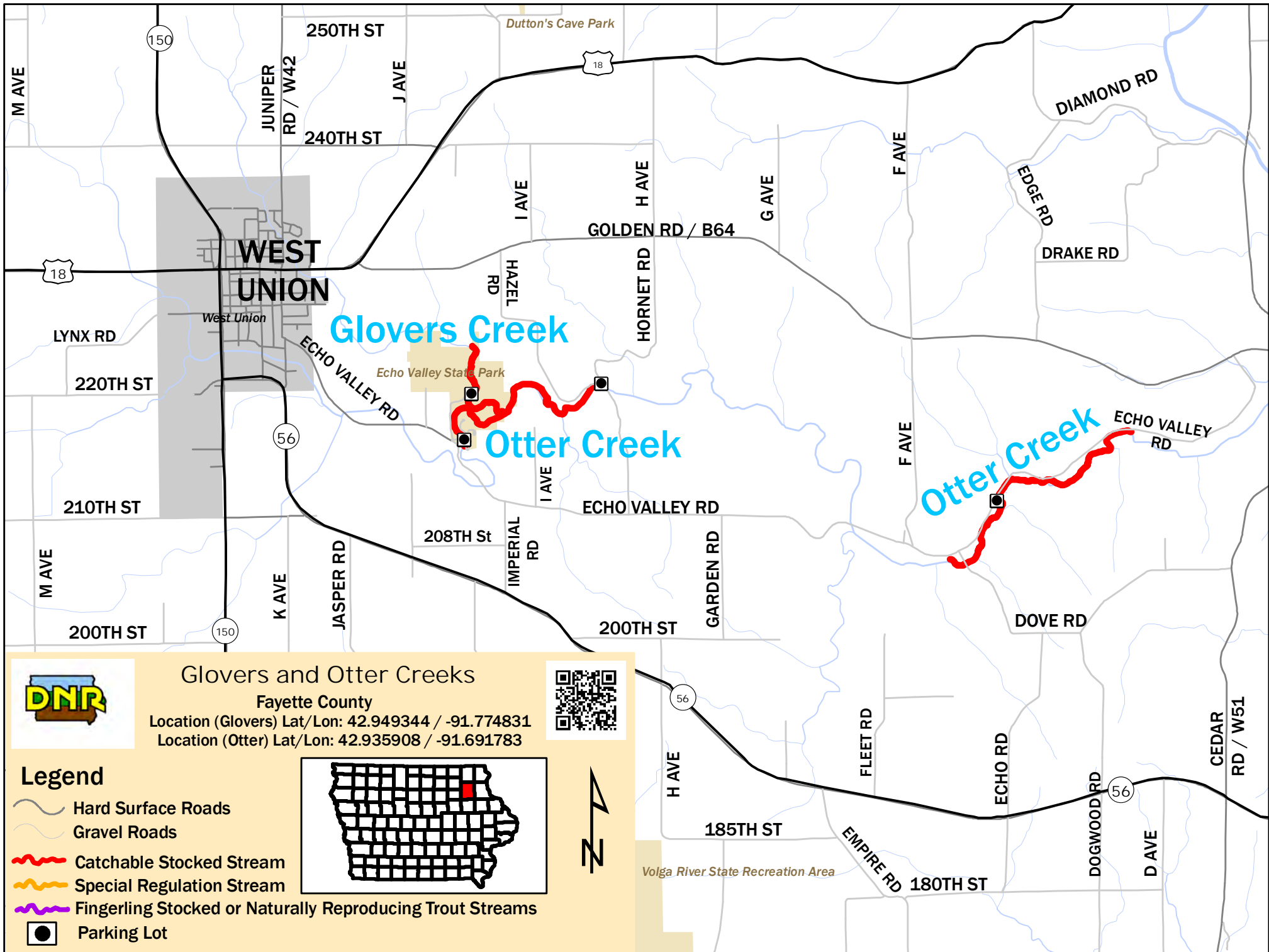
Location (Otter) Lat/Lon: 42.935908 / -91.691783



Legend

-  Public Land
-  Catchable Stocked Stream
-  Special Regulation Stream
-  Fingerling Stocked or Naturally Reproducing Trout Streams
-  Parking Lot





Grovers and Otter Creeks

Fayette County

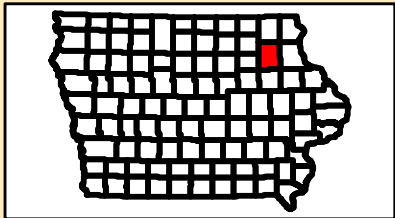
Location (Grovers) Lat/Lon: 42.949344 / -91.774831

Location (Otter) Lat/Lon: 42.935908 / -91.691783



Legend

- Hard Surface Roads
- Gravel Roads
- Catchable Stocked Stream
- Special Regulation Stream
- Fingerling Stocked or Naturally Reproducing Trout Streams
- Parking Lot



Volga River State Recreation Area