

Lake Hendricks

Howard County



Fisheries Bureau

Contour Interval is three feet

Maximum Depth - 18.5 ft
Mean Depth - 7.4 ft
Area - 40 acres

GPS Coordinates for the fishing structures below can be downloaded from a GPX file located at www.iowadnr.gov/Fishing/Fishing-Maps

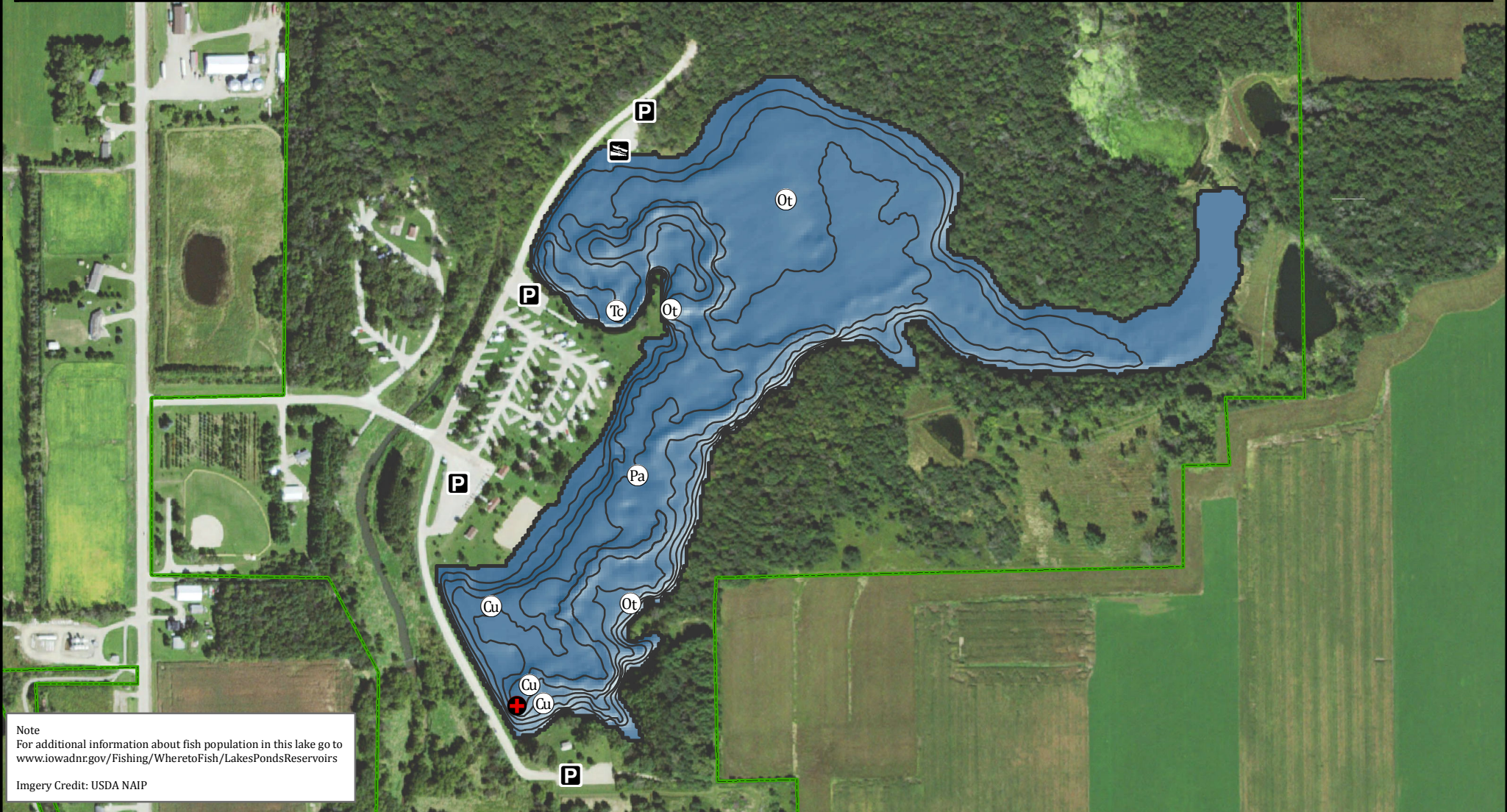
0 160 320 640 960 1,280 Feet

Fishing Structure

- Cu Culverts
- Pa Pallets
- Ot Other
- Tc Trees Cedar

- + Maximum Depth
- P Parking
- B Boat Ramp
- Public Area

Depth adjusted to crest elevation
Horizontal Datum NAD 83
Coordinates are UTM Zone 15
Map Produced ; February 2017



Note
For additional information about fish population in this lake go to www.iowadnr.gov/Fishing/Wheretofish/LakesPondsReservoirs

Imgerly Credit: USDA NAIP